



**6<sup>RD</sup>3 YALGOO BULL SALE**

*In conjunction with Ivy Bank*

**Monday 12th August 2024**

*Your Carcase Choice*



## **CONTACTS FOR INSPECTIONS**

*(or from 11am on Sale day)*

Grant Nivison: 02 6777 2525

Jock Nivison: 0497 762 977

Paul Jamieson: 0428 667 998

Brian Kennedy: 0427 844 047

Elders Walcha: 02 6774 2600

Paul Dooley: 0458 662 646

James Sharpe: 0409 272 490

Nick Hall (Hall Ag): 0436 449 033

Free delivery to  
NSW, QLD, VIC and TAS.

*Elders*





# 6<sup>RD</sup>3 YALGOO BULL SALE

*In conjunction with Ivy Bank*

**45 Profit Driving Bulls**  
ALL SALE BULLS SEMEN TESTED

Videos of all lots available 2 weeks prior to sale date  
[yalgoogenetics.com.au](http://yalgoogenetics.com.au)

**Monday 12th August 2024**  
Commencing 1:30pm  
*Lunch and smoko available at the sale*

JBAS Status - Yalgoo has level 7 JBAS accreditation

Sale Details: A rebate of 2% will be paid to outside agent introducing approved buyers in writing, 24 hours prior to commencement of the sale, accompanying them and settling within seven days of the sale.



This sale is interfaced with AuctionsPlus and will be conducted live online in real time. Bidding is available only to registered AuctionsPlus users. To bid you must register, preferable 24hrs before the sale. Contact AuctionsPlus on 02 9262 4222 for more information







# WELCOME

## to YALGOO 63rd Performance Recorded Sale

# Your Carcase Choice!

**THANKYOU** for taking time to consider the Yalgoo program. After 75 years of breeding and 62 sales; today more than ever we take our responsibility of adding genetics to your herd seriously. We strive to offer a total program; from strict herd management to superior genetics and a market demanding phenotype. All boxes are ticked, no short cuts are taken – we call this process Best Practise Genetic Improvement.

We provide:

- ✓ Sound, functional bulls carrying superior genes
- ✓ Industry best quality assurance including:
  1. Independent structure and fertility testing on sale bulls
  2. Serving ability tested bulls
  3. Genotyped and parent verified bulls
  4. Bluestar pre-sale vaccination program
  5. Semen tested bulls
  6. High data integrity (5 star Breedplan rating)
  7. Yalgoo is a Bush Agribusiness - Top Stud
  8. Commercially, acceptable phenotype
  9. Unique bull depreciation model to control bull costs
  10. Industry best practise herd management – focusing on producing a low cost beef herd

This sale really is “Your Carcase Choice.” 82% of the sale are in the top 30% of the breed for both EMA and IMF. We get told these are traits that our commercial cattlemen are struggling to find simultaneously. We have been selecting sires for many years that excel in both these traits as well as displaying an expressive muscle pattern along the spine and hindquarter primals. Importantly, 40% of the sale bulls have been scored a B- or B for muscle by Roger Evans, demonstrating the design of the offering. The industry is currently working on body condition score EBV's. Body condition is the primary driver for female conception. By having a long history of selecting for visual muscle, EMA, FAT

and IMF we expect this combination of traits to be the genetic drivers of body condition score. Simply put; we are filling the petrol tank up to the limit to allow our clients to get the most from their cattle through their management.

I find it frustrating that when we experience a beef boom, we get told by pundits that we are in a new price paradigm. Australia by nature has a fluctuating beef supply continuum driven by many factors, one being our erratic climate. By nature this means prices will cycle according to our national herd inventory. As producers, our KPI's never change. We see trends come and go, but efficient beef production wins over the long term. It should be of comfort to Hereford and Hereford cross producers, that they are producing more with less. As we look to a future of market opportunities and compliance pressures; an animal that grows quickly, is highly fertile and delivers a premium product with the lowest amounts of natural resources will be paramount. Moderate, easy fleshing Hereford infused cattle carrying high gaining genetics are this article.

The bull's also average in the TOP 10% for the breed for the SSR index. This makes the Yalgoo sale one of the highest indexing sales in the country. Now what does this mean??

As always numbers in context are the key to determining what financial impact this will have on your business. The following example of a 500 cow herd, demonstrates the economic power of Yalgoo genetics vs breed average genetics:

#### Assumptions:

- BREEDER NO: 500
- WEANING: 90%
- YEARLING CATTLE: 450
- MATING RATE: 2%
- ANNUAL BULL REPLACEMENT RATE: 20%
- Genetic difference of \$24.50 is constant over 10 year period



BULL SOURCE	INDUSTRY AVERAGE	YALGOO 23 SALE TEAM
Index value	\$131	\$180
Difference in genetic gain per generation	+\$5	+\$24.50
Extra Calf Crop Income From Genetic Gain Over 10 Year Period	\$9000	\$216 000

It's imperative when you are considering bulls that you put economic impact at the top of your bull selection criteria. Our job is to balance this with the type you like to look at and the cost of these genetics to your business.

Regarding costs; Bull costs can be a major contributor to cost of production. The cost of genetics has been extreme in the past few years. Bull cost's per calf of \$200+ per calf are becoming more common. These costs are a major handbrake on profitability and I encourage you to consider your calf costs.

The investment risk of genetics is such that-

- The payback period is long and generally covers high and low beef cycles.

The only way to control this risk is for the bulls to last longer. This amortises your financial investment by producing more calves per bull and lowering the cost per calf born. Our Bull Breeding Soundness Evaluation (BBSE) data suggests our bulls are lasting close to 5 matings. Our BBSE is designed to give you the confidence to mate at 2%. Allowing you to spread your bull investment across more cows.

Our investment in Genomics continues to increase. In 2022 across our cattle and sheep enterprises we collected over 2000 samples of DNA. Experience gained from our sheep enterprise has re-enforced the benefits of improved accuracy and distribution of animals for our clients.

Improved accuracy of EBV's allows our clients to purchase bull's with the confidence that high performance genetics will deliver real world profitability.

In the bull notes, we have included recommendations on which market/ system that individual lots would be best suited to. The heifer (H) and multi-purpose (MP) bulls, we believe are safe to use over heifers.

This year's bulls are a culmination of piecing together balanced performance and putting the cattle under significant paddock pressure for over 7 decades. A 'no passengers policy' ensures herd productivity is consistently high. This group of bulls are certainly our best effort at combining high carcase merit and good design. I really encourage you to inspect them in the flesh.

You will notice a distribution of new and proven sires represented, with the commonality of carcase enhancement shared by all these sires. Also take note this will be the only opportunity to purchase semen in Churchill Smokey. A multi trait sire with a terrific phenotype that recently sold for \$145 000 AUD for a half share in the US. I believe Smokey will be an important part of the whiteface gene pool over the next few years. Our bull sale will be the only opportunity to purchase semen in Churchill Smokey in 2024. The semen is expected to arrive early August.

We would like to thank everyone who has supported our program. We look forward to seeing you at our 63rd sale. If you require more information please get in contact with me.

Cheers, Jock

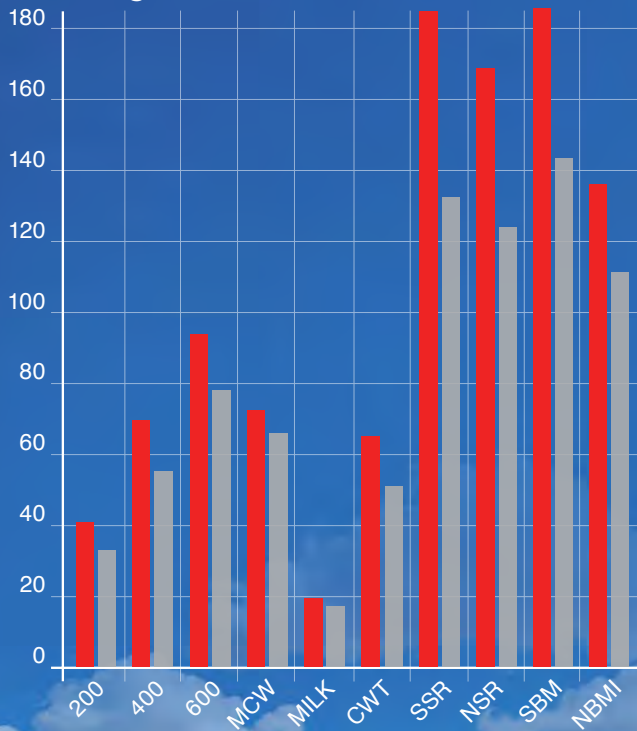
*All lot's will be videoed and Video's will be available two weeks before the sale on the HAL, Auctionsplus and Yalgoo websites.*

**IMPORTANT NOTE: The guarantees/ information provided within this catalogue are applicable to YALGOO bulls only. Please speak to Alan Green for Ivy Bank protocol.**

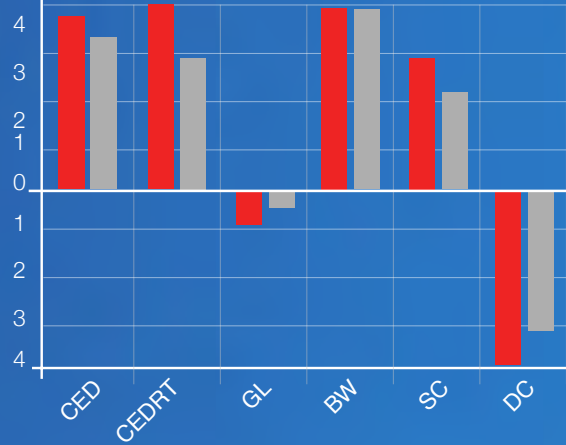


# Sale Team vs Breed Average

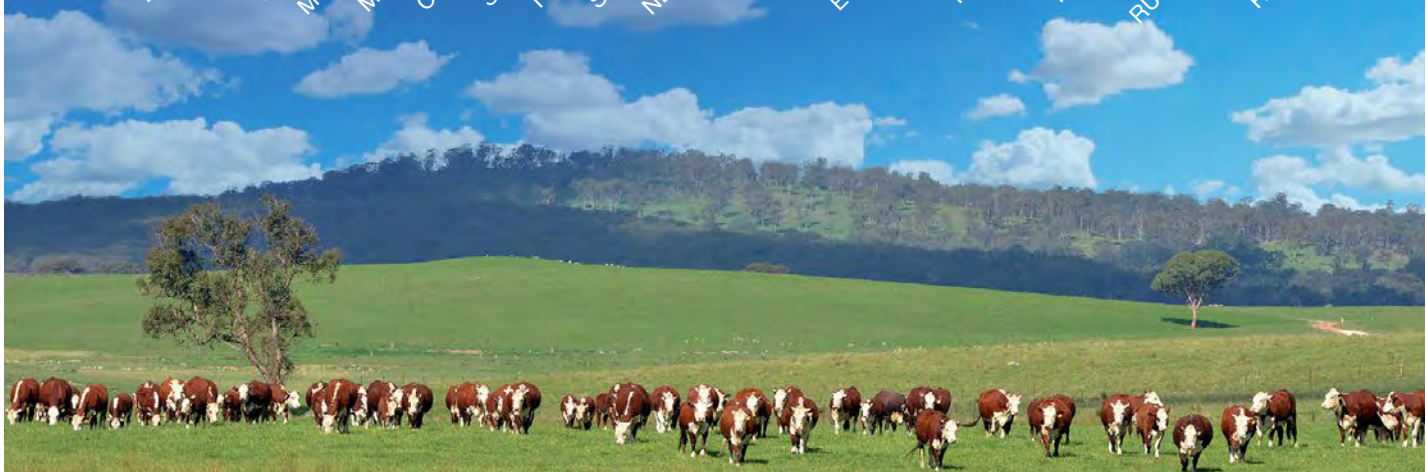
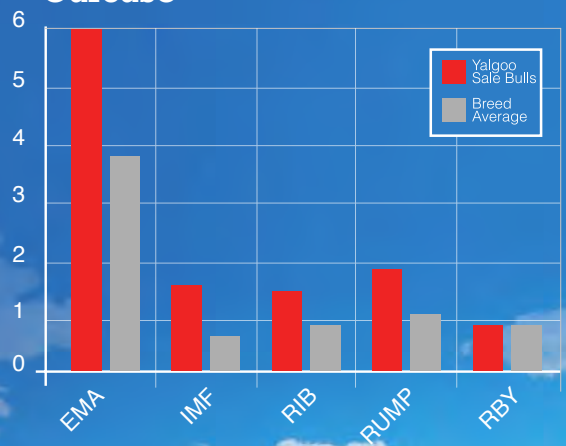
## Weight & Profit



## Fertility



## Carcase



# Recent Awards

FOR YALGOO GENETICS



2016  
Finalist for  
NSW Farmer  
of the Year



2017  
Australian  
Sheep Farmer  
of the Year



2018  
Nominee for  
Agricultural  
Innovation  
Award



2019  
Hargraves  
Institute,  
Innovation  
Award



2019  
Agricultural  
Advocacy  
Delegate to  
Canberra



2023  
Global  
Farmers  
Masterclass  
Rabobank

# Does a higher beef price equate to a proportionally higher return for all beef producers?



I ask you to consider these following simple sums:

**Assumptions:**

2013 feeder steer price: \$2.00/kg  
 Angus Premium: 10 cents  
 Heterosis: 10%

2013	Angus	Black Baldy
Steer Weight (kg)	500	550 (10% Heterosis)
Price (\$/kg)	\$2.00	\$2.00
Premium (cents)	10	0
Gross (\$)	\$1050/hd	\$1100/hd
Income/100hd	\$105 000	\$110 000
Income difference/100hd	<b>-\$5000</b>	+\$5000
Income differential (%)	<b>-2.4%</b>	+2.4%

If we consider the initial question, then the answer is no. The black baldy producer is getting rewarded more than 2% extra over the pure bred producer in a high beef cycle. When the beef price is very low, a little bit of a premium can be helpful. However, when the price is historically high then production becomes increasingly important.

This is because regardless of what the market is doing; the fundamental profit drivers of beef production don't change. Fertility and weight in conjunction with stocking rate, drive profit faster than anything else.

Depending on how many maternal benefits you include in your heterosis, you gain a minimum of 10% in a two way breed split. This is fixed.

**Assumptions:**

2016 feeder steer price: \$3.50/kg  
 Angus Premium: 10 cents  
 Heterosis: 10%

2016	Angus	Black Baldy
Steer Weight (kg)	500	550 (10% Heterosis)
Price (\$/kg)	\$3.60/kg	\$3.50/kg
Premium (cents)	10 cents	0
Gross (\$)	\$1800/hd	\$1925/hd
Income/100hd	\$180 000	\$192 500
Income difference/100hd	<b>-\$12 500</b>	+\$12 500
Income differential (%)	<b>-4.8%</b>	+4.8%

**There has never been a more important time to be cross breeding.**

Where as we can see in the example above; the price premium is not fixed and actually diminishes as the beef price goes up.

In conclusion when the feeder steer price is \$2.00/kg live weight, the pure bred producer needs a price premium of 20 cents/kg to break even with the black baldy producer.

When the feeder steer price is \$3.50 /kg live weight, the pure bred producer needs a price premium of 35cents/kg to break even with the black baldy producer.



# GET MORE !BANG! FOR YOUR BLACK

## Heterosis: You are getting taxed if you don't utilise it

### What is it and what does it do?

- Heterosis, hybrid vigor, or outbreeding enhancement, is the improved or increased function of any biological quality in a hybrid offspring. Achieved through the mixed genetic composition of parental genetic makeup
- Heterosis accelerates lowly heritable traits, that are not easily/quickly achieved in purebreds
- The following results are based on US research studies using genetically breed average Hereford bulls over Angus cows Vs genetically breed average Angus bulls over Angus cows

### Why we need it?

1. F1 cow is 8% more efficient than pure bred cow (transforming grass milk) (USMARC)
2. F1 cow lives 38% longer than pure bred (USMARC)
3. F1 cow has 25% more production in kilograms of calf weaned (USMARC)
4. F1 female reaches puberty before a pure bred (MSU study)

### Cost and Income Benefits

- Result: F1 female lives longer & is more fertile therefore there is a decrease in replacement costs
- Result: F1 female has an advantage in pregnancy rates of 7% (H R Heterosis Project)
- Result: F1 female more likely to get in calf as a two year & will produce more calves in her lifespan than a pure bred
- These attributes result in a 10% cost saving on cow production costs over a pure bred herd (US MARC)

### Health Benefits of Heterosis

- Genetics control immune response and immunity
- Pure bred doubles up more of the undesirable immune-response genes (in breeding)
- Crossbreeding ensures more genetic diversity and optimal immune response
- Thus, a crossbred cow tends to have more optimum immune system function than a straight bred cow
- Results in a healthier mum producing better colostrums which results in a healthier and heavier calf (decrease in infant immune diseases and subclinical losses)

### Real World Proof: Recent Studies

- Profitability studies undertaken on the merits of cross breeding in the leading purebred black herds of Simplot Livestock Co., Lacey Land and Livestock, Harris Ranch and Circle A Angus in the US
- All studies showed a marked increase in income of the Hereford sired progeny over the pure black progeny
- Harris Ranch findings: Through the first year of the multiyear study, the crossbred calves had a \$78/head advantage, compared to their straight bred peers (Table 1). There was a slight advantage to the crossbred (\$10.80/head) for increased weaning weight, but most of it came through feedlot and carcass performance.
- The Hereford-sired group had a definite advantage in average daily gain, dry-matter feed conversion and, ultimately, cost of gain compared to the Angus-sired group.

Traits	Angus Sired	Hereford Sired
Ranch		\$10.80
Back ground		\$14.10
Pre Feedlot		\$24.90
Feedlot		\$86.10
Carcase	\$33.27	
FeedlotandCarcase		\$52.83
NetValueDifference		\$77.73

Study conducted by Dave Daley and Sean Earley, California State University-Chico; cooperators are Lacey Livestock, CA; American Hereford Association; Harris Feeding Co.; Harris Ranch Beef Co.

If you need assistance in implementing a black baldy cross breeding program please contact Yalgoo or Herefords Australia.

**If you are not crossbreeding, you are leaving 20-25% of production on the table. Does your pure bred premium cover this?**







**AIM**

To assist you in selecting bulls; for your specific production system or target market.

**RATIONALE**

Although indexes are an important indication to the suitability for a specific market there are other factors that will determine whether that bull's progeny will be best fit for a specific market.

We have combined the genotype and phenotype to form our recommendation.

**METHODOLOGY**

Recommendations are our subjective opinion of the suitability of a certain bull for a specific market/production system.

We have used a combination of maturity type, Indexes, EBV's, visual muscle content, feedback from clientele/processors and raw data to form our recommendations.

**DESCRIPTIONS**

**SM = Supermarket Trade**

To form our SM recommendations we have primarily used processor feedback.

For a bull deemed to be suitable for the SM trade he has to have a favourable combination of visual muscle, maturity type and SM index.

**MSA = MSA Compliance driven markets**

To form our MSA recommendations we have primarily used the June SBTS Tech talk document: "Meat Standards Australia Breeding: for Improved MSA Compliance & Increased MSA Index Values"

A bull recommended for MSA compliance markets must have a favorable combination of the following traits:

- temperament
- fat EBV's
- 200 400 600
- IMF
- carcase weight
- visual muscle

**F = Feeder Animal**

To form our recommendations we have primarily used feedlot feedback/acceptability of Yalgoo and Yalgoo client's cattle. As well as conducting our own market research.

A bull recommended for use in a system producing feeder steers will have a favorable combination of maturity pattern and the GN index.

**EU = EU Market**

To form our recommendations we have primarily used feedlot/processor feedback/acceptability of Yalgoo and Yalgoo client's cattle. As well as conducting our own market research.

A bull recommended for use in a system producing animals for the EU market will have a favorable combination of maturity pattern and the EU index.

**HGS = Heavy Grass Finished Market**

To form our recommendations we have primarily used processor feedback/acceptability of Yalgoo and Yalgoo client's cattle. As well as conducting our own market research.

A bull recommended for use in a system producing animals for the HGS market will have a favorable combination of visual muscle, maturity pattern and the GS index.

**BB = Black baldy**

To form our BB recommendations we have primarily used client/consultant feedback.

Use the Grain Fed Index to select for bulls suitable for a BB herd.

AS well as the GN index; for a bull deemed to be suitable for a BB production system he must a specific balance of traits. This is not to suggest that other bulls won't fit into a BB herd. However, following consultation with existing BB producers it was determined that this balance will be the most profitable in a system using stocking rate as its primary profit driver and producing a 480-520kg black baldy feeder steer in temperate Australia.

**W = Weaner Producer**

To form our recommendations we have primarily used market research. A bull recommended for use in a system producing animals for the W market will have a favorable combination of maturity pattern and 200 day growth.

**HB = Heifer Bull**

To form our heifer bull recommendations we have primarily used the genotypic calving ease traits of CEDIR, BW, GL as well as the phenotype and pedigree of the bull

**MP = Multi Purpose Bull**

These bulls are suitable for cows and heifers. To form our recommendations the bulls need to have a favourable combination of genotypic calving ease and growth traits

For more information regarding recommendations, ring Jock on 0497 762 977

# YALGOO BULL QUALITY ASSURANCE

## Bull costs and their impact on profit.

The primary role of a bull is to get live calves at a reasonable cost. The cost of a calf sired is a direct result of the longevity of the bull and the price paid for the bull.

1. **Structural integrity**
2. **Libido**
3. **Pre sale and post sale management**  
(incl nutrition & disease management)
4. **Genetic merit of a bull**
5. **Temperament**
6. **Resilience**

## BACKGROUND INFORMATION

Bull failure through breakdown or infertility is a major industry issue. Independent studies have suggested it could be around the 30% - 40% per annum across the industry. Problems often arise between the bull supplier and client as to compensation for a bull failure which is quickly compounded by empty cows. At Yalgoo we are determined to offer industry best practise regarding BULL QA.

Even more of a financial threat is purchasing a bull that is never going to get cows pregnant. Bull Quality assurance was revolutionised in the late 1970's and 80's through work done by Dr. Mike Blockey. After testing thousands of commercial bull's of all ages he showed that 25% of bull's tested were unfit for service. He then developed a protocol to ensure these bull's would be identified before they were sold. This was known as the Serving Ability Test (SAT). Industry uptake was good through the 90's, however it seems there is an industry trend away from bull testing again. Disturbingly this means that around 1 in 4 bulls will again be entering the Australian beef herd unfit for service.

New Zealand research by Greg Tattersfield suggested 28% of commercial working bull's are unfit for service. And the Holmes and Sackett research suggested 18% of young bull's are unfit for service. If you are purchasing un tested bulls, how would you know? Serving Ability Testing, although laborious is the definitive test we have to ensure bull's are going to be able to fulfil their primary role.

The other advantage of Serving Ability Testing is to give the bull sexual experience. With sexual experience under his belt, he is more likely to get more cows pregnant in the first cycle. This increases the pressure put on herd fertility as well as having management benefits. Most importantly it means more weight in progeny at sale time which means more income.

**At Yalgoo we offer a pre-sale protocol that is industry best standard.**

Our program is as follows:

- **ALL YALGOO SALE BULL'S HAVE BEEN SEMEN TESTED**
- **INDEPENDENT STRUCTURAL ASSESSMENT.**  
Independent Structural Assessment. Bulls were independently assessed by Roger Evans - BSS on the 18/6/24
- **NO HOOF TRIMMING.** There has been no hoof trimming on Yalgoo for 20+years
- **VET CHECKED.** All sale bulls are vet checked by Walcha Veterinary Clinic. Yalgoo Sale criteria states that all bulls must measure 32cm or larger for testicle circumference at 400 days. Hocks, feet, penis and jaw structure are also examined.
- All sale bull semen tested by Bovine Breeders.
- **PFIZER BLUE STAR.** All sale bull's are tested to ensure no Persistently Infected animals with Pestivirus are sold. All bull's are vaccinated according to Blue Star protocol
- **FEEDBACK:** To further improve our bull QA we need your help! With the bull you have purchased you will receive an audit of performance. We encourage you to fill out this when/if a problem arises with your bull, and get it back to us. We will use this information to improve our bull QA to ensure our bulls last longer. Everyone in the bull supply chain will benefit from these records.
- **WARRANTY:** Bulls are depreciated over their working lifetime. This results in a stable calf cost for the purchaser. Please speak to Jock regarding the functionality of this warranty.
- **CLIENT GUIDANCE FOR BULL QA:** Please speak to us if you require any assistance in developing your own protocol to ensure your bull's are fit for service each year pre-joining. As your bull ages the likelihood for him being unfit for service increases. i.e. A 6 year old bull is 4 times more likely to be unsound for breeding than a three year old bull.



## AGE OF PUBERTY TRIAL/ EBV

**Yalgoo has partnered with nine other seedstock herds, Herefords Australia, Angus Australia and with scientists at AGBU, in an MLA funded research project examining the genetics of age at puberty in temperate beef breed heifers.**

Age at puberty was assessed in 3,000 Angus and 1,000 Hereford heifers by regular ultrasound scanning, from weaning to synchronisation for AI, to detect first oestrus. This method was developed and proven for tropical beef breeds as part of Beef CRC research and has become the basis for more accurate description of female reproduction in the Brahman, Santa Gertrudis and Droughtmaster BREEDPLAN evaluations.

Results for Angus and Hereford heifers showed that:

- there is significant genetic variation for age at puberty,
- that the trait is heritable, and
- Therefore could be improved by selection.

Just as importantly for temperate breeds, where reproduction rates are generally considered acceptable, it could provide a means of monitoring the genetics of female reproduction as selection pressure is applied to improve other aspects of productivity (carcass quality, growth and calving traits for example).

Trial EBVs for age at puberty have been distributed to the participating breeders. The range in those EBVs is 74 and 141 days respectively, for the sires of Hereford and Angus heifers evaluated for the project. This means that the female progeny of the lowest (most desirable) age at puberty Hereford and Angus bulls would, on average, become pubertal 37 and 70 days earlier than the heifer calves of the sires with the highest age at puberty trial EBVs.

The results of this study underpin new research (the Southern Multi-Breed Project) which will involve Angus, Hereford, Wagyu, Shorthorn, Charolais and Brahman animals. This is a large MLA funded initiative, one of the focuses of which will be to improve the BREEDPLAN genetic evaluation of female reproduction traits for temperate beef breeds. This new research will be linked to the Repronomics® project in Northern Australia, which is driving the accuracy of genetic (and genomic) evaluation of female reproduction and other economically important traits for northern beef breeders.

The Trial Age at Puberty EBVs are a valuable step in helping breeders to select cattle that balance reproduction, growth and carcass merit, and other traits which contribute to overall profitability.



**Truro Sherlock – 23 Supreme Exhibit Sydney, sold for \$130 000. Sire Yalgoo Peacemaker**

# TEMPERAMENT

In a recent survey in the US, this was ranked as the most important genetic trait by US beef producers. Yalgoo has long had a reputation for breeding quiet cattle.

Yalgoo is one of the very few whiteface studs that measure temperament. This is done by an independent assessor. The importance of this is paramount. Your cattle will generally react differently around a new face. Your bull provider's cattle are used to him/her, however they won't be there on your farm to deal with the bull on a day to day basis. By getting an independent assessor to do this we are much more likely to pick up any aggressive stock before they leave the farm.

## PHENOTYPIC TRAITS

The phenotypic traits that Yalgoo select for are:

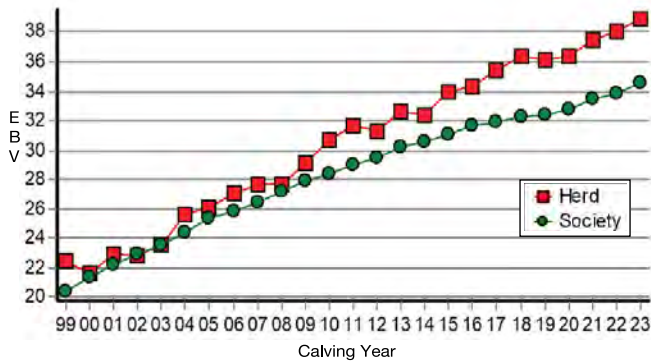
- Superior visual muscling
- Structural correctness
- Correct udder type
- Eye pigment and placement

## MATURITY TYPE

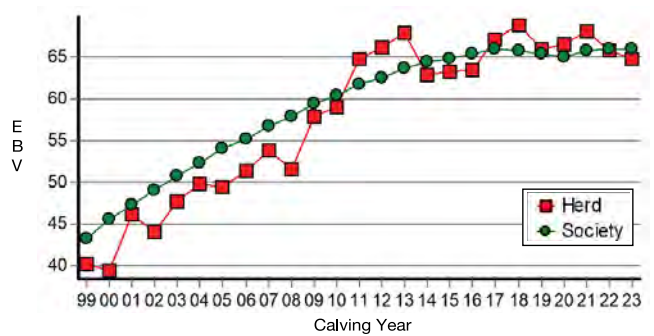
Maturity type is controlled both by genetic and environmental factors. We aim to produce frame 6 bulls with positive fat cover and a medium/early maturity pattern.

We find under high stocking rates, earlier maturing cattle are more versatile and marketable.

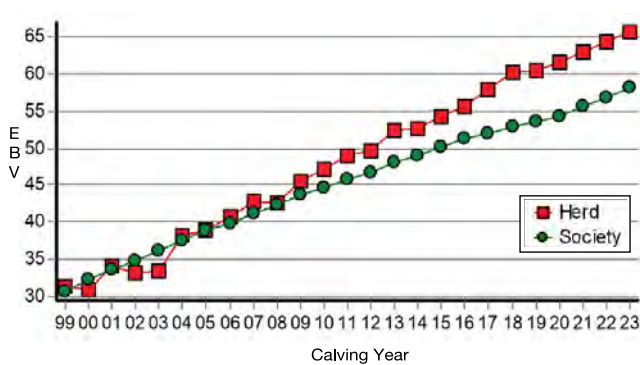
200 DAY GROWTH (kg)



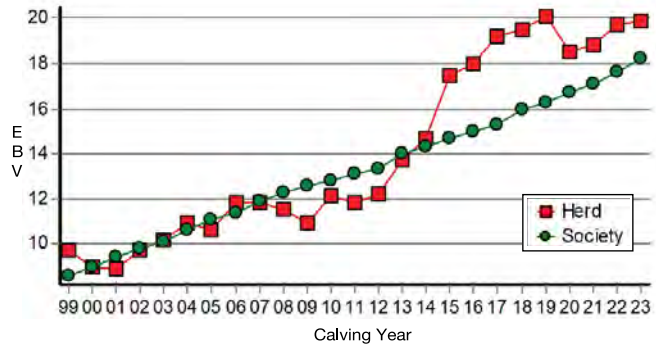
MATURE WEIGHT (kg)



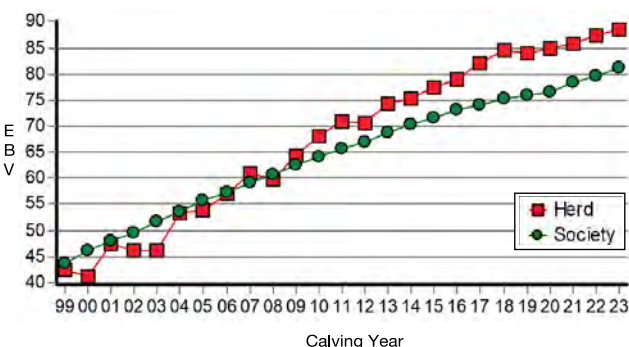
400 DAY WEIGHT (kg)



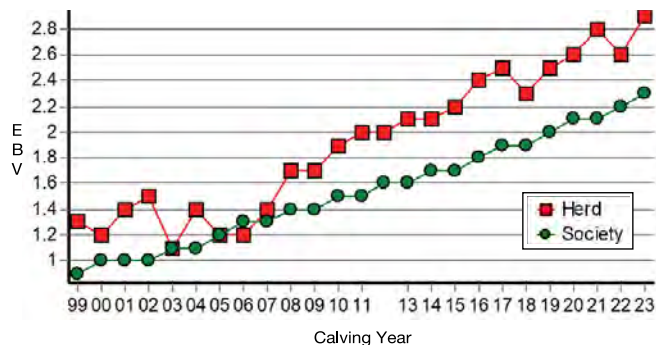
200 DAY MILK (kg)



600 DAY WEIGHT (kg)



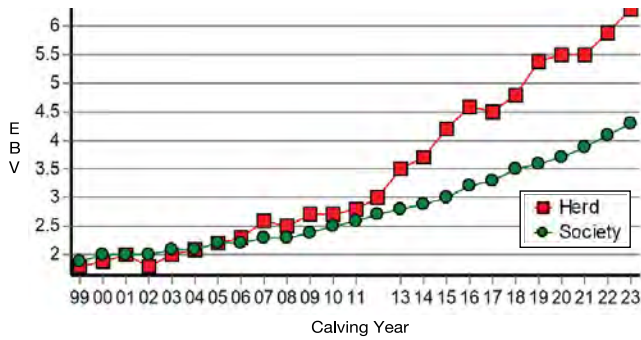
SCROTAL SIZE (cm)



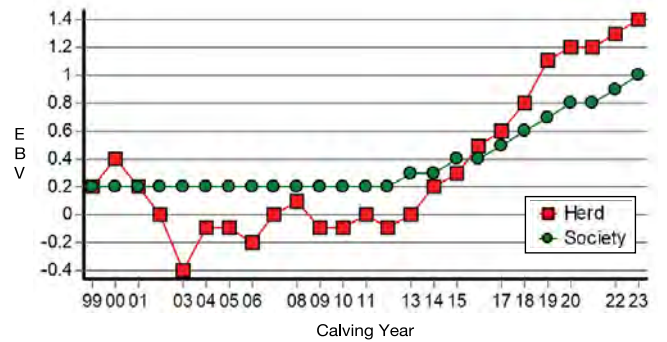




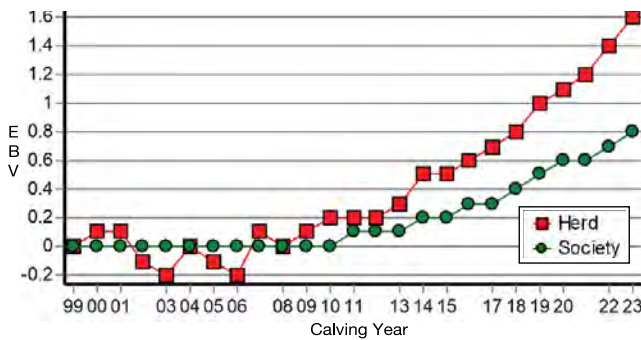
CARCASE EMA (sq.cm)



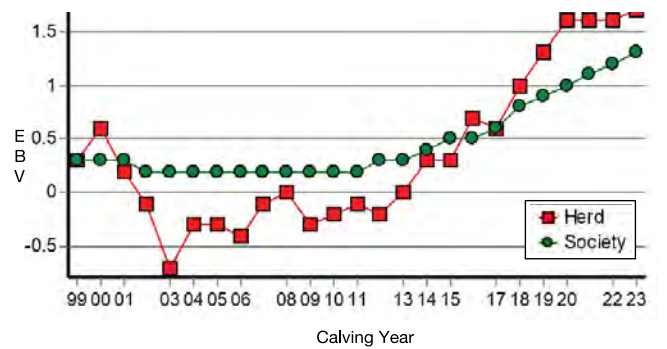
CARCASE RIB FAT (mm)



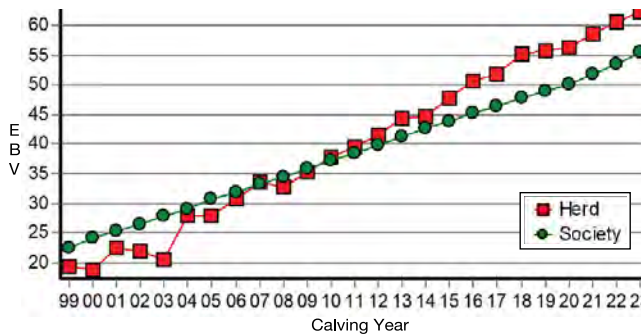
CARCASE IMF (%)



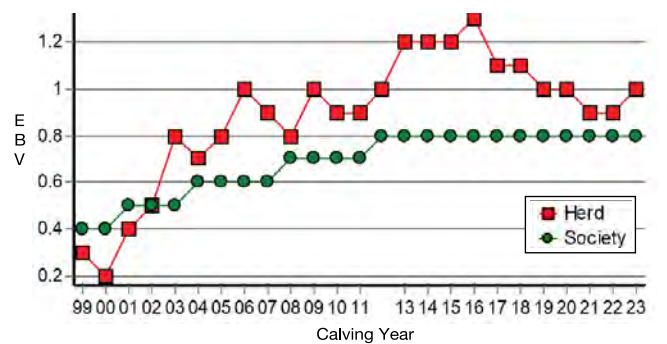
CARCASE RUMP FAT (mm)



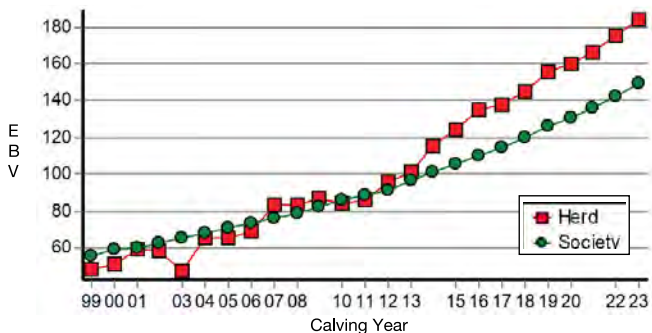
CARCASE WEIGHT (kg)



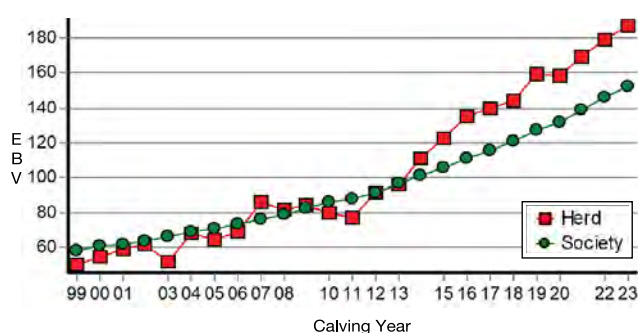
CARCASE RBY (%)



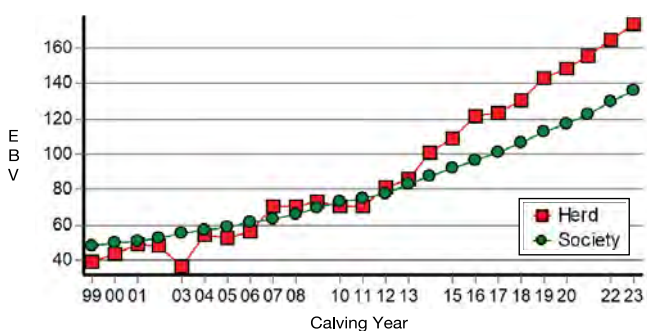
SOUTHERN SELF-REPLACING (\$)



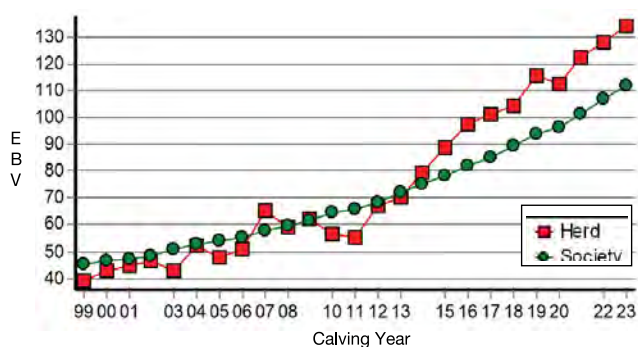
SOUTHERN BALDY MATERNAL (\$)



NORTHERN SELF-REPLACING (\$)



NORTHERN BALDY TERMINAL (\$)



**Yalgoo mixed age cows conceived at 95% in 2019 during the worst drought on record**



## YALGOO QUALITY ASSURANCE

### DATA INTEGRITY

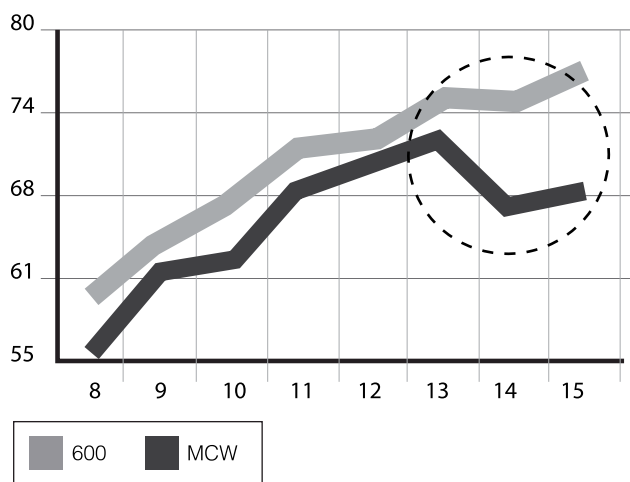
Yalgoo has a Breedplan completeness of recording rating of four and a half stars.

Our herd enjoys a high degree of performance predictability as a result of accurate BREEDPLAN EBV's. This is due to extensive testing in the following traits:

- ALL stud calves are weighed at Birth, increasing the accuracy of their birth weight EBV
- ALL stud bulls and heifers are weighed for 200, 400 and 600 day weight. Steers are weighed and recorded until they are sold. By weighing all animals we are increasing the information nucleus on each dam and creating greater herd linkage which increases BREEDPLAN accuracies
- ALL stud heifers and bulls (since 1972) have been scanned for EMA, fat depth and IMF (since 2000). Therefore our sale bulls have more accurate carcass EBV's and we are maximising the carcass information from our herd, allowing us to achieve more rapid genetic progress in carcass traits
- Mature cow weight is measured
- Independent phenotypic traits are measured including : Structure, Muscle scores & temperament
- Yalgoo was a co operator herd in the across breed NFI trial work to develop an EBV for Net Feed Intake. AGBU is currently making modifications to the NFI analysis
- By sourcing Yalgoo genetics you can be assured that any current/future economically important EBV will be measured with the greatest care and submitted correctly

### MANAGING YOUR YALGOO BULL

Appropriate nutrition and paddock size must be provided when the bull is to be used in a single sire mating situation. All bulls should be examined frequently during the joining period so that signs of injury or disease can be detected and treated immediately.



NJW Trust: Keystone Sire at Yalgoo

### MATURE COW WEIGHT

I have made special mention of this graph to highlight the importance of how mature cow weight effects stocking rate.

From 2009 to 2013 (circled area), MCW and 600 were increasing at the same rate. This is what you would expect when no selection pressure is being applied, as these traits are highly correlated.

From 2013 to 2015 we can see a distinctive gap open between these two traits. This gap reflects the selection pressure that has occurred on mature cow weight. The growth curve is being bent at 600 days and this has a pronounced affect on stocking rate. Importantly 600 day wt has not been compromised to achieve this result. This means there is no compromise in terms of income received on young sale stock as long as these stock are marketed before 600 days. However there is the ability to increase stocking rate as the MCW EBV has fallen by 8kgs.

### BEEF CLASS STRUCTURAL ASSESSMENT

Structural problems in cattle have a substantial effect on both the reproductive and growth performance of a beef herd. It is widely recognised that structural problems in sires have detrimental effects on conception rates, calving patterns and thus profitability. Similarly, females with inadequate structural characteristics are more prone to weaning lighter calves or conceiving later in the breeding season than their more functional counterparts. These structural problems are filtered through the supply chain resulting in reduced income for the producer, feedlot and thus reducing the overall productivity of the Australian Beef Industry.



Lot 22

Over the past decade, use of the Beef Class Structural Assessment System in the seedstock industry has produced a marked improvement in herds which have shown commitment to using the information appropriately. Through these dedicated breeders, there has been a flow on affect of structural improvement through out all sectors of the beef cattle industry.

**2024 YALGOO SALE BULLS**

The 2024 Yalgoo Sale Bulls have been independently structurally assessed to maximise the quality of stock on offer. Any animals deemed inadequate have been removed from the sale draft. The Yalgoo sale bulls were assessed by Roger Evans on the 18/6/24.

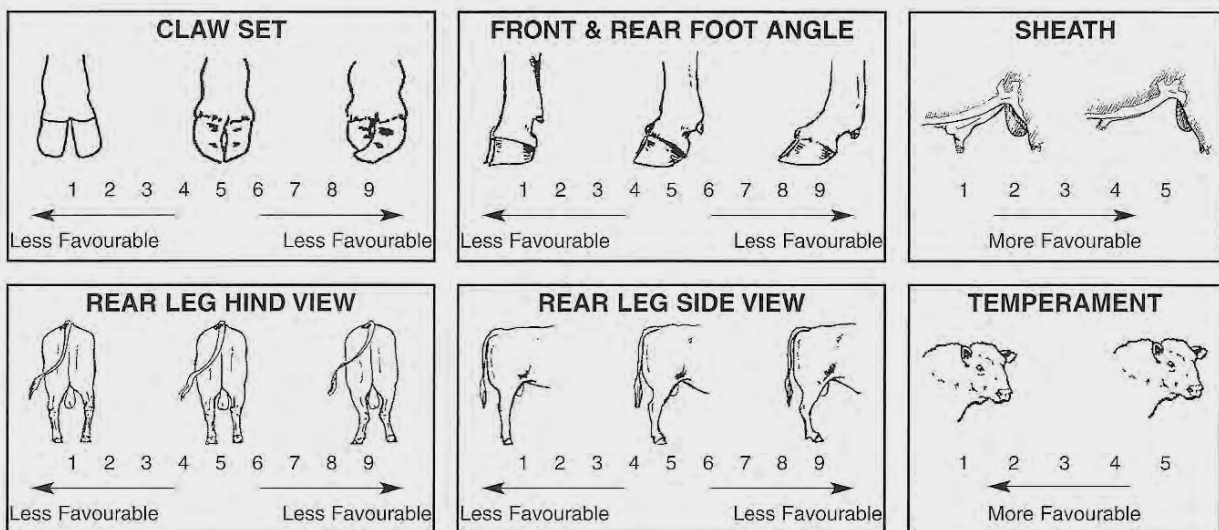
**HOW TO USE THE BEEF CLASS STRUCTURAL ASSESSMENT SYSTEM**

The Beef Class Structural Assessment System uses a 1-9 scoring system;

- A score of 5 is ideal.
- A score of 4 or 6 shows slight variation from ideal, but this includes most animals. An animal scoring 4 or 6 would be acceptable in any breeding program.
- A score of 3 or 7 shows greater variation but would be acceptable in most commercial programs. However, seedstock producers should be vigilant and understand that this score indicates greater variation from ideal.
- A score of 2 or 8 are low scoring animals and should be looked closely before purchasing.
- A score of 1 or 9 should not be catalogued and are considered culls.

**Sheath, Eye and Temperament (1 - 5)**

- A higher score indicates a tighter sheath and is more favourable
- A lower score indicates a quieter animal and is more favourable
- A higher score indicates a more favourable eye settin





# TECHNICAL

## Australian Hereford Selection Indexes

There are currently four different selection indexes calculated for Australian Hereford animals. These are:

- **Southern Self-Replacing Index**
- **Southern Baldy Maternal Index**
- **Northern Self-Replacing Index**
- **Northern Baldy Terminal Index**

Each selection index describes a different production/market scenario and relates to a typical commercial herd using Hereford bulls. Producers are advised to use the selection index that most closely aligns to their production system. All four selection indexes are focussed on maintaining and improving eating quality. Significant premiums are applied for increasing marble score up to a marble score of 3. Pressure is also applied to early life growth to maintain low ossification scores and good MSA compliance. In addition, each selection index targets the following specifications.

### Southern Self-Replacing Index

Estimates the genetic differences between animals in net profitability per cow joined in a commercial self-replacing straight bred Hereford herd targeting the domestic market. Daughters are retained for breeding and so maternal traits are of importance.

Steers are slaughtered at 20 to 22 months of age to produce 300 kg carcasses with 10 mm P8 fat depth. A moderate cost is applied for cow feed costs during the annual feed shortage period.

### Northern Self-Replacing Index

Estimates the genetic differences between animals in net profitability per cow joined in a commercial self-replacing herd targeting the domestic market. This index is suitable for use by both straight bred Hereford herds and in crossbreeding programs where Hereford bulls are being used over a Bos indicus based cow herd (e.g. flatback). Daughters are retained for breeding and so maternal traits are of importance. Steers are slaughtered at 20 to 22 months of age to produce 340 kg carcasses with 12 mm P8 fat depth. A high cost is applied for cow feed costs during the annual feed shortage period.

### Southern Baldy Maternal Index

Estimates the genetic differences between animals in net profitability per cow joined in a commercial crossbred herd using Hereford bulls over Bos taurus females (e.g. Angus). A portion of the heifers are retained for breeding and so maternal traits are of importance. The steers and surplus heifers are destined for slaughter at 20 to 22 months of age. Steers produce 300 kg carcasses with 10 mm of P8 fat depth, while heifers produce 270 kg carcasses with 12 mm of P8 fat depth. A moderate cost is applied for cow feed costs during the annual feed shortage period.

### Northern Baldy Terminal Index

Estimates the genetic differences between animals in net profitability per cow joined in a commercial crossbred herd (e.g. flatback) using Hereford bulls over Bos indicus/Tropical females (e.g. Santa Gertrudis) where all progeny (male and female) are destined for slaughter. Steers and heifers are slaughtered at 20 to 22 months of age. Steers produce 340 kg carcasses with 14 mm of P8 fat depth while heifers produce 300 kg carcasses with 17 mm of P8 fat depth.

---

All selection index values have been derived using BreedObject technology. More detailed information regarding each selection index is provided at [herefordsaustralia.com.au](http://herefordsaustralia.com.au).





# KEY CONTRIBUTORS



**The Masterplan**  
Total performance, good feet, extra dimension



**Limehill Starter 160062**  
Sire of 6 lots. Attractive cattle with performance





**Wirruna Querido**  
**Over 6 times breed average for IMF**



**NJW 73S – Probably the most influential Hereford cow of recent times.**  
**73S is in 70% of the offering's pedigrees**

# STRUCTURAL SCORES

Lot No.	FC	RC	FA	RA	RS	RH	Muscle	Temp.	Sheath	Eye	
1	SODT033	6	6	6	6	6	6	C+	1	4	5
2	SODT149	6	6	6	7	6	6	C+	2	5	3
3	SODT110	7	6	5	6	5	6	C+	1	4	4
4	SODT154	6	6	6	6	6	6	C+	1	4	5
5	SODT130	7	6	5	6	5	6	C+	1	5	3
6	SODT201	7	6	5	6	5	6	C+	1	4	4
7	SODT245	7	6	6	6	6	6	B-	1	5	5
8	SODT133	6	6	6	6	5	6	B-	1	5	3
9	SODT185	7	6	5	6	6	6	B-	1	5	5
10	SODT208	6	6	6	6	5	6	B-	1	5	5
11	SODT054	7	6	6	6	6	6	C+	1	4	4
12	SODT062	7	6	6	6	6	6	B-	1	5	4
13	SODT183	7	6	6	6	6	6	B-	1	5	3
14	SODT064	6	6	5	6	6	6	B-	1	5	5
15	SODT275	6	5	6	6	6	6	B-	1	5	4
16	SODT118	6	6	6	6	6	4	B-	1	5	4
17	SODT239	6	5	6	7	6	6	C+	1	5	4
18	SODT233	6	6	6	6	7	6	C+	1	5	4
19	SODT085	6	6	6	6	6	6	B	1	4	4
20	SODT159	7	6	6	6	6	6	C+	1	5	3
21	SODT200	6	6	6	6	6	6	C+	1	5	4
22	SODT326	6	6	6	6	6	4	C+	1	4	5
23	SODT207	6	6	6	6	5	6	C+	1	5	4
24	SODT328	6	5	6	6	5	6	C+	1	5	5
25	SODT304	6	6	6	6	7	6	C+	1	4	5
26	SODT212	6	6	6	6	6	7	C+	1	4	5
27	SODT242	6	6	5	6	6	6	C+	1	4	5
28	SODT204	7	6	6	6	6	6	C+	1	4	4
29	SODU459	6	6	6	6	6	6	C+	1	4	5
30	SODU460	6	6	6	6	6	6	C+	1	5	5
31	SODT156	6	6	6	6	6	6	C+	1	5	5
32	SODT206	6	5	6	6	6	6	C+	1	5	4
33	SODT314	7	6	6	6	5	6	C+	1	5	5
34	SODT073	WITHDRAWN									
35	SODT055	6	6	6	7	5	6	B-	1	5	3
36	SODT164	6	6	6	7	6	6	B-	1	4	5
37	SODT234	7	6	6	6	5	6	C+	1	5	5
38	SODT227	6	4	5	6	7	6	B	1	5	5
39	SODT048	6	6	6	6	6	6	B-	2	5	4
40	SODT292	6	6	6	6	6	6	B	1	5	5
41	SODT330	7	6	6	6	6	7	B-	1	5	4
42	SODT324	6	6	5	6	6	6	C+	1	4	5
43	SODT262	6	6	6	6	6	6	B-	2	4	5
44	Churchill Smokey										
45	Churchill Smokey										







# Yalgoo/Ivy Bank Sale Bulls 2024

## Yalgoo - EBV Summary June Run 2024

LOT	INDENT	SIRE	H/P GENO	DOB	CEDIR	CE DRT	GL	BW	200	400	600	MCW
1	SODT033	TRUST	PP	22/08/2022	7.3	7.9	-2.5	2.5	36	61	79	63
2	SODT149	FORWARD	PP	14/09/2022	9.3	7.6	-1.8	2.9	44	77	102	77
3	SODT110	QUERIDO	HP	5/09/2022	8.7	5.1	-6	2.3	42	71	97	53
4	SODT154	QUERIDO	PP	14/09/2022	3.4	3.4	-1.1	4.8	47	76	106	75
5	SODT130	CUDA	HP	11/09/2022	7.4	7	-4.1	2.8	42	63	82	46
6	SODT201	ENDURE	PP	18/09/2022	10.3	8.8	1.1	1.6	42	76	94	52
7	SODT245	ENDURE	PP	23/09/2022	4	8.2	4	4.6	43	77	107	88
8	SODT133	NIXON	PENDING	12/09/2022								
9	SODT185	STARTER	PP	16/09/2022	4.2	6.6	-6	5.6	46	81	120	105
10	SODT208	STARTER	HP	18/09/2022	1.3	4.1	0	4.3	41	72	100	82
11	SODT054	ELITE	PP	25/08/2022	7.7	7.6	-1.9	1.2	32	60	78	69
12	SODT062	ELITE	PP	26/08/2022	8.7	7.2	-0.9	1.5	32	54	67	44
13	SODT183	FORWARD	PP	16/09/2022	5.9	3.5	-1.8	1.1	37	65	90	60
14	SODT064	McLAREN	PP	12/10/2021	6.8	8	-1.7	2.5	39	61	81	48
15	SODT275	ENDURE	PP	29/09/2022	7.1	10	3.6	2.9	39	67	86	55
16	SODT118	STARTER	PP	9/09/2022	5	7.3	-3.3	2.9	37	55	85	74
17	SODT239	STARTER	PP	22/09/2022	1.4	4.9	1.1	3.3	40	68	96	61
18	SODT233	STARTER	PP	21/09/2022	5.3	3.7	-2.1	2.9	38	62	87	74
19	SODT085	McLAREN	PP	29/08/2022	2.2	5.9	1.3	3.8	36	58	76	49
20	SODT159	TRUST	PENDING	26/08/2022	6.1	5.9	-1.6	4	42	73	99	80
21	SODT200	SODR118	PENDING	18/09/2022	0.9	2.9	-3.3	4.8	42	69	96	70
22	SODT326	SODR063	HP	12/10/2022	-1.1	4.1	1.6	6.8	41	67	100	100
23	SODT207	QUERIDO	PP	17/09/2022	2.5	3.3	1.4	4.1	46	80	114	77
24	SODT328	NIXON	PP	13/10/2022	-2.3	3.6	-0.3	6.2	42	66	92	72
25	SODT304	NIXON	PP	5/10/2022	-3.7	1.1	-3	5.5	49	78	109	89
26	SODT212	SODR035	PP	19/09/2022	0.7	4	3	4.7	39	68	93	67
27	SODT242	MASTER	PP	23/09/2022	-0.8	3.1	1.9	6.1	44	74	100	72
28	SODT204	MASTER	PP	18/09/2022	-1.9	-1.4	-0.2	7.1	49	86	119	99
29	SODU459	BROADWAY	PP	26/10/2021	1.8	1.4	-0.2	4.4	42	71	100	75
30	SODU460	LANCELOT	PP	7/10/2021	4.9	6.7	1.3	3	33	56	82	66
31	SODT156	STARTER	PP	14/09/2022	-1.8	2.6	-1.9	5.1	40	66	103	92
32	SODT206	MASTER	PP	18/09/2022	1.4	2	2.1	6.5	53	100	131	120
33	SODT314	SODR118	PP	8/10/2022	7	7.1	-2.8	2.9	38	68	93	59
34	SODT073	TRUST	PP	27/08/2022	9.3	8.6	-2.1	0.7	33	55	73	38
35	SODT055	SODP007	HP	24/08/2022	-0.1	4.4	-0.2	5	42	74	100	71
36	SODT164	FORWARD	PP	15/09/2022	6.6	2.5	-2.7	2	30	53	65	42
37	SODT234	FORWARD	HP	21/09/2022	5.2	4.4	-0.1	2.7	40	62	80	51
38	SODT227	ENDURE	PP	20/09/2022	10	9.1	1.8	1.4	39	63	75	38
39	SODT048	TRUST	PP	24/08/2022	11.5	9.1	-3.1	0.7	35	58	75	47
40	SODT292	SODQ006	PP	3/10/2022	0.5	2	-5	4.7	42	73	102	81
41	SODT330	NIXON	PP	14/10/2022	-1.2	3.9	-0.3	5.2	41	79	108	100
42	SODT324	SODR196	PP	11/10/2022	-2.5	3.8	0.4	6.4	46	69	102	60
43	SODT262	SODR118	PP	27/09/2022	-0.4	4.6	-2.6	6.9	46	69	94	56
Yalgoo Average					3.7	5.1	-0.9	3.9	41	69	94	69
Breed Average					3.4	2.9	-0.5	3.9	34	57	80	67

## Ivy Bank - EBV Summary June Run 2024

46	AHGT025	RHXQ131	PP	28/07/2022	-0.6	0.7	-1.5	3.7	32	48	69	55
47	AHGT020	RHXQ131	N/T	16/09/2022	1.5	3.3	-1.6	4	37	55	76	50
48	AHGT008	KLING	N/T	9/09/2022	7.5	7.8	-2.7	3.1	36	58	75	60
49	AHGT029	RHXQ131	N/T	28/09/2022	-2.1	-0.4	-1.8	4.5	35	54	78	61
50	AHGT045	RHXQ131	N/T	30/10/2022	-0.9	-0.2	-1.3	4.8	34	51	71	60
51	AHGT026	RHXQ131	N/T	22/09/2022	1.2	2	-1.5	3.3	31	46	66	46
52	AHGT035	RHXQ131	N/T	8/10/2022	-2.4	0.4	-2.1	4.3	33	50	70	61



**Top 30% of Hereford 2022 Drop**

**Top 10% of Hereford 2022 Drop**

MILK	SC	DC	CWT	EMA	RIB	RUMP	RBV	IMF	STH SR	NTH SR	SBMI	NBMI
19	4.3	-5.6	56	4.5	1.6	2.3	0.1	1.7	\$177	\$169	\$185	\$133
27	2.9	-6.7	68	6.8	1.8	2.2	0.8	1.2	\$220	\$206	\$232	\$167
29	1.2	-2.9	75	8.5	1.4	1.2	1.4	2.3	\$219	\$201	\$235	\$171
24	2.3	-2.8	72	6.6	1.1	0.6	1.2	1.8	\$201	\$180	\$206	\$148
31	2.5	-2.9	62	8	0.6	0.2	2	1.7	\$185	\$171	\$201	\$146
30	4.3	-7.4	72	9.2	2.6	2.7	1.1	1.4	\$233	\$222	\$246	\$170
25	2.8	-4.6	73	9	1.9	1.6	1.5	1.9	\$213	\$198	\$218	\$156

**NEW PEDIGREE INFORMATION AND EBV'S AVAILABLE SALE DAY FOLLOWING DNA TESTING**

18	4.5	-6.3	80	5.4	1.1	1.5	1.1	0.8	\$226	\$209	\$225	\$156
20	2	-3.5	71	5.8	2.6	3.5	-0.5	1.7	\$177	\$163	\$177	\$127
11	3.6	-5.8	57	7.7	1.8	2.5	1.3	1.4	\$191	\$196	\$196	\$142
14	2.6	-5	55	7.9	2.3	3.1	0.8	1.8	\$181	\$183	\$189	\$135
19	2.2	-6	71	8	2	2.9	1	2.2	\$215	\$209	\$213	\$153
13	1.4	-3	63	6.5	1.5	1.8	0.9	2.1	\$197	\$192	\$205	\$141
24	1.6	-4.3	62	6.5	1.6	1.2	0.9	1.4	\$195	\$180	\$206	\$142
18	0.3	3.7	70	7	1.9	2.6	0.9	1	\$169	\$163	\$178	\$128
19	0.8	-5	74	7.2	3.3	4.5	0	2.5	\$211	\$201	\$201	\$136
21	1.8	-4.4	68	6.5	1.2	1	1.1	1.5	\$172	\$161	\$180	\$135
11	1.1	-4.7	53	6.7	2.6	3.3	-0.1	2.9	\$183	\$177	\$174	\$118
17	4.5	-5	65	4.4	1.8	2.6	0.2	1.5	\$201	\$192	\$206	\$148
22	2.1	-3	66	5.5	1.5	2.2	1	1.3	\$177	\$163	\$176	\$124
15	1.6	-3.6	62	6.3	0.6	0.8	1.6	0.9	\$162	\$148	\$157	\$114
26	3.1	-3.5	80	7.4	1.2	1.2	1.3	2.1	\$223	\$202	\$223	\$158
19	5	-5.3	58	5.2	2	2.9	0	1.3	\$163	\$149	\$148	\$99
20	4.1	-4.4	73	4.4	1.1	2.2	0.6	1.1	\$178	\$162	\$163	\$113
21	2.6	-2.4	63	4.6	1.5	2.1	0.8	0.6	\$164	\$149	\$165	\$113
17	4.4	-4.2	58	7.2	1.6	1	0.9	2.2	\$193	\$176	\$181	\$125
20	5	-4.2	69	5.4	0.4	-0.2	1.5	1.5	\$197	\$174	\$186	\$135
24	5	-5	64	4.6	0.9	1	0.9	1.2	\$185	\$166	\$181	\$130
26	1.3	-2.6	56	6	1.4	2.7	1.5	0.4	\$157	\$149	\$171	\$124
21	0.9	-4.1	76	6.5	2.5	3.6	0.1	1.9	\$172	\$157	\$165	\$119
18	3.2	-4	90	7.4	0	-0.5	1.9	2	\$229	\$209	\$227	\$170
25	2.5	-4.1	67	5.8	2.1	2.4	1.5	0.9	\$205	\$194	\$215	\$150
25	2.9	-2.5	55	5.4	1.4	1.9	1.2	1	\$173	\$167	\$195	\$138
18	1.4	-1.9	68	6.4	1.1	1.8	1.8	0.8	\$186	\$176	\$184	\$126
19	3.5	-5.8	43	5	2	2.8	-0.6	1.9	\$153	\$144	\$156	\$115
22	1.5	-5.3	59	7.8	2.6	3.6	0.9	1.6	\$187	\$183	\$188	\$134
29	3	-4.3	60	7.7	0.6	-0.2	2	0.7	\$184	\$173	\$204	\$144
23	3.4	-2.7	57	5.4	1.4	1.7	1.2	0.8	\$172	\$168	\$201	\$147
18	3.1	-0.9	68	6	-0.2	-0.3	2.1	1.2	\$176	\$161	\$179	\$131
17	4.2	-3.4	69	5	0.4	0.3	0.4	1.8	\$175	\$155	\$170	\$124
23	2.5	-5.4	67	7.2	3	3.9	1	1	\$202	\$188	\$183	\$115
26	3.4	-4.8	56	4.5	2.2	3.1	0.4	1.5	\$183	\$165	\$174	\$115
21	2.8	-4.0	66	6.4	1.5	1.8	0.9	1.5	\$190	\$178	\$192	\$136
18	2.2	-3.3	53	3.9	0.9	1.0	0.8	0.7	\$142	\$129	\$146	\$107

**Top 30% of Hereford 2022 Drop**

**Top 10% of Hereford 2022 Drop**

13	2.7	-2	46	4.4	0.4	0.3	1.4	0.4	\$117	\$108	\$114	\$81
16	3	-3.4	53	5.2	1.1	1.2	1.2	1.4	\$158	\$150	\$154	\$107
	2.5	-5.3	53	5.3	0.5	-0.1	1.6	1.3	\$175	\$166	\$183	\$132
13	2.6	-2.7	52	5.2	1	1.2	1.1	0.9	\$133	\$123	\$124	\$86
13	2	-2.5	46	4.8	0.5	0.4	1.3	0.7	\$119	\$109	\$114	\$83
15	2.5	-3	47	5.2	0.5	0.5	1.8	0.4	\$132	\$126	\$129	\$89
9	2.3	-2.2	48	5.3	0.3	0.3	1.8	0.3	\$118	\$113	\$108	\$76

## Lot 1 YALGOO TANGO T033 (AI) (PP)

Ident: SODT033

Born: 22/08/2022

Eye Pigment: 100/100

NJW 73S M326 TRUST 100W ET (IMP USA) (ET) (P)  
 ELITE TRUST K215 (AI) (S)  
 ELITE RUTH 0219 D163 (AI) (P)  
 Sire: GLENTREVOR TRUST N909 (AI) (PP)  
 SOUTH BUKALONG WALLACE 2 (P)  
 GLENTREVOR SIRIKIT J504 (AI) (P)  
 GLENTREVOR SIRIKIT F252 (P)  
 OTAPAWA SPARK 3060 (IMP NZL) (AI) (ET) (P)  
 TOBRUK LENNOX (ET) (PP)  
 PINE HILL MARITANA A619 (AI) (P)  
 Dam: YALGOO BLUSH R231 (P)  
 ELITE 4110 H297 (AI) (PP)  
 YALGOO BLUSH N073 (AI) (ET) (P)  
 YALGOO BLUSH J102 (AI) (PP)

\$ Index Values	Percentile
Southern Self Replacing: +\$177	20
Northern Self Replacing: +\$169	20
Southern Baldy Maternal: +\$185	20
Northern Baldy Terminal: +\$133	20

Purchaser: .....  
 .....  
 Price \$: .....

June 2024 Hereford BREEDPLAN																	
	CE DIR	CE DTRS	GL	BW	200	400	600	MCW	Milk	SS	DC	Cwt	EMA	Rib	RUMP	RBY%	IMF%
EBV	+7.3	+7.9	-2.5	+2.5	+36	+61	+79	+63	+19	+4.3	-5.6	+56	+4.5	+1.6	+2.3	+0.1	+1.7
Accuracy	51%	42%	75%	73%	70%	70%	70%	65%	61%	77%	44%	60%	54%	57%	61%	55%	60%
Percentile	25	5	20	30	40	35	55	60	35	2	7	40	35	20	20	80	8

Traits Observed: GL,CE,BWT,200WT,400WT,SS,FAT,EMA,IMF,Genomics

Parent Verification: Sire: Verified, Dam: Not Verified

Notes: Safe, attractive Trust son used over heifers for his balanced performance and type. Soggy, high volume bull with a variety of uses. Fertility is the number one trait of economic importance in beef production, Whiteface cattle sit at the top of the industry and this bull excels in these traits with top 30% or better for all of them. Market/ system suitability: SM MSA F BB W HB MP

## Lot 2 YALGOO THUD T149 (AI) (PP)

Ident: SODT149

Born: 14/09/2022

Eye Pigment: 100/095

MSU TCF REVOLUTION 4R (IMP USA) (PP)  
 KCF BENNETT REVOLUTION X51 (IMP USA) (P)  
 KCF MISS PROFICIENT U201 (P)  
 Sire: WIRRUNA LEAP FORWARD L95 (ET) (PP)  
 WIRRUNA COMMANDER C68 (AI) (PP)  
 WIRRUNA MIDGE F322 (P)  
 WIRRUNA MIDGE A51 (AI) (P)  
 KCF BENNETT ENCORE Z311 (ET) (PP)  
 NJW 79Z Z311 ENDURE 173D (IMP USA) (ET) (PP)  
 BW 91H 100W RITA 79Z (ET) (P)  
 Dam: YALGOO BLUSH Q144 (AI) (P)  
 WIRRUNA ECHUCA E99 (AI) (P)  
 YALGOO BLUSH M249 (P)  
 YALGOO BLUSH J335 (ET) (P)

\$ Index Values	Percentile
Southern Self Replacing: +\$220	2
Northern Self Replacing: +\$206	2
Southern Baldy Maternal: +\$232	2
Northern Baldy Terminal: +\$167	2

Purchaser: .....  
 .....  
 Price \$: .....

June 2024 Hereford BREEDPLAN																	
	CE DIR	CE DTRS	GL	BW	200	400	600	MCW	Milk	SS	DC	Cwt	EMA	Rib	RUMP	RBY%	IMF%
EBV	+9.3	+7.6	-1.8	+2.9	+44	+77	+102	+77	+27	+2.9	-6.7	+68	+6.8	+1.8	+2.2	+0.8	+1.2
Accuracy	53%	45%	76%	74%	70%	70%	71%	67%	64%	77%	46%	61%	56%	59%	62%	57%	61%
Percentile	15	6	30	35	7	4	9	30	3	20	2	15	4	15	20	50	25

Traits Observed: GL,BWT,200WT,400WT,SS,FAT,EMA,IMF,Genomics

Parent Verification: Sire: Verified, Dam: Verified

Notes: Terrific stud sire with proven yet outcrossed genetics. Thud T149, has the phenotype, structure and performance to increase the value of your next generation. Curve bending EBV's make T149 a blanket use bull over heifers and MA cows. The cherry on top is the 3 generations of super uddered females in his maternal pedigree. Used in herd over heifers. High fertility - Top 30% + CEDIR CEDRT GL SC DC. High growth - Top 10% + for 200 400 600. Superior carcass - Top 30% EMA RIB RUMP IMF. High profit - Top 10%+ all indexes. Market/ system suitability: MSA F EU HGS BB W HB MP

## Lot 3 YALGOO SCOOP T110 (AI) (P)

Ident: SODT110

Born: 05/09/2022

Eye Pigment: 090/070

EFBEEF TFL U208 TESTED X651 (P)  
 EFBEEF BR VALIDATED B413 (IMP USA) (PP)  
 EFBEEF 4R THYRA Y865 (P)  
 Sire: WIRRUNA QUERIDO Q266 (AI) (PP)  
 WIRRUNA FLETCHER F214 (P)  
 CO-OP5 URSULA J427 (AI) (P)  
 WIRRUNA URSULA E278 (P)  
 NJW 73S W18 HOMEGROWN 8Y (IMP USA) (PP)  
 YALGOO MAFIOSO M196 (AI) (P)  
 YALGOO BEAUTY H209 (AI) (P)  
 Dam: YALGOO LIQUER Q201 (S)  
 YALGOO BANDIT J079 (AI) (P)  
 YALGOO LIQUER L074 (P)  
 YALGOO LIQUER J354 (AI) (ET) (P)

\$ Index Values	Percentile
Southern Self Replacing: +\$219	2
Northern Self Replacing: +\$201	3
Southern Baldy Maternal: +\$235	2
Northern Baldy Terminal: -\$171	2

Purchaser: .....  
 .....  
 Price \$: .....

June 2024 Hereford BREEDPLAN																	
	CE DIR	CE DTRS	GL	BW	200	400	600	MCW	Milk	SS	DC	Cwt	EMA	Rib	RUMP	RBY%	IMF%
EBV	+8.7	+5.1	-6.0	+2.3	+42	+71	+97	+53	+29	+1.2	-2.9	+75	+8.5	+1.4	+1.2	+1.4	+2.3
Accuracy	45%	33%	75%	73%	69%	68%	69%	61%	55%	77%	38%	56%	49%	53%	58%	51%	55%
Percentile	15	30	2	30	15	10	15	75	1	90	60	4	1	25	50	20	2

Traits Observed: GL,BWT,200WT,400WT,SS,FAT,EMA,IMF,Genomics

Parent Verification: Sire: Verified, Dam: Not Verified

Notes: Class act, stud sire. Our best Querido to date. Deep sided, soft, round muscled and really fluid in his movement. His sire is the breed outlier for carcass being over 6 times breed average for marbling. The progeny from the Querido sons should move the MSA dial significantly enough to add profit. Total outcross on both sides of his pedigree to most bloodlines. Used in herd over cows. Another blanket use/ multi purpose sire. High calving ease - Top 30% + CEDIR CEDRTS GL BW. Ideal carcass - Top 10% CWT EMA IMF. More profit - Top 10% all indexes. Market/ system suitability: SM MSA F HGS BB EU HB MP



**Lot 4 YALGOO TURBO T154 (AI) (PP)**

Ident: SODT154

Born: 14/09/2022

Eye Pigment: 100/100

EFBEEF TFL U208 TESTED X651 (P)  
 EFBEEF BR VALIDATED B413 (IMP USA) (PP)  
 EFBEEF 4R THYRA Y865 (P)  
 Sire: **WIRRUNA QUERIDO Q266 (AI) (PP)**  
 WIRRUNA FLETCHER F214 (P)  
 CO-OP5 URSULA J427 (AI) (P)  
 WIRRUNA URSULA E278 (P)  
 NJW 73S W18 HOMEGROWN 8Y (IMP USA) (PP)  
 YALGOO MAFIOSO M196 (AI) (P)  
 YALGOO BEAUTY H209 (AI) (P)  
 Dam: **YALGOO WHISPER Q214 (P)**  
 YALGOO ZODIAC F036 (P)  
 YALGOO WHISPER H6 (P)  
 YALGOO WHISPER F045 (P)

\$ Index Values	Percentile
Southern Self Replacing: +\$201	5
Northern Self Replacing: +\$180	10
Southern Baldy Maternal: +\$206	8
Northern Baldy Terminal: +\$148	9

Purchaser: .....

Price \$: .....

June 2024 Hereford BREEDPLAN																	
	CE DIR	CE DTRS	GL	BW	200	400	600	MCW	Milk	SS	DC	Cwt	EMA	Rib	RUMP	RBY%	IMF%
EBV	+3.4	+3.4	-1.1	+4.8	+47	+76	+106	+75	+24	+2.3	-2.8	+72	+6.6	+1.1	+0.6	+1.2	+1.8
Accuracy	44%	32%	74%	73%	68%	68%	68%	60%	53%	76%	36%	56%	49%	53%	57%	50%	54%
Percentile	50	45	40	65	3	5	6	35	8	45	60	6	5	40	70	30	7

Traits Observed: GL,BWT,200WT,400WT,SS,FAT,EMA,IMF,Genomics Parent Verification: Sire: Verified, Dam: Not Verified

Notes: A different type of Querido used over cows. A soggy, dark, loose skinned individual with more bone and power than the other Querido's I've seen. If you need to improve the MSA related carcass traits in your stud herd, have a close look at this big, classy power bull. Another complete outcross for most herds. More growth - Top 10% + 200 400 600 More profit - Top 10%+ all indexes. Market/ system suitability: MSA F EU HGS BB W

**Lot 5 YALGOO RAIN MAKER T130 (AI) (S)**

Ident: SODT130

Born: 11/09/2022

Eye Pigment: 100/100

KCF BENNETT 3008 M326 (P)  
 NJW 73S M326 TRUST 100W ET (IMP USA) (ET) (P)  
 NJW P606 72N DAYDREAM 73S (P)  
 Sire: **BEHM 100W CUDA 504C (IMP USA) (PP)**  
 KCF BENNETT 9126J R294 (P)  
 BEHM R294 JASMAN 102Y (P)  
 CPH MS WRANGLER 1W (P)  
 WIRRUNA FLETCHER F214 (P)  
 WIRRUNA KATNOOK K74 (AI) (P)  
 WIRRUNA VICTORIA G7 (AI) (P)  
 Dam: **YALGOO BLUSH P065 (AI) (ET) (H#)**  
 BENDULLA WINSTON (P)  
 YALGOO BLUSH A036 (P)  
 YALGOO BLUSH S8 (P)

\$ Index Values	Percentile
Southern Self Replacing: +\$185	15
Northern Self Replacing: +\$171	15
Southern Baldy Maternal: +\$201	10
Northern Baldy Terminal: +\$146	10

Purchaser: .....

Price \$: .....

June 2024 Hereford BREEDPLAN																	
	CE DIR	CE DTRS	GL	BW	200	400	600	MCW	Milk	SS	DC	Cwt	EMA	Rib	RUMP	RBY%	IMF%
EBV	+7.4	+7.0	-4.1	+2.8	+42	+63	+82	+46	+31	+2.5	-2.9	+62	+8.0	+0.6	+0.2	+2.0	+1.7
Accuracy	44%	37%	75%	72%	68%	67%	68%	63%	60%	76%	40%	60%	54%	57%	59%	52%	58%
Percentile	25	9	7	35	15	30	45	85	1	35	60	25	1	65	80	5	8

Traits Observed: GL,BWT,200WT,400WT,SS,FAT,EMA,IMF,Genomics Parent Verification: Sire: Verified, Dam: Verified

Notes: A big hipped, moderate, wide based bull who is accurate in his structure. T130 is a simply made bull with a tight sheath, gre at testicles and has the functionality to last and produce at a low cost. He was used in herd for all of these traits and his ripping dam. A balanced genotype, completes the package. Well Balanced - Top 30% + 11 traits. High profit- Top 15%+ all indexes. Market/ system suitability: MSA F BB HB MP

**Lot 6 YALGOO STAND ALONE T201 (AI) (PP)**

Ident: SODT201

Born: 18/09/2022

Eye Pigment: 100/100

SCHU-LAR ON TARGET 22S (IMP USA) (ET) (P)  
 KCF BENNETT ENCORE Z311 (ET) (PP)  
 KCF MISS REVOLUTION X338 (ET) (P)  
 Sire: **NJW 79Z Z311 ENDURE 173D (IMP USA) (ET) (PP)**  
 NJW 73S M326 TRUST 100W ET (IMP USA) (ET) (P)  
 BW 91H 100W RITA 79Z (ET) (P)  
 REMITALL RITA 91H (P)  
 EFBEEF TFL U208 TESTED X651 (P)  
 EFBEEF BR VALIDATED B413 (IMP USA) (PP)  
 EFBEEF 4R THYRA Y865 (P)  
 Dam: **YALGOO BLUSH Q005 (AI) (P)**  
 ELITE 4110 H297 (AI) (PP)  
 YALGOO BLUSH N088 (AI) (ET) (P)  
 YALGOO BLUSH J102 (AI) (PP)

\$ Index Values	Percentile
Southern Self Replacing: +\$233	1
Northern Self Replacing: +\$222	1
Southern Baldy Maternal: +\$244	1
Northern Baldy Terminal: +\$170	2

Purchaser: .....

Price \$: .....

June 2024 Hereford BREEDPLAN																	
	CE DIR	CE DTRS	GL	BW	200	400	600	MCW	Milk	SS	DC	Cwt	EMA	Rib	RUMP	RBY%	IMF%
EBV	+10.3	+8.8	+1.1	+1.6	+42	+76	+94	+52	+30	+4.3	-7.4	+72	+9.2	+2.6	+2.7	+1.1	+1.4
Accuracy	52%	42%	77%	74%	71%	70%	71%	66%	63%	78%	43%	62%	57%	59%	61%	55%	61%
Percentile	7	3	90	20	15	5	20	75	1	2	1	6	1	2	9	35	15

Traits Observed: GL,BWT,200WT,400WT,SS,FAT,EMA,IMF,Genomics Parent Verification: Sire: Verified, Dam: Not Verified

Notes: Maternal brother sold as lot 1 into Steve and Debbie Reid's great herd. Dam is efficient, attractive and has an excellent udder. She could be our best Blush. This moderate, dark Endure is the highest indexing bull in the sale and was used over cows. Blanket use bull to add carcass, fertility and produce highly efficient, beautiful uddered females. High calving ease - Top 20%+ CEDIR CEDRTS BW Curve bending growth - Top 30%+ 200 400 600 Extreme Profit - Top 1% SSR and NSR indexes. Market/ system suitability: SM MSA F BB HB MP

## Lot 7 YALGOO SALUTE T245 (AI) (PP)

Ident: SODT245

Born: 23/09/2022

Eye Pigment: 100/100

SCHU-LAR ON TARGET 22S (IMP USA) (ET) (P)  
 KCF BENNETT ENCORE Z311 (ET) (PP)  
 KCF MISS REVOLUTION X338 (ET) (P)  
 Sire: **NJW 79Z Z311 ENDURE 173D (IMP USA) (ET) (PP)**  
 NJW 73S M326 TRUST 100W ET (IMP USA) (ET) (P)  
 BW 91H 100W RITA 79Z (ET) (P)  
 REMITALL RITA 91H (P)  
 ALLENDALE ANZAC E114 (PP)  
 CURRACABARK MATTHEW M101 (AI) (ET) (PP)  
 CURRACABARK MINERVA D449 (AI) (P)  
 Dam: **YALGOO NETTIE PIE Q137 (P)**  
 NJW 73S M326 TRUST 100W ET (IMP USA) (ET) (P)  
 YALGOO NETTIE PIE M005 (AI) (P)  
 OOLAY NETTIE PIE J071 (P)

\$ Index Values	Percentile
Southern Self Replacing: +\$213	3
Northern Self Replacing: +\$198	4
Southern Baldy Maternal: +\$218	4
Northern Baldy Terminal: +\$156	6

Purchaser: .....

Price \$: .....

June 2024 Hereford BREEDPLAN																	
	CE DIR	CE DTRS	GL	BW	200	400	600	MCW	Milk	SS	DC	Cwt	EMA	Rib	RUMP	RBY%	IMF%
EBV	+4.0	+8.2	+4.0	+4.6	+43	+77	+107	+88	+25	+2.8	-4.6	+73	+9.0	+1.9	+1.6	+1.5	+1.9
Accuracy	52%	43%	76%	74%	70%	70%	71%	66%	62%	78%	42%	61%	56%	59%	61%	56%	60%
Percentile	45	4	100	65	9	4	5	15	6	25	20	5	1	10	35	15	5

Traits Observed: GL,BWT,200WT,400WT,SS,FAT,EMA,IMF,Genomics

Parent Verification: Sire: Verified, Dam: Not Verified

Notes: Our best Endure to date. Maternal brother was a 23 sale feature and sold to the McLarens excellent Nerstane herd. Thick, long bodied and slick skinned with a tight sheath. A power bull with top 1% EMA and sensible calving ease. Heavy payload -Top 10%+ 200 400 600 Unique carcass - Top 5% EMA IMF Extra Profit - Top 5%+ SSR NSR SBMI indexes. Market/ system suitability: MSA F EU HGS BB

## Lot 8 YALGOO TYLER T133 (P)

Ident: SODT133

Born: 12/09/2022

Eye Pigment: 100/100

ALLENDALE YACKA (AI) (P)  
 ALLENDALE ANZAC E114 (PP)  
 ALLENDALE DAWN B22 (AI) (ET) (P)  
 Sire: **WIRRUNA NIXON N168 (AI) (TW) (PP)**  
 ELITE 4110 E212 (AI) (PP)  
 WIRRUNA DIDO H45 (AI) (PP)  
 WIRRUNA DIDO F371 (ET) (P)  
 ALLENDALE ANZAC E114 (PP)  
 WIRRUNA MATTY M288 (AI) (ET) (PP)  
 WIRRUNA CIRCLE H13 (AI) (PP)  
 Dam: **YALGOO VANESSA Q066 (AI) (P)**  
 NJW 73S M326 TRUST 100W ET (IMP USA) (ET) (P)  
 YALGOO VANESSA J114 (AI) (P)  
 YALGOO VANESSA E054 (ET) (P)

\$ Index Values	Percentile
Southern Self Replacing: +\$187	15
Northern Self Replacing: +\$172	15
Southern Baldy Maternal: +\$186	20
Northern Baldy Terminal: +\$137	20

NEW PEDIGREE INFORMATION  
 AND EBV'S AVAILABLE SALE DAY  
 FOLLOWING DNA TESTING

June 2024 Hereford BREEDPLAN																	
	CE DIR	CE DTRS	GL	BW	200	400	600	MCW	Milk	SS	DC	Cwt	EMA	Rib	RUMP	RBY%	IMF%
EBV	+0.3	+4.6	-1.9	+5.3	+46	+81	+108	+97	+18	+2.2	-2.9	+75	+6.0	+0.9	+1.3	+0.7	+2.0
Accuracy	50%	44%	66%	74%	68%	68%	68%	63%	58%	71%	46%	58%	53%	56%	60%	55%	58%
Percentile	75	35	30	75	4	2	5	7	45	50	60	4	10	50	45	55	4

Traits Observed: BWT,400WT,SS,FAT,EMA,IMF

Parent Verification: Sire: Not Tested, Dam: Not Tested

Notes: Powerhouse sire prospect by Nixon. Bold, expressive, muscle pattern with cover and doability. His dam is rising to the top of the herd. I love the maturity pattern, softness and grunt in this bull. High growth - Top 5%+ 200 400 600 MSA carcass - Top 10% + EMA IMF. Market/ system suitability: MSA F EU HGS BB W

## Lot 9 YALGOO TAMBO T185 (AI) (PP)

Ident: SODT185

Born: 16/09/2022

Eye Pigment: 100/100

LIMEHILLS STAMPER 110429 (P)  
 LIMEHILLS STAMPER 140064 (P)  
 LIMEHILLS LEONORA 749 (P)  
 Sire: **LIMEHILLS STARTER 160062 (IMP NZL) (PP)**  
 OKAWA ELECTRA 1117 (P)  
 LIMEHILLS BEAUTY 140225 (P)  
 LIMEHILLS BEAUTY 110483 (P)  
 NJW 73S M326 TRUST 100W ET (IMP USA) (ET) (P)  
 YALGOO JET M048 (AI) (P)  
 YALGOO DONNA BELLA D040 (AI) (P)  
 Dam: **YALGOO MELODY P035 (P)**  
 YALGOO BREAK OUT G075 (AI) (P)  
 YALGOO MELODY M144 (P)  
 YALGOO MELODY H46 (P)

\$ Index Values	Percentile
Southern Self Replacing: +\$226	1
Northern Self Replacing: +\$209	2
Southern Baldy Maternal: +\$225	3
Northern Baldy Terminal: +\$156	6

Purchaser: .....

Price \$: .....

June 2024 Hereford BREEDPLAN																	
	CE DIR	CE DTRS	GL	BW	200	400	600	MCW	Milk	SS	DC	Cwt	EMA	Rib	RUMP	RBY%	IMF%
EBV	+4.2	+6.6	-6.0	+5.6	+46	+81	+120	+105	+18	+4.5	-6.3	+80	+5.4	+1.1	+1.5	+1.1	+0.8
Accuracy	51%	44%	75%	73%	70%	69%	70%	65%	63%	77%	43%	59%	53%	57%	61%	55%	59%
Percentile	45	15	2	80	4	2	1	3	45	1	3	2	20	40	40	35	40

Traits Observed: GL,BWT,200WT,400WT,SS,FAT,EMA,IMF,Genomics

Parent Verification: Sire: Verified, Dam: Not Verified

Notes: Absolute scale crushing Limehills Starter son. Prototype sire with width, growth, quality and structure. He is the only 22 born bull that comes up on the database with his combination of Calving ease, gestation length and growth. His data is impressive, but his type is what put's him on a pedestal for bull breeders. High growth - Top 1% + 600 High fertility - Top 5%+ SC GL DC High profit - Top 5%+ SSR NSR SBMI indexes. Market/ system suitability: F EU HGS BB W



## Lot 10 YALGOO SPROCKET T208 (AI) (P)

Ident: SODT208

Born: 18/09/2022

Eye Pigment: 100/095

LIMEHILLS STAMPER 110429 (P)  
 LIMEHILLS STAMPER 140064 (P)  
 LIMEHILLS LEONORA 749 (P)  
 Sire: LIMEHILLS STARTER 160062 (IMP NZL) (PP)  
 OKAWA ELECTRA 1117 (P)  
 LIMEHILLS BEAUTY 140225 (P)  
 LIMEHILLS BEAUTY 110483 (P)  
 NJW 73S W18 HOMEGROWN 8Y (IMP USA) (P)  
 YALGOO MATADOR N025 (AI) (PP)  
 YALGOO BLUSH J137 (P)  
 Dam: YALGOO VANESSA Q168 (P)  
 YALGOO JUROR L071 (AI) (PP)  
 YALGOO VANESSA N221 (P)  
 YALGOO VANESSA L189 (P)

\$ Index Values	Percentile
Southern Self Replacing: +\$177	20
Northern Self Replacing: +\$163	20
Southern Baldy Maternal: +\$177	25
Northern Baldy Terminal: +\$127	30

Purchaser: .....

Price \$: .....

June 2024 Hereford BREEDPLAN																	
	CE DIR	CE DTRS	GL	BW	200	400	600	MCW	Milk	SS	DC	Cwt	EMA	Rib	RUMP	RBV%	IMF%
EBV	+1.3	+4.1	+0.0	+4.3	+41	+72	+100	+82	+20	+2.0	-3.5	+71	+5.8	+2.6	+3.5	-0.5	+1.7
Accuracy	50%	42%	75%	73%	69%	68%	69%	65%	61%	77%	42%	58%	52%	56%	60%	54%	57%
Percentile	70	40	65	60	15	9	15	25	30	60	45	7	15	2	3	95	8

Traits Observed: GL,BWT,200WT,400WT,SS,FAT,EMA,IMF,Genomics

Parent Verification: Sire: Verified, Dam: Not Verified

Notes: Carcase improving Starter son with growth. Has the running gear to last and be a low COP bull. His small, efficient dam would wean the highest % of her body weight of any and still keeps herself in a 365 day calving pattern. She's a prototype for sustainable beef production. Curve bending growth - Top 15%+ 200 400 600 Balanced carcase - Top 15%+ EMA IMF RIB RUMP. Market/ system suitability: MSA F EU HGS BB W

## Lot 11 YALGOO TORQUE T054 (AI) (PP)

Ident: SODT054

Born: 25/08/2022

Eye Pigment: 100/100

KCF BENNETT REVOLUTION X51 (IMP USA) (P)  
 WIRRUNA MALAMUTE M202 (AI) (PP)  
 WIRRUNA WINIFRED H237 (P)  
 Sire: ELITE M202 Q008 (PP)  
 NJW 73S M326 TRUST 100W ET (IMP USA) (ET) (P)  
 ELITE LASSIE 4300 M86 (AI) (P)  
 ELITE LASSIE 0219 D76 (AI) (P)  
 OTAPAWA SPARK 3060 (IMP NZL) (AI) (ET) (P)  
 TOBRUK LENNOX (ET) (PP)  
 PINE HILL MARITANA A619 (AI) (P)  
 Dam: YALGOO VANESSA R080 (P)  
 NJW 73S M326 TRUST 100W ET (IMP USA) (ET) (P)  
 YALGOO VANESSA N023 (AI) (P)  
 YALGOO VANESSA E321 (ET) (P)

\$ Index Values	Percentile
Southern Self Replacing: +\$191	10
Northern Self Replacing: +\$196	4
Southern Baldy Maternal: +\$196	15
Northern Baldy Terminal: +\$142	15

Purchaser: .....

Price \$: .....

June 2024 Hereford BREEDPLAN																	
	CE DIR	CE DTRS	GL	BW	200	400	600	MCW	Milk	SS	DC	Cwt	EMA	Rib	RUMP	RBV%	IMF%
EBV	+7.7	+7.6	-1.9	+1.2	+32	+60	+78	+69	+11	+3.6	-5.8	+57	+7.7	+1.8	+2.5	+1.3	+1.4
Accuracy	41%	33%	74%	72%	67%	66%	67%	59%	51%	75%	36%	54%	47%	52%	56%	49%	53%
Percentile	20	6	30	15	60	40	55	45	91	6	5	40	47%	15	15	25	15

Traits Observed: GL,CE,BWT,200WT,400WT,SS,FAT,EMA,IMF,Genomics

Parent Verification: Sire: Verified, Dam: Not Verified

Notes: Dark, densely made Q8 son. Q8's are new to us and they are terrific industry cattle. Phenotypically they are big hipped, mobile and neatly made. Genotypically, they are fertile, extreme muscled with high calving ease and IMF. High fertility - Top 30%+ CEDIR CEDRTS GL BW SC DC Good carcase - Top 30%+ EMA RIB RUMP IMF RBV. Market/ system suitability: SM MSA F BB HB MP

## Lot 12 YALGOO TROOPER T062 (AI) (PP)

Ident: SODT062

Born: 26/08/2022

Eye Pigment: 100/100

KCF BENNETT REVOLUTION X51 (IMP USA) (P)  
 WIRRUNA MALAMUTE M202 (AI) (PP)  
 WIRRUNA WINIFRED H237 (P)  
 Sire: ELITE M202 Q008 (PP)  
 NJW 73S M326 TRUST 100W ET (IMP USA) (ET) (P)  
 ELITE LASSIE 4300 M86 (AI) (P)  
 ELITE LASSIE 0219 D76 (AI) (P)  
 TOBRUK LENNOX (ET) (PP)  
 YALGOO PARAGUAY P240 (P)  
 YALGOO MEAGAN L044 (AI) (P)  
 Dam: YALGOO VANESSA R062 (P)  
 YALGOO ZODIAC G027 (AI) (P)  
 YALGOO VANESSA J198 (P)  
 YALGOO VANESSA G125 (P)

\$ Index Values	Percentile
Southern Self Replacing: +\$181	15
Northern Self Replacing: +\$183	9
Southern Baldy Maternal: +\$189	20
Northern Baldy Terminal: +\$135	20

Purchaser: .....

Price \$: .....

June 2024 Hereford BREEDPLAN																	
	CE DIR	CE DTRS	GL	BW	200	400	600	MCW	Milk	SS	DC	Cwt	EMA	Rib	RUMP	RBV%	IMF%
EBV	+8.7	+7.2	-0.9	+1.5	+32	+54	+67	+44	+14	+2.6	-5.0	+55	+7.9	+2.3	+3.1	+0.8	+1.8
Accuracy	39%	28%	74%	71%	67%	66%	66%	58%	51%	75%	33%	53%	46%	51%	55%	48%	51%
Percentile	15	8	45	20	60	60	80	85	75	30	15	45	1	4	5	50	7

Traits Observed: GL,CE,BWT,200WT,400WT,SS,FAT,EMA,IMF,Genomics

Parent Verification: Sire: Verified, Dam: Verified

Notes: Lotted next to his brother lot 11, for his similar attributes. B- muscling with calving ease, style and mobility. High fertility - Top 30%+ CEDIR CEDRTS BW SC DC Strong carcase - Top 10% EMA RIB RUMP IMF. Market/ system suitability: SM MSA F BB HB MP

## Lot 13 YALGOO TOGA T183 (AI) (PP)

Ident: SODT183

Born: 16/09/2022

Eye Pigment: 100/100

MSU TCF REVOLUTION 4R (IMP USA) (PP)  
 KCF BENNETT REVOLUTION X51 (IMP USA) (P)  
 KCF MISS PROFICIENT U201 (P)  
 Sire: **WIRRUNA LEAP FORWARD L95 (ET) (PP)**  
 WIRRUNA COMMANDER C68 (AI) (PP)  
 WIRRUNA MIDGE F322 (P)  
 WIRRUNA MIDGE A51 (AI) (P)  
 OTAPAWA SPARK 3060 (IMP NZL) (AI) (ET) (P)  
 TOBRUK LENNOX (ET) (PP)  
 PINE HILL MARITANA A619 (AI) (P)  
 Dam: **YALGOO VANESSA Q071 (P)**  
 ALLENDALE WATERHOUSE D1 (PP)  
 YALGOO VANESSA H182 (AI) (P)  
 YALGOO VANESSA C118 (P)

\$ Index Values	Percentile
Southern Self Replacing: +\$215	2
Northern Self Replacing: +\$209	2
Southern Baldy Maternal: +\$213	5
Northern Baldy Terminal: +\$153	7

Purchaser: .....

Price \$: .....

June 2024 Hereford BREEDPLAN																	
	CE DIR	CE DTRS	GL	BW	200	400	600	MCW	Milk	SS	DC	Cwt	EMA	Rib	RUMP	RBY%	IMF%
EBV	+5.9	+3.5	-1.8	+1.1	+37	+65	+90	+60	+19	+2.2	-6.0	+71	+8.0	+2.0	+2.9	+1.0	+2.2
Accuracy	52%	45%	75%	73%	70%	69%	70%	66%	63%	77%	46%	60%	55%	58%	62%	57%	60%
Percentile	35	45	30	15	35	25	30	65	35	50	4	7	1	8	7	35	3

Traits Observed: GL,BWT,200WT,400WT,SS,FAT,EMA,IMF,Genomics

Parent Verification: Sire: Verified, Dam: Not Verified

Notes: A homozygous polled rascal with B- muscling. This Leap forward son, is a real profit driver. A blanket use bull over heifers and cows, plus he adds value in every trait. Curve bending growth - Top 30% + BW 600 High carcass merit - Top 5%+ EMA and IMF Extra profit - Top 5% SSR NSR SBMI indexes. Market/ system suitability: SM MSA F HGS BB HB MP

## Lot 14 YALGOO TENTERFIELD T064 (AI) (PP)

Ident: SODT064

Born: 26/08/2022

Eye Pigment: 100/100

WIRRUNA JUSTIN J13 (AI) (PP)  
 WIRRUNA MCLAREN M175 (AI) (PP)  
 WIRRUNA LORNA J413 (P)  
 Sire: **TARCOMBE MCLAREN Q203 (AI) (PP)**  
 MOUNT DIFFICULT CADBURY (AI) (P)  
 TARCOMBE LAST DAY M174 (AI) (ET) (P)  
 WIRRUNA LAST DAY B16 (AI) (H#)  
 OTAPAWA SPARK 3060 (IMP NZL) (AI) (ET) (P)  
 TOBRUK LENNOX (ET) (PP)  
 PINE HILL MARITANA A619 (AI) (P)  
 Dam: **YALGOO MINERVA R146 (P)**  
 WIRRUNA ECHUCA E99 (AI) (P)  
 YALGOO MINERVA N105 (P)  
 YALGOO MINERVA H117 (AI) (P)

\$ Index Values	Percentile
Southern Self Replacing: +\$197	7
Northern Self Replacing: +\$192	5
Southern Baldy Maternal: +\$205	8
Northern Baldy Terminal: +\$141	15

Purchaser: .....

Price \$: .....

June 2024 Hereford BREEDPLAN																	
	CE DIR	CE DTRS	GL	BW	200	400	600	MCW	Milk	SS	DC	Cwt	EMA	Rib	RUMP	RBY%	IMF%
EBV	+6.8	+8.0	-1.7	+2.5	+39	+61	+81	+48	+13	+1.4	-3.0	+63	+6.5	+1.5	+1.8	+0.9	+2.1
Accuracy	46%	35%	74%	73%	69%	68%	69%	61%	53%	75%	39%	59%	53%	56%	59%	52%	59%
Percentile	25	5	30	30	25	35	50	85	85	60	20	6	25	30	40	4	

Traits Observed: GL,CE,BWT,200WT,400WT,SS,FAT,EMA,IMF,Genomics

Parent Verification: Sire: Verified, Dam: Not Verified

Notes: High class McLaren son with B- muscle (Top 10% EMA) and extra IMF. Three carcass traits producers need coupled to differentiate their cattle on merit based carcass grids. High calving ease - Top 30%+ CEDIR CEDRTS GL BW Strong carcass - Top 10%+ EMA and IMF. Market/ system suitability: SM MSA F BB HB MP

## Lot 15 YALGOO SNAP T275 (AI) (PP)

Ident: SODT275

Born: 29/09/2022

Eye Pigment: 100/100

SCHU-LAR ON TARGET 22S (IMP USA) (ET) (P)  
 KCF BENNETT ENCORE Z311 (ET) (PP)  
 KCF MISS REVOLUTION X338 (ET) (P)  
 Sire: **NJW 79Z Z311 ENDURE 173D (IMP USA) (ET) (PP)**  
 NJW 73S M326 TRUST 100W ET (IMP USA) (ET) (P)  
 BW 91H 100W RITA 79Z (ET) (P)  
 REMITALL RITA 91H (P)  
 SOUTH BUKALONG WALLACE 2 (P)  
 GLENTREVOR WALLACE H427 (AI) (PP)  
 GLENTREVOR MARITANA F240 (P)  
 Dam: **YALGOO NETTIE PIE P018 (AI) (P)**  
 NJW 73S M326 TRUST 100W ET (IMP USA) (ET) (P)  
 YALGOO NETTIE PIE M005 (AI) (P)  
 OOLGAY NETTIE PIE J071 (P)

\$ Index Values	Percentile
Southern Self Replacing: +\$195	8
Northern Self Replacing: +\$180	10
Southern Baldy Maternal: +\$206	8
Northern Baldy Terminal: +\$142	15

Purchaser: .....

Price \$: .....

June 2024 Hereford BREEDPLAN																	
	CE DIR	CE DTRS	GL	BW	200	400	600	MCW	Milk	SS	DC	Cwt	EMA	Rib	RUMP	RBY%	IMF%
EBV	+7.1	+10.0	+3.6	+2.9	+39	+67	+86	+55	+24	+1.6	-4.3	+62	+6.5	+1.6	+1.2	+0.9	+1.4
Accuracy	54%	44%	77%	74%	71%	70%	71%	66%	63%	78%	44%	62%	57%	60%	62%	57%	61%
Percentile	25	1	99	35	25	20	35	70	8	75	30	25	6	20	50	40	15

Traits Observed: GL,BWT,200WT,400WT,SS,FAT,EMA,IMF,Genomics

Parent Verification: Sire: Verified, Dam: Not Verified

Notes: Top end Endure with B- muscle. Extra thick and soft with butt shape and an expressive round muscle pattern. Strong structure, balanced performance and an excellent Wallace dam makes Snap a good sire option. High maternal - Top 30% CEDRTS MILK DC High Profit Top 10%+ SSR NSR SBMI Indexes. Market/ system suitability: SM MSA F BB HB MP



**Lot 16 YALGOO TROMBONE T118 (AI) (PP)**

Ident: SODT118

Born: 09/09/2022

Eye Pigment: 100/095

LIMEHILLS STAMPER 110429 (P)  
 LIMEHILLS STAMPER 140064 (P)  
 LIMEHILLS LEONORA 749 (P)  
 Sire: LIMEHILLS STARTER 160062 (IMP NZL) (PP)  
 OKAWA ELECTRA 1117 (P)  
 LIMEHILLS BEAUTY 140225 (P)  
 LIMEHILLS BEAUTY 110483 (P)  
 NJW 73S W18 HOMETOWN 10Y (IMP USA) (P)  
 NJW 135U 10Y HOMETOWN 27A (IMP USA) (P)  
 NJW 4037 34S DURANGO VACA 135U (P)  
 Dam: YALGOO BLUSH Q055 (AI) (P)  
 DAYS CALIBRE G74 (PP)  
 YALGOO BLUSH M118 (P)  
 YALGOO BLUSH A036 (P)

\$ Index Values	Percentile
Southern Self Replacing: +\$169	25
Northern Self Replacing: +\$163	20
Southern Baldy Maternal: +\$178	25
Northern Baldy Terminal: +\$128	25

Purchaser: .....  
 .....  
 Price \$: .....

June 2024 Hereford BREEDPLAN																	
	CE DIR	CE DTRS	GL	BW	200	400	600	MCW	Milk	SS	DC	Cwt	EMA	Rib	RUMP	RBY%	IMF%
EBV	+5.0	+7.3	-3.3	+2.9	+37	+55	+85	+74	+18	+0.3	-3.7	+70	+7.0	+1.9	+2.6	+0.9	+1.0
Accuracy	51%	44%	76%	73%	69%	69%	70%	65%	62%	77%	42%	59%	53%	57%	61%	55%	58%
Percentile	40	8	15	35	35	60	40	40	45	99	40	8	3	10	15	40	30

Traits Observed: GL,BWT,200WT,400WT,SS,FAT,EMA,IMF,Genomics Parent Verification: Sire: Verified, Dam: Not Verified

Notes: Have always admired the form and function of this Starter son. Good structure, medium maturity and B- muscling. Strong maternal pedigree and favoured 27A dam for lot 16. Curve bending performance High Muscle Top 5% EMA and B- visual muscle. Market/ system suitability: SM MSA F BB HB MP

**Lot 17 YALGOO TRIDENT T239 (AI) (PP)**

Ident: SODT239

Born: 22/09/2022

Eye Pigment: 100/100

LIMEHILLS STAMPER 110429 (P)  
 LIMEHILLS STAMPER 140064 (P)  
 LIMEHILLS LEONORA 749 (P)  
 Sire: LIMEHILLS STARTER 160062 (IMP NZL) (PP)  
 OKAWA ELECTRA 1117 (P)  
 LIMEHILLS BEAUTY 140225 (P)  
 LIMEHILLS BEAUTY 110483 (P)  
 KCF BENNETT 3008 M326 (P)  
 NJW 73S M326 TRUST 100W ET (IMP USA) (ET) (P)  
 NJW P606 72N DAYDREAM 73S (P)  
 Dam: YALGOO WHISPER Q097 (AI) (P)  
 YALGOO BREAK OUT G075 (AI) (P)  
 YALGOO WHISPER K084 (P)  
 YALGOO WHISPER D038 (P)

\$ Index Values	Percentile
Southern Self Replacing: +\$211	3
Northern Self Replacing: +\$201	3
Southern Baldy Maternal: +\$201	10
Northern Baldy Terminal: +\$136	20

Purchaser: .....  
 .....  
 Price \$: .....

June 2024 Hereford BREEDPLAN																	
	CE DIR	CE DTRS	GL	BW	200	400	600	MCW	Milk	SS	DC	Cwt	EMA	Rib	RUMP	RBY%	IMF%
EBV	+1.4	+4.9	+1.1	+3.3	+40	+68	+96	+61	+19	+0.8	-5.0	+74	+7.2	+3.3	+4.5	+0.0	+2.5
Accuracy	53%	46%	76%	73%	70%	69%	70%	66%	62%	76%	45%	60%	54%	58%	61%	56%	60%
Percentile	65	30	90	40	20	20	20	60	35	95	15	4	3	1	1	85	2

Traits Observed: GL,BWT,200WT,400WT,SS,FAT,EMA,IMF,Genomics Parent Verification: Sire: Verified, Dam: Not Verified

Notes: Slick skinned, classy, good shouldered Starter son that should garner some attention. Trident is dark, pigmented and has a real calving ease look about him. Interesting pedigree and versatile genotype, suited to conforming different types of cattle. Good growth - Top 30%+ 200 400 600 Serious carcass - Top 5% + EMA RIB RUMP IMF Strong profit - Top 10%+ SSR NSR SBMI indexes. Market/ system suitability: SM MSA F EU HGS HB MP

**Lot 18 YALGOO TRIUMPH T233 (AI) (PP)**

Ident: SODT233

Born: 21/09/2022

Eye Pigment: 100/100

LIMEHILLS STAMPER 110429 (P)  
 LIMEHILLS STAMPER 140064 (P)  
 LIMEHILLS LEONORA 749 (P)  
 Sire: LIMEHILLS STARTER 160062 (IMP NZL) (PP)  
 OKAWA ELECTRA 1117 (P)  
 LIMEHILLS BEAUTY 140225 (P)  
 LIMEHILLS BEAUTY 110483 (P)  
 EFBEEF TFL U208 TESTED X651 (P)  
 EFBEEF BR VALIDATED B413 (IMP USA) (PP)  
 EFBEEF 4R THYRA Y865 (P)  
 Dam: YALGOO VIOLA Q003 (AI) (P)  
 YALGOO LEGEND L016 (AI) (PP)  
 YALGOO VIOLA N117 (P)  
 YALGOO VIOLA L145 (P)

\$ Index Values	Percentile
Southern Self Replacing: +\$172	25
Northern Self Replacing: +\$161	25
Southern Baldy Maternal: +\$180	25
Northern Baldy Terminal: +\$135	20

Purchaser: .....  
 .....  
 Price \$: .....

June 2024 Hereford BREEDPLAN																	
	CE DIR	CE DTRS	GL	BW	200	400	600	MCW	Milk	SS	DC	Cwt	EMA	Rib	RUMP	RBY%	IMF%
EBV	+5.3	+3.7	-2.1	+2.9	+38	+62	+87	+74	+21	+1.8	-4.4	+68	+6.5	+1.2	+1.0	+1.1	+1.5
Accuracy	51%	43%	76%	73%	70%	69%	70%	66%	63%	78%	43%	60%	54%	58%	61%	55%	59%
Percentile	40	45	25	35	30	35	35	40	25	70	25	15	6	35	55	35	15

Traits Observed: GL,BWT,200WT,400WT,SS,FAT,EMA,IMF,Genomics Parent Verification: Sire: Verified, Dam: Not Verified

Notes: Nice type, with balanced data and good maternal pedigree. Validated X Starter brings growth and carcass together. A bull to run with the heifers this year and cows the next. Market/ system suitability: SM MSA F BB HB MP

## Lot 19 YALGOO TERMINATER T085 (AI) (PP)

Ident: SODT085

Born: 29/08/2022

Eye Pigment: 100/100

WIRRUNA JUSTIN J13 (AI) (PP)  
 WIRRUNA MCLAREN M175 (AI) (PP)  
 WIRRUNA LORNA J413 (P)  
 Sire: **TARCOMBE MCLAREN Q203 (AI) (PP)**  
 MOUNT DIFFICULT CADBURY (AI) (P)  
 TARCOMBE LAST DAY M174 (AI) (ET) (P)  
 WIRRUNA LAST DAY B16 (AI) (H#)  
 ELITE 4110 E212 (AI) (PP)  
 YALGOO LEGEND L016 (AI) (PP)  
 YALGOO WHISPER J108 (P)  
 Dam: **YALGOO BELLE KASHMIR R184 (P)**  
 CHURCHILL STUD 3134A (IMP USA) (PP)  
 YALGOO BELLE KASHMIR N075 (AI) (P)  
 YALGOO BELLE KASHMIR F048 (AI) (P)

\$ Index Values	Percentile
Southern Self Replacing: +\$183	15
Northern Self Replacing: +\$177	15
Southern Baldy Maternal: +\$174	25
Northern Baldy Terminal: +\$118	35

Purchaser: .....

Price \$: .....

June 2024 Hereford BREEDPLAN																	
	CE DIR	CE DTRS	GL	BW	200	400	600	MCW	Milk	SS	DC	Cwt	EMA	Rib	RUMP	RBY%	IMF%
EBV	+2.2	+5.9	+1.3	+3.8	+36	+58	+76	+49	+11	+2.1	-4.7	+53	+6.7	+2.6	+3.3	-0.1	+2.9
Accuracy	45%	32%	74%	73%	69%	68%	69%	61%	52%	77%	37%	58%	52%	55%	58%	51%	57%
Percentile	60	20	90	50	40	45	60	80	91	55	20	50	5	2	4	90	1

Traits Observed: GL,CE,BWT,200WT,400WT,SS,FAT,EMA,IMF,Genomics

Parent Verification: Sire: Verified, Dam: Not Verified

Notes: Not sure if I've seen this combination of visual muscling ( B muscle), IMF (Top 1%) and structure in many bulls of any breed. These traits are rarely 'coupled'. Here's an opportunity to get all three in this dark, moderate multi market McLaren son. Top end carcass - Top 5%+ EMA IMF B muscle. Market/ system suitability: SM MSA F BB HB MP

## Lot 20 YALGOO TAREE T159 (AI) (P)

Ident: SODT159

Born: 26/08/2022

Eye Pigment: 100/100

NJW 73S M326 TRUST 100W ET (IMP USA) (ET) (P)  
 ELITE TRUST K215 (AI) (S)  
 ELITE RUTH 0219 D163 (AI) (P)  
 Sire: **GLENTREVOR TRUST N909 (AI) (PP)**  
 SOUTH BUKALONG WALLACE 2 (P)  
 GLENTREVOR SIRIKIT J504 (AI) (P)  
 GLENTREVOR SIRIKIT F252 (P)  
 OTAPAWA SPARK 3060 (IMP NZL) (AI) (ET) (P)  
 TOBRUK LENNOX (ET) (PP)  
 PINE HILL MARITANA A619 (AI) (P)  
 Dam: **YALGOO DONNA BELLA R157 (P)**  
 YALGOO KLAXON K103 (AI) (P)  
 YALGOO DONNA BELLA M001 (P)  
 YALGOO DONNA BELLA K199 (P)

\$ Index Values	Percentile
Southern Self Replacing: +\$201	5
Northern Self Replacing: +\$192	5
Southern Baldy Maternal: +\$206	8
Northern Baldy Terminal: +\$148	9

Purchaser: .....

Price \$: .....

June 2024 Hereford BREEDPLAN																	
	CE DIR	CE DTRS	GL	BW	200	400	600	MCW	Milk	SS	DC	Cwt	EMA	Rib	RUMP	RBY%	IMF%
EBV	+6.1	+5.9	-1.6	+4.0	+42	+73	+99	+80	+17	+4.5	-5.0	+65	+4.4	+1.8	+2.6	+0.2	+1.5
Accuracy	50%	41%	74%	73%	69%	69%	68%	62%	57%	77%	42%	58%	53%	57%	61%	55%	56%
Percentile	30	20	35	55	15	8	15	25	55	1	15	20	40	15	15	75	15

Traits Observed: GL,CE,BWT,200WT,400WT,SS,FAT,EMA,IMF

Parent Verification: Sire: Not Tested, Dam: Not Tested

Notes: This Trust son is the first in a run of growth bulls. Bigger framed heifer's calf that is soggy and good sheathed. His high calving ease, growth and fertility traits makes for Top 10% indexes. Market/ system suitability: MSA F EU HGS BB MP

## Lot 21 YALGOO PREACHER T200 (P)

Ident: SODT200

Born: 18/09/2022

Eye Pigment: 100/100

KOANUI UNANIMOUS 0408 (P)  
 KOANUI TECHNO 3062 (IMP NZL) (PP)  
 KOANUI BLUSH 6455 (P)  
 Sire: **YALGOO RENDER R118 (AI) (PP)**  
 WIRRUNA JUSTIN J13 (AI) (PP)  
 YALGOO LIQUER M179 (AI) (P)  
 YALGOO K401 (AI) (P)  
 MATARIKI HOLY - SMOKE (IMP NZL) (P)  
 YALGOO BANDIT J079 (AI) (P)  
 YALGOO BETTE E235 (P)  
 Dam: **YALGOO ZELDA L039 (P)**  
 YALGOO ZED F190 (P)  
 YALGOO ZELDA J273 (P)  
 YALGOO ZELDA F165 (P)

\$ Index Values	Percentile
Southern Self Replacing: +\$177	20
Northern Self Replacing: +\$163	20
Southern Baldy Maternal: +\$176	25
Northern Baldy Terminal: +\$124	30

Purchaser: .....

Price \$: .....

June 2024 Hereford BREEDPLAN																	
	CE DIR	CE DTRS	GL	BW	200	400	600	MCW	Milk	SS	DC	Cwt	EMA	Rib	RUMP	RBY%	IMF%
EBV	+0.9	+2.9	-3.3	+4.8	+42	+69	+96	+70	+22	+2.1	-3.0	+66	+5.5	+1.5	+2.2	+1.0	+1.3
Accuracy	42%	35%	55%	71%	65%	64%	64%	58%	52%	76%	38%	53%	48%	52%	56%	49%	49%
Percentile	70	50	15	65	15	15	20	45	15	55	60	15	15	25	20	35	20

Traits Observed: BWT,200WT,400WT,SS,FAT,EMA,IMF

Parent Verification: Sire: Not Tested, Dam: Not Tested

Notes: Preacher's dam has brought in one of the heaviest weaners every year. They always have early growth and that extra bit of class to them. T200 is no different, long, mobile, sound and quiet. Ideally suited to a weaner system and producing your next generation of replacement females. Good growth - Top 30%+ 200 400 600 Good Carcass - Top 30%+ EMA RIB RUMP IMF. Market/ system suitability: MSA F EU HGS W BB







## Lot 22 YALGOO MOBSTER T326 (P)

Ident: SODT326

Born: 12/10/2022

Eye Pigment: 100/100

OTAPAWA SPARK 3060 (IMP NZL) (AI) (ET) (P)  
 TOBRUK LENNOX (ET) (PP)  
 PINE HILL MARITANA A619 (AI) (P)  
 Sire: **YALGOO RECRUIT R063 (P)**  
 NJW 73S M326 TRUST 100W ET (IMP USA) (ET) (P)  
 YALGOO BUFFY N039 (AI) (P)  
 YALGOO BUFFY H159 (P)  
 YALGOO BOULDER Z250 (P)  
 YALGOO CREEK H167 (AI) (P)  
 YALGOO CHERRYRIPE C085 (P)  
 Dam: **YALGOO MEAGAN K024 (P)**  
 ALLENDALE WATERHOUSE D1 (PP)  
 YALGOO MEAGAN H89 (AI) (P)  
 YALGOO MEAGAN B066 (P)

\$ Index Values	Percentile
Southern Self Replacing: +\$162	30
Northern Self Replacing: +\$148	35
Southern Baldy Maternal: +\$157	40
Northern Baldy Terminal: +\$114	40

Purchaser: .....

Price \$: .....

June 2024 Hereford BREEDPLAN																	
	CE DIR	CE DTRS	GL	BW	200	400	600	MCW	Milk	SS	DC	Cwt	EMA	Rib	RUMP	RBY%	IMF%
EBV	-1.1	+4.1	+1.6	+6.8	+41	+67	+100	+100	+15	+1.6	-3.6	+62	+6.3	+0.6	+0.8	+1.6	+0.9
Accuracy	37%	31%	59%	70%	64%	64%	65%	58%	54%	76%	36%	52%	47%	50%	55%	48%	50%
Percentile	85	40	91	92	15	20	15	5	70	75	45	25	7	65	65	15	35

Traits Observed: BWT,200WT,400WT,SS,FAT,EMA,IMF,Genomics

Parent Verification: Sire: Verified, Dam: Not Verified

Notes: Middling performance data, but A grade phenotype here. Super classy, growth bull with outstanding structure and a super soft skin type. He'll be one of the first you notice in the pen. Good growth - Top 30%+ 200 400 600 High yield Top 30% + EMA RBY. Market/ system suitability: EU HGS W

## Lot 23 YALGOO BRUNO T207 (AI) (TW) (PP)

Ident: SODT207

Born: 17/09/2022

Eye Pigment: 100/100

EFBEEF TFL U208 TESTED X651 (P)  
 EFBEEF BR VALIDATED B413 (IMP USA) (PP)  
 EFBEEF 4R THYRA Y865 (P)  
 Sire: **WIRRUNA QUERIDO Q266 (AI) (PP)**  
 WIRRUNA FLETCHER F214 (P)  
 CO-OP5 URSULA J427 (AI) (P)  
 WIRRUNA URSULA E278 (P)  
 ALLENDALE ANZAC E114 (PP)  
 CURRACABARK MATTHEW M101 (AI) (ET) (PP)  
 CURRACABARK MINERVA D449 (AI) (P)  
 Dam: **YALGOO ZELDA Q183 (P)**  
 NJW 73S W18 HOMETOWN 10Y (IMP USA) (P)  
 YALGOO ZELDA M234 (AI) (P)  
 YALGOO ZELDA K050 (P)

\$ Index Values	Percentile
Southern Self Replacing: +\$223	2
Northern Self Replacing: +\$202	3
Southern Baldy Maternal: +\$223	3
Northern Baldy Terminal: +\$158	5

Purchaser: .....

Price \$: .....

June 2024 Hereford BREEDPLAN																	
	CE DIR	CE DTRS	GL	BW	200	400	600	MCW	Milk	SS	DC	Cwt	EMA	Rib	RUMP	RBY%	IMF%
EBV	+2.5	+3.3	+1.4	+4.1	+46	+80	+114	+77	+26	+3.1	-3.5	+80	+7.4	+1.2	+1.2	+1.3	+2.1
Accuracy	45%	34%	66%	71%	69%	68%	69%	62%	55%	67%	38%	56%	48%	53%	57%	48%	56%
Percentile	60	50	90	55	4	3	3	30	4	15	45	2	2	35	50	25	4

Traits Observed: BWT,400WT,FAT,EMA,IMF,Genomics

Parent Verification: Sire: Verified, Dam: Not Verified

Notes: Bruno is a complete combination of genotype and phenotype. An attractive Querido, with the balanced performance to add value from paddock to plate. Bruno was a twin raised by the girls, so he has a gentle nature to go with his sound structure, good looks and high profit potential. He also hasn't reached his genetic potential, with a pretty ordinary start to life. Highly recommended. Balanced data = superior profit. Top 1% SSR index. Market/ system suitability: SM MSA F BB HB MP

## Lot 24 YALGOO QUINCY T328 (PP)

Ident: SODT328

Born: 13/10/2022

Eye Pigment: 100/100

ALLENDALE YACKA (AI) (P)  
 ALLENDALE ANZAC E114 (PP)  
 ALLENDALE DAWN B22 (AI) (ET) (P)  
 Sire: **WIRRUNA NIXON N168 (AI) (TW) (PP)**  
 ELITE 4110 E212 (AI) (PP)  
 WIRRUNA DIDO H45 (AI) (PP)  
 WIRRUNA DIDO F371 (ET) (P)  
 SHF WONDER M326 W18 ET (P)  
 NJW 73S W18 HOMEGROWN 8Y (IMP USA) (PP)  
 NJW P606 72N DAYDREAM 73S (P)  
 Dam: **YALGOO TIGRESS L077 (ET) (P)**  
 KARINA VALDRES (AI) (S)  
 YALGOO TIGRESS Z241 (H#)  
 YALGOO TIGRESS V110 (AI) (P)

\$ Index Values	Percentile
Southern Self Replacing: +\$163	30
Northern Self Replacing: +\$149	35
Southern Baldy Maternal: +\$148	50
Northern Baldy Terminal: +\$99	60

Purchaser: .....

Price \$: .....

June 2024 Hereford BREEDPLAN																	
	CE DIR	CE DTRS	GL	BW	200	400	600	MCW	Milk	SS	DC	Cwt	EMA	Rib	RUMP	RBY%	IMF%
EBV	-2.3	+3.6	-0.2	+6.2	+42	+66	+92	+72	+19	+5.0	-5.3	+58	+5.2	+2.0	+2.9	+0.0	+1.3
Accuracy	48%	40%	67%	73%	70%	69%	70%	63%	61%	77%	44%	59%	53%	56%	59%	53%	58%
Percentile	90	45	60	90	15	25	25	40	35	1	10	35	20	8	7	85	20

Traits Observed: BWT,200WT,400WT,SS,FAT,EMA,IMF,Genomics

Parent Verification: Sire: Verified, Dam: Not Verified

Notes: Stud sire from our donor dam. L077 is simply the highest capacity female of any breed on the farm. Homegrown 8Y, has been the ultimate female producer for NJW. Quincy is a moderate, wide based powerhouse. A bull to rein in maturity pattern, whilst adding serious capacity and thickness. Sound structure. Fertility - Top 10% SC DC. Market/ system suitability: SM MSA W F HGS BB



## Lot 25 YALGOO PANAMA T304 (PP)

**Ident:** SODT304 **Born:** 05/10/2022 **Eye Pigment:** 100/100

ALLEDALE YACKA (AI) (P)  
 ALLEDALE ANZAC E114 (PP)  
 ALLEDALE DAWN B22 (AI) (ET) (P)  
**Sire:** WIRRUNA NIXON N168 (AI) (TW) (PP)  
 ELITE 4110 E212 (AI) (PP)  
 WIRRUNA DIDO H45 (AI) (PP)  
 WIRRUNA DIDO F371 (ET) (P)

BOWMONT STORM C093 (H)  
 YALGOO BREAK OUT G075 (AI) (P)  
 YALGOO BLUSH A036 (P)  
**Dam:** YALGOO VANESSA M128 (P)  
 YALGOO ZODIAC G027 (AI) (P)  
 YALGOO VANESSA J198 (P)  
 YALGOO VANESSA G125 (P)

\$ Index Values	Percentile
Southern Self Replacing: +\$178	20
Northern Self Replacing: +\$162	25
Southern Baldy Maternal: +\$163	35
Northern Baldy Terminal: +\$113	45

**Purchaser:** .....

.....

**Price \$:** .....

June 2024 Hereford BREEDPLAN																	
	CE DIR	CE DTRS	GL	BW	200	400	600	MCW	Milk	SS	DC	Cwt	EMA	Rib	RUMP	RBY%	IMF%
<b>EBV</b>	-3.7	+1.1	-3.0	+5.5	+49	+78	+109	+89	+20	+4.1	-4.4	+73	+4.4	+1.1	+2.2	+0.6	+1.1
<b>Accuracy</b>	48%	41%	67%	74%	70%	69%	70%	65%	61%	69%	44%	59%	53%	56%	60%	54%	58%
<b>Percentile</b>	92	70	15	80	2	3	4	15	30	2	25	5	40	40	20	60	25

**Traits Observed:** BWT,200WT,400WT,FAT,EMA,IMF,Genomics **Parent Verification:** Sire: Verified, Dam: Not Verified

**Notes:** Soft skinned homozygous bull, that will garner some attention for his overall capacity and softness. Suited to heavy, grass finishing programs. High growth - Top 5%+ 200 400 600. Market / system suitability: MSA F EU HGS

## Lot 26 YALGOO TILT T212 (AI) (PP)

**Ident:** SODT212 **Born:** 19/09/2022 **Eye Pigment:** 100/100

GLENTREVOR WALLACE H427 (AI) (PP)  
 YALGOO PIONEER P007 (AI) (P)  
 YALGOO BUFFY M117 (AI) (ET) (P)  
**Sire:** YALGOO RAPPER R035 (PP)  
 CHURCHILL KICKSTART 501C (IMP USA) (AI) (ET) (P)  
 YALGOO CHIQUITA P001 (AI) (P)  
 YALGOO CHIQUITA M241 (P)

GLENTREVOR WALLACE H427 (AI) (PP)  
 YALGOO PHANTOM P030 (AI) (P)  
 YALGOO LIQUER M216 (P)  
**Dam:** YALGOO BLUSH R033 (P)  
 TOBRUK LENNOX (ET) (PP)  
 YALGOO BLUSH P247 (P)  
 YALGOO BLUSH L086 (P)

\$ Index Values	Percentile
Southern Self Replacing: +\$164	30
Northern Self Replacing: +\$149	35
Southern Baldy Maternal: +\$165	35
Northern Baldy Terminal: +\$113	45

**Purchaser:** .....

.....

**Price \$:** .....

June 2024 Hereford BREEDPLAN																	
	CE DIR	CE DTRS	GL	BW	200	400	600	MCW	Milk	SS	DC	Cwt	EMA	Rib	RUMP	RBY%	IMF%
<b>EBV</b>	+0.7	+4.0	+3.0	+4.7	+39	+68	+93	+67	+21	+2.6	-2.4	+63	+4.6	+1.5	+2.1	+0.8	+0.6
<b>Accuracy</b>	35%	26%	72%	70%	65%	64%	66%	57%	51%	76%	33%	52%	46%	50%	54%	47%	51%
<b>Percentile</b>	70	40	99	65	25	20	25	50	25	30	70	20	35	25	20	50	55

**Traits Observed:** GL,BWT,200WT,400WT,SS,FAT,EMA,IMF,Genomics **Parent Verification:** Sire: Verified, Dam: Verified

**Notes:** Slick skinned, attractive QLD bull, with some grunt and sire appeal. Balanced performance and maternal pedigree with a double shot of Wallace and Churchill Kickstart. Market/ system suitability: F EU HGS BB W

## Lot 27 YALGOO QUEANBEYAN T242 (AI) (PP)

**Ident:** SODT242 **Born:** 23/09/2022 **Eye Pigment:** 100/100

SCHU-LAR ON TARGET 22S (IMP USA) (ET) (P)  
 KCF BENNETT STRATEGY Z303 ET (P)  
 KCF MISS REVOLUTION X338 (ET) (P)  
**Sire:** TH MASTERPLAN 183F (IMP USA) (PP)  
 FTF PROSPECTOR 145Y (IMP USA) (P)  
 TH 512X 145Y DOMINETTE 57B (P)  
 TH 122 711 DOMINETTE 512X ET (P)

KJ HVH 33N REDEEM 485T ET (IMP USA) (P)  
 CHURCHILL STUD 3134A (IMP USA) (PP)  
 CHURCHILL LADY 002X ET (P)  
**Dam:** YALGOO BETTE N070 (AI) (P)  
 GRASSMERE SPARK 555 (IMP NZL) (PP)  
 YALGOO BETTE H152 (AI) (P)  
 YALGOO BETTE D174 (P)

\$ Index Values	Percentile
Southern Self Replacing: +\$193	9
Northern Self Replacing: +\$176	15
Southern Baldy Maternal: +\$181	25
Northern Baldy Terminal: +\$125	30

**Purchaser:** .....

.....

**Price \$:** .....

June 2024 Hereford BREEDPLAN																	
	CE DIR	CE DTRS	GL	BW	200	400	600	MCW	Milk	SS	DC	Cwt	EMA	Rib	RUMP	RBY%	IMF%
<b>EBV</b>	-0.8	+3.1	+1.9	+6.1	+44	+74	+100	+72	+17	+4.4	-4.2	+58	+7.2	+1.6	+1.0	+0.9	+2.2
<b>Accuracy</b>	47%	35%	76%	74%	70%	70%	70%	65%	60%	78%	36%	61%	56%	58%	59%	52%	60%
<b>Percentile</b>	80	50	94	85	7	7	15	40	55	2	30	35	3	20	55	40	3

**Traits Observed:** GL,BWT,200WT,400WT,SS,FAT,EMA,IMF,Genomics **Parent Verification:** Sire: Verified, Dam: Not Verified

**Notes:** I like this dark, bold muscle bull. T242 has sound structure, is wide based and has a soft skin. Rugged bull to improve growth and carcass traits. He should stamp his progeny with early puberty, a masculine look and terrific muscle shape. Growth - Top 10%+ 200 400 Early puberty - Top 5% SC, positive fats, early growth High carcass merit - Top 5%+ EMA and IMF. Market/ system suitability: MSA F HGS BB W

## Lot 28 YALGOO QUICK T204 (AI) (PP)

**Ident:** SODT204 **Born:** 18/09/2022 **Eye Pigment:** 100/100

SCHU-LAR ON TARGET 22S (IMP USA) (ET) (P)  
 KCF BENNETT STRATEGY Z303 ET (P)  
 KCF MISS REVOLUTION X338 (ET) (P)  
**Sire:** TH MASTERPLAN 183F (IMP USA) (PP)  
 FTF PROSPECTOR 145Y (IMP USA) (P)  
 TH 512X 145Y DOMINETTE 57B (P)  
 TH 122 71I DOMINETTE 512X ET (P)  
  
 TH 122 71I VICTOR 719T (IMP USA) (P)  
 YALGOO ZEALOT K082 (AI) (P)  
 YALGOO ZELDA E14 (P)  
**Dam:** YALGOO BELLE PRUNICE M242 (P)  
 YALGOO ZED F190 (P)  
 YALGOO BELLE PRUNICE K044 (P)  
 YALGOO BELLE PRUNICE G010 (AI) (P)

\$ Index Values	Percentile
Southern Self Replacing: +\$197	7
Northern Self Replacing: +\$174	15
Southern Baldy Maternal: +\$186	20
Northern Baldy Terminal: +\$135	20

**Purchaser:** .....

.....

**Price \$:** .....

June 2024 Hereford BREEDPLAN																	
	CE DIR	CE DTRS	GL	BW	200	400	600	MCW	Milk	SS	DC	Cwt	EMA	Rib	RUMP	RBY%	IMF%
EBV	-1.9	-1.4	-0.2	+7.1	+49	+86	+119	+99	+20	+5.0	-4.2	+69	+5.4	+0.4	-0.2	+1.5	+1.5
Accuracy	46%	33%	75%	74%	70%	69%	70%	64%	60%	77%	34%	60%	54%	57%	59%	52%	59%
Percentile	85	90	60	94	2	1	2	6	30	1	30	9	20	75	90	15	15

**Traits Observed:** GL,BWT,200WT,400WT,SS,FAT,EMA,IMF,Genomics **Parent Verification:** Sire: Verified, Dam: Not Verified

**Notes:** High growth Masterplan, from a sound cow. Outcross genetics. Suited to the heavy grass trade, with his high yield and growth, yet still top 15% for IMF. Top end growth - Top 5%+ 200 400 600. Market/ system suitability: F EU HGS

## Lot 29 YALGOO QUINCY U459 (AI) (ET) (S)

**Ident:** SODU459 **Born:** 18/04/2023 **Eye Pigment:** 100/100

MSU MF HUDSON 19H (P)  
 SHF YORK 19H Y02 (P)  
 LOEWEN MISS P20 10W (P)  
**Sire:** CHURCHILL BROADWAY 858F (IMP USA) (PP)  
 KCF BENNETT ENCORE Z311 (ET) (PP)  
 CHURCHILL LADY 640D (P)  
 CHURCHILL LADY 4164B (H#)  
  
 SHF WONDER M326 W18 ET (P)  
 NJW 73S W18 HOMEGROWN 8Y (IMP USA) (PP)  
 NJW P606 72N DAYDREAM 73S (P)  
**Dam:** YALGOO TIGRESS L077 (ET) (P)  
 KARINA VALDRES (AI) (S)  
 YALGOO TIGRESS Z241 (H#)  
 YALGOO TIGRESS V110 (AI) (P)

\$ Index Values	Percentile
Southern Self Replacing: +\$185	15
Northern Self Replacing: +\$166	20
Southern Baldy Maternal: +\$181	25
Northern Baldy Terminal: +\$130	25

**Purchaser:** .....

.....

**Price \$:** .....

June 2024 Hereford BREEDPLAN																	
	CE DIR	CE DTRS	GL	BW	200	400	600	MCW	Milk	SS	DC	Cwt	EMA	Rib	RUMP	RBY%	IMF%
EBV	+1.8	+1.4	-0.2	+4.4	+42	+71	+100	+75	+24	+5.0	-5.0	+64	+4.6	+0.9	+1.0	+0.9	+1.2
Accuracy	48%	39%	61%	65%	64%	64%	64%	59%	56%	63%	41%	56%	49%	53%	56%	47%	55%
Percentile	65	70	60	60	15	10	15	35	8	1	15	20	35	50	55	40	25

**Traits Observed:** **Parent Verification:** Sire: Verified, Dam: Not Verified

**Notes:** Is firming as a favourite sire prospect in the sale. From our powerhouse donor L077 by the rising star Churchill Broadway sire. Huge amount of potential in this outcross yearling ET son. Structure is right and his muscle pattern is expressive. He's fluid in his movement for such a densely made, wide based bull. Plenty of power in the pedigree. High libido bull, passing his serving ability test immediately at 14 mths of age. Market/ system suitability: SM MSA F HGS BB

## Lot 30 YALGOO NINJA U460 (AI) (ET) (PP)

**Ident:** SODU460 **Born:** 21/04/2023 **Eye Pigment:** 100/100

ALLENDALE WATERHOUSE D1 (PP)  
 DAYS ROBIN HOOD H38 (AI) (ET) (PP)  
 ALLENDALE FANCY U5 (AI) (P)  
**Sire:** HUNTER LAKES LANCELOT L103 (AI) (ET) (PP)  
 SOUTH BUKALONG WALLACE 2 (P)  
 HUNTER LAKES FANCY F7 (AI) (P)  
 ALLENDALE FANCY D24 (AI) (P)  
  
 SHF WONDER M326 W18 ET (P)  
 NJW 73S W18 HOMEGROWN 8Y (IMP USA) (PP)  
 NJW P606 72N DAYDREAM 73S (P)  
**Dam:** YALGOO TIGRESS L077 (ET) (P)  
 KARINA VALDRES (AI) (S)  
 YALGOO TIGRESS Z241 (H#)  
 YALGOO TIGRESS V110 (AI) (P)

\$ Index Values	Percentile
Southern Self Replacing: +\$157	35
Northern Self Replacing: +\$149	35
Southern Baldy Maternal: +\$171	30
Northern Baldy Terminal: +\$124	30

**Purchaser:** .....

.....

**Price \$:** .....

June 2024 Hereford BREEDPLAN																	
	CE DIR	CE DTRS	GL	BW	200	400	600	MCW	Milk	SS	DC	Cwt	EMA	Rib	RUMP	RBY%	IMF%
EBV	+4.9	+6.7	+1.3	+3.0	+33	+56	+82	+66	+26	+1.3	-2.6	+56	+6.0	+1.4	+2.7	+1.5	+0.4
Accuracy	50%	42%	68%	71%	70%	69%	70%	63%	62%	69%	40%	60%	53%	57%	60%	51%	59%
Percentile	40	15	90	35	55	55	45	55	4	85	65	40	10	25	9	15	65

**Traits Observed:** Genomics **Parent Verification:** Sire: Verified, Dam: Not Tested

**Notes:** Classy, soft, sound and round. Yearling prospect by the ever reliable Hunter Lakes Lancelot. Sound structure and milky females should be a feature from this homozygous polled ET bull. A short yearling, who also passed his serving ability test at a young age with flying colours, showing high libido. Market/ system suitability: SM F MP



## Lot 31 YALGOO RAFT T156 (AI) (PP)

Ident: SODT156 Born: 14/09/2022 Eye Pigment: 100/100

LIMEHILLS STAMPER 110429 (P)  
 LIMEHILLS STAMPER 140064 (P)  
 LIMEHILLS LEONORA 749 (P)  
 Sire: LIMEHILLS STARTER 160062 (IMP NZL) (PP)  
 OKAWA ELECTRA 1117 (P)  
 LIMEHILLS BEAUTY 140225 (P)  
 LIMEHILLS BEAUTY 110483 (P)

ALLENDALE ANZAC E114 (PP)  
 INJEMIRA ANZAC H006 (PP)  
 INJEMIRA MARINDA B028 (AI) (P)  
 Dam: YALGOO BLUSH P190 (AI) (ET) (P)  
 BENDULLA WINSTON (P)  
 YALGOO BLUSH A036 (P)  
 YALGOO BLUSH S8 (P)

\$ Index Values	Percentile
Southern Self Replacing: +\$172	25
Northern Self Replacing: +\$157	25
Southern Baldy Maternal: +\$165	35
Northern Baldy Terminal: +\$119	35

Purchaser: .....

Price \$: .....

June 2024 Hereford BREEDPLAN																	
	CE DIR	CE DTRS	GL	BW	200	400	600	MCW	Milk	SS	DC	Cwt	EMA	Rib	RUMP	RBY%	IMF%
EBV	-1.8	+2.6	-1.9	+5.1	+40	+66	+103	+92	+21	+0.9	-4.1	+76	+6.5	+2.6	+3.6	+0.1	+1.9
Accuracy	54%	48%	75%	72%	70%	70%	71%	66%	64%	70%	45%	61%	54%	58%	61%	54%	60%
Percentile	85	55	30	70	20	25	8	15	25	94	30	3	6	2	3	80	5

Traits Observed: GL,BWT,Genomics Parent Verification: Sire: Verified, Dam: Not Verified

Notes: The top phenotype bull in his pen. Very classy, eye catching with extra volume and dimension from hip to pin. He is not just fancy looking, Raft has a functional hard working dam, good structure and balanced performance. Have a good look at him. Good growth - Top 30%+ 200 400 600 Strong carcass - Top 10%+ EMA RIB RUMP IMF. Market/ system suitability: MSA F EU HGS BB W

## Lot 32 YALGOO SKIPPER T206 (AI) (PP)

Ident: SODT206 Born: 18/09/2022 Eye Pigment: 100/100

SCHU-LAR ON TARGET 22S (IMP USA) (ET) (P)  
 KCF BENNETT STRATEGY Z303 ET (P)  
 KCF MISS REVOLUTION X338 (ET) (P)  
 Sire: TH MASTERPLAN 183F (IMP USA) (PP)  
 FTF PROSPECTOR 145Y (IMP USA) (P)  
 TH 512X 145Y DOMINETTE 57B (P)  
 TH 122 71I DOMINETTE 512X ET (P)

OTAPAWA SPARK 3060 (IMP NZL) (AI) (ET) (P)  
 TOBRUK LENNOX (ET) (PP)  
 PINE HILL MARITANA A619 (AI) (P)  
 Dam: YALGOO BEAUTY Q162 (P)  
 YALGOO BREAK OUT G075 (AI) (P)  
 YALGOO BEAUTY L202 (P)  
 YALGOO BEAUTY G253 (P)

\$ Index Values	Percentile
Southern Self Replacing: +\$229	1
Northern Self Replacing: +\$209	2
Southern Baldy Maternal: +\$227	2
Northern Baldy Terminal: +\$170	2

Purchaser: .....

Price \$: .....

June 2024 Hereford BREEDPLAN																	
	CE DIR	CE DTRS	GL	BW	200	400	600	MCW	Milk	SS	DC	Cwt	EMA	Rib	RUMP	RBY%	IMF%
EBV	+1.4	+2.0	+2.1	+6.5	+53	+100	+131	+120	+18	+3.2	-4.0	+90	+7.4	+0.0	-0.5	+1.9	+2.0
Accuracy	47%	36%	75%	73%	70%	69%	70%	64%	59%	77%	36%	61%	55%	58%	60%	52%	60%
Percentile	65	60	95	90	1	1	1	1	45	15	35	1	2	85	92	6	4

Traits Observed: GL,BWT,200WT,400WT,SS,FAT,EMA,IMF,Genomics Parent Verification: Sire: Verified, Dam: Not Verified

Notes: Beast of a Masterplan, with outlier growth and muscle. Plenty of ticks in the income traits, yet Skipper still has positive calving ease and good structural scores. Top 1%+ 200 400 600 Great carcass - Top 5%+ EMA and IMF Serious profit - Top 1%+ SSR index. Market/ system suitability: MSA F EU HGS BB

## Lot 33 YALGOO RAPPER T314 (PP)

Ident: SODT314 Born: 08/10/2022 Eye Pigment: 100/100

KOANUI UNANIMOUS 0408 (P)  
 KOANUI TECHNO 3062 (IMP NZL) (PP)  
 KOANUI BLUSH 6455 (P)  
 Sire: YALGOO RENDER R118 (AI) (PP)  
 WIRRUNA JUSTIN J13 (AI) (PP)  
 YALGOO LIQUER M179 (AI) (P)  
 YALGOO K401 (AI) (P)

CHURCHILL RED BULL 200Z (P)  
 CHURCHILL KICKSTART 501C (IMP USA) (AI) (ET) (P)  
 HVH OKSANA 4L 33N (P)  
 Dam: YALGOO CHIQUITA P001 (AI) (P)  
 WIRRUNA ECHUCA E99 (AI) (P)  
 YALGOO CHIQUITA M241 (P)  
 YALGOO CHIQUITA J253 (P)

\$ Index Values	Percentile
Southern Self Replacing: +\$205	4
Northern Self Replacing: +\$194	5
Southern Baldy Maternal: +\$215	5
Northern Baldy Terminal: +\$150	8

Purchaser: .....

Price \$: .....

June 2024 Hereford BREEDPLAN																	
	CE DIR	CE DTRS	GL	BW	200	400	600	MCW	Milk	SS	DC	Cwt	EMA	Rib	RUMP	RBY%	IMF%
EBV	+7.0	+7.1	-2.8	+2.9	+38	+68	+93	+59	+25	+2.5	-4.1	+67	+5.8	+2.1	+2.4	+1.5	+0.9
Accuracy	42%	35%	63%	71%	66%	65%	66%	60%	55%	75%	39%	55%	49%	53%	56%	50%	54%
Percentile	25	9	15	35	30	20	25	65	6	35	30	15	15	7	15	15	35

Traits Observed: BWT,200WT,400WT,SS,FAT,EMA,IMF,Genomics Parent Verification: Sire: Verified, Dam: Not Verified

Notes: A balanced genotype gives market versatility and this is what you get with this thick, moderate and wide based Techno grandson. Very strong cow family with dam P1 being a standout, as well as her maternal sister Q116. The best balance of data in the sale with 14 traits being top 30% or better. High indexing Top 10%+ all indexes. Market/ system suitability: SM F BB HBH MP

## Lot 34 YALGOO TANK T073 (AI) (PP)

Ident: SODT073

Born: 27/08/2022

Eye Pigment: 090/100

NJW 73S M326 TRUST 100W ET (IMP USA) (ET) (P)  
 ELITE TRUST K215 (AI) (S)  
 ELITE RUTH 0219 D163 (AI) (P)  
 Sire: **GLENTREVOR TRUST N909 (AI) (PP)**  
 SOUTH BUKALONG WALLACE 2 (P)  
 GLENTREVOR SIRIKIT J504 (AI) (P)  
 GLENTREVOR SIRIKIT F252 (P)

\$ Index Values	Percentile
Southern Self Replacing: +\$173	25
Northern Self Replacing: +\$167	20
Southern Baldy Maternal: +\$195	15
Northern Baldy Terminal: +\$138	20

KOANUI TECHNO 3062 (IMP NZL) (PP)  
 YALGOO NAUTILUS P173 (AI) (PP)  
 YALGOO DONNA BELLA J082 (AI) (P)  
 Dam: **YALGOO PERSISTANCE R019 (P)**  
 YALGOO COUNT M105 (AI) (P)  
 YALGOO PERSISTANCE P239 (P)  
 YALGOO PERSISTANCE M227 (P)

Purchaser: .....  
 .....  
 Price \$: .....

June 2024 Hereford BREEDPLAN																	
	CE DIR	CE DTRS	GL	BW	200	400	600	MCW	Milk	SS	DC	Cwt	EMA	Rib	RUMP	RBY%	IMF%
EBV	+9.3	+8.6	-2.1	+0.7	+33	+55	+73	+38	+25	+2.9	-2.5	+55	+5.4	+1.4	+1.9	+1.2	+1.0
Accuracy	49%	40%	75%	73%	70%	69%	70%	64%	59%	78%	43%	59%	53%	57%	61%	54%	59%
Percentile	15	3	25	10	55	60	65	91	6	20	70	45	20	25	25	30	30

Traits Observed: GL,CE,BWT,200WT,400WT,SS,FAT,EMA,IMF,Genomics Parent Verification: Sire: Verified, Dam: Verified  
 Notes: WITHDRAWN

## Lot 35 YALGOO TOPAZ T055 (AI) (S)

Ident: SODT055

Born: 24/08/2022

Eye Pigment: 100/100

SOUTH BUKALONG WALLACE 2 (P)  
 GLENTREVOR WALLACE H427 (AI) (PP)  
 GLENTREVOR MARITANA F240 (P)  
 Sire: **YALGOO PIONEER P007 (AI) (P)**  
 NJW 73S M326 TRUST 100W ET (IMP USA) (ET) (P)  
 YALGOO BUFFY M117 (AI) (ET) (P)  
 YALGOO BUFFY D191 (P)

\$ Index Values	Percentile
Southern Self Replacing: +\$186	15
Northern Self Replacing: +\$176	15
Southern Baldy Maternal: +\$184	20
Northern Baldy Terminal: +\$126	30

KCF BENNETT REVOLUTION X51 (IMP USA) (P)  
 YALGOO MACE M039 (AI) (PP)  
 YALGOO BLUSH J102 (AI) (PP)  
 Dam: **YALGOO BLUSH R232 (P)**  
 INJEMIRA REDFORD AI J205 (AI) (P)  
 YALGOO BLUSH M220 (P)  
 YALGOO BLUSH J137 (P)

Purchaser: .....  
 .....  
 Price \$: .....

June 2024 Hereford BREEDPLAN																	
	CE DIR	CE DTRS	GL	BW	200	400	600	MCW	Milk	SS	DC	Cwt	EMA	Rib	RUMP	RBY%	IMF%
EBV	-0.1	+4.4	-0.2	+5.0	+42	+74	+100	+71	+18	+1.4	-1.9	+68	+6.4	+1.1	+1.8	+1.8	+0.8
Accuracy	46%	34%	74%	73%	68%	68%	69%	60%	55%	77%	38%	56%	50%	53%	57%	51%	54%
Percentile	75	35	60	70	15	7	15	45	45	85	80	15	6	40	30	8	40

Traits Observed: GL,CE,BWT,200WT,400WT,SS,FAT,EMA,IMF,Genomics Parent Verification: Sire: Verified, Dam: Verified  
 Notes: B- muscling, growth and strong maternal claims in this heifers first calf. Sire went to Simon Croft's high quality herd at Guyra. Semen was exported to Koanui in P7 and has been used successfully in NZ. Heavy yielding - Top 10% CWT 400 RBY EMA. Market/ system suitability: F EU HGS

## Lot 36 YALGOO QUIRK T164 (AI) (PP)

Ident: SODT164

Born: 15/09/2022

Eye Pigment: 100/100

MSU TCF REVOLUTION 4R (IMP USA) (PP)  
 KCF BENNETT REVOLUTION X51 (IMP USA) (P)  
 KCF MISS PROFICIENT U201 (P)  
 Sire: **WIRRUNA LEAP FORWARD L95 (ET) (PP)**  
 WIRRUNA COMMANDER C68 (AI) (PP)  
 WIRRUNA MIDGE F322 (P)  
 WIRRUNA MIDGE A51 (AI) (P)

\$ Index Values	Percentile
Southern Self Replacing: +\$153	40
Northern Self Replacing: +\$144	35
Southern Baldy Maternal: +\$156	40
Northern Baldy Terminal: +\$115	40

SOUTH BUKALONG WALLACE 2 (P)  
 GLENTREVOR WALLACE H427 (AI) (PP)  
 GLENTREVOR MARITANA F240 (P)  
 Dam: **YALGOO MELODY N033 (AI) (P)**  
 YALGOO ZED F190 (P)  
 YALGOO MELODY L080 (P)  
 YALGOO MELODY G132 (P)

Purchaser: .....  
 .....  
 Price \$: .....

June 2024 Hereford BREEDPLAN																	
	CE DIR	CE DTRS	GL	BW	200	400	600	MCW	Milk	SS	DC	Cwt	EMA	Rib	RUMP	RBY%	IMF%
EBV	+6.6	+2.5	-2.7	+2.0	+30	+53	+65	+42	+19	+3.5	-5.8	+43	+5.0	+2.0	+2.8	-0.6	+1.9
Accuracy	53%	45%	76%	74%	70%	70%	71%	66%	63%	72%	46%	61%	55%	58%	61%	55%	60%
Percentile	30	55	15	25	70	65	80	90	35	7	5	85	25	8	8	97	5

Traits Observed: GL,BWT,400WT,SS,FAT,EMA,IMF,Genomics Parent Verification: Sire: Verified, Dam: Not Verified

Notes: Prototype B- muscling, Yalgoo sale bull. His body dimension and volume suggests a little more weight in his phenotype than his EBV's suggest. Soggy lad, with roundness and fat cover. Looks to be that real efficient type, to produce low cost cattle. Versatile genotype, with calving ease and carcass merit. Market/ system suitability: SM MSA F BB HB MP



**Lot 37 YALGOO SCUFFLE T234 (P)**

**Ident:** SODT234 **Born:** 21/09/2022 **Eye Pigment:** 100/100

MSU TCF REVOLUTION 4R (IMP USA) (PP)  
 KCF BENNETT REVOLUTION X51 (IMP USA) (P)  
 KCF MISS PROFICIENT U201 (P)  
**Sire:** WIRRUNA LEAP FORWARD L95 (ET) (PP)  
 WIRRUNA COMMANDER C68 (AI) (PP)  
 WIRRUNA MIDGE F322 (P)  
 WIRRUNA MIDGE A51 (AI) (P)

KCF BENNETT ENCORE Z311 (ET) (PP)  
 NJW 79Z Z311 ENDURE 173D (IMP USA) (ET) (PP)  
 BW 91H 100W RITA 79Z (ET) (P)  
**Dam:** YALGOO BLUSH Q122 (AI) (P)  
 YALGOO BANDIT J079 (AI) (P)  
 YALGOO BLUSH L086 (P)  
 YALGOO BLUSH J335 (ET) (P)

\$ Index Values	Percentile
Southern Self Replacing: +\$187	15
Northern Self Replacing: +\$183	9
Southern Baldy Maternal: +\$188	20
Northern Baldy Terminal: +\$134	20

**Purchaser:** .....

**Price \$:** .....

June 2024 Hereford BREEDPLAN																	
	CE DIR	CE DTRS	GL	BW	200	400	600	MCW	Milk	SS	DC	Cwt	EMA	Rib	RUMP	RBY%	IMF%
<b>EBV</b>	+5.1	+4.4	-0.1	+2.7	+40	+62	+80	+51	+22	+1.5	-5.3	+59	+7.8	+2.6	+3.6	+0.9	+1.6
<b>Accuracy</b>	53%	44%	69%	73%	70%	71%	66%	63%	78%	45%	61%	55%	58%	62%	56%	60%	
<b>Percentile</b>	40	35	65	35	20	35	50	80	15	80	10	35	1	2	3	40	10

**Traits Observed:** BWT,200WT,400WT,SS,FAT,EMA,IMF,Genomics **Parent Verification:** Sire: Verified, Dam: Verified

**Notes:** An, A-grader late in the sale that wouldn't look out of place in a mob of stud heifers. Expect high quality, maternally efficient progeny. Brings plenty to the table with his balanced performance and attractive phenotype. Low birth with early growth. Good carcass merit - Top 10%+ EMA RIB RUMP IMF. Market/ system suitability: SM MSA F HB MP

**Lot 38 YALGOO TRADER T227 (AI) (PP)**

**Ident:** SODT227 **Born:** 20/09/2022 **Eye Pigment:** 100/100

SCHU-LAR ON TARGET 22S (IMP USA) (ET) (P)  
 KCF BENNETT ENCORE Z311 (ET) (PP)  
 KCF MISS REVOLUTION X338 (ET) (P)  
**Sire:** NJW 79Z Z311 ENDURE 173D (IMP USA) (ET) (PP)  
 NJW 73S M326 TRUST 100W ET (IMP USA) (ET) (P)  
 BW 91H 100W RITA 79Z (ET) (P)  
 REMITALL RITA 91H (P)

KCF BENNETT REVOLUTION X51 (IMP USA) (P)  
 YALGOO MAMBA N068 (AI) (PP)  
 YALGOO TIGRESS K162 (P)  
**Dam:** YALGOO ZELDA Q249 (P)  
 YALGOO BOULDER Y056 (S)  
 YALGOO ZELDA D051 (AI) (P)  
 YALGOO ZELDA R53 (AI) (P)

\$ Index Values	Percentile
Southern Self Replacing: +\$184	15
Northern Self Replacing: +\$173	15
Southern Baldy Maternal: +\$204	8
Northern Baldy Terminal: +\$144	15

**Purchaser:** .....

**Price \$:** .....

June 2024 Hereford BREEDPLAN																	
	CE DIR	CE DTRS	GL	BW	200	400	600	MCW	Milk	SS	DC	Cwt	EMA	Rib	RUMP	RBY%	IMF%
<b>EBV</b>	+10.0	+9.1	+1.8	+1.4	+39	+63	+75	+38	+29	+3.0	-4.3	+60	+7.7	+0.6	-0.2	+2.0	+0.7
<b>Accuracy</b>	51%	41%	75%	73%	70%	70%	70%	66%	63%	78%	42%	60%	56%	58%	62%	55%	60%
<b>Percentile</b>	8	2	93	20	25	30	65	91	1	20	30	30	2	65	90	5	45

**Traits Observed:** GL,BWT,200WT,400WT,SS,FAT,EMA,IMF,Genomics **Parent Verification:** Sire: Verified, Dam: Verified

**Notes:** One of 3 B muscle bulls in the sale. Typical attractive Endure look, calving ease and serious muscle. Always good to see the genetic (7.7 EMA) and phenotypic (B muscle score) muscling coupled. Top end carcass - Top 5%+ EMA RBY Strong calving ease - Top 10% CEDIR CEDRTS. Market/ system suitability: SM F HB MP

**Lot 39 YALGOO TAXI T048 (AI) (PP)**

**Ident:** SODT048 **Born:** 24/08/2022 **Eye Pigment:** 100/100

NJW 73S M326 TRUST 100W ET (IMP USA) (ET) (P)  
 ELITE TRUST K215 (AI) (S)  
 ELITE RUTH 0219 D163 (AI) (P)  
**Sire:** GLENTREVOR TRUST N909 (AI) (PP)  
 SOUTH BUKALONG WALLACE 2 (P)  
 GLENTREVOR SIRIKIT J504 (AI) (P)  
 GLENTREVOR SIRIKIT F252 (P)

YALGOO MACE M039 (AI) (PP)  
 YALGOO PICADOR P025 (PP)  
 YALGOO VANESSA M235 (P)  
**Dam:** YALGOO TIGRESS R143 (P)  
 CHURCHILL KICKSTART 501C (IMP USA) (AI) (ET) (P)  
 YALGOO TIGRESS N006 (AI) (P)  
 YALGOO TIGRESS L078 (ET) (P)

\$ Index Values	Percentile
Southern Self Replacing: +\$172	25
Northern Self Replacing: +\$168	20
Southern Baldy Maternal: +\$201	10
Northern Baldy Terminal: +\$147	10

**Purchaser:** .....

**Price \$:** .....

June 2024 Hereford BREEDPLAN																	
	CE DIR	CE DTRS	GL	BW	200	400	600	MCW	Milk	SS	DC	Cwt	EMA	Rib	RUMP	RBY%	IMF%
<b>EBV</b>	+11.5	+9.1	-3.1	+0.7	+35	+58	+75	+47	+23	+3.4	-2.7	+57	+5.4	+1.4	+1.7	+1.2	+0.8
<b>Accuracy</b>	48%	39%	75%	73%	69%	69%	70%	64%	59%	78%	42%	59%	53%	56%	60%	54%	59%
<b>Percentile</b>	3	2	15	10	45	45	65	85	15	8	65	40	20	25	35	30	40

**Traits Observed:** GL,CE,BWT,200WT,400WT,SS,FAT,EMA,IMF,Genomics **Parent Verification:** Sire: Verified, Dam: Verified

**Notes:** Attractive, sound heifer bull from a heifer. More visual muscle than our average N909 progeny. Sleep easy calving - Top 15% CEDIR CEDRT GL BW. Market/ system suitability: SM F HB

## Lot 40 YALGOO REMITTANCE T292 (PP)

**Ident:** SODT292 **Born:** 03/10/2022 **Eye Pigment:** 095/100

ALLENDALE ANZAC E114 (PP)  
 WIRRUNA MATTY M288 (AI) (ET) (PP)  
 WIRRUNA CIRCLE H13 (AI) (PP)  
**Sire:** YALGOO QUOTA Q006 (AI) (PP)  
 CHURCHILL KICKSTART 501C (IMP USA) (AI) (ET) (P)  
 YALGOO TIGRESS N030 (AI) (P)  
 YALGOO TIGRESS Z241 (H#)

BOWMONT STORM C093 (H)  
 YALGOO BREAK OUT G075 (AI) (P)  
 YALGOO BLUSH A036 (P)  
**Dam:** YALGOO SHANGRI LA N268 (P)  
 MSU XEROX 20X (IMP USA) (P)  
 YALGOO SHANGRI LA J355 (ET) (P)  
 YALGOO SHANGRI LA A151 (P)

\$ Index Values	Percentile
Southern Self Replacing: +\$176	20
Northern Self Replacing: +\$161	25
Southern Baldy Maternal: +\$179	25
Northern Baldy Terminal: +\$131	25

**Purchaser:** .....

.....

**Price \$:** .....

June 2024 Hereford BREEDPLAN																	
	CE DIR	CE DTRS	GL	BW	200	400	600	MCW	Milk	SS	DC	Cwt	EMA	Rib	RUMP	RBY%	IMF%
EBV	+0.5	+2.0	-5.0	+4.7	+42	+73	+102	+81	+18	+3.1	-0.9	+68	+6.0	-0.2	-0.3	+2.1	+1.2
Accuracy	40%	34%	59%	71%	66%	65%	66%	60%	54%	76%	38%	55%	49%	52%	56%	49%	53%
Percentile	75	60	4	65	15	8	9	25	45	15	93	15	10	90	90	4	25

**Traits Observed:** BWT,200WT,400WT,SS,FAT,EMA,IMF,Genomics **Parent Verification:** Sire: Verified, Dam: Not Verified

**Notes:** A bull that paints a picture of our carcass journey. B muscling, sound and balanced in his data. His dam is moderate, thick, good uddered and consistent. A good, rugged burger. Strong growth - Top 10%+ 400 600 Extra yield Top 10%+ EMA RBY. Market/ system suitability: F EU HGS BB

## Lot 41 YALGOO SESSION T330 (PP)

**Ident:** SODT330 **Born:** 14/10/2022 **Eye Pigment:** 100/100

ALLENDALE YACKA (AI) (P)  
 ALLENDALE ANZAC E114 (PP)  
 ALLENDALE DAWN B22 (AI) (ET) (P)  
**Sire:** WIRRUNA NIXON N168 (AI) (TW) (PP)  
 ELITE 4110 E212 (AI) (PP)  
 WIRRUNA DIDO H45 (AI) (PP)  
 WIRRUNA DIDO F371 (ET) (P)

SHF WONDER M326 W18 ET (P)  
 NJW 73S W18 HOMETOWN 10Y (IMP USA) (P)  
 NJW P606 72N DAYDREAM 73S (P)  
**Dam:** YALGOO PRINCESS P063 (AI) (P)  
 YALGOO BOULDER Z250 (P)  
 YALGOO PRINCESS F167 (AI) (P)  
 KESWICK PRINCESS B090 (P)

\$ Index Values	Percentile
Southern Self Replacing: +\$175	20
Northern Self Replacing: +\$155	30
Southern Baldy Maternal: +\$170	30
Northern Baldy Terminal: +\$124	30

**Purchaser:** .....

.....

**Price \$:** .....

June 2024 Hereford BREEDPLAN																	
	CE DIR	CE DTRS	GL	BW	200	400	600	MCW	Milk	SS	DC	Cwt	EMA	Rib	RUMP	RBY%	IMF%
EBV	-1.2	+3.9	-0.3	+5.2	+41	+79	+108	+100	+17	+4.2	-3.4	+69	+5.0	+0.4	+0.3	+0.4	+1.8
Accuracy	48%	41%	68%	73%	70%	69%	70%	65%	61%	77%	45%	59%	53%	57%	60%	54%	59%
Percentile	85	40	60	75	15	3	5	5	55	2	50	9	25	75	80	70	7

**Traits Observed:** BWT,200WT,400WT,SS,FAT,EMA,IMF,Genomics **Parent Verification:** Sire: Verified, Dam: Not Verified

**Notes:** Session has the body dimension of a sherman tank. Full brother was a phenotypic stand out last year. Got his father's maturity pattern, capacity, nuts and carcass (B- muscling). Sire Nixon is still as good as any for type, visual muscle, body capacity and IMF combinations. High growth - Top 5%+ Growth Nice carcass quality - Top 10%+ IMF. Market/ system suitability: F HGS EU BB W

## Lot 42 YALGOO TOM T324 (PP)

**Ident:** SODT324 **Born:** 11/10/2022 **Eye Pigment:** 100/100

KCF BENNETT ENCORE Z311 (ET) (PP)  
 NJW 79Z Z311 ENDURE 173D (IMP USA) (ET) (PP)  
 BW 91H 100W RITA 79Z (ET) (P)  
**Sire:** YALGOO QUINCY R196 (AI) (PP)  
 NJW 73S W18 HMEGROWN 8Y (IMP USA) (PP)  
 YALGOO TIGRESS L077 (ET) (P)  
 YALGOO TIGRESS Z241 (H#)

MATARIKI HOLY - SMOKE (IMP NZL) (P)  
 MATARIKI 100380 (IMP NZL) (P)  
 MATARIKI BRACELET 050223 (P)  
**Dam:** YALGOO BETTE P169 (AI) (ET) (P)  
 NJW 73S M326 TRUST 100W ET (IMP USA) (ET) (P)  
 YALGOO BETTE J209 (AI) (PP)  
 YALGOO BETTE D240 (ET) (P)

\$ Index Values	Percentile
Southern Self Replacing: +\$202	5
Northern Self Replacing: +\$188	7
Southern Baldy Maternal: +\$183	20
Northern Baldy Terminal: +\$115	40

**Purchaser:** .....

.....

**Price \$:** .....

June 2024 Hereford BREEDPLAN																	
	CE DIR	CE DTRS	GL	BW	200	400	600	MCW	Milk	SS	DC	Cwt	EMA	Rib	RUMP	RBY%	IMF%
EBV	-2.5	+3.8	+0.4	+6.4	+46	+69	+102	+60	+23	+2.5	-5.4	+67	+7.2	+3.0	+3.9	+1.0	+1.0
Accuracy	41%	35%	62%	71%	66%	65%	66%	59%	55%	64%	38%	54%	49%	53%	57%	50%	54%
Percentile	90	40	75	90	4	15	9	65	15	35	9	15	3	1	2	35	30

**Traits Observed:** BWT,200WT,400WT,FAT,EMA,IMF,Genomics **Parent Verification:** Sire: Verified, Dam: Verified

**Notes:** Really attractive, mobile bull with excellent structure that reflects the depth of the offering. We strive to have a no holes offering and I believe many of these late bulls are as strong as the starters. Outcross sire with high growth - Top 10%+ 200 600 and interesting carcass credentials Top 5%+ EMA RIB RUMP. Market/ system suitability: MSA F EU HGS BB



**Lot 43 YALGOO RAMP T262 (PP)**

Ident: SODT262 Born: 27/09/2022 Eye Pigment: 100/100

KOANUI UNANIMOUS 0408 (P)  
 KOANUI TECHNO 3062 (IMP NZL) (PP)  
 KOANUI BLUSH 6455 (P)  
 Sire: **YALGOO RENDER R118 (AI) (PP)**  
 WIRRUNA JUSTIN J13 (AI) (PP)  
 YALGOO LIQUER M179 (AI) (P)  
 YALGOO K401 (AI) (P)

SOUTH BUKALONG WALLACE 2 (P)  
 WIRRUNA ECHUCA E99 (AI) (P)  
 WIRRUNA GOLDEN VANITY C32 (AI) (P)  
 Dam: **YALGOO CHIQUITA M241 (P)**  
 YALGOO ZED F190 (P)  
 YALGOO CHIQUITA J253 (P)  
 YALGOO CHIQUITA D036 (P)

\$ Index Values	Percentile
Southern Self Replacing: +\$183	15
Northern Self Replacing: +\$165	20
Southern Baldy Maternal: +\$174	25
Northern Baldy Terminal: +\$115	40

Purchaser: .....  
 .....  
 Price \$: .....

June 2024 Hereford BREEDPLAN																	
	CE DIR	CE DTRS	GL	BW	200	400	600	MCW	Milk	SS	DC	Cwt	EMA	Rib	RUMP	RYBY%	IMF%
EBV	-0.4	+4.6	-2.6	+6.9	+46	+69	+94	+56	+26	+3.4	-4.8	+56	+4.5	+2.2	+3.1	+0.4	+1.5
Accuracy	44%	39%	62%	71%	66%	65%	66%	60%	57%	75%	42%	55%	50%	53%	57%	51%	54%
Percentile	80	35	20	93	4	15	20	70	4	8	20	40	35	5	5	70	15

Traits Observed: BWT,200WT,400WT,SS,FAT,EMA,IMF,Genomics Parent Verification: Sire: Verified, Dam: Not Verified

Notes: B- muscling, sound structure and a grand old dam are features in the bookend bull. Appreciate the maternal value with M241, M179 and Echuca in the pedigree. Market/ system suitability: MSA F EU HGS W BB



**Power Cow – L077 Dam of Lots 24,29 and 30**

# CHURCHILL SMOKEY

## Cutting edge outcross Genetics



Churchill Smokey was the 'must have' combination of arguably the breed's two most dominant individuals in the US.

← SMOKEY IS THE BEST OF THESE TWO INDIVIDUALS →

Data wise Smokey is an outlier:

TRAIT	CE	BW	WW	COW FERT	MG	UDDER	TEAT	REA	MARB	BMI	BII
US RANK	4%	4%	1%	1%	1%	1%	1%	2%	3%	1%	1%

Along with his performance data, physically the bull has exceptional depth of rib, he's long, wide and expressive in his pattern. His running gear is sound with a clean sheath and large scrotum. If you want elite numbers with an elite look, get in on the ground floor of this Smokey!



### DAM

BR Validated B413 is universally admired by cattleman of all breeds for her power and function. Her total performance data and phenotype have allowed her to work well with most sires. She ranks top 1% for Marbling, EMA and all US indexes.

Recent progeny from BR Validated B413:

- \$112 259 AUD Churchill Kingdom
- \$97 290 AUD Churchill Red Thunder
- \$68 852 AUD Churchill Red Cloud
- 17 sons averaged \$31 432 AUD @ 2024 Churchill Bull Sale
- \$254 453 AUD Churchill Lady 219K
- Churchill Smokey: ½ Share @ \$145 936 AUD



### SIRE

RST Final Print is unmatched in the US for his combination of low birth (Top 4%) and high growth (Top 1%). He is that rare combination of great data, phenotype and equally at home with cows or heifers. Sons and daughters have topped sales across the US.



**6<sup>RD</sup>3 YALGOO BULL SALE**  
MONDAY 12 AUGUST 2024

Jock 0497 762 977  
jock@yalgoogenetics.com.au  
yalgoogenetics.com.au



PEDIGREE LINK



VIDEO LINK

ONLY SEMEN IN  
2024 SELLS IN THE  
63RD YALGOO BULL  
SALE IN AUGUST



**Lot 44 CHURCHILL SMOKEY 3128L (P) (IMP USA) – Semen Lot: 20x Straws**

Ident: Australian Registration Pending

Born: 25/01/2023

R LEADER 6964 (6964) P43500058

BOYD 31Z BLUEPRINT 6153 (6153) P43764491

NJW 91H 100W RITA 31Z ET (91H31Z) P43312368

Sire: **RST FINAL PRINT 0016 (0016) P44178105**

EFBEEF TFL U208 TESTED X651 ET (PEFX651) P43091736

RST MS X651 TESTED 8032 (8032) P43954174

RST MS 0124 TIMESAWASTIN 6094 (6094) 43716094

Purchaser: .....

EFBEEF TFL U208 TESTED X651 ET (PEFX651) P43091736

EFBEEF BR VALIDATED B413 (PEFB413) P43558667

EFBEEF 4R THYRA Y865 (PEFY865) P43187517

Dam: **BR VALIDATED B413 6035 7098 (7098) P43857421**

Price \$: .....

KCF BENNETT REVOLUTION Y428 (Y428) P43251111

BR BENNETT 4R Y428 2101 6035 (6035) P43631993

BR BENNETT OF 4070 2101 (2101) P43325022

EPDs as of 17 June 2024

	CE (%)	BW (lb)	WW (lb)	YW (lb)	DMI (lbs)	SC (cm)	SCF (%)	MM (lb)	MG (lb)	MCE (%)	MCW (lb)	UDDR (%)	TEAT (%)	CW (lb)	FAT (in)	REA (sq.in)	MARB (deg)
EPD	12.1	-0.8	77	115	0.6	1.3	27.6	41	80	6.7	69	1.50	1.60	90	0.032	0.94	0.50
Accuracy	.36	.49	.45	.45	.15	.39	.32	.25	-	.33	.33	.42	.43	.27	.32	.27	.29
Percentile	4 %	4 %	1 %	5 %	84 %	20 %	1 %	1 %	1 %	7 %	13 %	2 %	1 %	5 %	61 %	2 %	3 %

Traits Observed: FAT, REA, IMF, Genomics

Notes: 20 x straws in this next generation, total performance sire. Only Churchill Smokey semen to be offered in 2024. Churchill sold a half share in Smokey for \$145 000 AUD as a yearling to leading US and Canadian studs. See feature semen lot page for information. Semen estimated to arrive in Australia early August.

**Lot 45 CHURCHILL SMOKEY 3128L (P) (IMP USA) – Semen Lot: 20x Straws**

Notes: 20 x straws in this next generation, total performance sire. Only Churchill Smokey semen to be offered in 2024. Churchill sold a half share in Smokey for \$145 000 AUD as a yearling to leading US and Canadian studs. See feature semen lot page for information. Semen estimated to arrive in Australia early August.

Purchaser: ..... Price \$: .....





**Ivybank Poll Hereford Stud was founded in 1975. Carcase and doing ability has always been at the forefront of our breeding The drought has really worked out the cattle that survive in our climate.**

**All bulls are 7 in 1 tested, free of pestviris, Semen tested and have had no hoof trimming. The bulls in this draft were weaned early and put on oats when they were very light. There condition now is a testament of their doing ability They have never been fed any grain.**

## Lot 46 IVY BANK TADDY T025 (P)

Ident: AHGT025

Born: 22/09/2022

Vendor: Ivybank Partnership

ALLENDALE ANZAC E114 (PP)  
 INJEMIRA ANZAC K220 (AI) (PP)  
 INJEMIRA PLUM E212 (P)  
 Sire: RAVENSDALE HOTWIRE Q131 (PP)  
 MATARIKI HOLY - SMOKE (IMP NZL) (P)  
 RAVENSDALE HARMONY N231 (AI) (ET) (PP)  
 MOUNT DIFFICULT HARMONY H11 (AI) (P)  
 DEBARRY OLYMPUS A8 (S)  
 SUGARLOAF HARRISON H123 (AI) (PP)  
 MT RAVEN MARINDA D321 (P)  
 Dam: IVY BANK CHERRY N034 (P)  
 ALLENDALE YEMEN E39 (P)  
 IVY BANK CHERRY J12 (P)  
 IVY BANK CHERRY E10 (P)

\$ Index Values	Percentile
Southern Self Replacing: +\$117	75
Northern Self Replacing: +\$108	70
Southern Baldy Maternal: +\$114	80
Northern Baldy Terminal: +\$81	80

Purchaser: .....  
 .....  
 Price \$: .....

June 2024 Hereford BREEDPLAN																	
	CE DIR	CE DTRS	GL	BW	200	400	600	MCW	Milk	SS	DC	Cwt	EMA	Rib	RUMP	RBY%	IMF%
EBV	-0.6	+0.7	-1.5	+3.7	+32	+48	+69	+55	+13	+2.7	-2.0	+46	+4.4	+0.4	+0.3	+1.4	+0.4
Accuracy	38%	31%	48%	68%	62%	55%	56%	49%	47%	54%	30%	45%	39%	44%	46%	39%	44%
Percentile	80	75	35	50	60	80	75	70	85	30	80	75	40	75	80	20	65

Traits Observed: BWT,200WT Parent Verification: Sire: Not Tested, Dam: Not Tested

Notes: A low birth weight bull showing plenty of thickness with a great sire outlook

## Lot 47 IVY BANK THOMAS T020 (P)

Ident: AHGT020

Born: 16/09/2022

Vendor: Ivybank Partnership

ALLENDALE ANZAC E114 (PP)  
 INJEMIRA ANZAC K220 (AI) (PP)  
 INJEMIRA PLUM E212 (P)  
 Sire: RAVENSDALE HOTWIRE Q131 (PP)  
 MATARIKI HOLY - SMOKE (IMP NZL) (P)  
 RAVENSDALE HARMONY N231 (AI) (ET) (PP)  
 MOUNT DIFFICULT HARMONY H11 (AI) (P)  
 NJW 73S M326 TRUST 100W ET (IMP USA) (ET) (P)  
 YALGOO JET J157 (AI) (P)  
 YALGOO DONNA BELLA D040 (AI) (P)  
 Dam: IVY BANK MAGIC Q028 (P)  
 JMS VICTOR 671 967 (IMP USA) (P)  
 IVY BANK MAGIC M105 (AI) (ET) (P)  
 IVY BANK MAGIC J68 (AI) (ET) (P)

\$ Index Values	Percentile
Southern Self Replacing: +\$158	35
Northern Self Replacing: +\$150	30
Southern Baldy Maternal: +\$154	45
Northern Baldy Terminal: +\$107	50

Purchaser: .....  
 .....  
 Price \$: .....

June 2024 Hereford BREEDPLAN																	
	CE DIR	CE DTRS	GL	BW	200	400	600	MCW	Milk	SS	DC	Cwt	EMA	Rib	RUMP	RBY%	IMF%
EBV	+1.5	+3.3	-1.6	+4.0	+37	+55	+76	+50	+16	+3.0	-3.4	+53	+5.2	+1.1	+1.2	+1.2	+1.4
Accuracy	37%	31%	50%	68%	61%	55%	56%	49%	46%	54%	31%	47%	42%	46%	48%	39%	46%
Percentile	65	50	35	55	35	60	60	80	60	20	50	50	20	40	50	30	15

Traits Observed: BWT,200WT Parent Verification: Sire: Not Tested, Dam: Not Tested

Notes: A bull that has a good balance of figures. A dark Hotwire son that ticks a lot of boxes



**Lot 48 IVY BANK TRICKY T008 (AI) (P)**

Ident: AHGT008 Born: 09/09/2022 Vendor: Ivybank Partnership

KCF BENNETT REVOLUTION X51 (IMP USA) (P)  
 WIRRUNA LEAP FORWARD L95 (ET) (PP)  
 WIRRUNA MIDGE F322 (P)  
 Sire: **FLAGSTAFF KLINGON P6 (IMP NZL) (P)**  
 WIRRUNA FLETCHER F214 (P)  
 FLAGSTAFF MOONBEAM K10 (P)  
 FLAGSTAFF DONS MOONBEAM Y114 (P)

\$ Index Values	Percentile
Southern Self Replacing: +\$175	20
Northern Self Replacing: +\$166	20
Southern Baldy Maternal: +\$183	20
Northern Baldy Terminal: +\$132	25

NJW 73S M326 TRUST 100W ET (IMP USA) (ET) (P)  
 YALGOO JET J157 (AI) (P)  
 YALGOO DONNA BELLA D040 (AI) (P)  
 Dam: **IVY BANK UNIQUE Q007 (P)**  
 ALLENDALE YEMEN E39 (P)  
 IVY BANK UNIQUE L65 (P)  
 IVY BANK UNIQUE J63 (AI) (ET) (H#)

Purchaser: .....

Price \$: .....

June 2024 Hereford BREEDPLAN																	
	CE DIR	CE DTRS	GL	BW	200	400	600	MCW	Milk	SS	DC	Cwt	EMA	Rib	RUMP	RBY%	IMF%
EBV	+7.5	+7.8	-2.7	+3.1	+36	+58	+75	+60	+18	+2.5	-5.3	+53	+5.3	+0.5	-0.1	+1.6	+1.3
Accuracy	45%	37%	59%	71%	66%	61%	62%	55%	51%	60%	35%	53%	47%	50%	53%	45%	52%
Percentile	25	5	15	40	40	45	65	65	45	35	10	50	20	70	85	15	20

Traits Observed: BWT,200WT Parent Verification: Sire: Not Tested, Dam: Not Tested

Notes: Another heifer bull with stacks of muscle by the NZ bull. Plenty of Natural thickness.

**Lot 49 IVY BANK TRAMP T029 (P)**

Ident: AHGT029 Born: 28/09/2022 Vendor: Ivybank Partnership

ALLENDALE ANZAC E114 (PP)  
 INJEMIRA ANZAC K220 (AI) (PP)  
 INJEMIRA PLUM E212 (P)  
 Sire: **RAVENSDALE HOTWIRE Q131 (PP)**  
 MATARIKI HOLY - SMOKE (IMP NZL) (P)  
 RAVENSDALE HARMONY N231 (AI) (ET) (PP)  
 MOUNT DIFFICULT HARMONY H11 (AI) (P)

\$ Index Values	Percentile
Southern Self Replacing: +\$133	60
Northern Self Replacing: +\$123	55
Southern Baldy Maternal: +\$124	70
Northern Baldy Terminal: +\$86	75

DEBARRY OLYMPUS A8 (S)  
 SUGARLOAF HARRISON H123 (AI) (PP)  
 MT RAVEN MARINDA D321 (P)  
 Dam: **IVY BANK ECLIPSE L22 (P)**  
 BINBARRA WARBOYS (AI) (S)  
 IVY BANK ECLIPSE C30 (P)  
 IVY BANK ECLIPSE V33 (P)

Purchaser: .....

Price \$: .....

June 2024 Hereford BREEDPLAN																	
	CE DIR	CE DTRS	GL	BW	200	400	600	MCW	Milk	SS	DC	Cwt	EMA	Rib	RUMP	RBY%	IMF%
EBV	-2.1	-0.4	-1.8	+4.5	+35	+54	+78	+61	+13	+2.6	-2.7	+52	+5.2	+1.0	+1.2	+1.1	+0.9
Accuracy	38%	31%	47%	69%	62%	57%	57%	49%	50%	53%	29%	46%	40%	45%	48%	40%	45%
Percentile	90	85	30	60	45	60	55	60	85	30	65	55	20	45	50	35	35

Traits Observed: BWT,200WT Parent Verification: Sire: Not Tested, Dam: Not Tested

Notes: Another Hotwire son that is dark and thick with plenty of doing ability. Will breed either earlier maturing calves or cattle that will feed on.

**Lot 50 IVY BANK TREV T045 (P)**

Ident: AHGT045 Born: 30/10/2022 Vendor: Ivybank Partnership

ALLENDALE ANZAC E114 (PP)  
 INJEMIRA ANZAC K220 (AI) (PP)  
 INJEMIRA PLUM E212 (P)  
 Sire: **RAVENSDALE HOTWIRE Q131 (PP)**  
 MATARIKI HOLY - SMOKE (IMP NZL) (P)  
 RAVENSDALE HARMONY N231 (AI) (ET) (PP)  
 MOUNT DIFFICULT HARMONY H11 (AI) (P)

\$ Index Values	Percentile
Southern Self Replacing: +\$119	75
Northern Self Replacing: +\$109	70
Southern Baldy Maternal: +\$114	80
Northern Baldy Terminal: +\$83	80

KIDMAN BLIGH D99 (P)  
 KANIMBLA FULL BOTTLE H117 (PP)  
 KANIMBLA MARITANA B06 (AI) (P)  
 Dam: **IVY BANK MINERVA N013 (P)**  
 YALGOO BRUISER E106 (AI) (P)  
 IVY BANK MINERVA K42 (P)  
 IVY BANK MINERVA B48 (P)

Purchaser: .....

Price \$: .....

June 2024 Hereford BREEDPLAN																	
	CE DIR	CE DTRS	GL	BW	200	400	600	MCW	Milk	SS	DC	Cwt	EMA	Rib	RUMP	RBY%	IMF%
EBV	-0.9	-0.2	-1.3	+4.8	+34	+51	+71	+60	+13	+2.0	-2.5	+46	+4.8	+0.5	+0.4	+1.3	+0.7
Accuracy	36%	30%	48%	59%	56%	53%	54%	48%	47%	52%	29%	45%	38%	42%	44%	37%	42%
Percentile	80	85	40	65	50	70	70	65	85	60	70	75	30	70	75	25	45

Traits Observed: BWT,200WT Parent Verification: Sire: Not Tested, Dam: Not Tested

Notes: Out of a Full Bottle cow with his extra body. This bull will breed calves for all markets.



## Lot 51 IVY BANK T-BONE T026 (P)

Ident: AHGT026

Born: 22/09/2022

Vendor: Ivybank Partnership

ALLENDALE ANZAC E114 (PP)  
 INJEMIRA ANZAC K220 (AI) (PP)  
 INJEMIRA PLUM E212 (P)  
 Sire: **RAVENSDALE HOTWIRE Q131 (PP)**  
 MATARIKI HOLY - SMOKE (IMP NZL) (P)  
 RAVENSDALE HARMONY N231 (AI) (ET) (PP)  
 MOUNT DIFFICULT HARMONY H11 (AI) (P)  
  
 WIRRUNA ABERCORN (AI) (P)  
 ALLENDALE YEMEN E39 (P)  
 ALLENDALE FANCY A158 (AI) (ET) (S)  
 Dam: **IVY BANK MAGIC L09 (P)**  
 YALGOO BOOSTER B045 (AI) (P)  
 IVY BANK MAGIC F18 ET (AI) (ET) (P)  
 IVY BANK MAGIC Z09 (P)

\$ Index Values	Percentile
Southern Self Replacing: +\$132	60
Northern Self Replacing: +\$126	55
Southern Baldy Maternal: +\$129	65
Northern Baldy Terminal: +\$89	75

Purchaser: .....

Price \$: .....

June 2024 Hereford BREEDPLAN																	
	CE DIR	CE DTRS	GL	BW	200	400	600	MCW	Milk	SS	DC	Cwt	EMA	Rib	RUMP	RBY%	IMF%
EBV	+1.2	+2.0	-1.5	+3.3	+31	+46	+66	+46	+15	+2.5	-3.0	+47	+5.2	+0.5	+0.5	+1.8	+0.4
Accuracy	41%	35%	49%	69%	63%	56%	57%	50%	50%	55%	32%	47%	41%	45%	47%	40%	46%
Percentile	70	60	35	40	65	85	80	85	70	35	60	70	20	70	75	8	65

Traits Observed: BWT,200WT Parent Verification: Sire: Not Tested, Dam: Not Tested

Notes: Another heifer bull by Hotwire, out of a cow that produces something special each year. Extra muscle and growth

## Lot 52 IVY BANK TUFF T035 (P)

Ident: AHGT035

Born: 08/10/2022

Vendor: Ivybank Partnership

ALLENDALE ANZAC E114 (PP)  
 INJEMIRA ANZAC K220 (AI) (PP)  
 INJEMIRA PLUM E212 (P)  
 Sire: **RAVENSDALE HOTWIRE Q131 (PP)**  
 MATARIKI HOLY - SMOKE (IMP NZL) (P)  
 RAVENSDALE HARMONY N231 (AI) (ET) (PP)  
 MOUNT DIFFICULT HARMONY H11 (AI) (P)  
  
 WIRRUNA ABERCORN (AI) (P)  
 ALLENDALE YEMEN E39 (P)  
 ALLENDALE FANCY A158 (AI) (ET) (S)  
 Dam: **IVY BANK MINERVA J31 (P)**  
 YARAWA SOUTH COOPER C114 (AI) (P)  
 IVY BANK MINERVA G30 (P)  
 IVY BANK MINERVA A32 (P)

\$ Index Values	Percentile
Southern Self Replacing: +\$118	75
Northern Self Replacing: +\$113	65
Southern Baldy Maternal: +\$108	85
Northern Baldy Terminal: +\$76	85

Purchaser: .....

Price \$: .....

June 2024 Hereford BREEDPLAN																	
	CE DIR	CE DTRS	GL	BW	200	400	600	MCW	Milk	SS	DC	Cwt	EMA	Rib	RUMP	RBY%	IMF%
EBV	-2.4	+0.4	-2.1	+4.3	+33	+50	+70	+61	+9	+2.3	-2.2	+48	+5.3	+0.3	+0.3	+1.8	+0.3
Accuracy	40%	34%	50%	69%	63%	57%	59%	53%	51%	56%	32%	49%	42%	47%	49%	42%	47%
Percentile	90	80	25	60	55	75	75	60	96	45	75	70	20	75	80	8	70

Traits Observed: BWT,200WT Parent Verification: Sire: Not Tested, Dam: Not Tested

Notes: A great coloured bull by Hotwire. A lot of scope in this sire. Another bull with a good balance of figures



**CHAPTER ONE - PRELIMINARY**

1. (a) A vendor is bound by these terms and conditions by offering livestock for sale by auction.
- (b) An agent (which includes an auctioneer) is bound by these terms and conditions by conducting an auction sale.
- (c) A buyer is bound by these terms and conditions by bidding at auction.
2. (a) In these terms the expression auctioneer, agent, buyer and vendor respectively includes the servants, contractors, agents of each of them. The auctioneer, agent, buyer and vendor shall be wholly responsible for the acts and omissions of their respective servants, contractors and agents. The term 'auctioneer' includes, so far as the law and context permits, the vendor's agent.
- (b) When used in these terms the expressions 'companion animals' means all animals originating from a property on a particular day.
3. Where lots are split and sent to multiple establishments, then all of these animals shall be regarded as companions. The following applies in interpreting these terms and conditions:
  - (a) The following words have the following meanings:
    - Fees means all levies, charges, fees, costs and other expenses incurred or relating to these terms and conditions and the sale and purchase of livestock including, without limitation, transaction levies, yard and weigh dues, cartage, advertising and rebates, and whether paid for, or incurred, by the agent; Livestock means animals auctioned pursuant to these terms and conditions; and Price means the amount at which the lot has been sold to the buyer referred to in clause 7 of these terms and conditions
    - (i) plus any Fees and other expenses incurred in relation to the purchase of livestock that are payable by the buyer; and (ii) plus any GST added in accordance with clause 12.
    - (b) These terms and conditions are subject to legislation or regulation in the State in which the auction is conducted and in the event of any conflict between the legislation or regulation will prevail. The provisions of these terms and conditions are in addition to, and do not derogate from, the duties and rights of vendors, agents and buyers set out in legislation and regulation in the State in which the auction is conducted.

**CHAPTER TWO - STANDARD TERMS OF SALE**

4. Subject to any reserve price, and to the right, prior to the fall of the hammer, of the vendor to withdraw any lot without declaring the reserve, the highest bidder shall be the buyer.
5. The auctioneer has the right to bid on behalf of the vendor provided that right is notified prior to the commencement of the sale and is subject to State law.
6. A bid cannot be made or accepted after the fall of the hammer unless, in accordance with clause 8, the auctioneer decides to put the lot up again.
7. The last price called by the auctioneer at the fall of the hammer shall be the amount at which the lot has been sold.
8. In the event of a disputed bid, the auctioneer is the sole arbitrator of the successful bidder or the auctioneer may decide to put the lot up again. The auctioneer's decision is final.
9. The auctioneer may refuse to accept any bid which, in the auctioneer's opinion, is not in the best interests of the vendor and need not give reasons for doing so. The minimum bid for live weight selling is 0.2 of a cent (\$0.002).
10. A bidder shall be deemed to be a principal unless, prior to bidding, the bidder has given to the auctioneer a copy of written authority to bid for or on behalf of another person.
11. The successful bidder at a livestock auction sale must give to the auctioneer at the fall of the hammer:
  - (a) the purchaser's name; or
  - (b) the bid card number which identifies the purchaser; or
  - (c) the name of the person on whose behalf the successful bid was made; and (d) the Property Identification Code (known as the 'PIC') of destination.
12. The auction shall be conducted on the basis that the bid price shall be exclusive of Goods and Services Tax (GST). GST shall be added after the fall of the hammer for those sales subject to GST.
13. As soon as practicable after the fall of the hammer, the buyer shall if requested by the agent, sign the agreement for sale.
14. If a buyer does not comply with any of these terms and conditions, which includes the requirements of State law, any livestock knocked down to that buyer may be re-sold by public auction or private contract in whatever lots and manner the auctioneer decides. The re-sale may be with or without notice and shall be at the buyer's risk. The buyer is responsible for all loss and expense arising out of a re-sale and is not entitled to any resulting profit.
15. The buyer of livestock must pay the agent the full amount of the purchase price in immediate funds on receipt of a tax invoice. Payment is required prior to delivery unless some other time for payment is specified in a written agreement between the buyer and the auctioneer that was made before the fall of the hammer.
16. No person may bid unless, prior to the commencement of the sale, that person has made arrangements satisfactory to the auctioneer for payment for livestock purchased. If bids in breach of this condition are inadvertently accepted, delivery shall not be given until the purchase money is paid and any law, rule or practice to the contrary is accordingly negated as far as possible.
17. (a) Cattle sold on a liveweight basis that are weighed pre-sale are at the risk and expense of the buyer upon the fall of the hammer.
- (b) Cattle sold on a liveweight basis that are weighed post-sale are at the risk and expense of the buyer immediately after weighing.
- (c) All livestock other than cattle sold on a liveweight basis are at the risk and expense of the buyer upon the fall of the hammer.
18. (a) Subject to this clause the sale is complete on the fall of the hammer.
- (b) The time for rejection is the time commencing at the fall of the hammer and ending at the first of:
  - (i) delivery is taken by a representative of the buyer;
  - (ii) departure of the animal from the purchaser's delivery pen; or
  - (iii) one hour after the last animal is:
    - a. in the case of pre-sale weighing, sold; or
    - b. in the case of post-sale weighing, weighed.
  - (c) During the time for rejection the buyer may reject any animal which is lame, blind or diseased where that condition existed prior to the fall of the hammer but could not be reasonably observed when the animal was in the selling pen.
  - (d) If the purchaser rejects an animal during the time for rejection then the sale of that animal is cancelled and the animal is returned to the vendor or sold at such price as the purchaser and the agent may agree.
  - (e) This sub-clause applies only to cattle which are sold in Queensland at auction for slaughter. The agent has responsibility for the prevention of loss or escape (but not death, sickness or injury) of those cattle from the time of the fall of the hammer, through delivery to and from the scales, to the buyer's delivery pen and on to the buyer's nominated transport. This responsibility ends at the earlier of those cattle boarding the buyer's nominated transport or sunset on the day after the sale. This sub-clause does not apply if the agent makes an announcement to that effect prior to sale.
19. (a) Subject to the right of rejection in Clause 18, all conditions and warranties expressed or implied by law are hereby excluded from the sale to the extent that the law allows. All lots are open for inspection prior to the commencement of the sale and are sold with all faults, if any. No compensation shall be given for any faults, imperfections, errors of description, number in or of any lots sold or otherwise.
- (b) Any claim or objection arising out of an error or misdescription in the provision of relevant information in terms of legislation or regulation concerning the National Livestock Identification Scheme (NLIS) must be made by 5:00pm on the seventh day after the fall of the hammer. No objection, requisition or claim against the vendor or agent in respect of such error or misdescription can be made after that time.
- (c) Any statements made by the vendor or the auctioneer whether in writing or orally to the effect that any female has been pregnancy tested or scanned positive shall mean and require only that a certificate in writing shall be supplied to the buyer signed by a qualified veterinary surgeon or certified scanner certifying that the said female has been tested or scanned on the date specified in the certificate and that in the opinion of the surgeon or scanner the female was pregnant on that date.
- (d) For cattle, the agent undertakes to make every reasonable effort to ensure that any NLIS cattle device number is transferred from the saleyard account to the purchaser's account on the NLIS database no later than midnight on the day of the sale.
- (e) Where livestock have a food safety or market eligibility status derived from the NVD and/or the NLIS/ERP database, the agent will inform the buyers by pre-sale catalogue in conjunction with vendor branding and/or announce the status prior to the offering of those lots.
20. If delivery is made to, or possession obtained by, the buyer or its representative before full payment of the Price, then until full payment is received, the buyer:
  - (a) does not acquire title to the livestock;
  - (b) holds the livestock as bailee only for the vendor;
  - (c) must act in a fiduciary capacity in its relationship with the vendor;
  - (d) must store the stock separately or so that they are readily distinguishable from other livestock owned by the buyer;
  - (e) is responsible for the safety and well being of the livestock;
  - (f) may make a bona fide sale for market value of any or all of the livestock. As between the buyer and the subsequent buyer, the sale shall be made by the buyer in its own name and not as agent for the vendor, however as between the vendor and buyer, the sale shall be made as bailee and agent for the vendor; and
  - (g) must keep and account for the proceeds of any subsequent sale separately from its other money and hold those proceeds, together with the benefits of any rights against subsequent buyers, on trust for the vendor.
21. In addition to clause 20, if payment is not made according to clause 15, but delivery has been made to, or possession obtained by, the buyer or its representative:
  - (a) The vendor or its agent may repossess and resell the livestock and enter property owned or occupied by the buyer or its representative if necessary to do so; and
  - (b) Interest may be charged at the rate usually charged by the agent for overdue accounts on any amounts which remain owing at any time.
22. The buyer may not make any claim against the vendor for actions by the vendor or its agent under clauses 20 or 21 and indemnifies the vendor and its agent against any loss, damage, costs, expenses, penalties, fines or claims suffered by the vendor, the agent or any person or entity arising from the vendor exercising its rights under clauses 20 or 21.
- 23.1. Clause 23 applies whenever the agent pays the vendor before being paid by the buyer, which the agent is not bound to do. The agent is then the del credere agent of the vendor at law.
- 23.2. The vendor hereby gives notice to the buyer of the assignments referred to in clause 23.3.
- 23.3. When this clause applies, in addition to any rights of the agent that arise by operation of the law, the parties agree that, subject to clause 23.6 the agent is subrogated to all rights of the vendor under these terms and conditions against the buyer.
- 23.4. Title to the livestock does not pass to the agent or a nominee of the agent unless the agent, by written notice to the vendor, notifies the vendor that it is to be transferred to the agent or a nominee of the agent.
- 23.5. The vendor acknowledges that the agent may take enforcement, repossession or other action to recover any livestock for which the buyer has not paid in full, or the Price of such livestock, owing by the buyer under these terms and conditions:
  - (a) when this clause does not apply, as agent of the vendor (including by reselling the livestock); and

- (b) when this clause applies, on the agent's own behalf exercising the rights of the vendor by subrogation or assignment under these terms and conditions (whether in the vendor's name or not) and, where title to the livestock has not passed to the agent, by selling the livestock as agent of the vendor without the agent having to account to the vendor for the proceeds of sale.
- 23.6. The agent may at any time, assign, transfer, securitise or otherwise dispose of all or any of its rights under these terms and conditions and any debts created pursuant to it (including, without limitation, the rights assigned to it under clause 23.3).
- 23.7. The vendor hereby irrevocably appoints the agent as the vendor's attorney to:
  - (a) do at any time and in any manner as the agent thinks fit all acts necessary or desirable to perfect or improve the rights and interests afforded, or intended to be afforded, to the agent under these terms and conditions; and
  - (b) appoint one or more sub-attorneys to do anything that the agent may do as the vendor's attorney.
- 23.8. These terms and conditions do not render the agent liable to the buyer as vendor nor entitle the buyer to set off against the agent any right the buyer may have against the vendor or otherwise.
- 23.9. The buyer acknowledges that the provisions of this clause 23 are intended solely for the benefit of the agent (and its assigns) and the vendor. The liabilities and obligations of the buyer will not be in any way affected:
  - (a) by this clause 23, other than as it expressly provides; or (b) by the failure of the agent or the vendor or either of them to comply with the terms of this clause 23.
- 23.10. The buyer must pay all amounts payable to the vendor or the agent under these terms and conditions without any deduction, withholding, set off or counterclaim whatsoever, whether the benefit of a deduction, withholding, set off or counterclaim is alleged to exist in favour of the buyer as against the vendor or the agent in any capacity whatsoever or any other person including any assignor of the vendors or the buyers interests under these terms and conditions.
24. (a) The agent agrees that he is liable to pay to the vendor the Price, less such commission as is agreed between the vendor and the agent, and in the absence of any agreement such amount as is reasonable, and less the Fees that are payable by the vendor that were incurred by the agent on behalf of the vendor in relation to the sale of the livestock.
- (b) In the event that the buyer pays the Price or part of it direct to the vendor then the agent has no liability to the vendor for the amount of such payment. Further, if the agent pays the vendor any amount which the buyer also pays direct to the vendor in respect of the same livestock, then the vendor must repay the agent that amount and the agent may debit that amount to an account held in the name of the vendor by the agent.
- (c) Regardless of whether or not a sale has occurred the agent may, but is not under obligation so to do, instead of deducting payments owed to it by the vendor, debit the amount of the commission and fees to an account held in the name of the vendor by the agent.
25. The auctioneer has been retained by the vendor as auctioneer for the purpose of selling the livestock comprised in the lots. The terms of engagement between the auctioneer and the vendor do not extend to the provision of advice by the auctioneer to the vendor in relation to the safety or otherwise of the sale ring, the saleyards and the surrounding environments.

**CHAPTER THREE - VENDOR WARRANTY FOR CORRECT PRESENTATION AND DECLARATION**

26. This chapter applies only in the case of livestock and their companion animals sold at auction for slaughter when the buyer is the slaughterer and the livestock are transported direct from the sale yard to the meatworks at which they are slaughtered. This chapter does not apply if the buyer is a trader who subsequently resells the livestock to a slaughterer. A slaughterer is any person who pays the AMP Processor Levy.
27. The warranty of a vendor is that livestock and their companion animals offered for sale at auction:
  - (a) pass AQIS and other regulatory authority requirements and inspections at the time of slaughter;
  - (b) are of merchantable quality;
  - (c) carry an NLIS device in accordance with State law;
  - (d) in the case where a representation has been made in the pre-sale catalogue that the livestock have particular characteristics or are fit for a particular purpose or market, and such representations are based on information in the National Vendor Declaration, the livestock will have those characteristics or will be fit for the particular purpose or market; and
  - (e) all information in any National Vendor Declaration provided by the vendor is true, complete and correct in all material respects.
28. In the event of a breach by the vendor of the vendor's warranty and provided such breach is notified by the buyer to the agent by 5:00pm on the 7th day after the fall of the hammer then the buyer is not liable to pay the portion of the Price of such of the vendor's livestock to which the breach applies.
29. However if the breach by the vendor is such that the livestock are not rejected outright but are instead downgraded then the buyer will pay the value of the livestock at their next highest and best use.
30. In the case of a breach by the vendor of the vendor's warranty then the vendor will also be liable to the buyer for any further losses which the buyer might establish but the buyer will take all reasonable steps in co-operation with the agent and vendor to mitigate both the effect of the breach and the amount of any loss.
31. Where a sentinel animal of a lot tests positive for chemical residue, and provided such test is certified and notified as required by these vendor warranty terms, then:
  - (a) the buyer will be entitled to delay payment for the price of all livestock in that lot; or
  - (b) the vendor has the option, at the vendor's cost, of collecting the companion animals and returning them to the vendor's property; or of having the livestock slaughtered in which event the risk of further condemnations will be that of the vendor. Where product integrity is potentially jeopardised, the Processor has the right to refuse slaughter and send the livestock back to the consigning property at the vendor's cost.
32. The auctioneer is liable to the buyer in respect of any breach of the vendor's warranty arising out of:
  - (a) any error, by the auctioneer, of transcription of information from the National Vendor Declaration completed by the vendor to the pre-sale catalogue or the buyers post-sale summary;
  - (b) any failure by the auctioneer to notify the buyer, prior to bidding, of any breach by the vendor of the warranty of the vendor if the buyer establishes that the agent knew of such breach prior to the sale; and
  - (c) any failure by the auctioneer to disclose prior to bidding, and in the pre-sale catalogue, that the vendor has failed to provide a National Vendor Declaration that is complete in all material aspects.

**CHAPTER FOUR - OWNERS RISK FOR CONDITION OF CATTLE**

33. This chapter applies only in the case of cattle and their companion animals sold at auction for slaughter when the buyer is the slaughterer and the cattle are transported direct from the sale yard to the meatworks at which they are slaughtered. This chapter does not apply if the buyer is a trader who subsequently resells cattle to a slaughterer. A slaughterer is any person who pays the AMP Processor Levy.
34. Owners risk reflects the producer's responsibility to provide slaughter cattle for sale that are fit for human consumption. Cattle are fit for human consumption if they are not condemned as unfit by AQIS. Owners risk applies if the condemnation is due to a condition in the animal which the buyer establishes, by the AQIS certificate, existed prior to the fall of the hammer.
35. A buyer with the benefit of owners risk protection is not liable to pay the Price of that animal to the vendor. The buyer remains nevertheless liable for all costs incurred after the fall of the hammer in transport, slaughter, testing and disposal of the animal.
36. Owners risk protection is available to the buyer of cattle to which this chapter applies if all of the following are satisfied:
  - (a) a certificate is issued by AQIS which states the relevant NLIS RFID tag number and PIC, the date of the certificate, the reason for condemnation and that the reason for condemnation existed prior to the fall of the hammer;
  - (b) the certificate is received by the selling agent either in its original form or by fax by 5:00pm on the 7th day after the fall of the hammer; and
  - (c) if the condemnation is due to chemical residue the certificate follows testing in an AQIS approved laboratory which establishes maximum residue limits in excess of the Australian limit.
37. Owners risk does not apply, and the buyer must pay for the cattle, if the reason for condemnation is any of the following:
  - (a) bruising,
  - (b) fever,
  - (c) partial condemnation, or
  - (d) emaciation.

**CHAPTER FIVE - NOTICES REQUIRED BY STATE LEGISLATION****NSW Legislation**

Property, Stock and Business Agents Act 2002 Warnings Penalties for collusive practices. It is an offence against the Property, Stock and Business Agents Act 2002 for a person to do any of the following as a result of a collusive practice, or to induce or attempt to induce another person by a collusive practice to do any of the following:

- (i) to abstain from bidding; or
- (ii) to bid to a limited extent only; or
- (iii) to do any other act that might prevent free and open competition.

Severe penalties may be imposed on persons convicted of collusive practices. The auctioneer has the right to make one bid on behalf of the vendor if the auctioneer clearly and precisely announces that fact prior to the sale.

**Tasmanian Legislation**

The auctioneer must not appear to acknowledge a dummy bid. A buyer must not give, agree to give or offer a gift or other consideration to a person for abstaining from bidding and a person must not accept any gift or consideration for abstaining from bidding.

A person must not participate in collusive practices by way of making or receiving an unlawful promise to abstain from bidding, not to bid except to a limited extent or do any other thing which may prevent free and open competition.

**Western Australian Legislation - Auction Sales Act 1973 s31 NOTICE**

It is an offence to:

- (i) induce or attempt to induce another person to abstain from bidding by means of a promise, expressed or implied, that the other person will have the right to elect to take over as buyer or to toss or draw lots to establish who is to become the owner;
- (ii) abstain or agree to abstain from bidding as a result of such a promise;
- (iii) knowingly enter or permit or cause to be entered in the auctioneer's record any name other than that of the actual successful bidder;
- (iv) enter in the auctioneer's record the name of the buyer other than that of the actual successful bidder; or
- (v) in the case of successful bidder supply wrong information as to the name of the buyer to the auctioneer or to any person, firm or corporation on whose behalf the sale is conducted. The vendor, or any person on behalf of the vendor, or the auctioneer have the right to make no more than three bids.

© 1 FEBRUARY 2011

Australian Livestock & Property Agents Association Limited All rights reserved. Unauthorised reproduction in whole or in part is an infringement of copyright. These are recommended conditions of sale. They are provided to ALPA members as recommended terms and conditions only.

# BUYERS INSTRUCTION SLIP



Name .....

Address .....

.....  
.....  
.....

--	--	--	--

Phone ..... Mobile .....

Email .....

Lots Purchased .....

Consign to .....

Insurance for the following period.....

Invoice to .....

Signature of buyer .....

**DELIVERY LOCATION (MUD MAP)**

A large, empty rectangular box intended for a mud map or delivery location details.

**SELLING AGENTS**  
**Elders Ltd, Walcha**



# ELDERS WALCHA

Livestock, Farm Supplies, Agronomy,  
Wool, Real Estate, Insurance & Finance

Elders Walcha have a dedicated local team committed to our clients and our community. Our team love your business like you do. Experience the difference and contact the Elders Walcha Branch today for all your agribusiness needs.

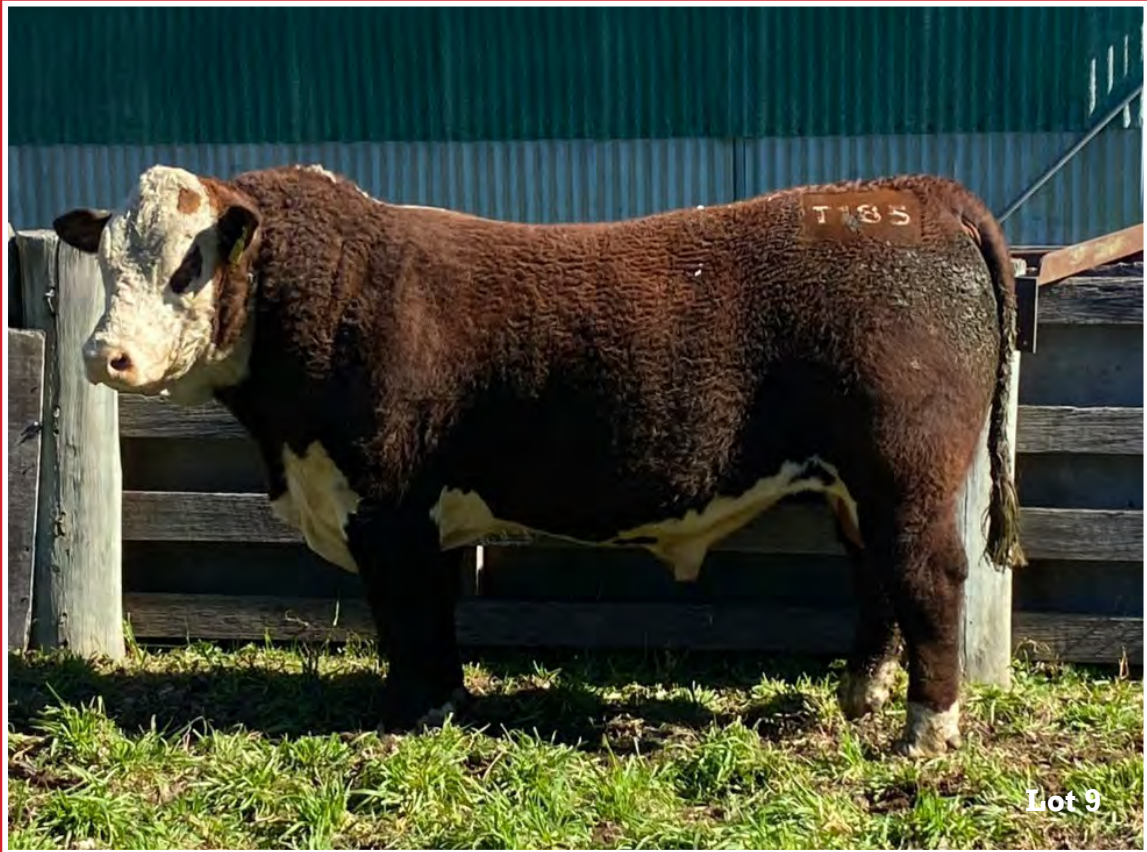
James Sharpe	Branch Manager / TSM	0409 272 490
Allan Laurie	Territory Sales Manager	0455 821 394
Thomas Henry	District Wool Manager	0409 659 877
Katrina Campbell	SSO / Rural Products Sales Rep	0417 222 109
Kayla Bakewell	Rural Products Sales	0400 265 175
Kate Matthews	SSO Armidale	0484 923 445
Stephanie Young	SSO Armidale	0428 727 501
Ben Green	Rural Real Estate Sales	0412 100 681
Jon Goudge	NSW Agri Finance Development Manager	0428 668 005

**Elders Walcha**  
110w Fitzroy Street  
02 6774 2600  
dg\_walcha@elders.com.au



*Elders*





## Directions to Yalgoo

**Yalgoo** is situated approximately 11kms north of Walcha on the Uralla Road



## Yalgoo Genetics

Jock Nivison 0497 762 977 | Grant Nivison (02) 6777 2525

jock@yalgoogenetics.com.au | [yalgoogenetics.com.au](http://yalgoogenetics.com.au)

Ivy Bank | Allan Green 0408 469 568