



# 62<sup>ND</sup> YALGOO BULL SALE

*In conjunction  
with Ivy Bank*

**Monday 14th August 2023**

*Your Carcase Choice*



## **CONTACTS FOR INSPECTIONS**

*(or from 11am on Sale day)*

Grant Nivison: 02 6777 2525

Jock Nivison: 0497 762 977

Paul Jamieson: 0428 667 998

Brian Kennedy: 0427 844 047

Elders Walcha: 02 6774 2600

Paul Dooley: 0458 662 646

Mike Wilson: 0418 960 036

Nick Hall (Hall Ac): 0436 449 033

Free delivery to  
NSW, QLD, VIC and TAS.

***Elders***





# 62<sup>ND</sup> YALGOO BULL SALE

*In conjunction with Ivy Bank*

**46 Profit Driving Bulls**  
ALL SALE BULLS SEMEN TESTED

Videos of all lots available 2 weeks prior to sale date  
[yalgoogenetics.com.au](http://yalgoogenetics.com.au)

**Monday 14th August 2023**  
Commencing 1:30pm  
*Lunch and smoko available at the sale*

JBAS Status - Yalgoo has level 7 JBAS accreditation

Sale Details: A rebate of 2% will be paid to outside agent introducing approved buyers in writing, 24 hours prior to commencement of the sale, accompanying them and settling within seven days of the sale.



This sale is interfaced with AuctionsPlus and will be conducted live online in real time. Bidding is available only to registered AuctionsPlus users. To bid you must register, preferable 24hrs before the sale. Contact AuctionsPlus on 02 9262 4222 for more information







# WELCOME

## to YALGOO 62nd

### Performance Recorded Sale

# Your Carcase Choice!

**THANKYOU** for taking time to consider the Yalgoo program. After 74 years of breeding and 61 sales; today more than ever we take our responsibility of adding genetics to your herd seriously. We strive to offer a total program; from strict herd management to superior genetics and a market demanding phenotype. All boxes are ticked, no short cuts are taken – we call this process Best Practise Genetic Improvement.

We provide:

- ✓ Sound, functional bulls carrying superior genes
- ✓ Industry best quality assurance including:
  1. Independent structure & fertility testing on sale bulls
  2. Serving ability tested bulls
  3. Genotyped and parent verified bulls
  4. Bluestar pre-sale vaccination program
  5. Semen tested bulls
  6. High data integrity (**5 star Breedplan rating**)
  7. Commercially, acceptable phenotype
  8. Unique bull depreciation model to control bull costs
  9. Industry best practise herd management

This sale really is “Your Carcase Choice.” 80% of the sale are in the top 30% of the breed for both EMA and IMF. The 2023 sale averages in the top 10% for both EMA and IMF. We get told these are traits that our commercial cattlemen are struggling to find simultaneously. We have been selecting sires for many years that excel in both these traits as well as displaying an expressive muscle pattern across the hindquarter primals. The industry is currently working on body condition score EBV's. Body condition is the primary driver for female conception. By having a long history of selecting for visual muscle, EMA, FAT and IMF we expect this combination of traits to be the genetic drivers of body condition score. Simply put; we are filling the petrol tank up to the limit to allow our clients to get the most from their cattle through their management.

I find it frustrating that when we experience a beef boom, we get told by pundits that we are in a new price paradigm. Australia by nature has a fluctuating beef supply continuum driven by many factors, one being our erratic climate. By nature this means prices will cycle according to our national herd inventory. As producers, our KPI's never change. We see trends come and go, but efficient beef production wins over the long term. It is of good comfort for Hereford and Hereford cross producers, that they are producing more with less. As we look to a future of market opportunities and compliance pressures; an animal that grows quickly, is highly fertile and delivers a premium product with the lowest amounts of natural resources will be paramount. Moderate, easy fleshing Hereford infused cattle carrying high gaining genetics are this article.

You will notice in this year's catalogue I have often commented on the number of traits in the top 30% of the breed for each lot. To me; this tells you two things. One they have strong performance and two they have balanced performance. 90% of the bulls have 11 traits/ indexes that are in the top 30% of the breed or better.

These bull's also average in the **TOP 12% for the breed for the SSR index**. This makes the Yalgoo sale one of the **highest indexing sales in the country**. Now what does this mean??

As always numbers in context are the key to determining what financial impact this will have on your business. The following example of a 500 cow herd, demonstrates the economic power of Yalgoo genetics vs breed average genetics:

#### Assumptions:

- BREEDER NO: 500
- WEANING: 90%
- YEARLING CATTLE: 450
- MATING RATE: 2%
- ANNUAL BULL REPLACEMENT RATE: 20%
- Genetic difference of \$24.50 is constant over 10 year period



BULL SOURCE	INDUSTRY AVERAGE	YALGOO 23 SALE TEAM
Index value	\$131	<b>\$180</b>
Difference in genetic gain per generation	+\$5	<b>+\$24.50</b>
Extra Calf Crop Income From Genetic Gain Over 10 Year Period	\$9000	<b>\$216 000</b>

It's imperative when you are considering bulls that you put economic impact at the top of your bull selection criteria. Our job is to balance this with the type you like to look at and the cost of these genetics to your business.

Regarding costs; Bull costs can be a major contributor to cost of production. The cost of genetics has been extreme in the past few years. Bull cost's per calf of \$200+ per calf are becoming more common. These costs are a major handbrake on profitability and I encourage you to consider your calf costs. The investment risk of genetics is such that-

- The payback period is long and generally covers high and low beef cycles.

The only way to control this risk is for the bulls to last longer. This amortises your financial investment by producing more calves per bull and lowering the cost per calf born. Our Bull Breeding Soundness Evaluation (BBSE) data suggests our bulls are lasting close to 5 matings. Our BBSE is designed to give you the confidence to mate at 2%. Allowing you to spread your bull investment across more cows.

Our investment in Genomics continues to increase. In 2022 across our cattle and sheep enterprises we collected over 2000 samples of DNA. Experience gained from our sheep enterprise has re-enforced the benefits of improved accuracy and distribution of animals for our clients. Improved accuracy of EBV's allows our clients to purchase bull's with the confidence that high performance genetics will deliver real world profitability.

In the bull notes, we have included recommendations on which market/ system that individual lots would be best suited to. The heifer (H) and multi-purpose (MP) bulls, we believe are safe to use over heifers.

This year's bulls are a culmination of piecing together balanced performance and putting the cattle under significant paddock pressure for over 7 decades. A 'no passengers policy' ensures herd productivity is consistently high. This group of bulls are certainly our best effort at combining high carcase merit and good design. I really encourage you to inspect them in the flesh.

We would like to thank everyone who has supported our program. We look forward to seeing you at our 62nd sale. If you require more information please get in contact with me.

Cheers, Jock

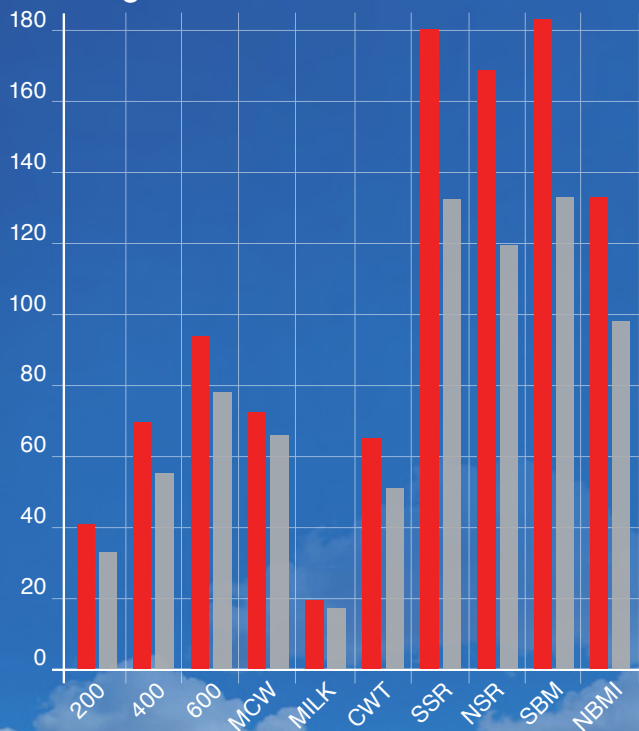
*All lot's will be videoed and Video's will be available at least two weeks before the sale on the HAL, Auctionsplus and Yalgoo websites.*

**IMPORTANT NOTE: The guarantees/ information provided within this catalogue are applicable to YALGOO bulls only. Please speak to Alan Green for Ivy Bank protocol.**



# Sale Team vs Breed Average

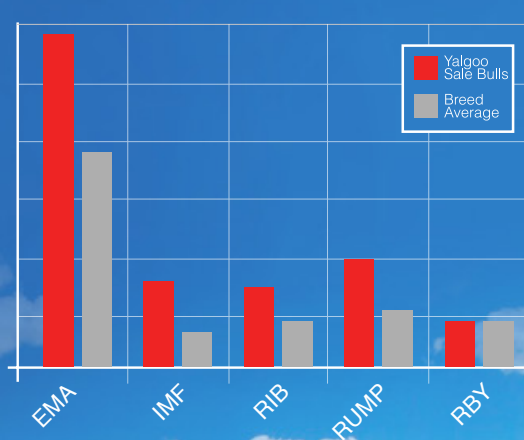
Weight & Profit



Fertility



Carcase



## Recent Awards

FOR YALGOO GENETICS



2016  
Finalist for  
NSW Farmer  
of the Year



2017  
Australian  
Sheep Farmer  
of the Year



2018  
Nominee for  
Agricultural  
Innovation  
Award



2019  
Hargraves  
Institute,  
Innovation  
Award



2019  
Agricultural  
Advocacy  
Delegate to  
Canberra

# Does a higher beef price equate to a proportionally higher return for all beef producers?



I ask you to consider these following simple sums:

## Assumptions:

2013 feeder steer price: \$2.00/kg

Angus Premium: 10 cents

Heterosis: 10%

2013	Angus	Black Baldy
Steer Weight (kg)	500	550 (10% Heterosis)
Price (\$/kg)	\$2.00	\$2.00
Premium (cents)	10	0
Gross (\$)	\$1050/hd	\$1100/hd
Income/100hd	\$105 000	\$110 000
Income difference/100hd	<b>-\$5000</b>	+\$5000
Income differential (%)	<b>-2.4%</b>	+2.4%

If we consider the initial question, then the answer is no. The black baldy producer is getting rewarded more than 2% extra over the pure bred producer in a high beef cycle. When the beef price is very low, a little bit of a premium can be helpful. However, when the price is historically high then production becomes increasingly important.

This is because regardless of what the market is doing; the fundamental profit drivers of beef production don't change. Fertility and weight in conjunction with stocking rate, drive profit faster than anything else.

Depending on how many maternal benefits you include in your heterosis, you gain a minimum of 10% in a two way breed split. This is fixed.

## Assumptions:

2016 feeder steer price: \$3.50/kg

Angus Premium: 10 cents

Heterosis: 10%

2016	Angus	Black Baldy
Steer Weight (kg)	500	550 (10% Heterosis)
Price (\$/kg)	\$3.60/kg	\$3.50/kg
Premium (cents)	10 cents	0
Gross (\$)	\$1800/hd	\$1925/hd
Income/100hd	\$180 000	\$192 500
Income difference/100hd	<b>-\$12 500</b>	+\$12 500
Income differential (%)	<b>-4.8%</b>	+4.8%

## There has never been a more important time to be cross breeding.

Where as we can see in the example above; the price premium is not fixed and actually diminishes as the beef price goes up.

In conclusion when the feeder steer price is \$2.00/kg live weight, the pure bred producer needs a price premium of 20 cents/kg to break even with the black baldy producer.

When the feeder steer price is \$3.50 /kg live weight, the pure bred producer needs a price premium of 35cents/kg to break even with the black baldy producer.



# GET MORE !BANG! FOR YOUR BLACK

## Heterosis: You are getting taxed if you don't utilise it

### What is it and what does it do?

- Heterosis, hybrid vigor, or outbreeding enhancement, is the improved or increased function of any biological quality in a hybrid offspring. Achieved through the mixed genetic composition of parental genetic makeup
- Heterosis accelerates lowly heritable traits, that are not easily/quickly achieved in purebreds
- The following results are based on US research studies using genetically breed average Hereford bulls over Angus cows Vs genetically breed average Angus bulls over Angus cows

### Why we need it?

1. F1 cow is 8% more efficient than pure bred cow (transforming grass milk) (USMARC)
2. F1 cow lives 38% longer than pure bred (USMARC)
3. F1 cow has 25% more production in kilograms of calf weaned (USMARC)
4. F1 female reaches puberty before a pure bred (MSU study)

### Cost and Income Benefits

- Result: F1 female lives longer & is more fertile therefore there is a decrease in replacement costs
- Result: F1 female has an advantage in pregnancy rates of 7% (H R Heterosis Project)
- Result: F1 female more likely to get in calf as a two year & will produce more calves in her lifespan than a pure bred
- These attributes result in a 10% cost saving on cow production costs over a pure bred herd (US MARC)

### Health Benefits of Heterosis

- Genetics control immune response and immunity
- Pure bred doubles up more of the undesirable immune-response genes (in breeding)
- Crossbreeding ensures more genetic diversity and optimal immune response
- Thus, a crossbred cow tends to have more optimum immune system function than a straight bred cow
- Results in a healthier mum producing better colostrums which results in a healthier and heavier calf (decrease in infant immune diseases and subclinical losses)

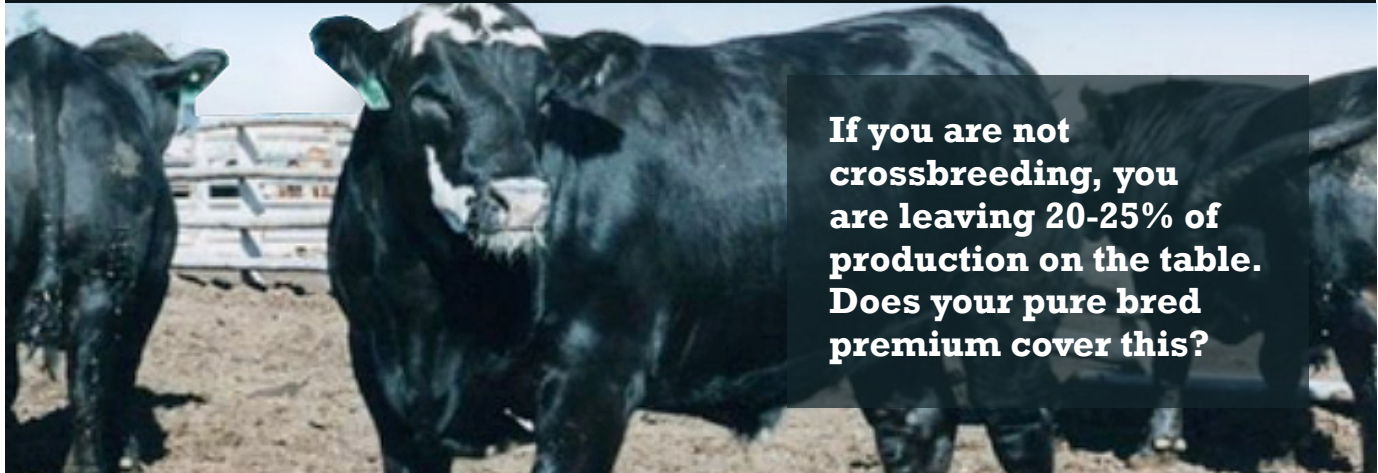
### Real World Proof: Recent Studies

- Profitability studies undertaken on the merits of cross breeding in the leading purebred black herds of Simplot Livestock Co., Lacey Land and Livestock, Harris Ranch and Circle A Angus in the US
- All studies showed a marked increase in income of the Hereford sired progeny over the pure black progeny
- Harris Ranch findings: Through the first year of the multiyear study, the crossbred calves had a \$78/head advantage, compared to their straight bred peers (Table 1). There was a slight advantage to the crossbred (\$10.80/head) for increased weaning weight, but most of it came through feedlot and carcass performance.
- The Hereford-sired group had a definite advantage in average daily gain, dry-matter feed conversion and, ultimately, cost of gain compared to the Angus-sired group.

Traits	Angus Sired	Hereford Sired
Ranch		\$10.80
Back ground		\$14.10
Pre Feedlot		\$24.90
Feedlot		\$86.10
Carcase	\$33.27	
Feed lot and Carcase		\$52.83
Net Value Difference		\$77.73

Study conducted by Dave Daley and Sean Earley, California State University-Chico; co-operators are Lacey Livestock, CA; American Hereford Association; Harris Feeding Co.; Harris Ranch Beef Co.

If you need assistance in implementing a black baldy cross breeding program please contact Yalgoo or Herefords Australia.



**If you are not crossbreeding, you are leaving 20-25% of production on the table. Does your pure bred premium cover this?**





## **AIM**

To assist you in selecting bulls; for your specific production system or target market.

## **RATIONALE**

Although indexes are an important indication to the suitability for a specific market there are other factors that will determine whether that bull's progeny will be best fit for a specific market.

We have combined the genotype and phenotype to form our recommendation.

## **METHODOLOGY**

Recommendations are our subjective opinion of the suitability of a certain bull for a specific market/production system.

We have used a combination of maturity type, Indexes, EBV's, visual muscle content, feedback from clientele/processors and raw data to form our recommendations.

## **DESCRIPTIONS**

### **SM = Supermarket Trade**

To form our SM recommendations we have primarily used processor feedback.

For a bull deemed to be suitable for the SM trade he has to have a favourable combination of visual muscle, maturity type and SM index.

### **MSA = MSA Compliance driven markets**

To form our MSA recommendations we have primarily used the June SBTS Tech talk document: "Meat Standards Australia Breeding: for Improved MSA Compliance & Increased MSA Index Values"

A bull recommended for MSA compliance markets must have a favorable combination of the following traits:

- temperament
- fat EBV's
- 200 400 600
- IMF
- carcase weight
- visual muscle

### **F = Feeder Animal**

To form our recommendations we have primarily used feedlot feedback/acceptability of Yalgoo and Yalgoo client's cattle. As well as conducting our own market research.

A bull recommended for use in a system producing feeder steers will have a favorable combination of maturity pattern and the GN index.

### **EU = EU Market**

To form our recommendations we have primarily used feedlot/processor feedback/acceptability of Yalgoo and Yalgoo client's cattle. As well as conducting our own market research.

A bull recommended for use in a system producing animals for the EU market will have a favorable combination of maturity pattern and the EU index.

### **HGS = Heavy Grass Finished Market**

To form our recommendations we have primarily used processor feedback/acceptability of Yalgoo and Yalgoo client's cattle. As well as conducting our own market research.

A bull recommended for use in a system producing animals for the HGS market will have a favorable combination of visual muscle, maturity pattern and the GS index.

### **BB = Black baldy**

To form our BB recommendations we have primarily used client/consultant feedback.

Use the Grain Fed Index to select for bulls suitable for a BB herd.

As well as the GN index; for a bull deemed to be suitable for a BB production system he must have a specific balance of traits. This is not to suggest that other bulls won't fit into a BB herd. However, following consultation with existing BB producers it was determined that this balance will be the most profitable in a system using stocking rate as its primary profit driver and producing a 480-520kg black baldy feeder steer in temperate Australia.

### **W = Weaner Producer**

To form our recommendations we have primarily used market research. A bull recommended for use in a system producing animals for the W market will have a favorable combination of maturity pattern and 200 day growth.

### **HB = Heifer Bull**

To form our heifer bull recommendations we have primarily used the genotypic calving ease traits of CEDIR, BW, GL as well as the phenotype and pedigree of the bull

### **MP = Multi Purpose Bull**

These bulls are suitable for cows and heifers. To form our recommendations the bulls need to have a favourable combination of genotypic calving ease and growth traits

# YALGOO BULL QUALITY ASSURANCE

## Bull costs and their impact on profit.

The primary role of a bull is to get live calves at a reasonable cost. The cost of a calf sired is a direct result of the longevity of the bull and the price paid for the bull.

1. **Structural integrity**
2. **Libido**
3. **Pre sale and post sale management**  
(incl nutrition & disease management)
4. **Genetic merit of a bull**
5. **Temperament**
6. **Resilience**

## BACKGROUND INFORMATION

Bull failure through breakdown or infertility is a major industry issue. Independent studies have suggested it could be around the 30% - 40% per annum across the industry. Problems often arise between the bull supplier and client as to compensation for a bull failure which is quickly compounded by empty cows. At Yalgoo we are determined to offer industry best practise regarding BULL QA.

Even more of a financial threat is purchasing a bull that is never going to get cows pregnant. Bull Quality assurance was revolutionised in the late 1970's and 80's through work done by Dr. Mike Blockey. After testing thousands of commercial bull's of all ages he showed that 25% of bull's tested were unfit for service. He then developed a protocol to ensure these bull's would be identified before they were sold. This was known as the Serving Ability Test (SAT). Industry uptake was good through the 90's, however it seems there is an industry trend away from bull testing again. Disturbingly this means that around 1 in 4 bulls will again be entering the Australian beef herd unfit for service.

New Zealand research by Greg Tattersfield suggested 28% of commercial working bull's are unfit for service. And the Holmes and Sackett research suggested 18% of young bull's are unfit for service. If you are purchasing un tested bulls, how would you know? Serving Ability Testing, although laborious is the definitive test we have to ensure bull's are going to be able to fulfil their primary role.

The other advantage of Serving Ability Testing is to give the bull sexual experience. With sexual experience under his belt, he is more likely to get more cows pregnant in the first cycle. This increases the pressure put on herd fertility as well as having management benefits. Most importantly it means more weight in progeny at sale time which means more income.

**At Yalgoo we offer a pre-sale protocol that is industry best standard.**

Our program is as follows:

- **ALL YALGOO SALE BULL'S HAVE BEEN SEMEN TESTED**
- **INDEPENDENT STRUCTURAL ASSESSMENT.** Bulls and females are independently assessed for structural soundness and temperament, by Ian Crawford
- **NO HOOF TRIMMING.** There has been no hoof trimming on Yalgoo for 20+years
- **VET CHECKED.** All bulls are vet checked by Ian Crawford. Yalgoo sale criteria states that all bulls must measure 32cm or larger for testicle circumference at 400 days. Hocks, feet, penis and jaw structure are also examined. All bulls are scored for testicle tone and any bulls with abnormalities are culled
- **TESTICLE TONE SCORED.** To semen test or not to semen test? Research has shown that if testicles are firm, springy and of adequate size then the bull has a 98% chance of delivering good quality semen. Because semen quality rises and falls ad infinitum, semen testing is not the ideal method to get an overall picture of the bull's potential to deliver quality semen year round. For more information please contact us
- **PFIZER BLUE STAR.** All sale bull's are tested to ensure no Persistently Infected animals with Pestivirus are sold. All bull's are vaccinated according to Blue Star protocol
- **FEEDBACK:** To further improve our bull QA we need your help! With the bull you have purchased you will receive an audit of performance. We encourage you to fill out this when/if a problem arises with your bull, and get it back to us. We will use this information to improve our bull QA to ensure our bulls last longer. Everyone in the bull supply chain will benefit from these records.
- **WARRANTY:** Bulls are depreciated over their working lifetime. This results in a stable calf cost for the purchaser. Please speak to Jock regarding the functionality of this warranty.
- **CLIENT GUIDANCE FOR BULL QA:** Please speak to us if you require any assistance in developing your own protocol to ensure your bull's are fit for service each year pre-joining. As your bull ages the likelihood for him being unfit for service increases. i.e. A 6 year old bull is 4 times more likely to be unsound for breeding than a three year old bull.



# AGE OF PUBERTY TRIAL/ EBV

**Yalgoo has partnered with nine other seedstock herds, Herefords Australia, Angus Australia and with scientists at AGBU, in an MLA funded research project examining the genetics of age at puberty in temperate beef breed heifers.**

Age at puberty was assessed in 3,000 Angus and 1,000 Hereford heifers by regular ultrasound scanning, from weaning to synchronisation for AI, to detect first oestrus. This method was developed and proven for tropical beef breeds as part of Beef CRC research and has become the basis for more accurate description of female reproduction in the Brahman, Santa Gertrudis and Droughtmaster BREEDPLAN evaluations.

Results for Angus and Hereford heifers showed that:

- there is significant genetic variation for age at puberty,
- that the trait is heritable, and
- Therefore could be improved by selection.

Just as importantly for temperate breeds, where reproduction rates are generally considered acceptable, it could provide a means of monitoring the genetics of female reproduction as selection pressure is applied to improve other aspects of productivity (carcass quality, growth and calving traits for example).

Trial EBVs for age at puberty have been distributed to the participating breeders. The range in those EBVs is 74 and 141 days respectively, for the sires of Hereford and Angus heifers evaluated for the project. This means that the female progeny of the lowest (most desirable) age at puberty Hereford and Angus bulls would, on average, become pubertal 37 and 70 days earlier than the heifer calves of the sires with the highest age at puberty trial EBVs.

The results of this study underpin new research (the Southern Multi-Breed Project) which will involve Angus, Hereford, Wagyu, Shorthorn, Charolais and Brahman animals. This is a large MLA funded initiative, one of the focuses of which will be to improve the BREEDPLAN genetic evaluation of female reproduction traits for temperate beef breeds. This new research will be linked to the Repronomics® project in Northern Australia, which is driving the accuracy of genetic (and genomic) evaluation of female reproduction and other economically important traits for northern beef breeders.

The Trial Age at Puberty EBVs are a valuable step in helping breeders to select cattle that balance reproduction, growth and carcass merit, and other traits which contribute to overall profitability.



**2023 Sydney Supreme Hereford Exhibit , Truro Sherlock – Sire Yalgoo Peacemaker**

# TEMPERAMENT

In a recent survey in the US, this was ranked as the most important genetic trait by US beef producers. Yalgoo has long had a reputation for breeding quiet cattle.

Yalgoo is one of the very few whiteface studs that measure temperament. This is done by an independent assessor. The importance of this is paramount. Your cattle will generally react differently around a new face. Your bull provider's cattle are used to him/her, however they won't be there on your farm to deal with the bull on a day to day basis. By getting an independent assessor to do this we are much more likely to pick up any aggressive stock before they leave the farm.

## PHENOTYPIC TRAITS

The phenotypic traits that Yalgoo select for are:

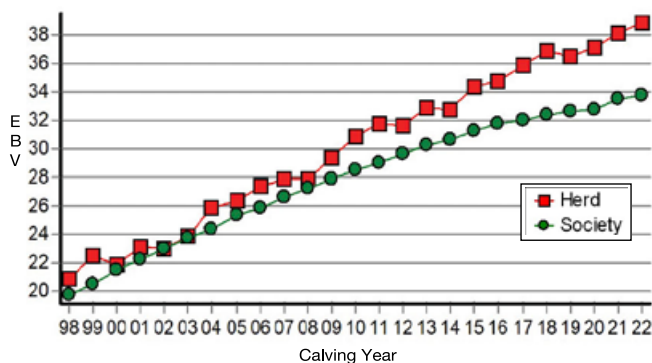
- Superior visual muscling
- Structural correctness
- Correct udder type
- Eye pigment and placement

## MATURITY TYPE

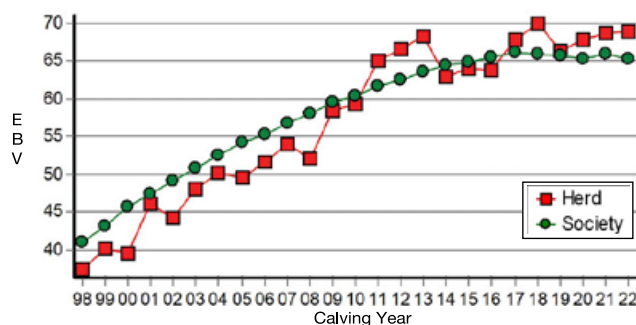
Maturity type is controlled both by genetic and environmental factors. We aim to produce frame 7 bulls with positive fat cover and a medium/early maturity pattern.

We find under high stocking rates, earlier maturing cattle are more versatile and marketable.

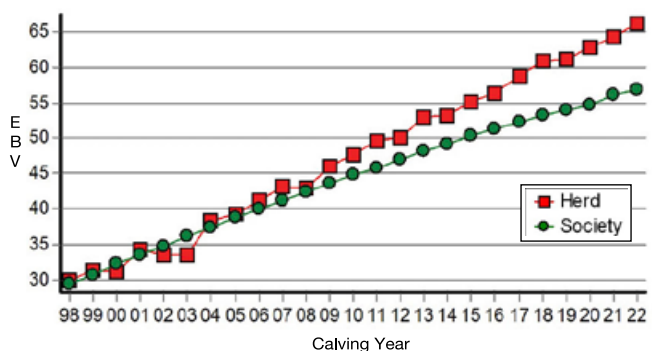
200 DAY GROWTH (kg)



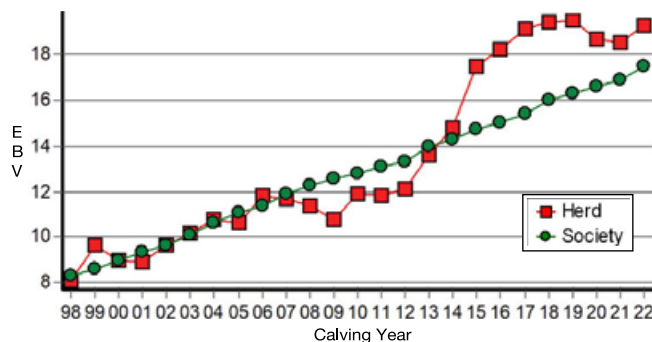
MATURE WEIGHT (kg)



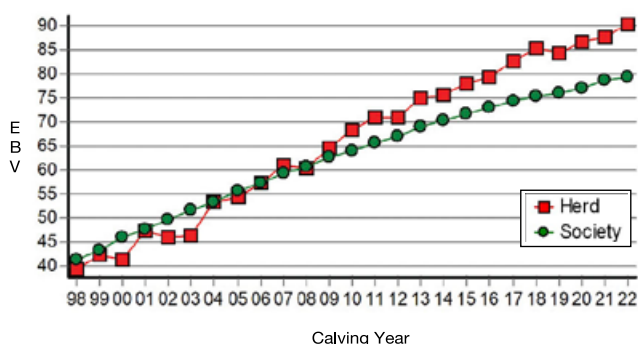
400 DAY WEIGHT (kg)



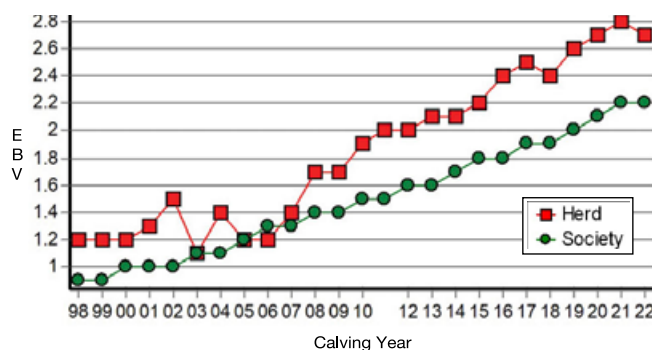
200 DAY MILK (kg)



600 DAY WEIGHT (kg)



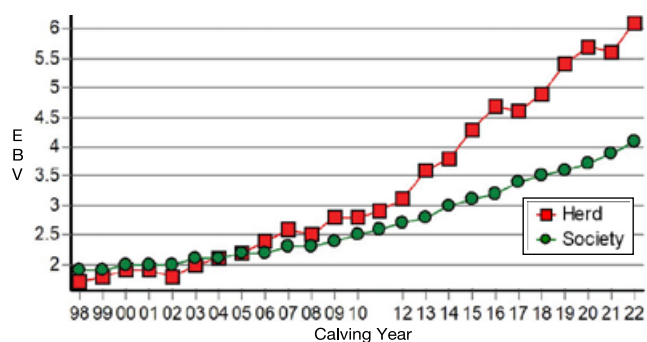
SCROTAL SIZE (cm)



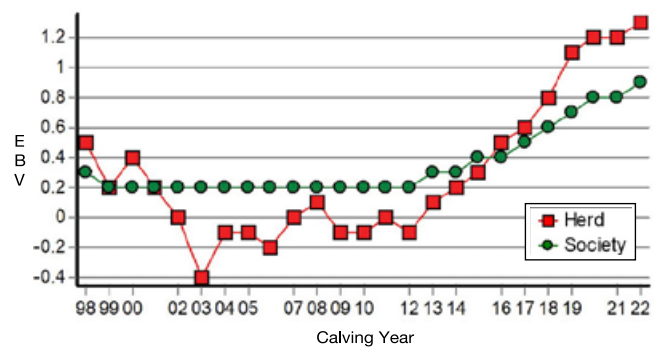




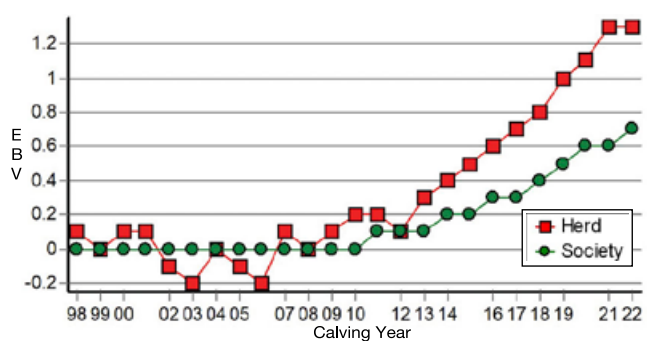
CARCASE EMA (sq.cm)



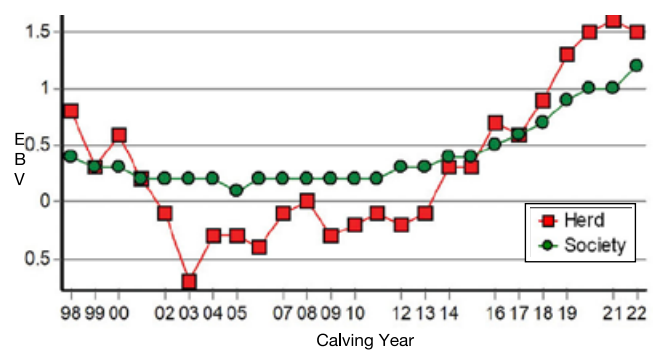
CARCASE RIB FAT (mm)



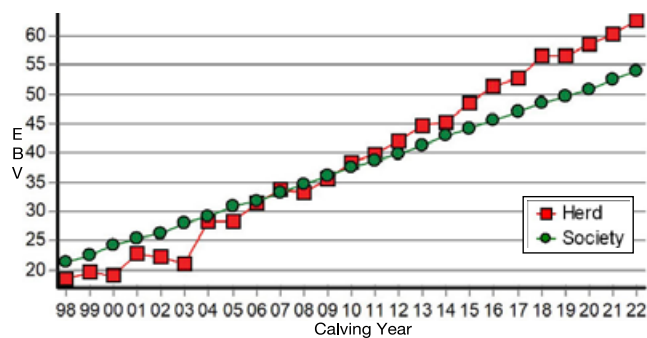
CARCASE IMF (%)



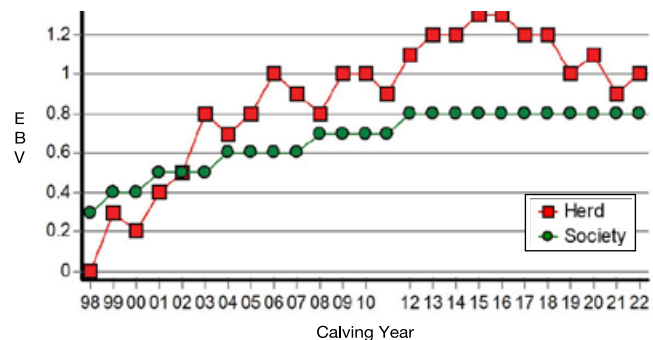
CARCASE RUMP FAT (mm)



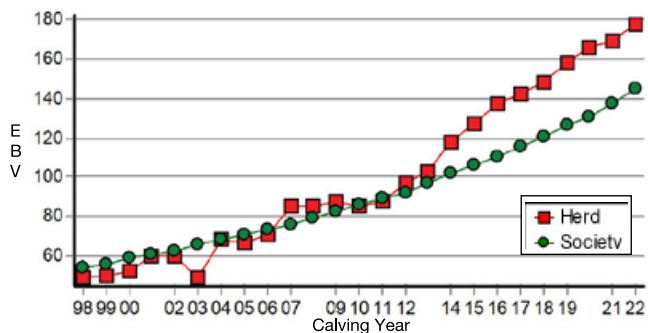
CARCASE WEIGHT (kg)



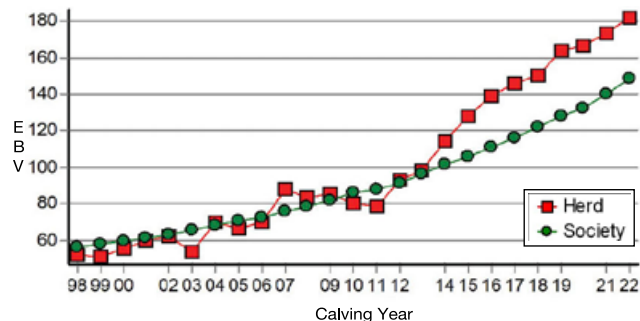
CARCASE RBY (%)



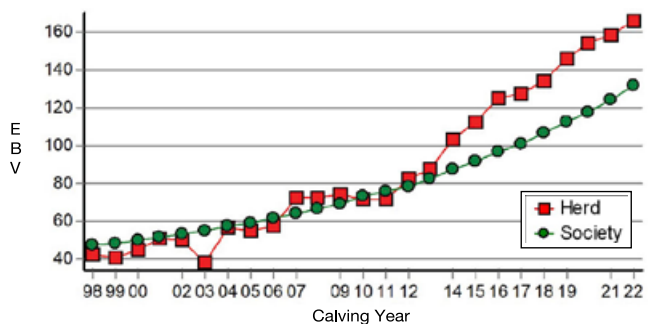
SOUTHERN SELF-REPLACING (\$)



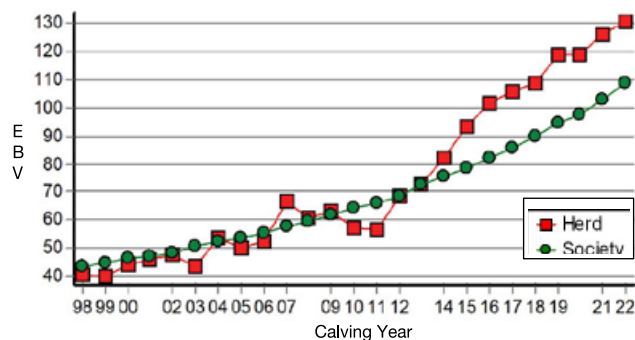
SOUTHERN BALDY MATERNAL (\$)



NORTHERN SELF-REPLACING (\$)



NORTHERN BALDY TERMINAL (\$)



**Yalgoo mixed age cows  
conceived at 95% in  
2019 during the worst  
drought on record**



## YALGOO QUALITY ASSURANCE

### DATA INTEGRITY

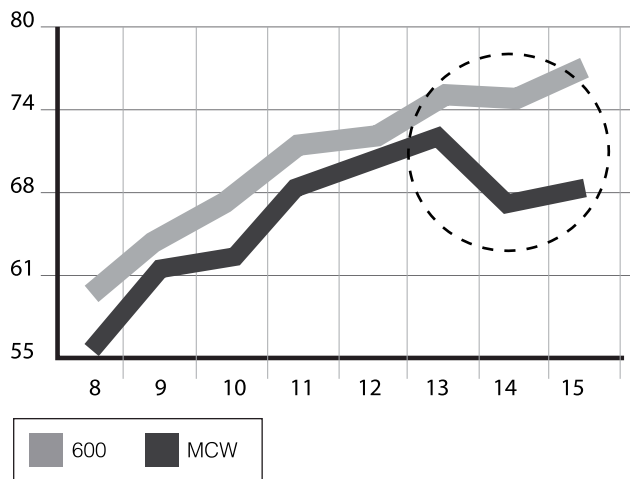
Yalgoo has a Breedplan completeness of recording rating of four and a half stars.

Our herd enjoys a high degree of performance predictability as a result of accurate BREEDPLAN EBV's. This is due to extensive testing in the following traits:

- ALL stud calves are weighed at Birth, increasing the accuracy of their birth weight EBV
- ALL stud bulls and heifers are weighed for 200, 400 and 600 day weight. Steers are weighed and recorded until they are sold. By weighing all animals we are increasing the information nucleus on each dam and creating greater herd linkage which increases BREEDPLAN accuracies
- ALL stud heifers and bulls (since 1972) have been scanned for EMA, fat depth and IMF (since 2000). Therefore our sale bulls have more accurate carcase EBV's and we are maximising the carcase information from our herd, allowing us to achieve more rapid genetic progress in carcase traits
- Mature cow weight is measured
- Independent phenotypic traits are measured including : Structure, Muscle scores & temperament
- Yalgoo was a co operator herd in the across breed NFI trial work to develop an EBV for Net Feed Intake. AGBU is currently making modifications to the NFI analysis
- By sourcing Yalgoo genetics you can be assured that any current/future economically important EBV will be measured with the greatest care and submitted correctly

### MANAGING YOUR YALGOO BULL

Appropriate nutrition and paddock size must be provided when the bull is to be used in a single sire mating situation. All bulls should be examined frequently during the joining period so that signs of injury or disease can be detected and treated immediately.



NJW Trust: Keystone Sire at Yalgoo

### MATURE COW WEIGHT

I have made special mention of this graph to highlight the importance of how mature cow weight effects stocking rate.

From 2009 to 2013 (circled area), MCW and 600 were increasing at the same rate. This is what you would expect when no selection pressure is being applied, as these traits are highly correlated.

From 2013 to 2015 we can see a distinctive gap open between these two traits. This gap reflects the selection pressure that has occurred on mature cow weight. The growth curve is being bent at 600 days and this has a pronounced affect on stocking rate. Importantly 600 day wt has not been compromised to achieve this result. This means there is no compromise in terms of income received on young sale stock as long as these stock are marketed before 600 days. However there is the ability to increase stocking rate as the MCW EBV has fallen by 8kgs.

## BEEF CLASS STRUCTURAL ASSESSMENT

Structural problems in cattle have a substantial effect on both the reproductive and growth performance of a beef herd. It is widely recognised that structural problems in sires have detrimental effects on conception rates, calving patterns and thus profitability. Similarly, females with inadequate structural characteristics are more prone to weaning lighter calves or conceiving later in the breeding season than their more functional counterparts. These structural problems are filtered through the supply chain resulting in reduced income for the producer, feedlot and thus reducing the overall productivity of the Australian Beef Industry.



Lot 6

Over the past decade, use of the Beef Class Structural Assessment System in the seedstock industry has produced a marked improvement in herds which have shown commitment to using the information appropriately. Through these dedicated breeders, there has been a flow on affect of structural improvement through out all sectors of the beef cattle industry.

## 2023 YALGOO SALE BULLS

The 2023 Yalgoo Sale Bulls have been independently structurally assessed to maximise the quality of stock on offer. Any animals deemed inadequate have been removed from the sale draft. The Yalgoo sale bulls were assessed by Ian Crawford on the 16/5/23 .

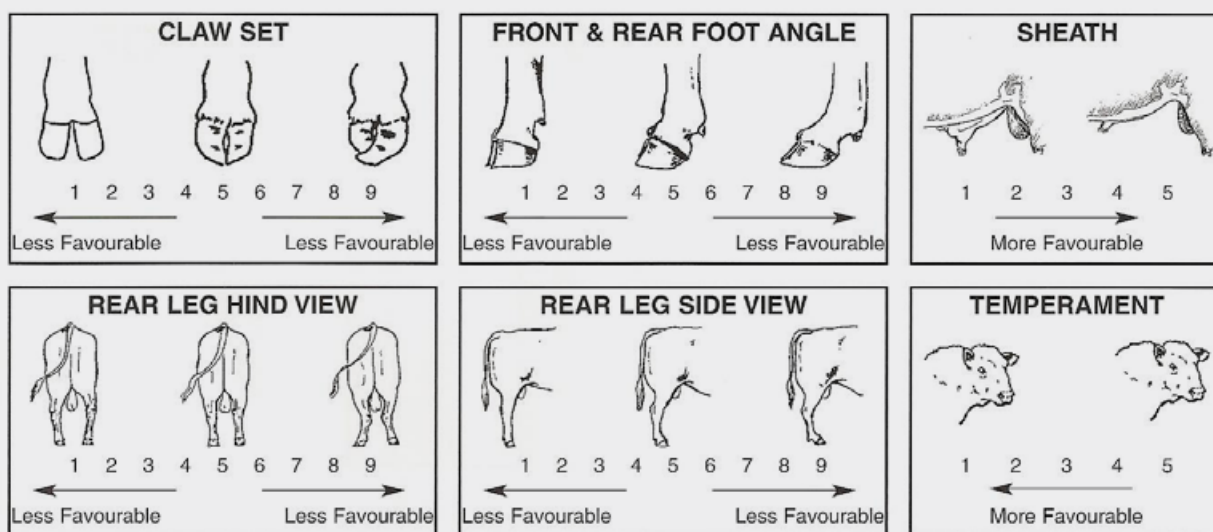
## HOW TO USE THE BEEF CLASS STRUCTURAL ASSESSMENT SYSTEM

The Beef Class Structural Assessment System uses a 1-9 scoring system;

- A score of 5 is ideal.
- A score of 4 or 6 shows slight variation from ideal, but this includes most animals. An animal scoring 4 or 6 would be acceptable in any breeding program.
- A score of 3 or 7 shows greater variation but would be acceptable in most commercial programs. However, seedstock producers should be vigilant and understand that this score indicates greater variation from ideal.
- A score of 2 or 8 are low scoring animals and should be looked closely before purchasing.
- A score of 1 or 9 should not be catalogued and are considered culls.

### Sheath, Eye and Temperament (1 - 5)

- A higher score indicates a tighter sheath and is more favourable
- A lower score indicates a quieter animal and is more favourable
- A higher score indicates a more favourable eye settin





# TECHNICAL

Only **GROUP BREEDPLAN EBV's with Accuracies (Acc)** can be validly compared between herds.

**Estimated Breeding Values (EBVS)** for the growth traits are calculated in kilograms. The EBV is the best estimate of an animal's genetic merit for that traits.

**Accuracies** are presented with every EBV and give an indication of the amount of information that has been used in the calculation of that EBV. The higher the accuracy the lower the likelihood of change in the animal's EBVs more information is analysed for that animal or its relatives.

**Birth Weight** - The lower the birth weight EBV, the lighter is the birth weight potential of the progeny.

**200 Day Weight** - Indicates the relative weight advantage of a sire 8-10 months of age.

**400 Day Weight** - Indicates the relative weight advantage of a sire at yearling age.

**600 Day Weight** - Indicates the relative weight advantage of a sire beyond yearling age. This EBV is important if selecting sires to breed steers for grain fed export markets.

**Genetic Milk** - Reflects the extra calf weight at weaning due to the genetic influence a sire has on his daughters milking and mothering ability.

**Gestation Length** - Lower (-) EBV's indicate easier calving and increased growth after birth.

**EMA** - Bulls with positive EBVs for this trait are expected to produce more muscular progeny than bulls with negative EBVs.

**Fat Depth** - Bulls with negative EBVs for this trait are expected to produce leaner progeny than bulls with positive EBVs.

**Intra-Muscular Fat Percentage** - Estimates the genetic difference in the percentage of intra-muscular fat at the 12th/13th rib site in a 300kg dressed carcass. Positive values are generally more favourable.

**Retail Beef Yield Percentage** - Represents total (boned out) meat yield as a percentage of a 300kg dressed carcass. A more positive EBV indicates higher percentage carcass yield.

**Scrotal Size** - This EBV is an indicator of male fertility in regards to semen quality and quantity. Higher EBVs indicate higher fertility potential of male progeny and is positively correlated to age of puberty in female progeny.

**Days to Calving (DC)** - Measures the time interval from the first exposure to a bull in paddock mating to when a cow calves. A negative EBV indicates a shorter interval and therefore higher fertility.

**Mature Cow Weight** - Is an estimate of the difference in cow weight at calf weaning time and is an indicator of mature cow weight and potential feed requirements.

**Carcass Weight** - Estimates the difference in carcass weight at a standard 650 days of age.

**Supermarket Index** - Estimates the genetic differences between animals in net profitability per cow joined for an example commercial herd targeting the domestic supermarket trade. Steers are either finished on grass or grain (e.g. 50-70 DAYS). Steers are assumed marketed at 450kgs live weight (250kg HSCW and 12mm P8 fat depth) at 17 months of age. Daughters are retained for breeding. In response to industry feedback regarding eating quality and tenderness, a small premium has been placed on marbling.

**Grass Fed Steer Index** - Estimates the genetic differences between animals in net profitability per cow joined for an example commercial herd targeting grass finished steers. Steers are assumed marketed at 600kg live weight (330 HSCW and 8mm P8 fat depth) at 23 months of age. Daughters are retained for breeding. In response to industry feedback regarding eating quality and tenderness, a small premium has been placed on marbling.

**Grain Fed Steer Index** - Estimates the genetic differences between animals in net profitability per cow joined for an example commercial herd targeting pasture grown steers with a 125 day feedlot finishing period for the grain fed markets. Steers are assumed marketed at 600kg live weight (330 HSCW and 20mm P8 fat depth) at 20 months of age. Daughters are retained for breeding. There is a significant premium if steers reach a marbling score of 2 or greater.

**EU Index** - Estimates the genetic differences between animals in net profitability per cow joined for an example commercial herd targeting pasture finished steers for the EU markets. Steers are assumed marketed at 620kg live weight (330 HSCW and 14mm P8 fat depth) at 24 months of age. Daughters are retained for breeding. There is no marbling requirement.





# KEY CONTRIBUTORS



**TH Masterplan 183**  
**Sire of special lot 16**



**Wirruna Nixon**

- **Moderate Powerhouse**
- **Top 5% Growth Traits EMA IMF and all indexes**
- **Sire of 9 sale bulls**





**NJW Trust**  
**Breed legend, influential sire of dams in 2023 sale**



**Yalgoo Blush A036**  
**In 40% of the offering's pedigrees**

# STRUCTURAL SCORES

Lot No.		FC	RC	FA	RA	RS	RH	Sheath	Temp.	Test. Tone	Eye	MSC
1	SODS069	6	5	6	6	7	6	4	1	1	4	C
2	SODS048	6	5	6	6	6	5	4	1	1	3	C
3	SODS137	6	6	6	6	5	5	3	1	1	3	C
4	SODS029	6	5	5	7	6	5	4	1	1	4	C+
5	SODS135	6	6	5	6	5	6	5	1	1	3	C
6	SODS288	5	7	6	6	5	5	5	1	1	4	B-
7	SODS022	6	5	6	6	6	5	5	1	1	3	B-
8	SODS264	6	6	6	6	6	5	4	1	1	4	C
9	SODS006	7	5	5	6	5	5	5	1	1	4	C
10	SODS210	6	5	5	5	5	5	4	1	1	5	C+
11	SODS032	6	6	5	5	5	5	5	1	1	4	C+
12	SODS196	5	5	5	5	6	5	4	1	1	5	C+
13	SODS141	6	5	5	5	5	5	3	1	1	5	C
14	SODS192	5	5	6	5	5	5	4	1	1	5	C+
15	SODS194	6	5	5	6	6	6	4	1	1	4	C
16	SODS159	6	5	5	6	5	5	3	1	1	4	C+
17	SODS012	6	5	5	6	6	6	5	1	1	4	C+
18	SODS215	6	5	6	5	6	5	5	1	1	5	C+
19	SODS035	5	5	5	6	6	6	5	1	1	4	C+
20	SODS216	5	5	5	5	5	5	3	1	1	4	C+
21	SODS267	4	5	6	5	6	5	4	2	1	4	C
22	SODS243	4	5	5	5	6	5	4	1	1	4	C
23	SODS091	6	5	5	5	5	6	4	1	1	4	C+
24	SODS140	5	5	5	5	6	6	5	1	1	4	C
25	SODS143	5	5	5	5	6	6	3	1	1	4	C
26	SODS232	4	5	5	5	5	6	5	1	1	4	C+
27	SODS116	6	4	5	5	6	6	5	1	1	4	C
28	SODS223	6	5	5	5	6	6	4	1	1	4	C
29	SODS241	6	5	5	5	5	5	4	1	1	4	C+
30	SODS166	6	5	5	5	6	5	4	1	1	4	C
31	SODS179	5	5	5	5	5	5	4	1	1	3	C+
32	SODS239	4	4	5	5	6	5	4	1	1	4	C+
33	SODS265	6	5	5	6	6	4	4	1	1	4	C+
34	SODS080	5	5	5	5	5	5	5	1	1	5	C+
35	SODS024	6	5	5	5	6	4	5	1	1	5	C
36	SODS190	5	5	5	6	5	5	4	2	1	5	C
37	SODS261	5	5	5	5	5	5	3	1	1	5	C+
38	SODS213	6	4	5	5	6	4	4	4	1	5	C+
39	SODS056	4	5	5	5	5	5	5	1	1	4	C+
40	SODS130	6	5	5	6	5	6	3	1	1	5	C+







# Yalgoo/Ivy Bank Sale Bulls 2023

## Yalgoo - EBV Summary June Run 2023

LOT	INDENT	SIRE	H/P GENO	DOB	CEDIR	CE DRT	GL	BW	200	400	600	MCW
1	SODS069	SODQ250	PP	4/09/2021	10.7	5.4	-3.5	0.7	35	67	83	70
2	SODS048	PROMISE	PP	24/08/2021	4.2	3.6	2.3	2.6	43	79	105	67
3	SODS137	VAL	PP	2/10/2021	6.1	-0.5	0.8	3.8	44	77	100	58
4	SODS029	MATTY	PP	21/08/2021	7.1	3.2	-3.2	2.6	43	78	106	92
5	SODS135	MASTER	PP	1/10/2021	2.1	3.2	-1.5	4.2	47	82	109	81
6	SODS288	SODQ004	PP	1/09/2021	8.5	3.8	-6	2.3	39	62	85	71
7	SODS022	MATTY	PP	19/08/2021	8.7	5.2	-1.2	1	33	58	76	49
8	SODS264	SODQ107	PP	4/11/2021	7.6	3	0.5	1.3	36	61	83	52
9	SODS006	TRUST	PP	14/08/2021	10.8	9.4	-1.6	0.6	37	64	79	59
10	SODS210	NIXON	PP	16/10/2021	-3.9	-1.3	-2.3	5.4	47	73	97	73
11	SODS032	JUSTIN	PP	21/08/2021	0	5.7	-2	7.6	50	86	120	115
12	SODS196	NIXON	PP	14/10/2021	-1	1.7	0	6.4	47	76	108	93
13	SODS141	STARTER	PP	2/10/2021	5.7	7.2	0.2	3.2	37	58	78	50
14	SODS192	SODQ006	PP	12/10/2021	-3	2.9	-4.1	5.7	44	72	94	77
15	SODS194	NIXON	PP	14/10/2021	4.3	3.9	-0.7	2.6	38	65	83	60
16	SODS159	MASTER	PP	6/10/2021	-2.1	-2.5	2.3	4.5	44	77	97	70
17	SODS012	MATTY	PP	16/08/2021	5.7	3.5	-4.1	4.7	45	78	110	94
18	SODS215	SODQ107	PP	17/10/2021	3.7	2	-2.4	5.3	44	79	112	103
19	SODS035	PROMISE	PP	22/08/2021	6.7	2.3	0	1.3	36	63	77	39
20	SODS216	NIXON	PP	17/10/2021	7.9	5.6	-0.8	1.6	33	58	75	47
21	SODS267	SODQ107	PP	5/11/2021	9.5	7.5	-2.6	-0.4	27	63	75	47
22	SODS243	LEN	HPf	25/10/2021	-2.7	0	1.5	6.2	41	71	106	91
23	SODS091	PEACE	PP	25/09/2021	3.9	6.3	-5.8	4.1	46	82	114	97
24	SODS140	STARTER	PP	2/10/2021	0.8	3.6	-1.1	4.6	36	54	77	51
25	SODS143	ENDURE	HPC	3/10/2021	10.1	9	1.7	1.3	35	65	87	53
26	SODS232	SODQ047	HPC	22/10/2021	3.2	3.4	-3.3	2.8	35	61	90	78
27	SODS116	MASTER	PP	29/09/2021	11.2	5.1	0.3	-0.1	34	62	74	56
28	SODS223	NIXON	PP	19/10/2021	0.7	2.1	0.6	3.9	41	69	93	68
29	SODS241	NIXON	PP	26/10/2021	1.5	3.1	3.2	6.1	45	77	105	77
30	SODS166	NIXON	PP	7/10/2021	-1.4	0.2	-1	4.3	39	60	83	66
31	SODS179	MACE	PP	11/10/2021	2.6	3.6	-2	7.6	45	77	115	118
32	SODS239	MACE	PP	24/10/2021	3.5	3.5	-0.4	4.1	38	59	79	53
33	SODS265	MACE	PP	5/11/2021	0.2	2.9	-0.1	6.4	43	66	94	68
34	SODS080	SODQ032	PP	11/09/2021	1.1	1.3	-2.6	6.6	47	80	115	104
35	SODS024	TRUST	PP	19/08/2021	5.9	7.7	-0.3	4.2	45	78	101	91
36	SODS190	NIXON	HPC	13/10/2021	-5.4	1.4	1	5.9	47	77	102	82
37	SODS261	NIXON	PP	2/11/2021	-7	-0.4	1.7	7.9	46	76	106	98
38	SODS213	SODQ047	PP	17/10/2021	-1.5	1.1	-0.7	3.9	31	42	60	25
39	SODS056	SODQ032	PP	27/08/2021	6.4	5.9	-7.8	2.1	37	60	84	61
40	SODS130	SODQ006	HPC	1/10/2021	-3	0.9	-4.3	5.7	43	68	96	80
Yalgoo Average					3.2	3.4	-1.2	3.9	41	69	93	72
Breed Average					2.5	2.1	-0.7	4.0	33	55	78	66

## Ivy Bank - EBV Summary June Run 2023

41	AHGS021	QUEST	N/T	15/09/2021	0.2	1.6	1.6	5.6	36	64	90	75
42	AHGS029	JET	N/T	22/09/2021	2.7	5.5	0.2	5	38	59	81	71
43	AHGS019	JET	N/T	10/09/2021	4.7	5.9	-0.1	3.5	35	55	77	55
44	AHGS035	JET	N/T	3/10/2021	3.5	5.3	0.6	4.4	31	48	65	52
45	AHGS010	JET	N/T	17/04/2021	4.3	5.8	0.9	4.0	31	49	67	57
46	AHGS040	JET	N/T	12/10/2021	1.7	4.6	0.4	4.2	34	52	75	63



## Top 30% of Hereford 2020 Drop

## Top 10% of Hereford 2020 Drop

MILK	SC	DC	CWT	EMA	RIB	RUMP	RBY	IMF	STH SR	NTH SR	SBMI	NTH SR
21	3.7	-2.5	62	6.6	0.6	0.5	1	1.4	\$166	\$159	\$195	\$154
20	6	-6.9	75	5.5	2	2.8	0.5	1.9	\$233	\$222	\$225	\$154
21	2.9	-2.4	68	7.8	1.6	1.8	0.8	2.4	\$209	\$194	\$216	\$160
18	3.6	-3.5	75	5.7	1.4	1.9	0.8	2.2	\$207	\$199	\$220	\$169
20	3.1	-3.6	72	5.6	0.6	0	1.8	1.4	\$210	\$194	\$208	\$148
14	2.7	-3.9	64	5.4	2	2.7	0.4	1.7	\$181	\$180	\$194	\$148
19	3.8	-3.6	55	5.3	2	2.8	0.4	2.3	\$182	\$179	\$196	\$145
24	0.8	-1.5	69	5.4	1.4	1.9	0.8	1.4	\$170	\$160	\$189	\$142
19	2	-4.4	60	5.3	2	2.4	0.2	1.5	\$183	\$179	\$205	\$150
19	4.3	-5.1	70	6.2	2.4	3.8	0	2	\$173	\$164	\$154	\$109
12	4.2	-4.6	78	5.1	0.1	-0.1	1.6	0.8	\$204	\$186	\$197	\$138
21	3.1	-4	71	5.9	1.6	2.8	0.2	1.4	\$177	\$161	\$172	\$124
23	0.8	-2.4	60	5.3	2	2.4	-0.1	1.2	\$157	\$144	\$171	\$120
12	2.9	-2.9	62	5.3	1.1	1.3	1	1.5	\$164	\$154	\$152	\$106
24	3.7	-3.7	63	6.1	1.7	2.4	0.5	2	\$170	\$161	\$176	\$131
18	2.8	-2.8	64	6.4	1.9	2.1	0.5	1.6	\$167	\$153	\$157	\$114
20	4.3	-2.4	71	4.7	1.4	1.7	0.4	2.1	\$197	\$182	\$211	\$160
27	4.3	-3.3	80	6.8	0.8	1.1	1.1	1.1	\$182	\$163	\$194	\$150
28	4.7	-5.4	56	3.6	2.6	3.6	-1.3	1.9	\$169	\$154	\$176	\$128
19	3.8	-5.8	57	5.3	2.3	3.7	0.1	1.4	\$183	\$179	\$188	\$132
22	1.9	-4.2	67	7.6	2.3	3.4	1.2	1.7	\$193	\$193	\$209	\$152
15	3.2	-4	66	5.8	1.4	1.9	1.1	1.2	\$178	\$163	\$165	\$116
18	5.1	-6.1	81	6.7	1.4	2.1	1.2	1.2	\$226	\$217	\$224	\$158
16	3	-2.5	53	6.4	1.5	1.9	1	1.2	\$151	\$142	\$148	\$101
26	2.4	-4.3	68	6.8	1.3	0.9	1.4	1.3	\$204	\$190	\$222	\$157
26	1.8	-2.4	70	7.5	-0.3	-0.1	3.3	0.4	\$165	\$155	\$175	\$132
19	2.6	-5	54	5.3	1.5	1.2	0.6	1.1	\$168	\$163	\$188	\$144
27	2.9	-3.6	63	4.5	1.6	2.4	-0.1	1.9	\$165	\$146	\$165	\$120
22	3.2	-2.6	67	6.1	1.6	2.4	0.4	1.8	\$189	\$172	\$191	\$136
18	3.5	-2.3	57	4.2	1.5	1.8	0	1.7	\$135	\$123	\$132	\$98
17	1.4	-5.3	71	7.8	0.7	1.2	2.1	0.5	\$197	\$182	\$197	\$145
21	2.8	-5.4	56	7.3	1.8	2.3	1.3	1.1	\$174	\$166	\$171	\$120
19	3.4	-4.7	61	9.1	1.1	1.2	2.3	1	\$188	\$177	\$178	\$122
21	3.2	-1.9	74	6.5	0.8	0.7	1.4	1.4	\$183	\$164	\$188	\$143
15	1.8	-3.3	75	5.7	0.9	0.8	0.9	1.2	\$193	\$183	\$204	\$149
17	4.4	-4.6	68	4.7	0.7	1.1	1.5	0.6	\$170	\$157	\$149	\$99
16	2.7	-2.2	62	4.5	1.2	1.3	0.2	1.2	\$139	\$117	\$124	\$89
19	2.5	-3	34	5.7	2.3	3.6	0.7	1.4	\$129	\$124	\$119	\$77
11	2.8	-1.4	59	5.7	1.6	1.5	0.4	2	\$177	\$172	\$190	\$138
13	3	-1.9	61	5.2	1.1	1.6	1	1.4	\$157	\$147	\$148	\$106
19	3.1	-3.6	65	5.9	1.4	1.9	0.8	1.5	\$179	\$168	\$182	\$132
17	2.1	-3.0	51	3.8	0.8	1.0	0.8	0.6	\$132	\$119	\$133	\$98

## Top 30% of Hereford 2020 Drop

## Top 10% of Hereford 2020 Drop

17	1.6	-3.0	57	5.3	1.4	1.6	0.6	1.1	\$153	\$135	\$150	\$107
16	2.3	-3.1	51	3.4	0.4	0.2	1.1	1.1	\$148	\$136	\$152	\$110
24	2.4	-3.9	52	3.3	1.3	1.3	0.6	1.2	\$154	\$138	\$162	\$115
15	2	-3.4	39	3	0.5	0.4	0.9	1.0	\$131	\$121	\$135	\$96
12	1.7	-3.1	42	3.1	0.7	0.6	0.8	1.0	\$135	\$127	\$141	\$101
16	2.2	-2.4	47	2.6	0.2	-0.1	0.9	0.9	\$132	\$117	\$135	\$96

Lot 1

YALGOO STAND ALONE S069 (PP)

Ident: SODS069

Born: 04/09/2021

Eye Pigment: 100/100

ALLENDAL E ANZAC E114 (PP)

WIRRUNA MATTY M288 (AI) (ET) (PP)

WIRRUNA CIRCLE H13 (AI) (PP)

Sire: YALGOO NEWMARKET Q250 (AI) (P)

NJW 73S M326 TRUST 100W ET (IMP USA) (ET) (P)

YALGOO BELLE KASHMIR L011 (AI) (P)

YALGOO BELLE KASHMIR E212 (P)

EFBEEF TFL U208 TESTED X651 (P)

EFBEEF BR VALIDATED B413 (IMP USA) (PP)

EFBEEF 4R THYRA Y865 (P)

Dam: YALGOO BLUSH Q005 (AI) (P)

ELITE 4110 H297 (AI) (PP)

YALGOO BLUSH N088 (AI) (ET) (P)

YALGOO BLUSH J102 (AI) (PP)

\$ Index Values

Southern Self Replacing: +\$166

Northern Self Replacing: +\$159

Southern Baldy Maternal: +\$195

Northern Baldy Terminal: +\$154

Purchaser: .....

Price \$: .....

June 2023 Hereford BREEDPLAN																
CE (DIR)	CE (DTRS)	GL	BW	200	400	600	MCW	Milk	SS	DC	Cwt	EMA	Rib	RUMP	RBY%	IMF%
+10.7	+5.4	-3.5	+0.7	+35	+67	+83	+70	+21	+3.7	-2.5	+62	+6.6	+0.6	+0.5	+1.0	+1.4
39%	31%	63%	70%	64%	64%	65%	59%	51%	75%	35%	53%	46%	50%	52%	44%	52%

Traits Observed: BWT,200WT,400WT,600WT,SS,FAT,EMA,IMF,Genomics      Parent Verification: Sire: Verified, Dam: Not Verified

Notes: Multi purpose sire that was used over commercial cows as a yearling. Superb balance of figures in an attractive phenotype with a "who's who" of proven, performers populating his pedigree. S069 was out of a cracking Validated heifer with an ideal udder. He'll add value at all levels of the production chain. Top end fertility with 10% CED, GL, BW and SC. Strong carcass: Top 10% EMA and 15% IMF. High profit top 10% SBMI and NBMI indexes. Market/ system suitability: SM, F, MSA, BB MP

Lot 2

YALGOO SHINTO S048 (PP)

Ident: SODS048

Born: 24/08/2021

Eye Pigment: 100/100

WIRRUNA HARTWIG H297 (P)

WIRRUNA KALIMNA K326 (PP)

WIRRUNA CORA H303 (AI) (ET) (P)

Sire: WIRRUNA PROMISE P239 (AI) (PP)

WIRRUNA HERNANDO H47 (AI) (P)

WIRRUNA CIRCLE M183 (AI) (P)

WIRRUNA CIRCLE K95 (AI) (P)

OTAPAWA SPARK 3060 (IMP NZL) (AI) (ET) (P)

TOBRUK LENNOX (ET) (PP)

PINE HILL MARITANA A619 (AI) (P)

Dam: YALGOO LIQUER Q235 (P)

NJW 73S M326 TRUST 100W ET (IMP USA) (ET) (P)

YALGOO K401 (AI) (P)

YALGOO LIQUER Z147 (P)

\$ Index Values

Southern Self Replacing: +\$233

Northern Self Replacing: +\$222

Southern Baldy Maternal: +\$225

Northern Baldy Terminal: +\$154

Purchaser: .....

Price \$: .....

June 2023 Hereford BREEDPLAN																
CE (DIR)	CE (DTRS)	GL	BW	200	400	600	MCW	Milk	SS	DC	Cwt	EMA	Rib	RUMP	RBY%	IMF%
+4.2	+3.6	+2.3	+2.6	+43	+79	+105	+67	+20	+6.0	-6.9	+75	+5.5	+2.0	+2.8	+0.5	+1.9
45%	37%	65%	73%	68%	68%	70%	63%	54%	76%	40%	58%	52%	56%	59%	51%	58%

Traits Observed: CE,BWT,200WT,400WT,600WT,SS,FAT,EMA,IMF,Genomics      Parent Verification: Sire: Verified, Dam: Not Verified

Notes: Shinto brings together the things that you need and those that you like. Very sound, heifers calf that is the highest indexing bull in the sale. Joined to stud heifers for 4 weeks. Top 10% growth - 200, 400, 600. Exceptional fertility- top 1% SC, DC. Strong carcass - Top 15% EMA Top 5% IMF. Market/ system suitability: MSA, F, HGS, BB, MP

Lot 3

YALGOO SHUTTLE S137 (AI) (PP)

Ident: SODS137

Born: 02/10/2021

Eye Pigment: 100/100

EFBEEF FOREMOST U208 (IMP USA) (PP)

EFBEEF TFL U208 TESTED X651 (P)

EFBEEF P606 MABEL R415 (P)

Sire: EFBEEF BR VALIDATED B413 (IMP USA) (PP)

MSU TCF REVOLUTION 4R (IMP USA) (PP)

EFBEEF 4R THYRA Y865 (P)

EFBEEF N014 THYRA S645 (P)

ALLENDAL E ANZAC E114 (PP)

INJEMIRA ANZAC H006 (PP)

INJEMIRA MARINDA B028 (AI) (P)

Dam: YALGOO SHANGRI LA P086 (AI) (P)

VALMA MAXIMUS (AI) (P)

YALGOO SHANGRI LA F123 (P)

YALGOO SHANGRI LA C204 (P)

\$ Index Values

Southern Self Replacing: +\$209

Northern Self Replacing: +\$194

Southern Baldy Maternal: +\$216

Northern Baldy Terminal: +\$160

Purchaser: .....

Price \$: .....

June 2023 Hereford BREEDPLAN																
CE (DIR)	CE (DTRS)	GL	BW	200	400	600	MCW	Milk	SS	DC	Cwt	EMA	Rib	RUMP	RBY%	IMF%
+6.1	-0.5	+0.8	+3.8	+44	+77	+100	+58	+21	+2.9	-2.4	+68	+7.8	+1.6	+1.8	+0.8	+2.4
46%	36%	75%	73%	69%	69%	71%	64%	59%	76%	37%	60%	53%	57%	59%	52%	58%

Traits Observed: GL,BWT,200WT,400WT,600WT,SS,FAT,EMA,IMF,Genomics      Parent Verification: Sire: Verified, Dam: Not Verified

Notes: A bull that puts it all together, with the bonus of having a proven outcross sire. His sire has certainly been Validated (with over 1000 progeny) in the US as a bull that will add tremendous carcass (double breed average for EMA and TEN TIMES breed average for marbling) and 'sleep easy calving'. However his legacy will be his hugely effecient daughters. Moderate in frame with tidy udders, their ability to wean a huge percentage of their body weight is unmatched. Well made with plenty of capacity. He is unique as he puts together calving ease, growth, muscle and IMF with a great look and enough grunt. Looks to be a sire that should have strong industry demand; with his great look, high profit credentials and next level carcass. Semen to be retained. S137 was joined to stud heifers for 4 weeks. High growth - Top 10% 200, 400, 600, Moderate daughters, Great carcass - Top 1% EMA and IMF, Hig



**Lot 4 YALGOO SQUATTER S029 (AI) (PP)**

Ident: SODS029

Born: 21/08/2021

Eye Pigment: 100/100

ALLEDALE YACKA (AI) (P)  
 ALLEDALE ANZAC E114 (PP)  
 ALLEDALE DAWN B22 (AI) (ET) (P)  
 Sire: **WIRRUNA MATTY M288 (AI) (ET) (PP)**  
 ELITE 4110 E212 (AI) (PP)  
 WIRRUNA CIRCLE H13 (AI) (PP)  
 WIRRUNA CIRCLE F31 (AI) (PP)  
 OTAPAWA SPARK 3060 (IMP NZL) (AI) (ET) (P)  
 TOBRUK LENNOX (ET) (PP)  
 PINE HILL MARITANA A619 (AI) (P)  
 Dam: **YALGOO DONNA BELLA Q230 (P)**  
 TH 122 711 VICTOR 719T (IMP USA) (P)  
 YALGOO DONNA BELLA J082 (AI) (P)  
 YALGOO DONNA BELLA F241 (P)

**\$ Index Values**

Southern Self Replacing: +\$207  
 Northern Self Replacing: +\$199  
 Southern Baldy Maternal: +\$220  
 Northern Baldy Terminal: +\$169

Purchaser: .....

Price \$: .....

June 2023 Hereford BREEDPLAN																
CE (DIR)	CE (DTRS)	GL	BW	200	400	600	MCW	Milk	SS	DC	Cwt	EMA	Rib	RUMP	RBY%	IMF%
+7.1	+3.2	-3.2	+2.6	+43	+78	+106	+92	+18	+3.6	-3.5	+75	+5.7	+1.4	+1.9	+0.8	+2.2
54%	47%	74%	73%	70%	69%	70%	65%	61%	68%	45%	62%	56%	60%	62%	54%	61%

Traits Observed: GL,CE,BWT,200WT,400WT,600WT,SS,FAT,EMA,IMF,Genomics

Parent Verification: Sire: Verified, Dam: Not Verified

**Notes:** High calving ease does not often come with this muscle expression. A heifer's calf with roundness and quality. S029 is really bold in his shape and reminds me of his maternal sire Lennox. Another sire that gives you the aesthetics that you like with the balanced performance that is needed to breed profitable cattle. That rare bull that gives everything a lift without costing you anything. S029 had a six week joining with stud cows. High fertility - Top 25% CE, top 15% GL, top 10% SC, Top end growth - Top 10% 200 400 600, Great carcass - Top 15% EMA top 5% IMF, Huge profit Top 5% Indexes. Market/ system suitability: MSA F SM HGS BB MP

**Lot 5 YALGOO SATURN S135 (AI) (PP)**

Ident: SODS135

Born: 01/10/2021

Eye Pigment: 100/100

SCHU-LAR ON TARGET 22S (IMP USA) (ET) (P)  
 KCF BENNETT STRATEGY Z303 ET (P)  
 KCF MISS REVOLUTION X338 (ET) (P)  
 Sire: **TH MASTERPLAN 183F (IMP USA) (PP)**  
 FTF PROSPECTOR 145Y (IMP USA) (P)  
 TH 512X 145Y DOMINETTE 57B (P)  
 TH 122 711 DOMINETTE 512X ET (P)  
 ARDO HUSTLER 4110 (IMP NZL) (P)  
 ELITE 4110 H297 (AI) (PP)  
 ELITE FAVOURITE 0219 C133 (AI) (P)  
 Dam: **YALGOO ZELDA P052 (AI) (P)**  
 YALGOO BOULDER Y056 (S)  
 YALGOO ZELDA E48 (AI) (P)  
 YALGOO ZELDA Y082 (P)

**\$ Index Values**

Southern Self Replacing: +\$210  
 Northern Self Replacing: +\$194  
 Southern Baldy Maternal: +\$208  
 Northern Baldy Terminal: +\$148

Purchaser: .....

Price \$: .....

June 2023 Hereford BREEDPLAN																
CE (DIR)	CE (DTRS)	GL	BW	200	400	600	MCW	Milk	SS	DC	Cwt	EMA	Rib	RUMP	RBY%	IMF%
+2.1	+3.2	-1.5	+4.2	+47	+82	+109	+81	+20	+3.1	-3.6	+72	+5.6	+0.6	+0.0	+1.8	+1.4
42%	29%	75%	73%	69%	68%	69%	62%	54%	67%	34%	57%	51%	55%	58%	48%	57%

Traits Observed: GL,BWT,400WT,Genomics

Parent Verification: Sire: Verified, Dam: Not Verified

**Notes:** A soft, wide based, moderate bull with a strong loin. I used S135 in herd over stud cows for 6 weeks to capture his balanced performance and gutsy phenotype. His sire TH Masterplan is the most exciting US bull I have used since NJW Endure. One of the early opportunities to purchase a good son of a bull that will more than likely be the next big thing. Top end growth - Top 5% 200, 400, 600. Good fertility - positive calving ease, Top 15% SC, Strong carcass - Top 15% EMA and IMF. Market/ system suitability: SM MSA H HGS BB

**Lot 6 YALGOO SURGE S288 (PP)**

Ident: SODS288

Born: 01/09/2021

Eye Pigment: 100/100

ALLEDALE ANZAC E114 (PP)  
 WIRRUNA MATTY M288 (AI) (ET) (PP)  
 WIRRUNA CIRCLE H13 (AI) (PP)  
 Sire: **YALGOO QUEST Q004 (AI) (PP)**  
 MATARIKI HOLY - SMOKE (IMP NZL) (P)  
 YALGOO RAINIE N058 (AI) (P)  
 YALGOO RAINIE F157 (AI) (P)  
 CHURCHILL KICKSTART 501C (IMP USA) (AI) (ET) (P)  
 YALGOO NAPIER N002 (AI) (PP)  
 YALGOO BLUSH L267 (ET) (P)  
 Dam: **YALGOO BETTE Q051 (P)**  
 YALGOO VICEROY E316 (ET) (PP)  
 YALGOO BETTE N090 (AI) (ET) (P)  
 YALGOO BETTE J209 (AI) (PP)

**\$ Index Values**

Southern Self Replacing: +\$181  
 Northern Self Replacing: +\$180  
 Southern Baldy Maternal: +\$194  
 Northern Baldy Terminal: +\$148

Purchaser: .....

Price \$: .....

June 2023 Hereford BREEDPLAN																
CE (DIR)	CE (DTRS)	GL	BW	200	400	600	MCW	Milk	SS	DC	Cwt	EMA	Rib	RUMP	RBY%	IMF%
+8.5	+3.8	-6.0	+2.3	+39	+62	+85	+71	+14	+2.7	-3.9	+64	+5.4	+2.0	+2.7	+0.4	+1.7
36%	31%	59%	66%	64%	64%	65%	57%	49%	63%	34%	53%	45%	51%	54%	44%	52%

Traits Observed: BWT,600WT(x)SS,FAT,EMA,IMF,Genomics

Parent Verification: Sire: Verified, Dam: Not Verified

**Notes:** Gun of a bull. This stud sire ticks a lot of boxes. Wide based, bold, tight sheath, soft, slick skin and plenty of volume. Surge is a heifer's calf we joined to heifer's for 4 weeks. This bull dominates the pen with his commanding phenotype. Such a relevant sire regardless of breed putting together IMF, EMA, capacity, B- muscling, balance and type. These are the things breeders are trying to put together and S288 does it. Awesome fertility - Top 30% or better for CEDIR, GL, BW, SC DC. Super carcass - Top 20% EMA, top 10% FAT IMF. High profit Top 10% NSR SBMI NBMI. Market/ system suitability: SM MSA F HGS BB W MP

Lot 7

YALGOO SCOUNDREL S022 (AI) (PP)

Ident: SODS022

Born: 19/08/2021

Eye Pigment: 100/100

ALLEDALE YACKA (AI) (P)

ALLEDALE ANZAC E114 (PP)

ALLEDALE DAWN B22 (AI) (ET) (P)

Sire: WIRRUNA MATTY M288 (AI) (ET) (PP)

ELITE 4110 E212 (AI) (PP)

WIRRUNA CIRCLE H13 (AI) (PP)

WIRRUNA CIRCLE F31 (AI) (PP)

KCF BENNETT 3008 M326 (P)

NJW 73S M326 TRUST 100W ET (IMP USA) (ET) (P)

NJW P606 72N DAYDREAM 73S (P)

Dam: YALGOO CHIQUITA Q116 (AI) (P)

WIRRUNA ECHUCA E99 (AI) (P)

YALGOO CHIQUITA M241 (P)

YALGOO CHIQUITA J253 (P)

\$ Index Values

Southern Self Replacing: +\$182

Northern Self Replacing: +\$179

Southern Baldy Maternal: +\$196

Northern Baldy Terminal: +\$145

Purchaser: .....

.....

Price \$: .....

June 2023 Hereford BREEDPLAN																
CE (DIR)	CE (DTRS)	GL	BW	200	400	600	MCW	Milk	SS	DC	Cwt	EMA	Rib	RUMP	RBY%	IMF%
+8.7	+5.2	-1.2	+1.0	+33	+58	+76	+49	+19	+3.8	-3.6	+55	+5.3	+2.0	+2.8	+0.4	+2.3
55%	49%	75%	73%	70%	69%	71%	67%	62%	77%	47%	62%	57%	60%	62%	56%	62%

Traits Observed: GL,CE,BWT,200WT,400WT,600WT,SS,FAT,EMA,IMF,Genomics

Parent Verification: Sire: Verified, Dam: Verified

Notes: A major focus for us has been putting together carcass quantity and quality. 85% of the catalogue are top 30% or better for both EMA and IMF. The final part of the equation is finding cattle that express muscle shape. This long, B- muscling, heifers calf is a prime example of our program in the catalogue. He tracks well, is wide based and very strong hip to pin. High fertility bull with a moderate hard working Trust dam. Top end fertility - Top 20% or better CE CEDRT, SC BW. Super carcass - Top 20% EMA top 1% IMF. Superior profit - Top 10% All indexes. Market/ system suitability: MSA F SM BB MP

Lot 8

YALGOO PREACHER S264 (PP)

Ident: SODS264

Born: 04/11/2021

Eye Pigment: 100/100

KOANUI UNANIMOUS 0408 (P)

KOANUI TECHNO 3062 (IMP NZL) (PP)

KOANUI BLUSH 6455 (P)

Sire: YALGOO PRECISION Q107 (AI) (PP)

NJW 73S M326 TRUST 100W ET (IMP USA) (ET) (P)

YALGOO K400 (AI) (P)

YALGOO LIQUER Z147 (P)

MATARIKI HOLY - SMOKE (IMP NZL) (P)

YALGOO BANDIT J079 (AI) (P)

YALGOO BETTE E235 (P)

Dam: YALGOO ZELDA L039 (P)

YALGOO ZED F190 (P)

YALGOO ZELDA J273 (P)

YALGOO ZELDA F165 (P)

\$ Index Values

Southern Self Replacing: +\$170

Northern Self Replacing: +\$160

Southern Baldy Maternal: +\$189

Northern Baldy Terminal: +\$142

Purchaser: .....

.....

Price \$: .....

June 2023 Hereford BREEDPLAN																
CE (DIR)	CE (DTRS)	GL	BW	200	400	600	MCW	Milk	SS	DC	Cwt	EMA	Rib	RUMP	RBY%	IMF%
+7.6	+3.0	+0.5	+1.3	+36	+61	+83	+52	+24	+0.8	-1.5	+69	+5.4	+1.4	+1.9	+0.8	+1.4
41%	34%	60%	70%	65%	64%	66%	59%	53%	73%	37%	54%	46%	51%	54%	46%	52%

Traits Observed: BWT,200WT,400WT,600WT,SS,FAT,EMA,IMF,Genomics

Parent Verification: Sire: Verified, Dam: Not Verified

Notes: This stylish, homozygous poll all rounder was used over commercial cows. Really soft bull who was one of the highest gaining bulls at weaning and screams MSA grading. His dam is one of our most consistent performers and always weans one of the highest gainers. Good calving ease - Top 20% CE and BW. High milk - top 5%. Consistent carcass- top 30% or better EMA FAT IMF Market/ system suitability: SM MSA F BB W MP

Lot 9

YALGOO SATYR S006 (AI) (PP)

Ident: SODS006

Born: 14/08/2021

Eye Pigment: 100/100

NJW 73S M326 TRUST 100W ET (IMP USA) (ET) (P)

ELITE TRUST K215 (AI) (S)

ELITE RUTH 0219 D163 (AI) (P)

Sire: GLENTREVOR TRUST N909 (AI) (PP)

SOUTH BUKALONG WALLACE 2 (P)

GLENTREVOR SIRIKIT J504 (AI) (P)

GLENTREVOR SIRIKIT F252 (P)

KCF BENNETT ENCORE Z311 (ET) (PP)

NJW 79Z Z311 ENDURE 173D (IMP USA) (ET) (PP)

BW 91H 100W RITA 79Z (ET) (P)

Dam: YALGOO TIA MARIA Q105 (AI) (P)

YALGOO BREAK OUT G075 (AI) (P)

YALGOO TIA MARIA J208 (P)

YALGOO TIA MARIA E220 (P)

\$ Index Values

Southern Self Replacing: +\$183

Northern Self Replacing: +\$179

Southern Baldy Maternal: +\$205

Northern Baldy Terminal: +\$150

Purchaser: .....

.....

Price \$: .....

June 2023 Hereford BREEDPLAN																
CE (DIR)	CE (DTRS)	GL	BW	200	400	600	MCW	Milk	SS	DC	Cwt	EMA	Rib	RUMP	RBY%	IMF%
+10.8	+9.4	-1.6	+0.6	+37	+64	+79	+59	+19	+2.0	-4.4	+60	+5.3	+2.0	+2.4	+0.2	+1.5
49%	36%	76%	74%	69%	69%	72%	65%	56%	77%	38%	60%	52%	55%	59%	52%	58%

Traits Observed: GL,CE,BWT,200WT,400WT,600WT,SS,FAT,EMA,IMF,Genomics

Parent Verification: Sire: Verified, Dam: Verified

Notes: A grade phenotype on this Glentrevor Trust son. Double cross of breed legends NJW Trust, NJW Daydream 73S in an Australian type. A long, strong Endure heifer's calf with a good spine and hip. S6 is a blanket use bull with calving ease credentials, but has enough grunt to add value over mixed age cows. Multi purpose bulls lower your bull cost, infuse consistent calving ease and increase profit. 6 of the first 9 lots are from 2yo heifers. Top end calving ease - Top 10% CED CEDIR BW. Curve bending growth - Top 30% 200, 400. Great carcass - Top 20% or better EMA FAT IMF. High profit - Top 10% INDEXES. Market/ system suitability: MSA F BB W MP



**Lot 10 YALGOO SAXON S210 (PP)**

Ident: SODS210

Born: 16/10/2021

Eye Pigment: 100/100

ALLEDALE YACKA (AI) (P)  
 ALLEDALE ANZAC E114 (PP)  
 ALLEDALE DAWN B22 (AI) (ET) (P)  
 Sire: **WIRRUNA NIXON N168 (AI) (TW) (PP)**  
 ELITE 4110 E212 (AI) (PP)  
 WIRRUNA DIDO H45 (AI) (PP)  
 WIRRUNA DIDO F371 (ET) (P)

CAPETHORNE HOT SHOT 03 22 (P)  
 MATARIKI HOLY - SMOKE (IMP NZL) (P)  
 MATARIKI GIRLIE 00323 (P)  
 Dam: **YALGOO BLUSH N019 (AI) (P)**  
 YALGOO BOOSTER B045 (AI) (P)  
 YALGOO BLUSH F161 (AI) (P)  
 YALGOO BLUSH A036 (P)

**\$ Index Values**

Southern Self Replacing: +\$173  
 Northern Self Replacing: +\$164  
 Southern Baldy Maternal: +\$154  
 Northern Baldy Terminal: +\$109

Purchaser: .....

Price \$: .....

June 2023 Hereford BREEDPLAN																
CE (DIR)	CE (DTRS)	GL	BW	200	400	600	MCW	Milk	SS	DC	Cwt	EMA	Rib	RUMP	RBY%	IMF%
-3.9	-1.3	-2.3	+5.4	+47	+73	+97	+73	+19	+4.3	-5.1	+70	+6.2	+2.4	+3.8	+0.0	+2.0
48%	41%	68%	74%	69%	69%	70%	64%	57%	74%	43%	59%	51%	55%	58%	52%	57%

Traits Observed: BWT,200WT,400WT,600WT,SS,FAT,EMA,IMF,Genomics

Parent Verification: Sire: Verified, Dam: Not Verified

Notes: Two out and out power bulls at lot's 10 and 11. Not sure there are many stud sire's, that can put this very bold muscle pattern together with top 5% IMF. Wide, deep and powerful, an absolute stand out for quality, capacity and outlook. Good growth - Top 10% 200 400, Top 5% SC, Awesome carcass - Top 20% EMA Top 5% IMF. Market/ system suitability: SM MSA F BB W HGS

**Lot 11 YALGOO SLEEPER S032 (AI) (PP)**

Ident: SODS032

Born: 21/08/2021

Eye Pigment: 100/100

CAPETHORNE HOT SHOT 03 22 (P)  
 MATARIKI HOLY - SMOKE (IMP NZL) (P)  
 MATARIKI GIRLIE 00323 (P)  
 Sire: **WIRRUNA JUSTIN J13 (AI) (PP)**  
 WIRRUNA ELDAD E107 (AI) (P)  
 WIRRUNA DOREEN G393 (P)  
 WIRRUNA DOREEN E42 (AI) (H#)

KOANUI UNANIMOUS 0408 (P)  
 KOANUI TECHNO 3062 (IMP NZL) (PP)  
 KOANUI BLUSH 6455 (P)  
 Dam: **YALGOO VANESSA Q069 (AI) (P)**  
 NJW 73S M326 TRUST 100W ET (IMP USA) (ET) (P)  
 YALGOO VANESSA M085 (AI) (P)  
 YALGOO VANESSA D021 (AI) (P)

**\$ Index Values**

Southern Self Replacing: +\$204  
 Northern Self Replacing: +\$186  
 Southern Baldy Maternal: +\$197  
 Northern Baldy Terminal: +\$138

Purchaser: .....

Price \$: .....

June 2023 Hereford BREEDPLAN																
CE (DIR)	CE (DTRS)	GL	BW	200	400	600	MCW	Milk	SS	DC	Cwt	EMA	Rib	RUMP	RBY%	IMF%
+0.0	+5.7	-2.0	+7.6	+50	+86	+120	+115	+12	+4.2	-4.6	+78	+5.1	+0.1	-0.1	+1.6	+0.8
55%	49%	76%	74%	70%	70%	72%	66%	62%	77%	50%	63%	58%	61%	63%	58%	62%

Traits Observed: GL,BWT,200WT,400WT,600WT,SS,FAT,EMA,IMF,Genomics

Parent Verification: Sire: Verified, Dam: Not Verified

Notes: Justin and Techno works. Stud sire power, with an ideal maturity pattern. Another dominant bull in the pen and potentially the best phenotype in the sale. Heifer's calf that is pieced together really well. Hard to miss this top 1% growth sire, who still retains usable calving ease. Breed leading growth - Top 1% 200 400 600. Strong fertility - Top 30% GL, 5% SC 15% DC. High profit - Top 5% SSR NSR indexes. Market/ system suitability: F BB HGS W

**Lot 12 YALGOO SCAM S196 (PP)**

Ident: SODS196

Born: 14/10/2021

Eye Pigment: 100/100

ALLEDALE YACKA (AI) (P)  
 ALLEDALE ANZAC E114 (PP)  
 ALLEDALE DAWN B22 (AI) (ET) (P)  
 Sire: **WIRRUNA NIXON N168 (AI) (TW) (PP)**  
 ELITE 4110 E212 (AI) (PP)  
 WIRRUNA DIDO H45 (AI) (PP)  
 WIRRUNA DIDO F371 (ET) (P)

STUDBROOK D'ARTAGNION V086 (AI) (ET) (S)  
 YALGOO VICEROY E316 (ET) (PP)  
 YALGOO VANESSA T104 (P)  
 Dam: **YALGOO BETTE N090 (AI) (ET) (P)**  
 NJW 73S M326 TRUST 100W ET (IMP USA) (ET) (P)  
 YALGOO BETTE J209 (AI) (PP)  
 YALGOO BETTE D240 (ET) (P)

**\$ Index Values**

Southern Self Replacing: +\$177  
 Northern Self Replacing: +\$161  
 Southern Baldy Maternal: +\$172  
 Northern Baldy Terminal: +\$124

Purchaser: .....

Price \$: .....

June 2023 Hereford BREEDPLAN																
CE (DIR)	CE (DTRS)	GL	BW	200	400	600	MCW	Milk	SS	DC	Cwt	EMA	Rib	RUMP	RBY%	IMF%
-1.0	+1.7	+0.0	+6.4	+47	+76	+108	+93	+21	+3.1	-4.0	+71	+5.9	+1.6	+2.8	+0.2	+1.4
46%	38%	65%	73%	68%	67%	69%	63%	56%	74%	41%	58%	50%	54%	57%	51%	56%

Traits Observed: BWT,200WT,400WT,600WT,SS,FAT,EMA,IMF,Genomics

Parent Verification: Sire: Verified, Dam: Not Verified

Notes: Big volume, sound growth bull with extra muscle. We've been lucky to have three of the most prepotent sire's we've owned, walking the paddocks at the same time. Tobruk Lennox, Wirruna Nixon and Yalgoo Mace are proper industry bulls with the ability to reproduce themselves consistently. Each three have a balanced genotype and produce that moderate, sound, thick easy doing type. High growth - Top 5% growth. Good fertility - Top 15% SC Top 30% DC. Strong carcass - Top 10% EMA P8. Top 15% RIB IMF. Market/ system suitability: MSA F BB HGS

Lot 13

YALGOO REFLEX S141 (AI) (PP)

Ident: SODS141

Born: 02/10/2021

Eye Pigment: 095/100

LIMEHILLS STAMPER 110429 (P)

LIMEHILLS STAMPER 140064 (P)

LIMEHILLS LEONORA 749 (P)

Sire: LIMEHILLS STARTER 160062 (IMP NZL) (PP)

OKAWA ELECTRA 1117 (P)

LIMEHILLS BEAUTY 140225 (P)

LIMEHILLS BEAUTY 110483 (P)

KCF BENNETT 3008 M326 (P)

NJW 73S M326 TRUST 100W ET (IMP USA) (ET) (P)

NJW P606 72N DAYDREAM 73S (P)

Dam: YALGOO K401 (AI) (P)

BOWEN UNIQUE U161 (AI) (P)

YALGOO LIQUER Z147 (P)

YALGOO LIQUER P44 (P)

\$ Index Values

Southern Self Replacing: +\$157

Northern Self Replacing: +\$144

Southern Baldy Maternal: +\$171

Northern Baldy Terminal: +\$120

Purchaser: .....

Price \$: .....

June 2023 Hereford BREEDPLAN																
CE (DIR)	CE (DTRS)	GL	BW	200	400	600	MCW	Milk	SS	DC	Cwt	EMA	Rib	RUMP	RBY%	IMF%
+5.7	+7.2	+0.2	+3.2	+37	+58	+78	+50	+23	+0.8	-2.4	+60	+5.3	+2.0	+2.4	-0.1	+1.2
53%	44%	76%	74%	70%	70%	73%	67%	62%	78%	41%	62%	54%	57%	61%	55%	59%

Traits Observed: GL,BWT,200WT,400WT,600WT,SS,FAT,EMA,IMF,Genomics Parent Verification: Sire: Verified, Dam: Not Verified

Notes: High quality individual with volume and base width. Sire is delivering attractive performance cattle. Over 80% of the catalogue have one of 5 influential Yalgoo dams in their pedigree. S141's grand dam Z147 is one of these dams. Stacking pedigree's with proven matrons, provides you with a consistent, predictable package and maternal excellence. Easy calving bull designed to breed superior Supermarket progeny and hard working, moderate replacement females. High end calving ease - Top 30% CEDIR Top 10% CEDRTS. Efficient replacements - Low MCW, Top 10% MILK. Balanced carcass - Top 30% or better EMA FAT IMF. Market/ system suitability: SM F W F MSA BB MP

Lot 14

YALGOO QUICKSILVER S192 (PP)

Ident: SODS192

Born: 12/10/2021

Eye Pigment: 050/100

ALLEDALE ANZAC E114 (PP)

WIRRUNA MATTY M288 (AI) (ET) (PP)

WIRRUNA CIRCLE H13 (AI) (PP)

Sire: YALGOO QUOTA Q006 (AI) (PP)

CHURCHILL KICKSTART 501C (IMP USA) (AI) (ET) (P)

YALGOO TIGRESS N030 (AI) (P)

YALGOO TIGRESS Z241 (H#)

ARDO HUSTLER 4110 (IMP NZL) (P)

ELITE 4110 H297 (AI) (PP)

ELITE FAVOURITE 0219 C133 (AI) (P)

Dam: YALGOO BLUSH N089 (AI) (ET) (P)

REMITALL ONLINE 122L (IMP CAN) (P)

YALGOO BLUSH J102 (AI) (PP)

YALGOO BLUSH D006 (P)

\$ Index Values

Southern Self Replacing: +\$164

Northern Self Replacing: +\$154

Southern Baldy Maternal: +\$152

Northern Baldy Terminal: +\$106

Purchaser: .....

Price \$: .....

June 2023 Hereford BREEDPLAN																
CE (DIR)	CE (DTRS)	GL	BW	200	400	600	MCW	Milk	SS	DC	Cwt	EMA	Rib	RUMP	RBY%	IMF%
-3.0	+2.9	-4.1	+5.7	+44	+72	+94	+77	+12	+2.9	-2.9	+62	+5.3	+1.1	+1.3	+1.0	+1.5
42%	34%	62%	72%	66%	66%	69%	61%	53%	76%	37%	56%	48%	51%	55%	48%	53%

Traits Observed: BWT,200WT,400WT,600WT,SS,FAT,EMA,IMF,Genomics Parent Verification: Sire: Verified, Dam: Not Verified

Notes: Balanced performance has S192 in the top 30% of better for 13 traits/ indexes. Good early growth - Top 10% 200 400. High fertility - Top 10% GL top 20% SC. Grid topping carcass Top 15% EMA Top 10% IMF. Market/ system suitability: MSA F HGS BB W

Lot 15

YALGOO STUD S194 (PP)

Ident: SODS194

Born: 14/10/2021

Eye Pigment: 085/100

ALLEDALE YACKA (AI) (P)

ALLEDALE ANZAC E114 (PP)

ALLEDALE DAWN B22 (AI) (ET) (P)

Sire: WIRRUNA NIXON N168 (AI) (TW) (PP)

ELITE 4110 E212 (AI) (PP)

WIRRUNA DIDO H45 (AI) (PP)

WIRRUNA DIDO F371 (ET) (P)

KCF BENNETT 3008 M326 (P)

NJW 73S M326 TRUST 100W ET (IMP USA) (ET) (P)

NJW P606 72N DAYDREAM 73S (P)

Dam: YALGOO BLUSH N127 (AI) (ET) (P)

BENDULLA WINSTON (P)

YALGOO BLUSH A036 (P)

YALGOO BLUSH S8 (P)

\$ Index Values

Southern Self Replacing: +\$170

Northern Self Replacing: +\$161

Southern Baldy Maternal: +\$176

Northern Baldy Terminal: +\$131

Purchaser: .....

Price \$: .....

June 2023 Hereford BREEDPLAN																
CE (DIR)	CE (DTRS)	GL	BW	200	400	600	MCW	Milk	SS	DC	Cwt	EMA	Rib	RUMP	RBY%	IMF%
+4.3	+3.9	-0.7	+2.6	+38	+65	+83	+60	+24	+3.7	-3.7	+63	+6.1	+1.7	+2.4	+0.5	+2.0
48%	41%	67%	74%	69%	69%	70%	64%	58%	75%	43%	59%	53%	56%	59%	53%	58%

Traits Observed: BWT,200WT,400WT,600WT,SS,FAT,EMA,IMF,Genomics Parent Verification: Sire: Verified, Dam: Not Verified

Notes: Here is a homozygous polled, unique heifer option with solid performance and a proven pedigree. Considered for use in herd over heifers for his top end carcass traits. High fertility - Top 30% BW, Top 5% SC. Superior carcass - Top 10% IMF and EMA. Market/ system suitability: SM MSA F BB HB MP



**Lot 16 YALGOO RASCAL S159 (AI) (PP)**

Ident: SODS159

Born: 06/10/2021

Eye Pigment: 100/100

SCHU-LAR ON TARGET 22S (IMP USA) (ET) (P)  
 KCF BENNETT STRATEGY Z303 ET (P)  
 KCF MISS REVOLUTION X338 (ET) (P)  
 Sire: **TH MASTERPLAN 183F (IMP USA) (PP)**  
 FTF PROSPECTOR 145Y (IMP USA) (P)  
 TH 512X 145Y DOMINETTE 57B (P)  
 TH 122 711 DOMINETTE 512X ET (P)  
 CAPETHORNE HOT SHOT 03 22 (P)  
 MATARIKI HOLY - SMOKE (IMP NZL) (P)  
 MATARIKI GIRLIE 00323 (P)  
 Dam: **YALGOO MELODY P144 (AI) (P)**  
 VALMA MAGNUM II (P)  
 YALGOO MELODY H13 (P)  
 YALGOO MELODY E204 (P)

**\$ Index Values**

Southern Self Replacing: +\$167  
 Northern Self Replacing: +\$153  
 Southern Baldy Maternal: +\$157  
 Northern Baldy Terminal: +\$114

Purchaser: .....

Price \$: .....

June 2023 Hereford BREEDPLAN																
CE (DIR)	CE (DTRS)	GL	BW	200	400	600	MCW	Milk	SS	DC	Cwt	EMA	Rib	RUMP	RBY%	IMF%
-2.1	-2.5	+2.3	+4.5	+44	+77	+97	+70	+18	+2.8	-2.8	+64	+6.4	+1.9	+2.1	+0.5	+1.6
45%	34%	76%	74%	69%	70%	72%	65%	56%	77%	36%	60%	53%	56%	59%	52%	57%

Traits Observed: GL,BWT,200WT,400WT,600WT,SS,FAT,EMA,IMF,Genomics

Parent Verification: Sire: Verified, Dam: Verified

**Notes:** My type. Thick, moderate and powerful. Rascal is heavy made, with extra boldness of his stifle carrying right down through his flank. A high volume, muscle bull that is set up right through his front end. I love his dam for her ability to add volume and thickness. I'd recommend you have a look at this Masterplan son as a sire, he's the right kind for breeding that next generation of industry bulls and by a sire that will be in demand. S159 is the modern type that adds grunt and power without sacrificing birth weight. Strong early growth - Top 10% 200 400. Awesome carcass - Top 10% IMF top 5% EMA. Moderate BW. Market/ system suitability: SM MSA F W HGS BB

**Lot 17 YALGOO SALUTE S012 (AI) (PP)**

Ident: SODS012

Born: 16/08/2021

Eye Pigment: 100/100

ALLEDALE YACKA (AI) (P)  
 ALLEDALE ANZAC E114 (PP)  
 ALLEDALE DAWN B22 (AI) (ET) (P)  
 Sire: **WIRRUNA MATTY M288 (AI) (ET) (PP)**  
 ELITE 4110 E212 (AI) (PP)  
 WIRRUNA CIRCLE H13 (AI) (PP)  
 WIRRUNA CIRCLE F31 (AI) (PP)  
 ALLEDALE ANZAC E114 (PP)  
 CURRACABARK MATTHEW M101 (AI) (ET) (PP)  
 CURRACABARK MINERVA D449 (AI) (P)  
 Dam: **YALGOO NETTIE PIE Q137 (P)**  
 NJW 73S M326 TRUST 100W ET (IMP USA) (ET) (P)  
 YALGOO NETTIE PIE M005 (AI) (P)  
 OOLAY NETTIE PIE J071 (P)

**\$ Index Values**

Southern Self Replacing: +\$197  
 Northern Self Replacing: +\$182  
 Southern Baldy Maternal: +\$211  
 Northern Baldy Terminal: +\$160

Purchaser: .....

Price \$: .....

June 2023 Hereford BREEDPLAN																
CE (DIR)	CE (DTRS)	GL	BW	200	400	600	MCW	Milk	SS	DC	Cwt	EMA	Rib	RUMP	RBY%	IMF%
+5.7	+3.5	-4.1	+4.7	+45	+78	+110	+94	+20	+4.3	-2.4	+71	+4.7	+1.4	+1.7	+0.4	+2.1
54%	47%	75%	75%	71%	71%	73%	68%	62%	77%	46%	63%	57%	61%	63%	57%	62%

Traits Observed: GL,CE,BWT,200WT,400WT,600WT,SS,FAT,EMA,IMF,Genomics

Parent Verification: Sire: Verified, Dam: Not Verified

**Notes:** High profit, slick skinned, muscle bull with an exceptional balance to his EBVS. A long, correct homozygous poll heifers calf that is top 10% or better for 12 indexes/ traits. I really like S012 for his combination of strong phenotype and superior genotype. High calving ease. Powerful growth - Top 5% 200 400 600. Milky replacements - Top 5% MILK. Strong carcass - top 30% EMA FAT Top 5% IMF CWT. Extreme profit - Top 10% all indexes Market/ system suitability: MSA F HGS BB MP

**Lot 18 YALGOO REPLY S215 (PP)**

Ident: SODS215

Born: 17/10/2021

Eye Pigment: 100/100

KOANUI UNANIMOUS 0408 (P)  
 KOANUI TECHNO 3062 (IMP NZL) (PP)  
 KOANUI BLUSH 6455 (P)  
 Sire: **YALGOO PRECISION Q107 (AI) (PP)**  
 NJW 73S M326 TRUST 100W ET (IMP USA) (ET) (P)  
 YALGOO K400 (AI) (P)  
 YALGOO LIQUER Z147 (P)  
 ALLEDALE ANZAC E114 (PP)  
 YALGOO BREAK OUT L279 (ET) (PP)  
 YALGOO BLUSH A036 (P)  
 Dam: **YALGOO ZELDA N249 (P)**  
 YALGOO BOULDER Y056 (S)  
 YALGOO ZELDA D051 (AI) (P)  
 YALGOO ZELDA R53 (AI) (P)

**\$ Index Values**

Southern Self Replacing: +\$182  
 Northern Self Replacing: +\$163  
 Southern Baldy Maternal: +\$194  
 Northern Baldy Terminal: +\$150

Purchaser: .....

Price \$: .....

June 2023 Hereford BREEDPLAN																
CE (DIR)	CE (DTRS)	GL	BW	200	400	600	MCW	Milk	SS	DC	Cwt	EMA	Rib	RUMP	RBY%	IMF%
+3.7	+2.0	-2.4	+5.3	+44	+79	+112	+103	+27	+4.3	-3.3	+80	+6.8	+0.8	+1.1	+1.1	+1.1
40%	34%	58%	71%	65%	66%	69%	61%	52%	75%	37%	56%	47%	51%	55%	48%	51%

Traits Observed: BWT,200WT,400WT,600WT,SS,FAT,EMA,IMF,Genomics

Parent Verification: Sire: Verified, Dam: Verified

**Notes:** Big, soft, high capacity sire. A standout bull in the pen for his look. S215 is the culmination of continually piecing together cattle, with balanced performance, exceptional carcass traits and in demand phenotype. Positive calving ease. Top end growth - 5% 400 600. Heavy milking replacements - Top 5% MILK. Strong carcass - Top 5% EMA Top 20% IMF. High Profit - Top 10% SSR SBMI NBMI. Market/ system suitability: MSA F HGS BB W

Lot 19

YALGOO SPROCKET S035 (AI) (PP)

Ident: SODS035

Born: 22/08/2021

Eye Pigment: 100/100

WIRRUNA HARTWIG H297 (P)

WIRRUNA KALIMNA K326 (PP)

WIRRUNA CORA H303 (AI) (ET) (P)

Sire: WIRRUNA PROMISE P239 (AI) (PP)

WIRRUNA HERNANDO H47 (AI) (P)

WIRRUNA CIRCLE M183 (AI) (P)

WIRRUNA CIRCLE K95 (AI) (P)

NJW 73S W18 HOMEGROWN 8Y (IMP USA) (PP)

YALGOO MATADOR N025 (AI) (PP)

YALGOO BLUSH J137 (P)

Dam: YALGOO VANESSA Q168 (P)

YALGOO JUROR L071 (AI) (PP)

YALGOO VANESSA N221 (P)

YALGOO VANESSA L189 (P)

\$ Index Values

Southern Self Replacing: +\$169

Northern Self Replacing: +\$154

Southern Baldy Maternal: +\$176

Northern Baldy Terminal: +\$128

Purchaser: .....

Price \$: .....

June 2023 Hereford BREEDPLAN																
CE (DIR)	CE (DTRS)	GL	BW	200	400	600	MCW	Milk	SS	DC	Cwt	EMA	Rib	RUMP	RBY%	IMF%
+6.7	+2.3	+0.0	+1.3	+36	+63	+77	+39	+28	+4.7	-5.4	+56	+3.6	+2.6	+3.6	-1.3	+1.9
42%	32%	73%	72%	67%	67%	68%	61%	50%	76%	37%	57%	49%	54%	58%	47%	56%

**Traits Observed:** GL,CE,BWT,200WT,400WT,SS,Genomics      **Parent Verification:** Sire: Verified, Dam: Not Verified

**Notes:** Uncomplicated calving ease sire, with high carcass merit. This heifer's calf has capacity, good feet and is thick. Top end fertility - Top 30% CE Top 15% BW Top 1% SC Top 10% DC. High milk - Top 1%. MSA carcass - Top 5% FAT and IMF. High profit - Top 30% all indexes. Market/ system suitability: SM MSA F BB HB

Lot 20

YALGOO S216 (HPR) (PP)

Ident: SODS216

Born: 17/10/2021

Eye Pigment: 100/100

ALLENDALE YACKA (AI) (P)

ALLENDALE ANZAC E114 (PP)

ALLENDALE DAWN B22 (AI) (ET) (P)

Sire: WIRRUNA NIXON N168 (AI) (TW) (PP)

ELITE 4110 E212 (AI) (PP)

WIRRUNA DIDO H45 (AI) (PP)

WIRRUNA DIDO F371 (ET) (P)

NJW 73S M326 TRUST 100W ET (IMP USA) (ET) (P)

YALGOO JET M048 (AI) (P)

YALGOO DONNA BELLA D040 (AI) (P)

Dam: YALGOO P403 (HPR) (P)

INJEMIRA REDFORD AI J205 (AI) (P)

YALGOO M406 (HPR) (P)

YALGOO F310 (HPR) (P)

\$ Index Values

Southern Self Replacing: +\$183

Northern Self Replacing: +\$179

Southern Baldy Maternal: +\$188

Northern Baldy Terminal: +\$132

Purchaser: .....

Price \$: .....

June 2023 Hereford BREEDPLAN																
CE (DIR)	CE (DTRS)	GL	BW	200	400	600	MCW	Milk	SS	DC	Cwt	EMA	Rib	RUMP	RBY%	IMF%
+7.9	+5.6	-0.8	+1.6	+33	+58	+75	+47	+19	+3.8	-5.8	+57	+5.3	+2.3	+3.7	+0.1	+1.4
43%	35%	64%	73%	68%	68%	71%	64%	53%	76%	39%	58%	50%	54%	58%	52%	55%

**Traits Observed:** BWT,200WT,400WT,600WT,SS,FAT,EMA,IMF,Genomics      **Parent Verification:** Sire: Verified, Dam: Not Verified

**Notes:** He's a carcass bull. Love the pattern and volume of this bull. Very expressive through the hip and stifle, yet incredibly sound. The Yalgoo prototype - He's the benchmark for massive volume and genuine carcass. Yet S216 is so functional, uncomplicated and has a terrific genotype. Safe to say calving ease never looked so good! High fertility - Top 15% CE BW Top 5% SC DC. Genuine carcass merit - High visual muscle, Top 20% EMA Top 15% IMF. High profit - 10% SSR NSR. Market/ system suitability: SM MSA F BB MP

Lot 21

YALGOO RENDER S267 (PP)

Ident: SODS267

Born: 05/11/2021

Eye Pigment: 100/100

KOANUI UNANIMOUS 0408 (P)

KOANUI TECHNO 3062 (IMP NZL) (PP)

KOANUI BLUSH 6455 (P)

Sire: YALGOO PRECISION Q107 (AI) (PP)

NJW 73S M326 TRUST 100W ET (IMP USA) (ET) (P)

YALGOO K400 (AI) (P)

YALGOO LIQUER Z147 (P)

MATARIKI HOLY - SMOKE (IMP NZL) (P)

WIRRUNA JUSTIN J13 (AI) (PP)

WIRRUNA DOREEN G393 (P)

Dam: YALGOO LIQUER M179 (AI) (P)

NJW 73S M326 TRUST 100W ET (IMP USA) (ET) (P)

YALGOO K401 (AI) (P)

YALGOO LIQUER Z147 (P)

\$ Index Values

Southern Self Replacing: +\$193

Northern Self Replacing: +\$193

Southern Baldy Maternal: +\$209

Northern Baldy Terminal: +\$152

Purchaser: .....

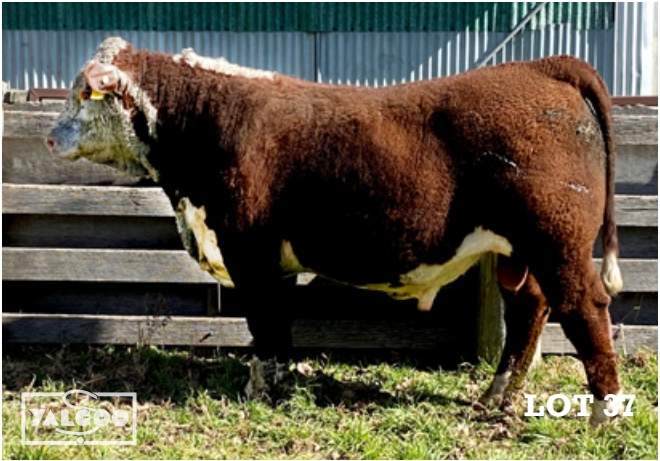
Price \$: .....

June 2023 Hereford BREEDPLAN																
CE (DIR)	CE (DTRS)	GL	BW	200	400	600	MCW	Milk	SS	DC	Cwt	EMA	Rib	RUMP	RBY%	IMF%
+9.5	+7.5	-2.6	-0.4	+27	+63	+75	+47	+22	+1.9	-4.2	+67	+7.6	+2.3	+3.4	+1.2	+1.7
44%	38%	65%	73%	67%	68%	71%	63%	55%	77%	41%	58%	51%	54%	58%	52%	55%

**Traits Observed:** BWT,200WT,400WT,600WT,SS,FAT,EMA,IMF,Genomics      **Parent Verification:** Sire: Verified, Dam: Not Verified

**Notes:** Maternal brother to our top selling bull in 2022, selling to the good WRL herd. Sound, mobile calving ease bull line bred to Z147 with flush sisters on the maternal and paternal sides of the pedigree. Sire Q107 was a really meaty, moderate Techno son. Sleep easy calving - Top 10% CE DIR CE DIR BW. Superior carcass - Top 1% EMA top 10% IMF. High end profit - Top 5% NSR SBMI NBMI. Market/ system suitability: SM MSA BB F HB MP







Lot 22 YALGOO QUENCH S243 (P)

Ident: SODS243Born: 25/10/2021Eye Pigment: 100/100

STUDBROOK D'ARTAGNION V086 (AI) (ET) (S)

OTAPAWA SPARK 3060 (IMP NZL) (AI) (ET) (P)

OTAPAWA SPOT P30 (P)

Sire: **TOBRUK LENNOX (ET) (PP)**

MOUNT DIFFICULT FELLIS Y12 (AI) (P)

PINE HILL MARITANA A619 (AI) (P)

PINE HILL MARITANA W575 (AI) (P)

TH 71U 719T MR HEREFORD 11X (IMP USA) (P)

YALGOO KLAXON K103 (AI) (P)

YALGOO BETTE D240 (ET) (P)

Dam: **YALGOO WHISPER M013 (P)**

YALGOO BREAK OUT G075 (AI) (P)

YALGOO WHISPER K084 (P)

YALGOO WHISPER D038 (P)

**\$ Index Values**

Southern Self Replacing: +\$178

Northern Self Replacing: +\$163

Southern Baldy Maternal: +\$165

Northern Baldy Terminal: +\$116

Purchaser: .....

Price \$: .....

June 2023 Hereford BREEDPLAN																
CE (DIR)	CE (DTRS)	GL	BW	200	400	600	MCW	Milk	SS	DC	Cwt	EMA	Rib	RUMP	RBY%	IMF%
-2.7	+0.0	+1.5	+6.2	+41	+71	+106	+91	+15	+3.2	-4.0	+66	+5.8	+1.4	+1.9	+1.1	+1.2
48%	41%	63%	74%	69%	69%	72%	66%	59%	77%	42%	60%	52%	56%	60%	54%	57%

Traits Observed: BWT,200WT,400WT,600WT,SS,FAT,EMA,IMF,GenomicsParent Verification: Sire: Verified, Dam: Not Verified

Notes: Soggy, classy Lennox son with good testicles. S243 has the maturity pattern, muscle, fat cover and balance of performance to get a variety of jobs done. Top 30% all better for 15 traits/ indexes. High growth - Top 10% 600. Good fertility - Top 30% or better DC SC. Superbly balanced carcass - Top 30% or better CWT EMA FAT RBY IMF. Market/ system suitability: SM MSA F HGS BB W

Lot 23 YALGOO QUARTERMASTER S091 (AI) (PP)

Ident: SODS091Born: 25/09/2021Eye Pigment: /090

DAYS ROBIN HOOD H38 (AI) (ET) (PP)

HUNTER LAKES LANCELOT L103 (AI) (ET) (PP)

HUNTER LAKES FANCY F7 (AI) (P)

Sire: **YALGOO PEACEMAKER P034 (AI) (PP)**

CHURCHILL STUD 3134A (IMP USA) (PP)

YALGOO TIGRESS L265 (ET) (P)

YALGOO TIGRESS Z241 (H#)

ARDO HUSTLER 4110 (IMP NZL) (P)

ELITE 4110 H297 (AI) (PP)

ELITE FAVOURITE 0219 C133 (AI) (P)

Dam: **YALGOO BLUSH N037 (AI) (ET) (P)**

REMITALL ONLINE 122L (IMP CAN) (P)

YALGOO BLUSH J102 (AI) (PP)

YALGOO BLUSH D006 (P)

**\$ Index Values**

Southern Self Replacing: +\$226

Northern Self Replacing: +\$217

Southern Baldy Maternal: +\$224

Northern Baldy Terminal: +\$158

Purchaser: .....

Price \$: .....

June 2023 Hereford BREEDPLAN																
CE (DIR)	CE (DTRS)	GL	BW	200	400	600	MCW	Milk	SS	DC	Cwt	EMA	Rib	RUMP	RBY%	IMF%
+3.9	+6.3	-5.8	+4.1	+46	+82	+114	+97	+18	+5.1	-6.1	+81	+6.7	+1.4	+2.1	+1.2	+1.2
42%	33%	74%	73%	68%	68%	70%	62%	51%	77%	35%	57%	49%	52%	56%	49%	52%

Traits Observed: GL,BWT,200WT,400WT,600WT,SS,FAT,EMA,IMF,GenomicsParent Verification: Sire: Verified, Dam: Not Verified

Notes: Euro type muscle expression with Hereford softness and fat cover in this Peacemaker son. Sire Peacemaker is the ideal combination of genotype and phenotype. A son was Sydney Grand Champion for Truro this year. Not only does P034 deliver show winning looks, he produces a commercial type with as balanced as performance as you will find. S091 is exhibit A with 14 traits or indexes in the top 10% of the breed. I also appreciate the sensible maturity pattern in a bull with so much performance. Excellent calving ease - Top 10% CEDRTS GL. Explosive growth - Top 5% 200 400 600. High fertility - Top 5% DC SC. Solid carcass - Top 5% EMA top 20% RUMP IMF. Big time profit - Top 1% SSR NSR indexes. Market/ system suitability: MSA SM F HGS BB MP

Lot 24 YALGOO PARRAMATTA S140 (AI) (PP)

Ident: SODS140Born: 02/10/2021Eye Pigment: 100/100

LIMEHILLS STAMPER 110429 (P)

LIMEHILLS STAMPER 140064 (P)

LIMEHILLS LEONORA 749 (P)

Sire: **LIMEHILLS STARTER 160062 (IMP NZL) (PP)**

OKAWA ELECTRA 1117 (P)

LIMEHILLS BEAUTY 140225 (P)

LIMEHILLS BEAUTY 110483 (P)

ALLENDAL E YACKA (AI) (P)

ALLENDAL E ANZAC E114 (PP)

ALLENDAL E DAWN B22 (AI) (ET) (P)

Dam: **YALGOO BLUSH L275 (ET) (P)**

BENDULLA WINSTON (P)

YALGOO BLUSH A036 (P)

YALGOO BLUSH S8 (P)

**\$ Index Values**

Southern Self Replacing: +\$151

Northern Self Replacing: +\$142

Southern Baldy Maternal: +\$148

Northern Baldy Terminal: +\$101

Purchaser: .....

Price \$: .....

June 2023 Hereford BREEDPLAN																
CE (DIR)	CE (DTRS)	GL	BW	200	400	600	MCW	Milk	SS	DC	Cwt	EMA	Rib	RUMP	RBY%	IMF%
+0.8	+3.6	-1.1	+4.6	+36	+54	+77	+51	+16	+3.0	-2.5	+53	+6.4	+1.5	+1.9	+1.0	+1.2
54%	47%	76%	75%	71%	71%	73%	67%	63%	78%	42%	62%	55%	58%	62%	57%	60%

Traits Observed: GL,BWT,200WT,400WT,600WT,SS,FAT,EMA,IMF,GenomicsParent Verification: Sire: Verified, Dam: Not Verified

Notes: Your going to really like the style of this bull. More moderate in his data and growth pattern than some of his peers. But a bull that is well balanced, with thickness and a super soft skin. A fluid moving, herd improver that should be there for the long haul. The Limehill Starter's are popular and S140 gives us a hint why. Strong carcass - Top 5% EMA Top 15% IMF. Market / system suitability: W SM F BB



**Lot 25 YALGOO SCALPEL S143 (AI) (P)**

Ident: SODS143

Born: 03/10/2021

Eye Pigment: 100/100

SCHU-LAR ON TARGET 22S (IMP USA) (ET) (P)  
 KCF BENNETT ENCORE Z311 (ET) (PP)  
 KCF MISS REVOLUTION X338 (ET) (P)  
 Sire: **NJW 79Z Z311 ENDURE 173D (IMP USA) (ET) (PP)**  
 NJW 73S M326 TRUST 100W ET (IMP USA) (ET) (P)  
 BW 91H 100W RITA 79Z (ET) (P)  
 REMITALL RITA 91H (P)

SOUTH BUKALONG WALLACE 2 (P)  
 GLENTREVOR WALLACE H427 (AI) (PP)  
 GLENTREVOR MARITANA F240 (P)  
 Dam: **YALGOO BLUSH N018 (AI) (P)**  
 NJW 73S M326 TRUST 100W ET (IMP USA) (ET) (P)  
 YALGOO BLUSH L094 (AI) (P)  
 YALGOO BLUSH F207 (P)

**\$ Index Values**

Southern Self Replacing: +\$204  
 Northern Self Replacing: +\$190  
 Southern Baldy Maternal: +\$222  
 Northern Baldy Terminal: +\$157

Purchaser: .....

Price \$: .....

June 2023 Hereford BREEDPLAN																
CE (DIR)	CE (DTRS)	GL	BW	200	400	600	MCW	Milk	SS	DC	Cwt	EMA	Rib	RUMP	RBY%	IMF%
+10.1	+9.0	+1.7	+1.3	+35	+65	+87	+53	+26	+2.4	-4.3	+68	+6.8	+1.3	+0.9	+1.4	+1.3
52%	40%	77%	75%	71%	70%	71%	65%	61%	72%	40%	61%	56%	59%	61%	52%	61%

Traits Observed: GL,BWT,200WT,400WT,600WT,SS,Genomics

Parent Verification: Sire: Verified, Dam: Not Verified

**Notes:** Our only son of breed legend Endure in this years offering. Moderate, thick and classy multi use bull. Endure has been popular for lots of reasons, he's does everything right and does it with a little bit more style. S143 has 10 traits/ indexes in the top 10% or better. Total package when you put his pedigree, performance and phenotype together. Sleep easy calving - Top 5% CEDIR CEDRT. Curve bending growth - Top 30% BW 400 600. Grid topping carcass - Top 5% EMA top 15% IMF. Serious profit - Top 5% all indexes. Market/ system suitability: SM MSA F BB MP HB

**Lot 26 YALGOO REACTOR S232 (P)**

Ident: SODS232

Born: 22/10/2021

Eye Pigment: 100/100

DAYS ROBIN HOOD H38 (AI) (ET) (PP)  
 HUNTER LAKES LANCELOT L103 (AI) (ET) (PP)  
 HUNTER LAKES FANCY F7 (AI) (P)  
 Sire: **YALGOO PIONEER Q047 (AI) (PP)**  
 NJW 73S M326 TRUST 100W ET (IMP USA) (ET) (P)  
 YALGOO BUFFY M117 (AI) (ET) (P)  
 YALGOO BUFFY D191 (P)

CAPETHORNE HOT SHOT 03 22 (P)  
 MATARIKI HOLY - SMOKE (IMP NZL) (P)  
 MATARIKI GIRLIE 00323 (P)  
 Dam: **YALGOO BLUSH P097 (AI) (P)**  
 PINE HILL GOLIATH A615 (AI) (S)  
 YALGOO BLUSH D006 (P)  
 YALGOO BLUSH A036 (P)

**\$ Index Values**

Southern Self Replacing: +\$165  
 Northern Self Replacing: +\$155  
 Southern Baldy Maternal: +\$175  
 Northern Baldy Terminal: +\$132

Purchaser: .....

Price \$: .....

June 2023 Hereford BREEDPLAN																
CE (DIR)	CE (DTRS)	GL	BW	200	400	600	MCW	Milk	SS	DC	Cwt	EMA	Rib	RUMP	RBY%	IMF%
+3.2	+3.4	-3.3	+2.8	+35	+61	+90	+78	+26	+1.8	-2.4	+70	+7.5	-0.3	-0.1	+3.3	+0.4
41%	36%	63%	71%	65%	66%	69%	61%	52%	75%	37%	56%	48%	52%	55%	49%	52%

Traits Observed: BWT,200WT,400WT,600WT,SS,FAT,EMA,IMF,Genomics

Parent Verification: Sire: Verified, Dam: Not Verified

**Notes:** Yalgoo prototype - moderate, heavy patterned and tight sheathed. Stand out for his classy, robust phenotype and multi use genotype. Sire sold to Neville Shannons good herd and looks to be producing that soft skinned, thick, attractive and functional type. Curve bending growth - Top 30% BW Top 10% GL top 25% 600. More milk - Top 5% MILK. More yield - Top 5% EMA Top 10% CWT. Top 1% RBY. Market/ system suitability: SM F BB W HB

**Lot 27 YALGOO REVEAL S116 (AI) (PP)**

Ident: SODS116

Born: 29/09/2021

Eye Pigment: 100/100

SCHU-LAR ON TARGET 22S (IMP USA) (ET) (P)  
 KCF BENNETT STRATEGY Z303 ET (P)  
 KCF MISS REVOLUTION X338 (ET) (P)  
 Sire: **TH MASTERPLAN 183F (IMP USA) (PP)**  
 FTF PROSPECTOR 145Y (IMP USA) (P)  
 TH 512X 145Y DOMINETTE 57B (P)  
 TH 122 711 DOMINETTE 512X ET (P)

KCF BENNETT 3008 M326 (P)  
 NJW 73S M326 TRUST 100W ET (IMP USA) (ET) (P)  
 NJW P606 72N DAYDREAM 73S (P)  
 Dam: **YALGOO BETTE N038 (AI) (P)**  
 WIRRUNA DAFFY D1 (P)  
 YALGOO BETTE G040 (AI) (P)  
 YALGOO BETTE Z044 (P)

**\$ Index Values**

Southern Self Replacing: +\$168  
 Northern Self Replacing: +\$163  
 Southern Baldy Maternal: +\$188  
 Northern Baldy Terminal: +\$144

Purchaser: .....

Price \$: .....

June 2023 Hereford BREEDPLAN																
CE (DIR)	CE (DTRS)	GL	BW	200	400	600	MCW	Milk	SS	DC	Cwt	EMA	Rib	RUMP	RBY%	IMF%
+11.2	+5.1	+0.3	-0.1	+34	+62	+74	+56	+19	+2.6	-5.0	+54	+5.3	+1.5	+1.2	+0.6	+1.1
45%	33%	76%	75%	70%	70%	72%	64%	57%	78%	37%	60%	54%	57%	60%	52%	58%

Traits Observed: GL,BWT,200WT,400WT,600WT,SS,FAT,EMA,IMF,Genomics

Parent Verification: Sire: Verified, Dam: Not Verified

**Notes:** No stress here, with this bonafide heifer option. Negative BW, top 5% CE and superb calving ease structure will give you the best chance possible of live calves at minimum cost. Another Masterplan son. Masterplan will see heavy use here and looks to be the next building block from Endure with that ideal combination of balanced performance and carcass with all the visual trimmings. Sale topping calving ease - Top 5% CED BW. Sound fertility - Top 25% SC Top 10% DC. Balanced carcass - Top 20% EMA RIB IMF. Market/ system suitability: SM MSA F BB HB

Lot 28

YALGOO SERGEANT S223 (PP)

Ident: SODS223

Born: 19/10/2021

Eye Pigment: 100/100

ALLEDALE YACKA (AI) (P)

ALLEDALE ANZAC E114 (PP)

ALLEDALE DAWN B22 (AI) (ET) (P)

Sire: WIRRUNA NIXON N168 (AI) (TW) (PP)

ELITE 4110 E212 (AI) (PP)

WIRRUNA DIDO H45 (AI) (PP)

WIRRUNA DIDO F371 (ET) (P)

STUDBROOK D'ARTAGNION V086 (AI) (ET) (S)

YALGOO VICEROY E316 (ET) (PP)

YALGOO VANESSA T104 (P)

Dam: YALGOO BETTE N121 (AI) (ET) (P)

NJW 73S M326 TRUST 100W ET (IMP USA) (ET) (P)

YALGOO BETTE J209 (AI) (PP)

YALGOO BETTE D240 (ET) (P)

\$ Index Values

Southern Self Replacing: +\$165

Northern Self Replacing: +\$146

Southern Baldy Maternal: +\$165

Northern Baldy Terminal: +\$120

Purchaser: .....

Price \$: .....

June 2023 Hereford BREEDPLAN																
CE (DIR)	CE (DTRS)	GL	BW	200	400	600	MCW	Milk	SS	DC	Cwt	EMA	Rib	RUMP	RBY%	IMF%
+0.7	+2.1	+0.6	+3.9	+41	+69	+93	+68	+27	+2.9	-3.6	+63	+4.5	+1.6	+2.4	-0.1	+1.9
46%	38%	67%	73%	69%	69%	72%	63%	56%	77%	41%	59%	52%	55%	59%	53%	57%

**Traits Observed:** BWT,200WT,400WT,600WT,SS,FAT,EMA,IMF,Genomics      **Parent Verification:** Sire: Verified, Dam: Not Verified

**Notes:** Building into some powerful lots here. This Nixon son is a good example of why I am proud of the depth of this catalogue. He has the phenotype and balanced performance to be lotted anywhere and has sire credentials. Pedigree is filled with donors and Nixon could be the breed's premier bull for combining high IMF with muscle and design. Highly recommended. Curve bending growth - Positive calving ease, moderate birth, Top 20% 200 400. Super meat quality - Top 5% IMF. Market/ system suitability: SM MSA F W HGS BB

Lot 29

YALGOO PRECISION S241 (PP)

Ident: SODS241

Born: 26/10/2021

Eye Pigment: 100/040

ALLEDALE YACKA (AI) (P)

ALLEDALE ANZAC E114 (PP)

ALLEDALE DAWN B22 (AI) (ET) (P)

Sire: WIRRUNA NIXON N168 (AI) (TW) (PP)

ELITE 4110 E212 (AI) (PP)

WIRRUNA DIDO H45 (AI) (PP)

WIRRUNA DIDO F371 (ET) (P)

KCF BENNETT 3008 M326 (P)

NJW 73S M326 TRUST 100W ET (IMP USA) (ET) (P)

NJW P606 72N DAYDREAM 73S (P)

Dam: YALGOO K400 (AI) (P)

BOWEN UNIQUE U161 (AI) (P)

YALGOO LIQUER Z147 (P)

YALGOO LIQUER P44 (P)

\$ Index Values

Southern Self Replacing: +\$189

Northern Self Replacing: +\$172

Southern Baldy Maternal: +\$191

Northern Baldy Terminal: +\$136

Purchaser: .....

Price \$: .....

June 2023 Hereford BREEDPLAN																
CE (DIR)	CE (DTRS)	GL	BW	200	400	600	MCW	Milk	SS	DC	Cwt	EMA	Rib	RUMP	RBY%	IMF%
+1.5	+3.1	+3.2	+6.1	+45	+77	+105	+77	+22	+3.2	-2.6	+67	+6.1	+1.6	+2.4	+0.4	+1.8
48%	40%	68%	74%	70%	70%	72%	65%	58%	78%	42%	61%	53%	56%	60%	54%	58%

**Traits Observed:** BWT,200WT,400WT,600WT,SS,FAT,EMA,IMF,Genomics      **Parent Verification:** Sire: Verified, Dam: Not Verified

**Notes:** A late October born rig. Ideal phenotype, massive barreled with a great dam. You can tick everything off here. Top young bull with extra grunt. Top 10% or better for 9 traits. Positive calving ease. Rapid growth - Top 5% 200 400. Awesome carcass data and visual muscle - Top 10% EMA and IMF. Market/ system suitability: MSA F HGS BB

Lot 30

YALGOO MINOTAUR S166 (PP)

Ident: SODS166

Born: 07/10/2021

Eye Pigment: 100/100

ALLEDALE YACKA (AI) (P)

ALLEDALE ANZAC E114 (PP)

ALLEDALE DAWN B22 (AI) (ET) (P)

Sire: WIRRUNA NIXON N168 (AI) (TW) (PP)

ELITE 4110 E212 (AI) (PP)

WIRRUNA DIDO H45 (AI) (PP)

WIRRUNA DIDO F371 (ET) (P)

VALMA JAMBOREE Y41 (P)

VALMA MAGNUM II (PP)

VALMA ADVANCER'S BANKSIA S86 (P)

Dam: YALGOO MELODY H13 (P)

EBBX BOLLINGER (AI) (ET) (P)

YALGOO MELODY E204 (P)

YALGOO MELODY Z023 (P)

\$ Index Values

Southern Self Replacing: +\$135

Northern Self Replacing: +\$123

Southern Baldy Maternal: +\$132

Northern Baldy Terminal: +\$98

Purchaser: .....

Price \$: .....

June 2023 Hereford BREEDPLAN																
CE (DIR)	CE (DTRS)	GL	BW	200	400	600	MCW	Milk	SS	DC	Cwt	EMA	Rib	RUMP	RBY%	IMF%
-1.4	+0.2	-1.0	+4.3	+39	+60	+83	+66	+18	+3.5	-2.3	+57	+4.2	+1.5	+1.8	+0.0	+1.7
48%	39%	67%	75%	70%	70%	73%	65%	58%	78%	41%	60%	53%	56%	60%	54%	58%

**Traits Observed:** BWT,200WT,400WT,600WT,SS,FAT,EMA,IMF,Genomics      **Parent Verification:** Sire: Verified, Dam: Not Verified

**Notes:** Even though S166 is lower indexing, he is a sound, thick bull with nicely balanced EBVs and top end IMF. Dam is a highlight here, she never missed a beat, produced a sire for the excellent Cascade herd and is the grand dam of our special lot 16 bull. Low cost, functional bull. Big scrotal - Top 10% Deluxe meat quality - Top 10% IMF. Market/ system suitability: SM MSA F BB

32      yalgoogenetics.com.au



**Lot 31 YALGOO PUNTA S179 (PP)**

Ident: SODS179

Born: 11/10/2021

Eye Pigment: 100/100

MSU TCF REVOLUTION 4R (IMP USA) (PP)  
 KCF BENNETT REVOLUTION X51 (IMP USA) (P)  
 KCF MISS PROFICIENT U201 (P)  
 Sire: **YALGOO MACE M039 (AI) (PP)**  
 REMITALL ONLINE 122L (IMP CAN) (P)  
 YALGOO BLUSH J102 (AI) (PP)  
 YALGOO BLUSH D006 (P)

MOUNTAIN VALLEY QUICKDRAW A18 (P)  
 MOUNTAIN VALLEY EFFICIENT E23 (P)  
 MOUNTAIN VALLEY ROLLINA A5 (AI) (P)  
 Dam: **YALGOO ZELDA J013 (P)**  
 ALLENDALE WATERHOUSE D1 (PP)  
 YALGOO ZELDA F171 (AI) (P)  
 YALGOO ZELDA Z137 (P)

**\$ Index Values**

Southern Self Replacing: +\$197  
 Northern Self Replacing: +\$182  
 Southern Baldy Maternal: +\$197  
 Northern Baldy Terminal: +\$145

Purchaser: .....

Price \$: .....

**June 2023 Hereford BREEDPLAN**

CE (DIR)	CE (DTRS)	GL	BW	200	400	600	MCW	Milk	SS	DC	Cwt	EMA	Rib	RUMP	RBY%	IMF%
+2.6	+3.6	-2.0	+7.6	+45	+77	+115	+118	+17	+1.4	-5.3	+71	+7.8	+0.7	+1.2	+2.1	+0.5
45%	36%	61%	74%	69%	69%	72%	64%	56%	77%	40%	59%	51%	55%	60%	53%	55%

Traits Observed: BWT,200WT,400WT,600WT,SS,FAT,EMA,IMF,Genomics

Parent Verification: Sire: Verified, Dam: Not Verified

**Notes:** Run of indusry bulls here by our favoured Mace sire. Commercial prototype with outstanding visual muscling and structure. These Mace sons make money with a minimum of fuss. He glides along with a loose skin, strong spine and real butt shape. His dam is big framed and classy who still weans them as heavy as she ever did. Positive calving ease. Explosive growth - Top 5% 400 600. Serious carcass - Top 1% EMA Top 5% CWT. High profit - Top 10% all indexes. Market/ system suitability: SM HGS F BB MSA

**Lot 32 YALGOO SIEGE S239 (PP)**

Ident: SODS239

Born: 24/10/2021

Eye Pigment: 100/100

MSU TCF REVOLUTION 4R (IMP USA) (PP)  
 KCF BENNETT REVOLUTION X51 (IMP USA) (P)  
 KCF MISS PROFICIENT U201 (P)  
 Sire: **YALGOO MACE M039 (AI) (PP)**  
 REMITALL ONLINE 122L (IMP CAN) (P)  
 YALGOO BLUSH J102 (AI) (PP)  
 YALGOO BLUSH D006 (P)

ELITE 4110 E212 (AI) (PP)  
 YALGOO LEGEND L016 (AI) (PP)  
 YALGOO WHISPER J108 (P)  
 Dam: **YALGOO VIOLA N117 (P)**  
 WIRRUNA GAYLORD G152 (ET) (P)  
 YALGOO VIOLA L145 (P)  
 YALGOO VIOLA G083 (P)

**\$ Index Values**

Southern Self Replacing: +\$174  
 Northern Self Replacing: +\$166  
 Southern Baldy Maternal: +\$171  
 Northern Baldy Terminal: +\$120

Purchaser: .....

Price \$: .....

**June 2023 Hereford BREEDPLAN**

CE (DIR)	CE (DTRS)	GL	BW	200	400	600	MCW	Milk	SS	DC	Cwt	EMA	Rib	RUMP	RBY%	IMF%
+3.5	+3.5	-0.4	+4.1	+38	+59	+79	+53	+21	+2.8	-5.4	+56	+7.3	+1.8	+2.3	+1.3	+1.1
43%	34%	61%	70%	67%	68%	71%	63%	54%	76%	38%	58%	49%	53%	57%	51%	54%

Traits Observed: BWT,200WT,400WT,600WT,SS,FAT,EMA,IMF,Genomics

Parent Verification: Sire: Verified, Dam: Not Verified

**Notes:** This type of all round performance is important in driving your cow herd profitability. It's critical that your breeders are producing the best possible result for the amount of dry matter they are consuming. The Mace sons are ideal for building efficient, moderate replacements and uniform high yielding steers. S239 will hold his shape and condition in tough times, like all Mace sons. Balanced performance - Top 30% or better for 13 traits/ indexes. Market/ system suitability: SM MSA F BB MP

**Lot 33 YALGOO SONAR S265 (PP)**

Ident: SODS265

Born: 05/11/2021

Eye Pigment: 050/

MSU TCF REVOLUTION 4R (IMP USA) (PP)  
 KCF BENNETT REVOLUTION X51 (IMP USA) (P)  
 KCF MISS PROFICIENT U201 (P)  
 Sire: **YALGOO MACE M039 (AI) (PP)**  
 REMITALL ONLINE 122L (IMP CAN) (P)  
 YALGOO BLUSH J102 (AI) (PP)  
 YALGOO BLUSH D006 (P)

ALLENDALE ANZAC E114 (PP)  
 INJEMIRA ANZAC K220 (AI) (PP)  
 INJEMIRA PLUM E212 (P)  
 Dam: **YALGOO TIGRESS P123 (P)**  
 NJW 73S M326 TRUST 100W ET (IMP USA) (ET) (P)  
 YALGOO TIGRESS L055 (ET) (P)  
 YALGOO TIGRESS Z241 (H#)

**\$ Index Values**

Southern Self Replacing: +\$188  
 Northern Self Replacing: +\$177  
 Southern Baldy Maternal: +\$178  
 Northern Baldy Terminal: +\$122

Purchaser: .....

Price \$: .....

**June 2023 Hereford BREEDPLAN**

CE (DIR)	CE (DTRS)	GL	BW	200	400	600	MCW	Milk	SS	DC	Cwt	EMA	Rib	RUMP	RBY%	IMF%
+0.2	+2.9	-0.1	+6.4	+43	+66	+94	+68	+19	+3.4	-4.7	+61	+9.1	+1.1	+1.2	+2.3	+1.0
45%	37%	60%	72%	68%	69%	71%	64%	53%	76%	38%	59%	51%	55%	59%	53%	56%

Traits Observed: BWT,200WT,400WT,600WT,SS,FAT,EMA,IMF,Genomics

Parent Verification: Sire: Verified, Dam: Verified

**Notes:** If you are in the beef business to make money I highly recommend the Mace's. This November calf has all the heavy hitters for muscle in his pedigree with Trust, Online, Anzac and X51, as well as two of our best females in A36 and Z241. The muscle from his pedigree is evident in this thick topped, deep flanked bull. Highest EMA of 9.1. Rapid early growth - Top 10% 200. Great fertility - Top 15% SC DC. Breed leading carcass - Top 1% EMA. Market/ system suitability: SM MSA F HGS BB

Lot 34

YALGOO SHINDIG S080 (PP)

Ident: SODS080

Born: 11/09/2021

Eye Pigment: 100/100

ALLENDAL E ANZAC E114 (PP)

WIRRUNA MATTY M288 (AI) (ET) (PP)

WIRRUNA CIRCLE H13 (AI) (PP)

Sire: YALGOO NEBRASKA Q032 (AI) (PP)

NJW 73S W18 HOMETOWN 10Y (IMP USA) (P)

YALGOO PRINCESS L062 (AI) (P)

YALGOO PRINCESS F167 (AI) (P)

KOANUI UNANIMOUS 0408 (P)

KOANUI TECHNO 3062 (IMP NZL) (PP)

KOANUI BLUSH 6455 (P)

Dam: YALGOO BLUSH Q078 (AI) (P)

ALLENDAL E ANZAC E114 (PP)

YALGOO BLUSH L275 (ET) (P)

YALGOO BLUSH A036 (P)

\$ Index Values

Southern Self Replacing: +\$183

Northern Self Replacing: +\$164

Southern Baldy Maternal: +\$188

Northern Baldy Terminal: +\$143

Purchaser: .....

Price \$: .....

June 2023 Hereford BREEDPLAN																
CE (DIR)	CE (DTRS)	GL	BW	200	400	600	MCW	Milk	SS	DC	Cwt	EMA	Rib	RUMP	RBY%	IMF%
+1.1	+1.3	-2.6	+6.6	+47	+80	+115	+104	+21	+3.2	-1.9	+74	+6.5	+0.8	+0.7	+1.4	+1.4
43%	37%	63%	71%	65%	66%	70%	62%	52%	76%	37%	56%	49%	53%	57%	51%	53%

Traits Observed: BWT,200WT,400WT,600WT,SS,FAT,EMA,IMF,Genomics

Parent Verification: Sire: Verified, Dam: Not Verified

Notes: Heavily muscled, well made performance bull here with a real QLD skin. Heifer's calf that retains positive calving ease although he is top 5% of the breed for growth. The bulls are lotted by paddock, so this bull would be equally at home in the first 10 lots. Goes back to our herd builder A036, she is in the pedigree of over 40% of the sale offering. She seemed to dominate her matings, consistently transmitting her IMF, carcass and quality. High growth - Top 5% 200 400 600. Strong carcass - Top 5% EMA top 15% IMF. Market/ system suitability: MSA F HGS BB W

Lot 35

YALGOO SCUFFLE S024 (AI) (PP)

Ident: SODS024

Born: 19/08/2021

Eye Pigment: 100/100

NJW 73S M326 TRUST 100W ET (IMP USA) (ET) (P)

ELITE TRUST K215 (AI) (S)

ELITE RUTH 0219 D163 (AI) (P)

Sire: GLENTREVOR TRUST N909 (AI) (PP)

SOUTH BUKALONG WALLACE 2 (P)

GLENTREVOR SIRIKIT J504 (AI) (P)

GLENTREVOR SIRIKIT F252 (P)

KCF BENNETT ENCORE Z311 (ET) (PP)

NJW 79Z Z311 ENDURE 173D (IMP USA) (ET) (PP)

BW 91H 100W RITA 79Z (ET) (P)

Dam: YALGOO BLUSH Q122 (AI) (P)

YALGOO BANDIT J079 (AI) (P)

YALGOO BLUSH L086 (P)

YALGOO BLUSH J335 (ET) (P)

\$ Index Values

Southern Self Replacing: +\$193

Northern Self Replacing: +\$183

Southern Baldy Maternal: +\$204

Northern Baldy Terminal: +\$149

Purchaser: .....

Price \$: .....

June 2023 Hereford BREEDPLAN																
CE (DIR)	CE (DTRS)	GL	BW	200	400	600	MCW	Milk	SS	DC	Cwt	EMA	Rib	RUMP	RBY%	IMF%
+5.9	+7.7	-0.3	+4.2	+45	+78	+101	+91	+15	+1.8	-3.3	+75	+5.7	+0.9	+0.8	+0.9	+1.2
49%	36%	76%	74%	70%	70%	73%	66%	56%	78%	38%	60%	53%	56%	60%	54%	59%

Traits Observed: GL,CE,BWT,200WT,400WT,600WT,SS,FAT,EMA,IMF,Genomics

Parent Verification: Sire: Verified, Dam: Verified

Notes: High profit heifers calf with sire potential. Long, balanced bull who has a calving ease shoulder and ideal balance of traits. You can kill all birds with one stone here. Suits cow and heifer matings. Comes highly recommended, as a Trust son with added quality and capacity. S024 is Top 30% or better for 13 traits. Easy calving - Top 30% CEDIR CEDRT. Good growth - Top 10% 200 400 600. Balanced carcass Top 30% EMA IMF CWT. High profit - Top 10% all indexes. Market/ system suitability: SM HGS BB F MSA MP

Lot 36

YALGOO SECRET S190 (P)

Ident: SODS190

Born: 13/10/2021

Eye Pigment: 100/100

ALLENDAL E YACKA (AI) (P)

ALLENDAL E ANZAC E114 (PP)

ALLENDAL E DAWN B22 (AI) (ET) (P)

Sire: WIRRUNA NIXON N168 (AI) (TW) (PP)

ELITE 4110 E212 (AI) (PP)

WIRRUNA DIDO H45 (AI) (PP)

WIRRUNA DIDO F371 (ET) (P)

ARDO HUSTLER 4110 (IMP NZL) (P)

ELITE 4110 H297 (AI) (PP)

ELITE FAVOURITE 0219 C133 (AI) (P)

Dam: YALGOO ZELDA N046 (AI) (P)

YALGOO BOULDER Y056 (S)

YALGOO ZELDA E48 (AI) (P)

YALGOO ZELDA Y082 (P)

\$ Index Values

Southern Self Replacing: +\$170

Northern Self Replacing: +\$157

Southern Baldy Maternal: +\$149

Northern Baldy Terminal: +\$99

Purchaser: .....

Price \$: .....

June 2023 Hereford BREEDPLAN																
CE (DIR)	CE (DTRS)	GL	BW	200	400	600	MCW	Milk	SS	DC	Cwt	EMA	Rib	RUMP	RBY%	IMF%
-5.4	+1.4	+1.0	+5.9	+47	+77	+102	+82	+17	+4.4	-4.6	+68	+4.7	+0.7	+1.1	+1.5	+0.6
45%	37%	68%	73%	69%	69%	71%	64%	56%	76%	41%	59%	51%	54%	58%	52%	56%

Traits Observed: BWT,200WT,400WT,600WT,SS,FAT,EMA,IMF,Genomics

Parent Verification: Sire: Verified, Dam: Not Tested

Notes: Lots 36 and 37 make the sale for out and out phenotype. Two Nixon sons with massive appeal, are growthy, soft, bold and wide. Both have A grade looks. High growth - Top 10% 200 400 600. High fertility - Top 5% SC Top 20% DC Market/ system suitability: MSA F HGS BB W



**Lot 37 YALGOO SESSION S261 (PP)**

Ident: SODS261

Born: 02/11/2021

Eye Pigment: 100/100

ALLENDALDE YACKA (AI) (P)  
 ALLENDALDE ANZAC E114 (PP)  
 ALLENDALDE DAWN B22 (AI) (ET) (P)  
 Sire: WIRRUNA NIXON N168 (AI) (TW) (PP)  
 ELITE 4110 E212 (AI) (PP)  
 WIRRUNA DIDO H45 (AI) (PP)  
 WIRRUNA DIDO F371 (ET) (P)  
 SHF WONDER M326 W18 ET (P)  
 NJW 73S W18 HOMETOWN 10Y (IMP USA) (P)  
 NJW P606 72N DAYDREAM 73S (P)  
 Dam: YALGOO PRINCESS P063 (AI) (P)  
 YALGOO BOULDER Z250 (P)  
 YALGOO PRINCESS F167 (AI) (P)  
 KESWICK PRINCESS B090 (P)

**\$ Index Values**

Southern Self Replacing: +\$139  
 Northern Self Replacing: +\$117  
 Southern Baldy Maternal: +\$124  
 Northern Baldy Terminal: +\$89

Purchaser: .....

Price \$: .....

June 2023 Hereford BREEDPLAN																
CE (DIR)	CE (DTRS)	GL	BW	200	400	600	MCW	Milk	SS	DC	Cwt	EMA	Rib	RUMP	RBY%	IMF%
-7.0	-0.4	+1.7	+7.9	+46	+76	+106	+98	+16	+2.7	-2.2	+62	+4.5	+1.2	+1.3	+0.2	+1.2
46%	38%	68%	74%	69%	69%	72%	65%	56%	77%	41%	60%	52%	56%	60%	54%	57%

Traits Observed: BWT,200WT,400WT,600WT,SS,FAT,EMA,IMF,Genomics

Parent Verification: Sire: Verified, Dam: Not Verified

Notes: I couldn't leave this Nixon powerhouse out. He's going to be the first bull you look at in the pen. Deep, mobile, sound, expressive and full of horse power. The Nixon's are so relevant to today's needs. If S261 is not breeding bull's he's going to breed some awesome grass finished steers. He's got the right fat cover and maturity pattern to ensure they finish uniformly on spec. Powerful growth - Top 10% 200 400 600 Market/ system suitability: MSA F HGS BB W

**Lot 38 YALGOO QUINOA S213 (PP)**

Ident: SODS213

Born: 17/10/2021

Eye Pigment: 100/100

DAYS ROBIN HOOD H38 (AI) (ET) (PP)  
 HUNTER LAKES LANCELOT L103 (AI) (ET) (PP)  
 HUNTER LAKES FANCY F7 (AI) (P)  
 Sire: YALGOO PIONEER Q047 (AI) (PP)  
 NJW 73S M326 TRUST 100W ET (IMP USA) (ET) (P)  
 YALGOO BUFFY M117 (AI) (ET) (P)  
 YALGOO BUFFY D191 (P)  
 REDGATE REDFORD D935 (AI) (P)  
 INJEMIRA REDFORD AI J205 (AI) (P)  
 INJEMIRA FIRST DAY G016 (P)  
 Dam: YALGOO BLUSH M220 (P)  
 YALGOO ZED F190 (P)  
 YALGOO BLUSH J137 (P)  
 YALGOO BLUSH A036 (P)

**\$ Index Values**

Southern Self Replacing: +\$129  
 Northern Self Replacing: +\$124  
 Southern Baldy Maternal: +\$119  
 Northern Baldy Terminal: +\$77

Purchaser: .....

Price \$: .....

June 2023 Hereford BREEDPLAN																
CE (DIR)	CE (DTRS)	GL	BW	200	400	600	MCW	Milk	SS	DC	Cwt	EMA	Rib	RUMP	RBY%	IMF%
-1.5	+1.1	-0.7	+3.9	+31	+42	+60	+25	+19	+2.5	-3.0	+34	+5.7	+2.3	+3.6	+0.7	+1.4
38%	30%	60%	71%	65%	66%	69%	60%	51%	75%	34%	55%	46%	51%	55%	48%	50%

Traits Observed: BWT,200WT,400WT,600WT,SS,FAT,EMA,IMF,Genomics

Parent Verification: Sire: Verified, Dam: Not Verified

Notes: Super complete, compact sire with carcass. Another bull that has demanded inclusion through his excellent phenotype. Dark, thick moderate bull who will improve type. S213's progeny will also excel in a merit based grading system. Prototype Supermarket bull. Superior type. MSA strength carcass - Top 15% IMF EMA Top 5% FAT. Market/ system suitability: SM MSA F BB W

**Lot 39 YALGOO SENTRY S056 (PP)**

Ident: SODS056

Born: 27/08/2021

Eye Pigment: /

ALLENDALDE ANZAC E114 (PP)  
 WIRRUNA MATTY M288 (AI) (ET) (PP)  
 WIRRUNA CIRCLE H13 (AI) (PP)  
 Sire: YALGOO NEBRASKA Q032 (AI) (PP)  
 NJW 73S W18 HOMETOWN 10Y (IMP USA) (P)  
 YALGOO PRINCESS L062 (AI) (P)  
 YALGOO PRINCESS F167 (AI) (P)  
 NJW 73S W18 HOMETOWN 10Y (IMP USA) (P)  
 NJW 135U 10Y HOMETOWN 27A (IMP USA) (P)  
 NJW 4037 34S DURANGO VACA 135U (P)  
 Dam: YALGOO TIGRESS Q260 (AI) (P)  
 CHURCHILL KICKSTART 501C (IMP USA) (AI) (ET) (P)  
 YALGOO TIGRESS N004 (AI) (P)  
 YALGOO TIGRESS L265 (ET) (P)

**\$ Index Values**

Southern Self Replacing: +\$177  
 Northern Self Replacing: +\$172  
 Southern Baldy Maternal: +\$190  
 Northern Baldy Terminal: +\$138

Purchaser: .....

Price \$: .....

June 2023 Hereford BREEDPLAN																
CE (DIR)	CE (DTRS)	GL	BW	200	400	600	MCW	Milk	SS	DC	Cwt	EMA	Rib	RUMP	RBY%	IMF%
+6.4	+5.9	-7.8	+2.1	+37	+60	+84	+61	+11	+2.8	-1.4	+59	+5.7	+1.6	+1.5	+0.4	+2.0
37%	30%	63%	67%	65%	65%	68%	61%	50%	75%	33%	55%	47%	51%	55%	48%	51%

Traits Observed: 200WT,400WT,600WT,SS,FAT,EMA,IMF,Genomics

Parent Verification: Sire: Verified, Dam: Not Verified

Notes: Deep, thick herd improver who scanned the house down. Heifers calf with an outcross pedigree and ideally balanced data gives you so many options with this bull. Definitely well placed to excel in a program striving for high meat quality. Great calving ease - Top 25% CEDIR CEDRTS BW. Top 1% GL. Niche meat quality - Top 5% IMF Top 15% EMA. Market/ system suitability: SM MSA F BB W

**Lot 40 YALGOO PANCHO S130 (P)**

Ident: SODS130

Born: 01/10/2021

Eye Pigment: 100/095

ALLENDALDE ANZAC E114 (PP)  
 WIRRUNA MATTY M288 (AI) (ET) (PP)  
 WIRRUNA CIRCLE H13 (AI) (PP)  
 Sire: **YALGOO QUOTA Q006 (AI) (PP)**  
 CHURCHILL KICKSTART 501C (IMP USA) (AI) (ET) (P)  
 YALGOO TIGRESS N030 (AI) (P)  
 YALGOO TIGRESS Z241 (H#)

REDGATE REDFORD D935 (AI) (P)  
 INJEMIRA REDFORD AI J205 (AI) (P)  
 INJEMIRA FIRST DAY G016 (P)  
 Dam: **YALGOO BETTE M024 (P)**  
 YALGOO VICEROY E316 (ET) (PP)  
 YALGOO BETTE J284 (P)  
 YALGOO BETTE E232 (P)

**\$ Index Values**

Southern Self Replacing: +\$157  
 Northern Self Replacing: +\$147  
 Southern Baldy Maternal: +\$148  
 Northern Baldy Terminal: +\$106

Purchaser: .....

Price \$: .....

June 2023 Hereford BREEDPLAN																
CE (DIR)	CE (DTRS)	GL	BW	200	400	600	MCW	Milk	SS	DC	Cwt	EMA	Rib	RUMP	RBY%	IMF%
-3.0	+0.9	-4.3	+5.7	+43	+68	+96	+80	+13	+3.0	-1.9	+61	+5.2	+1.1	+1.6	+1.0	+1.4
40%	32%	62%	73%	66%	67%	70%	62%	52%	76%	35%	56%	48%	52%	56%	49%	51%

Traits Observed: BWT,200WT,400WT,600WT,SS,FAT,EMA,IMF,Genomics

Parent Verification: Sire: Verified, Dam: Not Verified

**Notes:** I was pretty keen to end with a prototype of the offering. S130, is deep, thick and mobile. His dam is that cow that comes through the tough times in a condition score higher than her mates. Doing more with less is going to be increasingly important with the challenges facing the beef industry. The maternal efficiency of cows like lot 40's dam give Hereford and Hereford cross cattle a competitive edge. No breed does more with less. Balanced performance - 13 traits that are Top 30% or better. Market/ system suitability: SM MSA F HGS BB







Ivybank Poll Hereford Stud was founded in 1975. Carcase and doing ability has always been at the forefront of our breeding The drought has really worked out the cattle that survive in our climate.

## Lot 41 IVY BANK SAXBY S021 (AI) (P)

Ident: AHGS021

Born: 15/09/2021

KCF BENNETT ENCORE Z311 (ET) (PP)  
NJW 79Z Z311 ENDURE 173D (IMP USA) (ET) (PP)  
BW 91H 100W RITA 79Z (ET) (P)  
Sire: **KANIMBLA POWER QUEST Q006 (AI) (PP)**  
KANIMBLA POWER PLAY J066 (AI) (P)  
KANIMBLA CHILLIE WOMAN M009 (P)  
KANIMBLA HOT CHILLI WOMAN G95 (P)  
  
TYCOLAH LYNWOOD H184 (P)  
TYCOLAH OAKDALE L31 (S)  
TYCOLAH ADVANCE G118 (H#)  
Dam: **IVY BANK ECLIPSE P043 (P)**  
SUGARLOAF HARRISON H123 (AI) (PP)  
IVY BANK ECLIPSE L22 (P)  
IVY BANK ECLIPSE C30 (P)

### \$ Index Values

Southern Self Replacing: +\$153  
Northern Self Replacing: +\$135  
Southern Baldy Maternal: +\$150  
Northern Baldy Terminal: +\$107

Purchaser: .....

Price \$: .....

June 2023 Hereford BREEDPLAN																
CE (DIR)	CE (DTRS)	GL	BW	200	400	600	MCW	Milk	SS	DC	Cwt	EMA	Rib	RUMP	RBY%	IMF%
+0.2	+1.6	+1.6	+5.6	+36	+64	+90	+75	+17	+1.6	-3.0	+57	+5.3	+1.4	+1.6	+0.6	+1.1
40%	27%	57%	66%	62%	56%	56%	48%	43%	54%	25%	44%	37%	42%	44%	37%	42%

Traits Observed: BWT,200WT

Parent Verification: Sire: Not Tested, Dam: Not Tested

Notes: Great Shape Well Muscled Dark Pigmented Heifers 1st Calf Above average for all indexes

## Lot 42 IVY BANK SAPPER S029 (P)

Ident: AHGS029

Born: 22/09/2021

KCF BENNETT 3008 M326 (P)  
NJW 73S M326 TRUST 100W ET (IMP USA) (ET) (P)  
NJW P606 72N DAYDREAM 73S (P)  
Sire: **YALGOO JET J157 (AI) (P)**  
SOUTH BUKALONG WALLACE 2 (P)  
YALGOO DONNA BELLA D040 (AI) (P)  
YALGOO DONNA BELLA W059 (P)  
  
KIDMAN BLIGH D99 (P)  
KANIMBLA FULL BOTTLE H117 (PP)  
KANIMBLA MARITANA B06 (AI) (P)  
Dam: **IVY BANK CHERRY M006 (P)**  
IVY BANK CLAUDE (P)  
IVY BANK CHERRY E30 (P)  
IVY BANK CHERRY A26 (AI) (P)

### \$ Index Values

Southern Self Replacing: +\$148  
Northern Self Replacing: +\$136  
Southern Baldy Maternal: +\$152  
Northern Baldy Terminal: +\$110

Purchaser: .....

Price \$: .....

June 2023 Hereford BREEDPLAN																
CE (DIR)	CE (DTRS)	GL	BW	200	400	600	MCW	Milk	SS	DC	Cwt	EMA	Rib	RUMP	RBY%	IMF%
+2.7	+5.5	+0.2	+5.0	+38	+59	+81	+71	+16	+2.3	-3.1	+51	+3.4	+0.4	+0.2	+1.1	+1.1
43%	35%	55%	71%	65%	60%	61%	54%	51%	58%	34%	55%	48%	52%	54%	44%	52%

Traits Observed: BWT,200WT

Parent Verification: Sire: Not Tested, Dam: Not Tested

Notes: Very Well Muscled Dark with above average indexes

## Lot 43 IVY BANK SPARTICUS S019 (P)

Ident: AHGS019

Born: 10/09/2021

KCF BENNETT 3008 M326 (P)  
NJW 73S M326 TRUST 100W ET (IMP USA) (ET) (P)  
NJW P606 72N DAYDREAM 73S (P)  
Sire: **YALGOO JET J157 (AI) (P)**  
SOUTH BUKALONG WALLACE 2 (P)  
YALGOO DONNA BELLA D040 (AI) (P)  
YALGOO DONNA BELLA W059 (P)  
  
CB 57U CAN DOO 102Y (IMP CAN) (P)  
IVY BANK JOKER J59 (AI) (ET) (P)  
REMITALL MARVEL 78T (IMP CAN) (P)  
Dam: **IVY BANK MAGIC L32 (P)**  
COLDSTREAM HURRICANE (AI) (S)  
IVY BANK MAGIC H57 (P)  
IVY BANK MAGIC Z09 (P)

### \$ Index Values

Southern Self Replacing: +\$154  
Northern Self Replacing: +\$138  
Southern Baldy Maternal: +\$162  
Northern Baldy Terminal: +\$115

Purchaser: .....

Price \$: .....

June 2023 Hereford BREEDPLAN																
CE (DIR)	CE (DTRS)	GL	BW	200	400	600	MCW	Milk	SS	DC	Cwt	EMA	Rib	RUMP	RBY%	IMF%
+4.7	+5.9	-0.1	+3.5	+35	+55	+77	+55	+24	+2.4	-3.9	+52	+3.3	+1.3	+1.3	+0.6	+1.2
43%	35%	54%	71%	66%	60%	61%	54%	51%	56%	33%	54%	47%	50%	52%	43%	51%

Traits Observed: BWT,200WT

Parent Verification: Sire: Not Tested, Dam: Not Tested

Notes: Very tidy underneath with a Great set of Testicles dark & well marked Above average for all Indexes Good Heifer Bull



## Lot 44 IVY BANK SEXPOT S035 (P)

Ident: AHGS035

Born: 03/10/2021

KCF BENNETT 3008 M326 (P)  
NJW 73S M326 TRUST 100W ET (IMP USA) (ET) (P)  
NJW P606 72N DAYDREAM 73S (P)  
Sire: YALGOO JET J157 (AI) (P)  
SOUTH BUKALONG WALLACE 2 (P)  
YALGOO DONNA BELLA D040 (AI) (P)  
YALGOO DONNA BELLA W059 (P)  
  
KIDMAN BLIGH D99 (P)  
KANIMBLA FULL BOTTLE H117 (PP)  
KANIMBLA MARITANA B06 (AI) (P)  
Dam: IVY BANK ECLIPSE M035 (P)  
YALGOO BRUISER E106 (AI) (P)  
IVY BANK ECLIPSE H41 (P)  
IVY BANK ECLIPSE E67 (P)

### \$ Index Values

Southern Self Replacing: +\$131  
Northern Self Replacing: +\$121  
Southern Baldy Maternal: +\$135  
Northern Baldy Terminal: +\$96

Purchaser: .....

Price \$: .....

June 2023 Hereford BREEDPLAN																
CE (DIR)	CE (DTRS)	GL	BW	200	400	600	MCW	Milk	SS	DC	Cwt	EMA	Rib	RUMP	RBY%	IMF%
+3.5	+5.3	+0.6	+4.4	+31	+48	+65	+52	+15	+1.9	-3.4	+39	+2.9	+0.5	+0.4	+0.9	+1.0
44%	36%	56%	72%	66%	60%	61%	54%	52%	57%	34%	54%	47%	51%	53%	43%	51%

Traits Observed: BWT,200WT

Parent Verification: Sire: Not Tested, Dam: Not Tested

Notes: A very soft bull Easy doing Red Eyed 7 Dark coloured

## Lot 45 IVY BANK SHERWOOD S010 (P)

Ident: AHGS010

Born: 17/04/2021

KCF BENNETT 3008 M326 (P)  
NJW 73S M326 TRUST 100W ET (IMP USA) (ET) (P)  
NJW P606 72N DAYDREAM 73S (P)  
Sire: YALGOO JET J157 (AI) (P)  
SOUTH BUKALONG WALLACE 2 (P)  
YALGOO DONNA BELLA D040 (AI) (P)  
YALGOO DONNA BELLA W059 (P)  
  
KIDMAN BLIGH D99 (P)  
KANIMBLA FULL BOTTLE H117 (PP)  
KANIMBLA MARITANA B06 (AI) (P)  
Dam: IVY BANK MAGIC M043 (P)  
YALGOO BURGHER E102 (P)  
IVY BANK MAGIC J01 (P)  
IVY BANK MAGIC B05 (TW) (P)

### \$ Index Values

Southern Self Replacing: +\$135  
Northern Self Replacing: +\$127  
Southern Baldy Maternal: +\$141  
Northern Baldy Terminal: +\$101

Purchaser: .....

Price \$: .....

June 2023 Hereford BREEDPLAN																
CE (DIR)	CE (DTRS)	GL	BW	200	400	600	MCW	Milk	SS	DC	Cwt	EMA	Rib	RUMP	RBY%	IMF%
+4.3	+5.8	+0.9	+4.0	+31	+49	+67	+57	+12	+1.7	-3.1	+42	+3.1	+0.7	+0.6	+0.8	+1.0
43%	35%	55%	70%	64%	59%	60%	54%	51%	57%	34%	54%	47%	51%	53%	43%	51%

Traits Observed: BWT,200WT

Parent Verification: Sire: Not Tested, Dam: Not Tested

Notes: A very dark bull with Great Testicles Low Birth weight Good for heifers

## Lot 46 IVY BANK SANTOS S040 (P)

Ident: AHGS040

Born: 12/10/2021

KCF BENNETT 3008 M326 (P)  
NJW 73S M326 TRUST 100W ET (IMP USA) (ET) (P)  
NJW P606 72N DAYDREAM 73S (P)  
Sire: YALGOO JET J157 (AI) (P)  
SOUTH BUKALONG WALLACE 2 (P)  
YALGOO DONNA BELLA D040 (AI) (P)  
YALGOO DONNA BELLA W059 (P)  
  
DEBARRY OLYMPUS A8 (S)  
SUGARLOAF HARRISON H123 (AI) (PP)  
MT RAVEN MARINDA D321 (P)  
Dam: IVY BANK MINERVA M045 (P)  
IVY BANK CLAUDE (P)  
IVY BANK MINERVA E12 (P)  
IVY BANK MINERVA A32 (P)

### \$ Index Values

Southern Self Replacing: +\$132  
Northern Self Replacing: +\$117  
Southern Baldy Maternal: +\$135  
Northern Baldy Terminal: +\$96

Purchaser: .....

Price \$: .....

June 2023 Hereford BREEDPLAN																
CE (DIR)	CE (DTRS)	GL	BW	200	400	600	MCW	Milk	SS	DC	Cwt	EMA	Rib	RUMP	RBY%	IMF%
+1.7	+4.6	+0.4	+4.2	+34	+52	+75	+63	+16	+2.2	-2.4	+47	+2.6	+0.2	-0.1	+0.9	+0.9
43%	35%	55%	71%	66%	60%	61%	53%	52%	57%	33%	54%	47%	51%	53%	43%	52%

Traits Observed: BWT,200WT

Parent Verification: Sire: Not Tested, Dam: Not Tested

Notes: A very soft easy doing bull with more scope

## CHAPTER ONE - PRELIMINARY

1. (a) A vendor is bound by these terms and conditions by offering livestock for sale by auction.
- (b) An agent (which includes an auctioneer) is bound by these terms and conditions by conducting an auction sale.
- (c) A buyer is bound by these terms and conditions by bidding at auction.
2. In these terms the expression auctioneer, agent, buyer and vendor respectively includes the servants, contractors, agents of each of them. The auctioneer, agent, buyer and vendor shall be wholly responsible for the acts and omissions of their respective servants, contractors and agents. The term 'auctioneer' includes, so far as the law and context permits, the vendor's agent.
- (b) When used in these terms the expressions 'companion animals' means all animals originating from a property on a particular day.
- Where lots are split and sent to multiple establishments, then all of these animals shall be regarded as companions.
3. The following applies in interpreting these terms and conditions:
  - (a) The following words have the following meanings:
    - Fees means all levies, charges, fees, costs and other expenses incurred or relating to these terms and conditions and the sale and purchase of livestock including, without limitation, transaction levies, yard and weigh dues, cartage, advertising and rebates, and whether paid for, or incurred, by the agent; Livestock means animals auctioned pursuant to these terms and conditions; and Price means the amount at which the lot has been sold to the buyer referred to in clause 7 of these terms and conditions
    - (i) plus any Fees and other expenses incurred in relation to the purchase of livestock that are payable by the buyer; and
    - (ii) plus any GST added in accordance with clause 12.
    - (b) These terms and conditions are subject to legislation or regulation in the State in which the auction is conducted and in the event of any conflict then the legislation or regulation will prevail. The provisions of these terms and conditions are in addition to, and do not derogate from, the duties and rights of vendors, agents and buyers set out in legislation and regulation in the State in which the auction is conducted.

## CHAPTER TWO - STANDARD TERMS OF SALE

4. Subject to any reserve price, and to the right, prior to the fall of the hammer, of the vendor to withdraw any lot without declaring the reserve, the highest bidder shall be the buyer.
5. The auctioneer has the right to bid on behalf of the vendor provided that right is notified prior to the commencement of the sale and is subject to State law.
6. A bid cannot be made or accepted after the fall of the hammer unless, in accordance with clause 8, the auctioneer decides to put the lot up again.
7. The last price called by the auctioneer at the fall of the hammer shall be the amount at which the lot has been sold.
8. In the event of a disputed bid, the auctioneer is the sole arbitrator of the successful bidder or the auctioneer may decide to put the lot up again. The auctioneer's decision is final.
9. The auctioneer may refuse to accept any bid which, in the auctioneer's opinion, is not in the best interests of the vendor and need not give reasons for doing so. The minimum bid for live weight selling is 0.2 of a cent (\$0.002).
10. A bidder shall be deemed to be a principal unless, prior to bidding, the bidder has given to the auctioneer a copy of written authority to bid for or on behalf of another person.
11. The successful bidder at a livestock auction sale must give to the auctioneer at the fall of the hammer:
  - (a) the purchaser's name; or
  - (b) the bid card number which identifies the purchaser; or
  - (c) the name of the person on whose behalf the successful bid was made; and (d) the Property Identification Code (known as the 'PIC') of destination.
12. The auction shall be conducted on the basis that the bid price shall be exclusive of Goods and Services Tax (GST). GST shall be added after the fall of the hammer for those sales subject to GST.
13. As soon as practicable after the fall of the hammer, the buyer shall if requested by the agent, sign the agreement for sale.
14. If a buyer does not comply with any of these terms and conditions, which includes the requirements of State law, any livestock knocked down to that buyer may be re-sold by public auction or private contract in whatever lots and manner the auctioneer decides. The re-sale may be with or without notice and shall be at the buyer's risk. The buyer is responsible for all loss and expense arising out of a re-sale and is not entitled to any resulting profit.
15. The buyer of livestock must pay the agent the full amount of the purchase price in immediate funds on receipt of a tax invoice. Payment is required prior to delivery unless some other time for payment is specified in a written agreement between the buyer and the auctioneer that was made before the fall of the hammer.
16. No person may bid unless, prior to the commencement of the sale, that person has made arrangements satisfactory to the auctioneer for payment for livestock purchased. If bids in breach of this condition are inadvertently accepted, delivery shall not be given until the purchase money is paid and any law, rule or practice to the contrary is accordingly negated as far as possible.
17. (a) Cattle sold on a liveweight basis that are weighed pre-sale are at the risk and expense of the buyer upon the fall of the hammer.
- (b) Cattle sold on a liveweight basis that are weighed post-sale are at the risk and expense of the buyer immediately after weighing.
- (c) All livestock other than cattle sold on a liveweight basis are at the risk and expense of the buyer upon the fall of the hammer.
18. (a) Subject to this clause the sale is complete on the fall of the hammer.
- (b) The time for rejection is the time commencing at the fall of the hammer and ending at the first of:
  - (i) delivery is taken by a representative of the buyer;
  - (ii) departure of the animal from the purchaser's delivery pen; or
  - (iii) one hour after the last animal is:
    - a. in the case of pre-sale weighing, sold; or
    - b. in the case of post-sale weighing, weighed.
- (c) During the time for rejection the buyer may reject any animal which is lame, blind or diseased where that condition existed prior to the fall of the hammer but could not be reasonably observed when the animal was in the selling pen.
- (d) If the purchaser rejects an animal during the time for rejection then the sale of that animal is cancelled and the animal is returned to the vendor or sold at such price as the purchaser and the agent may agree.
- (e) This sub-clause applies only to cattle which are sold in Queensland at auction for slaughter. The agent has responsibility for the prevention of loss or escape (but not death, sickness or injury) of those cattle from the time of the fall of the hammer, through delivery to and from the scales, to the buyer's delivery pen and on to the buyer's nominated transport. This responsibility ends at the earlier of those cattle boarding the buyer's nominated transport or sunset on the day after the sale. This sub-clause does not apply if the agent makes an announcement to that effect prior to sale.
19. (a) Subject to the right of rejection in Clause 18, all conditions and warranties expressed or implied by law are hereby excluded from the sale to the extent that the law allows. All lots are open for inspection prior to the commencement of the sale and are sold with all faults, if any. No compensation shall be given for any faults, imperfections, errors of description, number in or of any lots sold or otherwise.
- (b) Any claim or objection arising out of an error or misdescription in the provision of relevant information in terms of legislation or regulation concerning the National Livestock Identification Scheme (NLIS) must be made by 5:00pm on the seventh day after the fall of the hammer. No objection, requisition or claim against the vendor or agent in respect of such error or misdescription can be made after that time.
- (c) Any statements made by the vendor or the auctioneer whether in writing or orally to the effect that any female has been pregnancy tested or scanned positive shall mean and require only that a certificate in writing shall be supplied to the buyer signed by a qualified veterinary surgeon or certified scanner certifying that the said female has been tested or scanned on the date specified in the certificate and that in the opinion of the surgeon or scanner the female was pregnant on that date.
- (d) For cattle, the agent undertakes to make every reasonable effort to ensure that any NLIS cattle device number is transferred from the saleyard account to the purchasers account on the NLIS database no later than midnight on the day of the sale.
- (e) Where livestock have a food safety or market eligibility status derived from the NVD and/or the NLIS/ERP database, the agent will inform the buyers by presale catalogue in conjunction with vendor branding and/or announce the status prior to the offering of those lots.
20. If delivery is made to, or possession obtained by, the buyer or its representative before full payment of the Price, then until full payment is received, the buyer:
  - (a) does not acquire title to the livestock;
  - (b) holds the livestock as bailee only for the vendor;
  - (c) must act in a fiduciary capacity in its relationship with the vendor;
  - (d) must store the stock separately or so that they are readily distinguishable from other livestock owned by the buyer;
  - (e) is responsible for the safety and well being of the livestock;
  - (f) may make a bona fide sale for market value of any or all of the livestock. As between the buyer and the subsequent buyer, the sale shall be made by the buyer in its own name and not as agent for the vendor, however as between the vendor and buyer, the sale shall be made as bailee and agent for the vendor; and
- (g) must keep and account for the proceeds of any subsequent sale separately from its other money and hold those proceeds, together with the benefits of any rights against subsequent buyers, on trust for the vendor.
21. In addition to clause 20, if payment is not made according to clause 15, but delivery has been made to, or possession obtained by, the buyer or its representative:
  - (a) The vendor or its agent may repossess and resell the livestock and enter property owned or occupied by the buyer or its representative if necessary to do so; and
  - (b) Interest may be charged at the rate usually charged by the agent for overdue accounts on any amounts which remain owing at any time.
22. The buyer may not make any claim against the vendor for actions by the vendor or its agent under clauses 20 or 21 and indemnifies the vendor and its agent against any loss, damage, costs, expenses, penalties, fines or claims suffered by the vendor, the agent or any person or entity arising from the vendor exercising its rights under clauses 20 or 21.
- 23.1. Clause 23 applies whenever the agent pays the vendor before being paid by the buyer, which the agent is not bound to do. The agent is then the del credere agent of the vendor at law.
- 23.2. The vendor hereby gives notice to the buyer of the assignments referred to in clause 23.3.
- 23.3. When this clause applies, in addition to any rights of the agent that arise by operation of the law, the parties agree that, subject to clause 23.6 the agent is subrogated to all rights of the vendor under these terms and conditions against the buyer.
- 23.4. Title to the livestock does not pass to the agent or a nominee of the agent unless the agent, by written notice to the vendor, notifies the vendor that it is to be transferred to the agent or a nominee of the agent.
- 23.5. The vendor acknowledges that the agent may take enforcement, repossession or other action to recover any livestock for which the buyer has not paid in full, or the Price of such livestock, owing by the buyer under these terms and conditions:
  - (a) when this clause does not apply, as agent of the vendor (including by reselling the livestock); and

- (b) when this clause applies, on the agent's own behalf exercising the rights of the vendor by subrogation or assignment under these terms and conditions (whether in the vendor's name or not) and, where title to the livestock has not passed to the agent, by selling the livestock as agent of the vendor without the agent having to account to the vendor for the proceeds of sale.
- 23.6. The agent may at any time, assign, transfer, securitise or otherwise dispose of all or any of its rights under these terms and conditions and any debts created pursuant to it (including, without limitation, the rights assigned to it under clause 23.3).
- 23.7. The vendor hereby irrevocably appoints the agent as the vendor's attorney to:
  - (a) do at any time and in any manner as the agent thinks fit all acts necessary or desirable to perfect or improve the rights and interests afforded, or intended to be afforded, to the agent under these terms and conditions; and
  - (b) appoint one or more sub-attorneys to do anything that the agent may do as the vendor's attorney.
- 23.8. These terms and conditions do not render the agent liable to the buyer as vendor nor entitle the buyer to set off against the agent any right the buyer may have against the vendor or otherwise.
- 23.9. The buyer acknowledges that the provisions of this clause 23 are intended solely for the benefit of the agent (and its assigns) and the vendor. The liabilities and obligations of the buyer will not be in any way affected:
  - (a) by this clause 23, other than as it expressly provides; or
  - (b) by the failure of the agent or the vendor or either of them to comply with the terms of this clause 23.
- 23.10. The buyer must pay all amounts payable to the vendor or the agent under these terms and conditions without any deduction, withholding, set off or counterclaim whatsoever, whether the benefit of a deduction, withholding, set off or counterclaim is alleged to exist in favour of the buyer as against the vendor or the agent in any capacity whatsoever or any other person including any assignor of the vendors or the buyers interests under these terms and conditions.
24. (a) The agent agrees that he is liable to pay to the vendor the Price, less such commission as is agreed between the vendor and the agent, and in the absence of any agreement such amount as is reasonable, and less the Fees that are payable by the vendor that were incurred by the agent on behalf of the vendor in relation to the sale of the livestock.
- (b) In the event that the buyer pays the Price or part of it direct to the vendor then the agent has no liability to the vendor for the amount of such payment. Further, if the agent pays the vendor any amount which the buyer also pays direct to the vendor in respect of the same livestock, then the vendor must repay the agent that amount and the agent may debit that amount to an account held in the name of the vendor by the agent.
- (c) Regardless of whether or not a sale has occurred the agent may, but is not under obligation so to do, instead of deducting payments owed to it by the vendor, debit the amount of the commission and fees to an account held in the name of the vendor by the agent.
25. The auctioneer has been retained by the vendor as auctioneer for the purpose of selling the livestock comprised in the lots. The terms of engagement between the auctioneer and the vendor do not extend to the provision of advice by the auctioneer to the vendor in relation to the safety or otherwise of the sale ring, the saleyards and the surrounding environments.

## CHAPTER THREE - VENDOR WARRANTY FOR CORRECT PRESENTATION AND DECLARATION

26. This chapter applies only in the case of livestock and their companion animals sold at auction for slaughter when the buyer is the slaughterer and the livestock are transported direct from the sale yard to the meatworks at which they are slaughtered. This chapter does not apply if the buyer is a trader who subsequently resells the livestock to a slaughterer. A slaughterer is any person who pays the AMP Processor levy.
27. The warranty of a vendor is that livestock and their companion animals offered for sale at auction:
  - (a) pass AQIS and other regulatory authority requirements and inspections at the time of slaughter;
  - (b) are of merchantable quality;
  - (c) carry an NLIS device in accordance with State law;
  - (d) in the case where a representation has been made in the pre-sale catalogue that the livestock have particular characteristics or are fit for a particular purpose or market, and such representations are based on information in the National Vendor Declaration, the livestock will have those characteristics or will be fit for the particular purpose or market; and
  - (e) all information in any National Vendor Declaration provided by the vendor is true, complete and correct in all material respects.
28. In the event of a breach by the vendor of the vendor's warranty and provided such breach is notified by the buyer to the agent by 5:00pm on the 7th day after the fall of the hammer then the buyer is not liable to pay the portion of the Price of such of the vendor's livestock to which the breach applies.
29. However if the breach by the vendor is such that the livestock are not rejected outright but are instead downgraded then the buyer will pay the value of the livestock at their next highest and best use.
30. In the case of a breach by the vendor of the vendor's warranty then the vendor will also be liable to the buyer for any further losses which the buyer might establish but the buyer will take all reasonable steps in co-operation with the agent and vendor to mitigate both the effect of the breach and the amount of any loss.
31. Where a sentinel animal of a lot tests positive for chemical residue, and provided such test is certified and notified as required by these vendor warranty terms, then:
  - (a) the buyer will be entitled to delay payment for the price of all livestock in that lot; or
  - (b) the vendor has the option, at the vendor's cost, of collecting the companion animals and returning them to the vendor's property; or of having the livestock slaughtered in which event the risk of further condemnations will be that of the vendor. Where product integrity is potentially jeopardised, the Processor has the right to refuse slaughter and send the livestock back to the consigning property at the vendor's cost.
32. The auctioneer is liable to the buyer in respect of any breach of the vendor's warranty arising out of:
  - (a) any error, by the auctioneer, of transcription of information from the National Vendor Declaration completed by the vendor to the pre-sale catalogue or the buyers post-sale summary;
  - (b) any failure by the auctioneer to notify the buyer, prior to bidding, of any breach by the vendor of the warranty of the vendor if the buyer establishes that the agent knew of such breach prior to the sale; and
  - (c) any failure by the auctioneer to disclose prior to bidding, and in the pre-sale catalogue, that the vendor has failed to provide a National Vendor Declaration that is complete in all material aspects.
33. **CHAPTER FOUR - OWNERS RISK FOR CONDITION OF CATTLE**
- This chapter applies only in the case of cattle and their companion animals sold at auction for slaughter when the buyer is the slaughterer and the cattle are transported direct from the sale yard to the meatworks at which they are slaughtered. This chapter does not apply if the buyer is a trader who subsequently resells cattle to a slaughterer. A slaughterer is any person who pays the AMP Processor levy.
34. Owners risk reflects the producer's responsibility to provide slaughter cattle for sale that are fit for human consumption. Cattle are fit for human consumption if they are not condemned as unfit by AQIS. Owners risk applies if the condemnation is due to a condition in the animal which the buyer establishes, by the AQIS certificate, existed prior to the fall of the hammer.
35. A buyer with the benefit of owners risk protection is not liable to pay the Price of that animal to the vendor. The buyer remains nevertheless liable for all costs incurred after the fall of the hammer in transport, slaughter, testing and disposal of the animal.
36. Owners risk protection is available to the buyer of cattle to which this chapter applies if all of the following are satisfied:
  - (a) a certificate is issued by AQIS which states the relevant NLIS RFID tag number and PIC, the date of the certificate, the reason for condemnation and that the reason for condemnation existed prior to the fall of the hammer;
  - (b) the certificate is received by the selling agent either in its original form or by fax by 5:00pm on the 7th day after the fall of the hammer; and
  - (c) if the condemnation is due to chemical residue the certificate follows testing in an AQIS approved laboratory which establishes maximum residue limits in excess of the Australian limit.
37. Owners risk does not apply, and the buyer must pay for the cattle, if the reason for condemnation is any of the following:
  - (a) bruising,
  - (b) fever,
  - (c) partial condemnation, or
  - (d) emaciation.

## CHAPTER FIVE - NOTICES REQUIRED BY STATE LEGISLATION

### NSW Legislation

Property, Stock and Business Agents Act 2002 Warnings Penalties for collusive practices. It is an offence against the Property, Stock and Business Agents Act 2002 for a person to do any of the following as a result of a collusive practice, or to induce or attempt to induce another person by a collusive practice to do any of the following:

- (i) to abstain from bidding; or
  - (ii) to bid to a limited extent only; or
  - (iii) to do any other act that might prevent free and open competition.
- Severe penalties may be imposed on persons convicted of collusive practices. The auctioneer has the right to make one bid on behalf of the vendor if the auctioneer clearly and precisely announces that fact prior to the sale.

### Tasmanian Legislation

The auctioneer must not appear to acknowledge a dummy bid. A buyer must not give, agree to give or offer a gift or other consideration to a person for abstaining from bidding and a person must not accept any gift or consideration for abstaining from bidding.

A person must not participate in collusive practices by way of making or receiving an unlawful promise to abstain from bidding, not to bid except to a limited extent or do any other thing which may prevent free and open competition.

### Western Australian Legislation - Auction Sales Act 1973 s31 NOTICE

It is an offence to:

- (i) induce or attempt to induce another person to abstain from bidding by means of a promise, expressed or implied, that the other person will have the right to elect to take over as buyer or to toss or draw lots to establish who is to become the owner;
- (ii) abstain or agree to abstain from bidding as a result of such a promise;
- (iii) knowingly enter or permit or cause to be entered in the auctioneer's record any name other than that of the actual successful bidder;
- (iv) enter in the auctioneer's record the name of the buyer other than that of the actual successful bidder; or
- (v) in the case of successful bidder supply wrong information as to the name of the buyer to the auctioneer or to any person, firm or corporation on whose behalf the sale is conducted. The vendor, or any person on behalf of the vendor, or the auctioneer have the right to make no more than three bids.

© 1 FEBRUARY 2011  
Australian Livestock & Property Agents Association Limited All rights reserved. Unauthorised reproduction in whole or in part is an infringement of copyright. These are recommended conditions of sale. They are provided to ALPA members as recommended terms and conditions only.



# BUYERS INSTRUCTION SLIP



Name .....

Address .....

--	--	--	--

Phone ..... Mobile .....

Email .....

Lots Purchased .....

Consign to .....

Insurance for the following period.....

Invoice to .....

Signature of buyer .....

**DELIVERY LOCATION** (MUD MAP)

**SELLING AGENTS**  
**Elders Ltd, Walcha**



# PROUDLY SUPPORTING YALGOO'S 62ND POLL HEREFORD BULL SALE

## ELDERS WALCHA

Elders Walcha have a dedicated local team committed to our clients and our community. Our team live your business like you do. Experience the difference and contact the Elders Branch today about all your agribusiness needs.

<b>Thomas Henry</b>	Branch Manager   District Wool Manager	0409 659 877
<b>Allan Laurie</b>	Livestock Sales	0455 821 394
<b>James Sharpe</b>	Livestock Sales	0409 272 490
<b>Joel Henry</b>	Rural Products Manager	0400 488 304
<b>Katrina Campbell</b>	Rural Products Sales Rep	0417 222 109
<b>Annmaree Fuller</b>	Sales Support Officer	0417 515 538
<b>Steph Young</b>	Sales Support Officer	0428 727 501

### Elders Walcha

**110w Fitzroy Street, Walcha NSW 2354**

p. (02) 6774 2600

e. [dg\\_walcha@elders.com.au](mailto:dg_walcha@elders.com.au)





## Directions to Yalgoo

**Yalgoo** is situated approximately 11kms north of Walcha on the Uralla Road



## Yalgoo Genetics

Jock Nivison 0497 762 977 | Grant Nivison (02) 6777 2525  
jock@yalgoogenetics.com.au | [yalgoogenetics.com.au](http://yalgoogenetics.com.au)

Ivy Bank | Allan Green 0408 469 568