



60th YALGOO BULL SALE

*In conjunction
with **Ivy Bank***

Monday 9th August 2021

Your Carcase Choice



CONTACTS FOR INSPECTIONS

(or from 11am on Sale day)

Grant Nivison: 02 6777 2525

Jock Nivison: 0497 762 977

Paul Jamieson: 0428 667 998

Brian Kennedy: 0427 844 047

Elders Walcha: 02 6774 2600

Paul Dooley: 0458 662 646

Angus Laurie: 0418 587 643

Nick Hall (Hall Ac): 0436 449 033

**Free delivery to
NSW, QLD, VIC and TAS.**

Elders



LOT 5



LOT 16



LOT 34



60th YALGOO BULL SALE

In conjunction with Ivy Bank

39 Stud Bulls

ALL SALE BULLS SEMEN TESTED

Videos of all lots available early July
yalgoogenetics.com.au

Monday 9th August 2021
Commencing 1:30pm

Light refreshments available at the sale.

JBAS Status - Yalgoo has level 7 JBAS accreditation
Serving Ability tested: 6/5/21

Sale Details: A rebate of 2% will be paid to outside agent introducing approved buyers in writing, 24 hours prior to commencement of the sale, accompanying them and settling within seven days of the sale.



This sale is interfaced with AuctionsPlus and will be conducted live online in real time. Bidding is available only to registered AuctionsPlus users. To bid you must register, preferable 24hrs before the sale. Contact AuctionsPlus on 02 9262 4222 for more information





WELCOME to **YALGOO 60th** **Performance Recorded Sale** **Your Carcase Choice!**

THANK YOU for taking time to consider the Yalgoo program. After 72 years of breeding and 60 years of sales; today more than ever we take our responsibility of adding genetics to your herd seriously. We strive to offer a complete program that covers all aspects of beef production.

We provide:

- ✓ Sound, functional bulls carrying superior genes
- ✓ Industry best quality assurance including:
 1. Independent structure and fertility testing on sale bulls
 2. Serving ability test on sale bulls
 3. Genotyped bulls
 4. Bluestar pre-sale vaccination program on sale bulls
 5. Semen tested bulls
 6. High data integrity (4.5 star Breedplan rating)
- ✓ Commercially, acceptable phenotype
- ✓ Unique bull depreciation model to control bull costs
- ✓ Industry best practise herd management

As the national herd re-build continues, beef prices remain atmospherically high. The July to August rainfall forecast is above average, meaning the competition on your livestock should remain robust into the spring. This is great news for those of you in the North who are relying on natural increase to rebuild. Meaning that there is a high probability you will still be able to capitalise on this historically high market. The combination of good seasons and high prices account for nearly 80% of the profit in a beef enterprise.

If you are going to invest in bulls this year, ensure they are from a genetic source that is making demonstrable genetic gain over an extended period. Over the past decade Yalgoo's genetic gain is nearly 1.7 times the

rate of gain of the average Hereford herd. Due to the cumulative nature of genetics this will result in an Internal Rate of Return on these genetics of more than 2 times that of a breed average producer.

To mark the special milestone of 60 years of sales, we have offered all of the elite sires from the 19 drop. We are not retaining sole ownership of any 19 drop bull's giving you access to the very best of the drop. This includes a half share in our lot 1 bull that is genetically one of the more unique bull's in the breed. There are 10 other lots that have been used at Yalgoo as yearlings. These bull's will accelerate phenotypic and genotypic gain in your herd.

We urge you to take a close look at these lots. They are proven and their sexual experience will ensure that they get more calves in the first cycle, which means more kg's come sale time, a tighter calving spread and higher overall herd fertility.

All lot's will be videoed on the 2nd of July and Video's will be available soon after on the HAL, Auctionsplus and Yalgoo websites.

Bull costs can be a major contributor to cost of production. The cost of genetics has been extreme in the past few years. Bull cost's per calf of \$200+ per calf are becoming more common. The investment risk of genetics is such that-

- ✓ The payback period is long and generally covers high and low beef cycles.

The only way to control this risk is for the bulls to last longer. This amortises your financial investment by producing more calves per bull and lowering the cost per calf born.

If you are buying Yalgoo bulls, our data demonstrates you will likely be producing a weaner calf 30 cents/kg cheaper than that of an Angus bull.



Along with cost of production - production is the most profit sensitive KPI. Due to price cycles, we need to ensure we are at a high level of production so we can capture price spikes when they occur. One of the key components of production is genetics. Genetics that allow you to run more cows that:

1. Don't eat you out of house and home
2. Have more calves:
 - a. That grow quickly
 - b. Meet market specifications

They say that we get better through adversity. I think the previous drought has certainly proven this adage with our cow herd. Large cows have drafted themselves out through this period. Not only through infertility but for diseconomies of scale. A large frame cow costs 20% more than a moderate frame cow. In a 500 head cow herd over 12 months on current feed prices this is \$200 000 more. Ask yourself can this big cow produce enough income to justify this? I believe the commercially disciplined seedstock sources from the north will move the mark for efficiency and fertility because of the drought we have just been through. By accessing genetics from an area that endured a "worst on record drought", the purchaser is accessing genetics that have had maximum paddock pressure on fertility. Cows that reconceived under tight joining's through these three years are inherently more fertile.

In the bull notes, I have again included recommendations on market/production system suitability. Please note the two new categories of Multi-purpose and Heifer Bulls. A summary of these recommendations is included within the catalogue.

2021 represents an opportunity to invest in some of the most proven, performance genetics in the breed. Prominent sires are Wirruna Matty, Hunter Lakes Lancelot, Tobruk Lennox and the exciting new sire – NJW Endure.

We are excited about the future of the whiteface breed. It's weight for age, efficiency and temperament are crucial profit driving traits. It's place as half of the most profitable beef animal (black baldy) in temperate Australia ensures its market share will increase. The Angus breeder's that are bold enough to trial some hybrid vigour will be duly rewarded with increased profitability by using contemporary, high performing Hereford genetics (Please see More Bang for your Black page for recent research on breed composition).

They say to have enjoyed your work is to have had a good life. The enjoyment that comes with working with the industry's quietest breed is reinforced every day we handle our cattle. Our cross-breeding client's, all say the same about our cattle. In a recent US beef survey, temperament was the number 1 trait of importance. If you want more enjoyment as well as more profit out of your beef herd, I encourage you to consider a Yalgoo bull.

We would like to thank everyone who has supported our program. We look forward to seeing you at our 60th. Stay safe.

COVID 19 – Please note we will be complying with Australian recommendations regarding our sale day. If you are concerned, please do not hesitate to contact us before the sale and we will show you around the bulls. This will also be a good opportunity to discuss your direction and ensure we are delivering the best bull for your program. Video's, independent structural/muscle scoring, genotyping, EBV's, AUCTIONSPLUS are all provided if you would prefer to bid remotely. We will be posting updates on our website and facebook page regarding COVID as the sale approaches.

R & D: Yalgoo has been fortunate enough to be one of the few seedstock herds involved in the Trans-Tasman Beef Cow Productivity Project; Trial Penalised Age at Puberty. The project's aim was to drill down into the DTC EBV and find more directly measured traits that may be more heritable surrounding cow fertility. The project is wrapped up and has uncovered potentially powerful evidence regarding age of puberty. We look forward to using this information to help breed more fertile cattle for our client's herds.

IMPORTANT NOTE: The guarantees/ production protocol provided within this catalogue are applicable to Yalgoo bulls only. Please speak to Alan Green for Ivy Bank protocol.

Does a higher beef price equate to a proportionally higher return for all beef producers?



I ask you to consider these following simple sums:

Assumptions:

2013 feeder steer price: \$2.00/kg

Angus Premium: 10 cents

Heterosis: 10%

2013	Angus	Black Baldy
Steer Weight (kg)	500	550 (10% Heterosis)
Price (\$/kg)	\$2.00	\$2.00
Premium (cents)	10	0
Gross (\$)	\$1050/hd	\$1100/hd
Income/100hd	\$105 000	\$110 000
Income difference/100hd	-\$5000	+\$5000
Income differential (%)	-2.4%	+2.4%

If we consider the initial question, then the answer is no. The black baldy producer is getting rewarded more than 2% extra over the pure bred producer in a high beef cycle. When the beef price is very low, a little bit of a premium can be helpful. However, when the price is historically high then production becomes increasingly important.

This is because regardless of what the market is doing; the fundamental profit drivers of beef production don't change. Fertility and weight in conjunction with stocking rate, drive profit faster than anything else.

Depending on how many maternal benefits you include in your heterosis, you gain a minimum of 10% in a two way breed split. This is fixed.

Assumptions:

2016 feeder steer price: \$3.50/kg

Angus Premium: 10 cents

Heterosis: 10%

2016	Angus	Black Baldy
Steer Weight (kg)	500	550 (10% Heterosis)
Price (\$/kg)	\$3.60/kg	\$3.50/kg
Premium (cents)	10 cents	0
Gross (\$)	\$1800/hd	\$1925/hd
Income/100hd	\$180 000	\$192 500
Income difference/100hd	-\$12 500	+\$12 500
Income differential (%)	-4.8%	+4.8%

There has never been a more important time to be cross breeding.

Where as we can see in the example above; the price premium is not fixed and actually diminishes as the beef price goes up.

In conclusion when the feeder steer price is \$2.00/kg live weight, the pure bred producer needs a price premium of 20 cents/kg to break even with the black baldy producer.

When the feeder steer price is \$3.50 /kg live weight, the pure bred producer needs a price premium of 35cents/kg to break even with the black baldy producer.

GET MORE !BANG! FOR YOUR BLACK

Heterosis: You are getting taxed if you don't utilise it

What is it and what does it do?

- Heterosis, hybrid vigor, or outbreeding enhancement, is the improved or increased function of any biological quality in a hybrid offspring. Achieved through the mixed genetic composition of parental genetic makeup
- Heterosis accelerates lowly heritable traits, that are not easily/quickly achieved in purebreds
- The following results are based on US research studies using genetically breed average Hereford bulls over Angus cows Vs genetically breed average Angus bulls over Angus cows

Why we need it?

1. F1 cow is 8% more efficient than pure bred cow (transforming grass milk) (USMARC)
2. F1 cow lives 38% longer than pure bred (USMARC)
3. F1 cow has 25% more production in kilograms of calf weaned (USMARC)
4. F1 female reaches puberty before a pure bred (MSU study)

Cost and Income Benefits

- Result: F1 female lives longer & is more fertile therefore there is a decrease in replacement costs
- Result: F1 female has an advantage in pregnancy rates of 7% (H R Heterosis Project)
- Result: F1 female more likely to get in calf as a two year & will produce more calves in her lifespan than a pure bred
- These attributes result in a 10% cost saving on cow production costs over a pure bred herd (US MARC)

Health Benefits of Heterosis

- Genetics control immune response and immunity
- Pure bred doubles up more of the undesirable immune-response genes (in breeding)
- Crossbreeding ensures more genetic diversity and optimal immune response
- Thus, a crossbred cow tends to have more optimum immune system function than a straight bred cow
- Results in a healthier mum producing better colostrums which results in a healthier and heavier calf (decrease in infant immune diseases and subclinical losses)


Real World Proof: Recent Studies

- Profitability studies undertaken on the merits of cross breeding in the leading purebred black herds of Simplot Livestock Co., Lacey Land and Livestock, Harris Ranch and Circle A Angus in the US
- All studies showed a marked increase in income of the Hereford sired progeny over the pure black progeny
- Harris Ranch findings: Through the first year of the multiyear study, the crossbred calves had a \$78/head advantage, compared to their straight bred peers (Table 1). There was a slight advantage to the crossbred (\$10.80/head) for increased weaning weight, but most of it came through feedlot and carcass performance.
- The Hereford-sired group had a definite advantage in average daily gain, dry-matter feed conversion and, ultimately, cost of gain compared to the Angus-sired group.

Traits	Angus Sired	Hereford Sired
Ranch		\$10.80
Back ground		\$14.10
Pre Feedlot		\$24.90
Feedlot		\$86.10
Carcase	\$33.27	
Feed lot and Carcase		\$52.83
Net Value Difference		\$77.73

Study conducted by Dave Daley and Sean Earley, California State University-Chico; cooperators are Lacey Livestock, CA; American Hereford Association; Harris Feeding Co.; Harris Ranch Beef Co.

If you need assistance in implementing a black baldy cross breeding program please contact Yalgoo or Herefords Australia.



If you are not crossbreeding, you are leaving 20-25% of production on the table. Does your pure bred premium cover this?



AIM

To assist you in selecting bulls; for your specific production system or target market.

RATIONALE

Although indexes are an important indication to the suitability for a specific market there are other factors that will determine whether that bull's progeny will be best fit for a specific market.

We have combined the genotype and phenotype to form our recommendation.

METHODOLOGY

Recommendations are our subjective opinion of the suitability of a certain bull for a specific market/production system.

We have used a combination of maturity type, Indexes, EBV's, visual muscle content, feedback from clientele/processors and raw data to form our recommendations.

DESCRIPTIONS

SM = Supermarket Trade

To form our SM recommendations we have primarily used processor feedback.

For a bull deemed to be suitable for the SM trade he has to have a favourable combination of visual muscle, maturity type and SM index.

MSA = MSA Compliance driven markets

To form our MSA recommendations we have primarily used the June SBTS Tech talk document: "Meat Standards Australia Breeding: for Improved MSA Compliance & Increased MSA Index Values"

A bull recommended for MSA compliance markets must have a favorable combination of the following traits:

- temperament
- fat EBV's
- 200 400 600
- IMF
- carcase weight
- visual muscle

F = Feeder Animal

To form our recommendations we have primarily used feedlot feedback/acceptability of Yalgoo and Yalgoo client's cattle. As well as conducting our own market research.

A bull recommended for use in a system producing feeder steers will have a favorable combination of maturity pattern and the GN index.

EU = EU Market

To form our recommendations we have primarily used feedlot/processor feedback/acceptability of Yalgoo and Yalgoo client's cattle. As well as conducting our own market research.

A bull recommended for use in a system producing animals for the EU market will have a favorable combination of maturity pattern and the EU index.

HGS = Heavy Grass Finished Market

To form our recommendations we have primarily used processor feedback/acceptability of Yalgoo and Yalgoo client's cattle. As well as conducting our own market research.

A bull recommended for use in a system producing animals for the HGS market will have a favorable combination of visual muscle, maturity pattern and the GS index.

BB = Black baldy

To form our BB recommendations we have primarily used client/consultant feedback.

Use the Grain Fed Index to select for bulls suitable for a BB herd.

As well as the GN index; for a bull deemed to be suitable for a BB production system he must have a specific balance of traits. This is not to suggest that other bulls won't fit into a BB herd. However, following consultation with existing BB producers it was determined that this balance will be the most profitable in a system using stocking rate as its primary profit driver and producing a 480-520kg black baldy feeder steer in temperate Australia.

W = Weaner Producer

To form our recommendations we have primarily used market research. A bull recommended for use in a system producing animals for the W market will have a favorable combination of maturity pattern and 200 day growth.

HB = Heifer Bull

To form our heifer bull recommendations we have primarily used the genotypic calving ease traits of CEDIR, BW, GL as well as the phenotype and pedigree of the bull

MP = Multi Purpose Bull

These bulls are suitable for cows and heifers. To form our recommendations the bulls need to have a favourable combination of genotypic calving ease and growth traits

For more information regarding recommendations, ring Jock on 0497 762 977

YALGOO BULL QUALITY ASSURANCE

Bull costs and their impact on profit.

The primary role of a bull is to get live calves at a reasonable cost. The cost of a calf sired is a direct result of the longevity of the bull and the price paid for the bull.

1. **Structural integrity**
2. **Libido**
3. **Pre sale and post sale management**
(incl nutrition & disease management)
4. **Genetic merit of a bull**
5. **Temperament**
6. **Resilience**

BACKGROUND INFORMATION

Bull failure through breakdown or infertility is a major industry issue. Independent studies have suggested it could be around the 30% - 40% per annum across the industry. Problems often arise between the bull supplier and client as to compensation for a bull failure which is quickly compounded by empty cows. At Yalgoo we are determined to offer industry best practise regarding BULL QA.

Even more of a financial threat is purchasing a bull that is never going to get cows pregnant. Bull Quality assurance was revolutionised in the late 1970's and 80's through work done by Dr. Mike Blockey. After testing thousands of commercial bull's of all ages he showed that 25% of bull's tested were unfit for service. He then developed a protocol to ensure these bull's would be identified before they were sold. This was known as the Serving Ability Test (SAT). Industry uptake was good through the 90's, however it seems there is an industry trend away from bull testing again. Disturbingly this means that around 1 in 4 bulls will again be entering the Australian beef herd unfit for service.

New Zealand research by Greg Tattersfield suggested 28% of commercial working bull's are unfit for service. And the Holmes and Sackett research suggested 18% of young bull's are unfit for service. If you are purchasing untested bulls, how would you know? Serving Ability Testing, although laborious is the definitive test we have to ensure bull's are going to be able to fulfil their primary role.

The other advantage of Serving Ability Testing is to give the bull sexual experience. With sexual experience under his belt, he is more likely to get more cows pregnant in the first cycle. This increases the pressure put on herd fertility as well as having management benefits. Most importantly it means more weight in progeny at sale time which means more income.

At Yalgoo we offer a pre-sale protocol that is industry best standard.

Our program is as follows:

- **ALL YALGOO SALE BULL'S HAVE BEEN SEMEN TESTED**
- **INDEPENDENT STRUCTURAL ASSESSMENT.** Bulls and females are independently assessed for structural soundness and temperament, by Dr. Phil Holmes and/or Jim Green
- **NO HOOF TRIMMING.** There has been no hoof trimming on Yalgoo for 20+ years
- **VET CHECKED.** All bulls are vet checked by Ian Crawford. Yalgoo sale criteria states that all bulls must measure 32cm or larger for testicle circumference at 400 days. Hocks, feet, penis and jaw structure are also examined. All bulls are scored for testicle tone and any bulls with abnormalities are culled
- **TESTICLE TONE SCORED.** To semen test or not to semen test? Research has shown that if testicles are firm, springy and of adequate size then the bull has a 98% chance of delivering good quality semen. Because semen quality rises and falls ad infinitum, semen testing is not the ideal method to get an overall picture of the bull's potential to deliver quality semen year round. For more information please contact us
- **SERVING ABILITY.** All Yalgoo bulls must pass a service ability test to ensure they can serve a cow before leaving Yalgoo
- **PFIZER BLUE STAR.** All sale bull's are tested to ensure no Persistently Infected animals with Pestivirus are sold. All bull's are vaccinated according to Blue Star protocol
- **FEEDBACK:** To further improve our bull QA we need your help! With the bull you have purchased you will receive an audit of performance. We encourage you to fill out this when/ if a problem arises with your bull, and get it back to us. We will use this information to improve our bull QA to ensure our bulls last longer. Everyone in the bull supply chain will benefit from these records.
- **WARRANTY:** Bulls are depreciated over their working lifetime. This results in a stable calf cost for the purchaser. Please speak to Jock regarding the functionality of this warranty.
- **CLIENT GUIDANCE FOR BULL QA:** Please speak to us if you require any assistance in developing your own protocol to ensure your bull's are fit for service each year pre-joining. As your bull ages the likelihood for him being unfit for service increases. i.e. A 6 year old bull is 4 times more likely to be unsound for breeding than a three year old bull.

AGE OF PUBERTY TRIAL/ EBV

Yalgoo has partnered with nine other seedstock herds, Herefords Australia, Angus Australia and with scientists at AGBU, in an MLA funded research project examining the genetics of age at puberty in temperate beef breed heifers.

Age at puberty was assessed in 3,000 Angus and 1,000 Hereford heifers by regular ultrasound scanning, from weaning to synchronisation for AI, to detect first oestrus. This method was developed and proven for tropical beef breeds as part of Beef CRC research and has become the basis for more accurate description of female reproduction in the Brahman, Santa Gertrudis and Droughtmaster BREEDPLAN evaluations.

Results for Angus and Hereford heifers showed that:

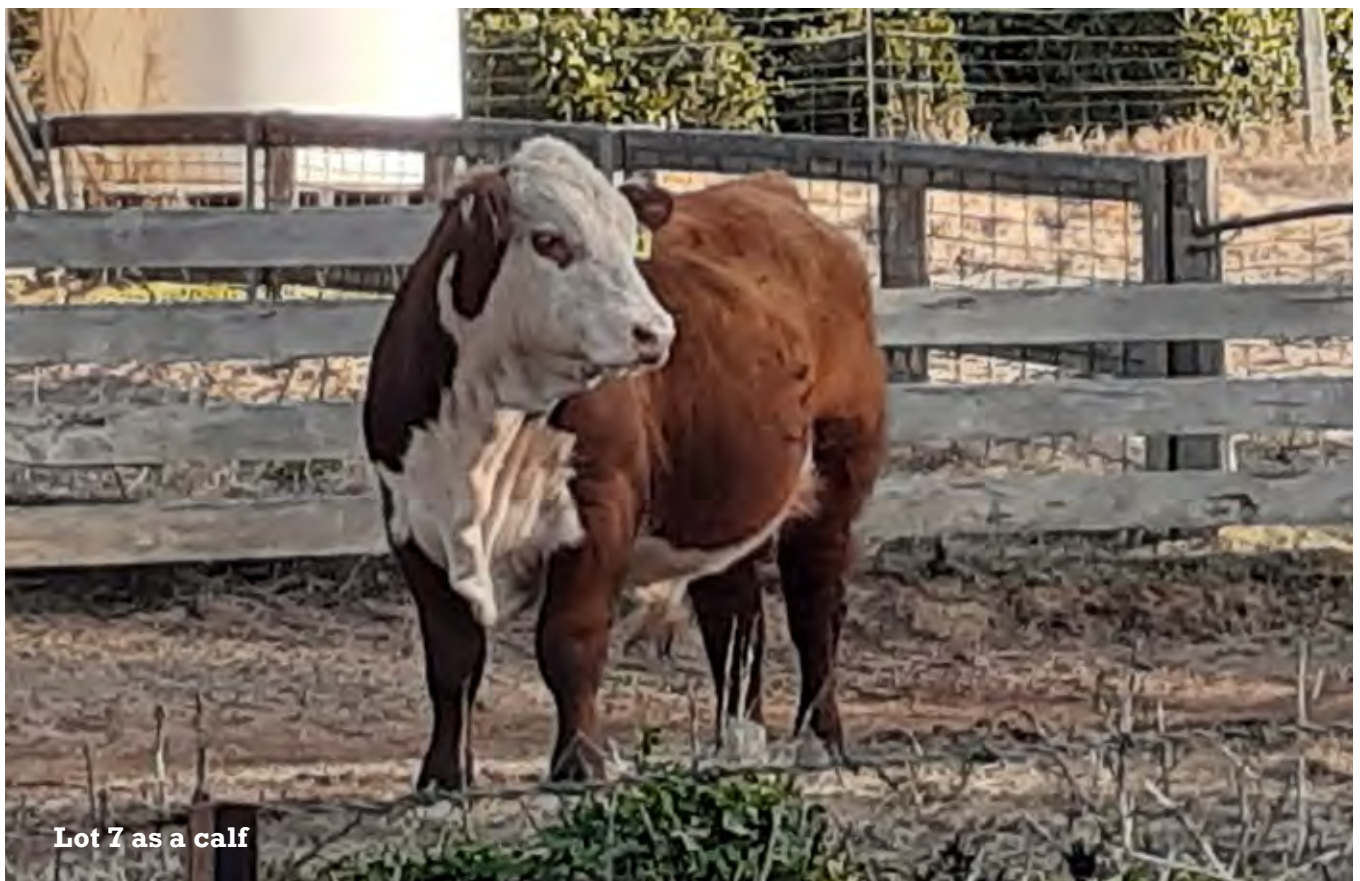
- there is significant genetic variation for age at puberty,
- that the trait is heritable, and
- Therefore could be improved by selection.

Just as importantly for temperate breeds, where reproduction rates are generally considered acceptable, it could provide a means of monitoring the genetics of female reproduction as selection pressure is applied to improve other aspects of productivity (carcass quality, growth and calving traits for example).

Trial EBVs for age at puberty have been distributed to the participating breeders. The range in those EBVs is 74 and 141 days respectively, for the sires of Hereford and Angus heifers evaluated for the project. This means that the female progeny of the lowest (most desirable) age at puberty Hereford and Angus bulls would, on average, become pubertal 37 and 70 days earlier than the heifer calves of the sires with the highest age at puberty trial EBVs.

The results of this study underpin new research (the Southern Multi-Breed Project) which will involve Angus, Hereford, Wagyu, Shorthorn, Charolais and Brahman animals. This is a large MLA funded initiative, one of the focuses of which will be to improve the BREEDPLAN genetic evaluation of female reproduction traits for temperate beef breeds. This new research will be linked to the Repronomics® project in Northern Australia, which is driving the accuracy of genetic (and genomic) evaluation of female reproduction and other economically important traits for northern beef breeders.

The Trial Age at Puberty EBVs are a valuable step in helping breeders to select cattle that balance reproduction, growth and carcase merit, and other traits which contribute to overall profitability.

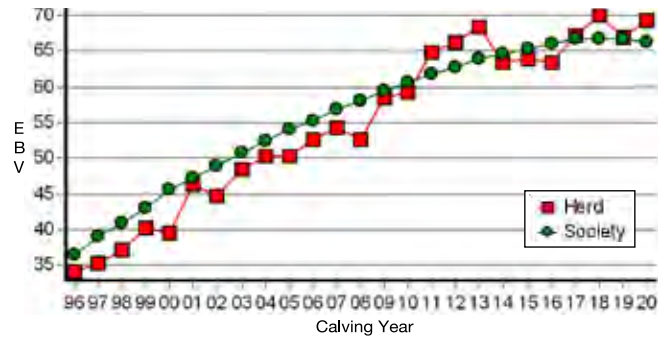


TEMPERAMENT

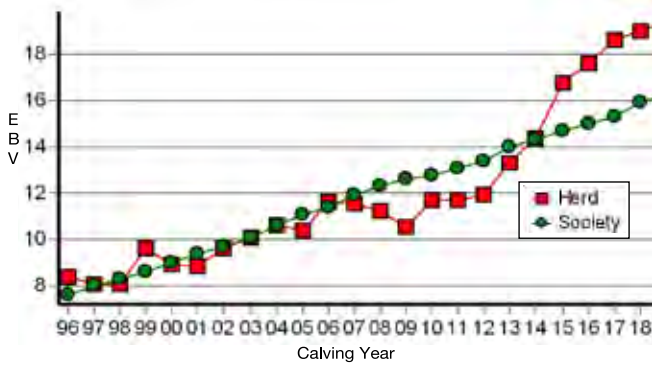
In a recent survey in the US, this was ranked as the most important genetic trait by US beef producers. Yalgoo has long had a reputation for breeding quiet cattle.

Yalgoo is one of the very few whiteface studs that measure temperament. This is done by an independent assessor. The importance of this is paramount. Your cattle will generally react differently around a new face. Your bull provider's cattle are used to him/her, however they won't be there on your farm to deal with the bull on a day to day basis. By getting an independent assessor to do this we are much more likely to pick up any aggressive stock before they leave the farm.

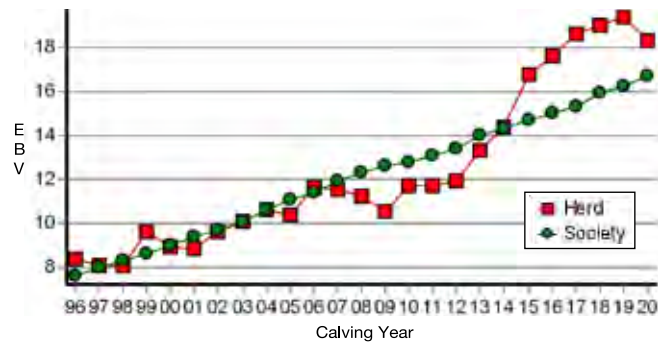
MATURE WEIGHT (kg)



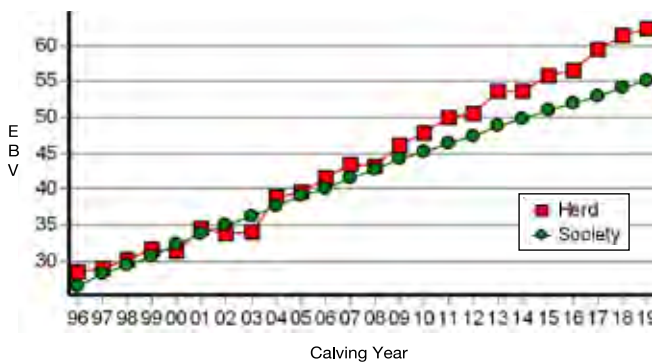
200 DAY GROWTH (kg)



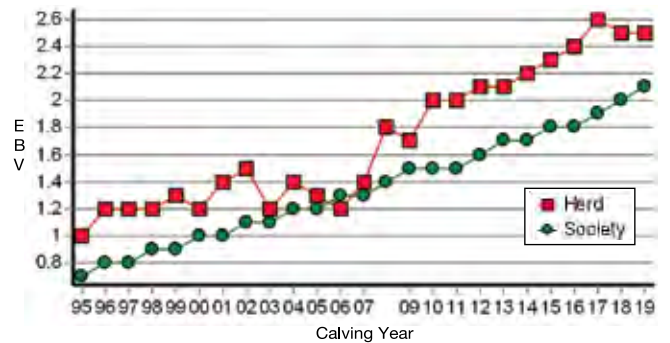
200 DAY MILK (kg)



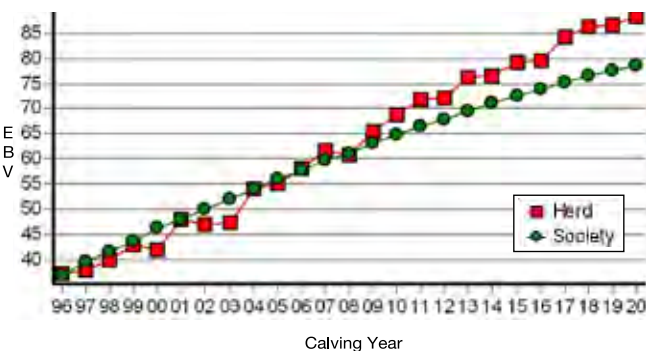
400 DAY WEIGHT (kg)



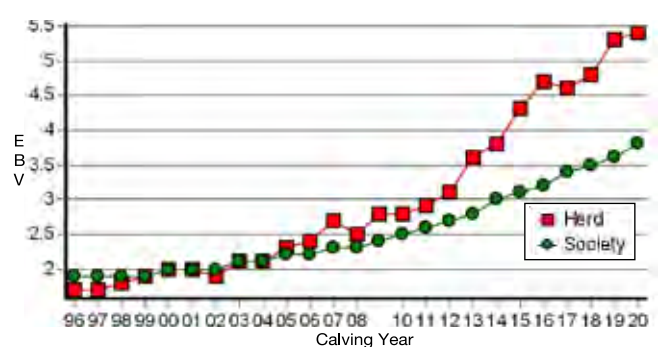
SCROTAL SIZE (cm)



600 DAY WEIGHT (kg)



CARCASE EMA (sq.cm)



PHENOTYPIC TRAITS

The phenotypic traits that Yalgoo select for are:

- Superior visual muscling
- Structural correctness
- Correct udder type
- Eye pigment and placement

MATURITY TYPE

Maturity type is controlled both by genetic and environmental factors. We aim to produce frame 7 bulls with positive fat cover and a medium/early maturity pattern.

We find under high stocking rates, earlier maturing cattle are more versatile and marketable.

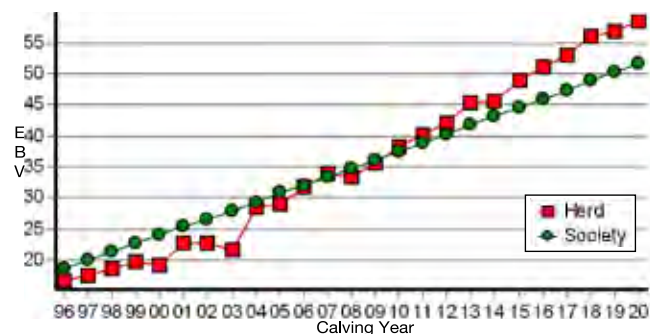
DATA INTEGRITY

Yalgoo has a Breedplan completeness of recording rating of four and a half stars.

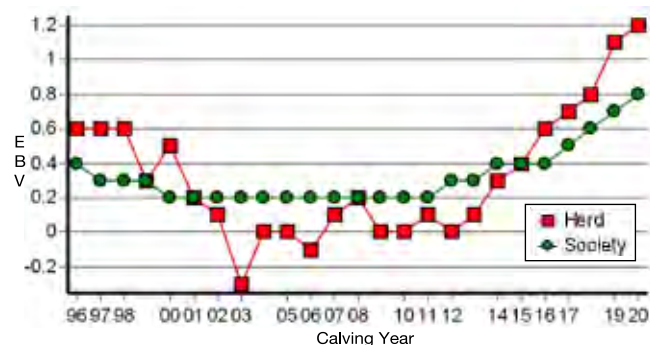
Our herd enjoys a high degree of performance predictability as a result of accurate BREEDPLAN EBV's. This is due to extensive testing in the following traits:

- ALL stud calves are weighed at Birth, increasing the accuracy of their birth weight EBV
- ALL stud bulls and heifers are weighed for 200, 400 and 600 day weight. Steers are weighed and recorded until they are sold. By weighing all animals we are increasing the information nucleus on each dam and creating greater herd linkage which increases BREEDPLAN accuracies
- ALL stud heifers and bulls (since 1972) have been scanned for EMA, fat depth and IMF (since 2000). Therefore our sale bulls have more accurate carcass EBV's and we are maximising the carcass information from our herd, allowing us to achieve more rapid genetic progress in carcass traits
- Mature cow weight is measured
- Independent phenotypic traits are measured including : Structure, Muscle scores & temperament
- Yalgoo was a co operator herd in the across breed NFI trial work to develop an EBV for Net Feed Intake. AGBU is currently making modifications to the NFI analysis
- By sourcing Yalgoo genetics you can be assured that any current/future economically important EBV will be measured with the greatest care and submitted correctly

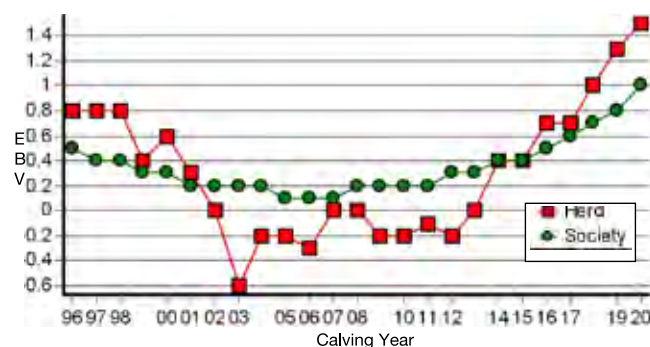
CARCASS WEIGHT (kg)



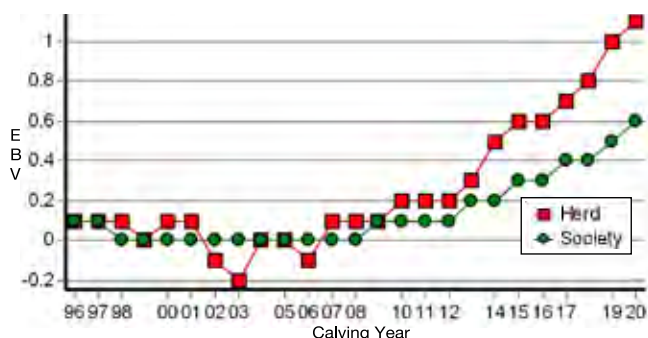
CARCASS RIB FAT (mm)



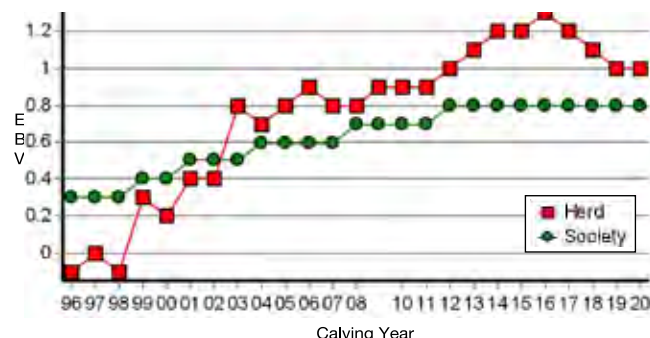
CARCASS RUMP FAT (mm)

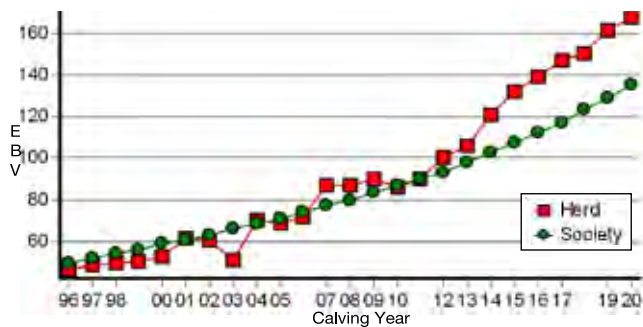
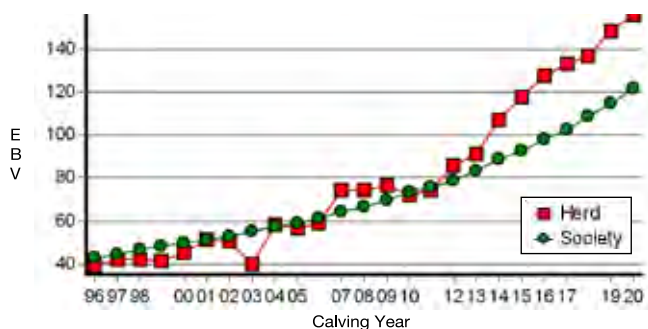
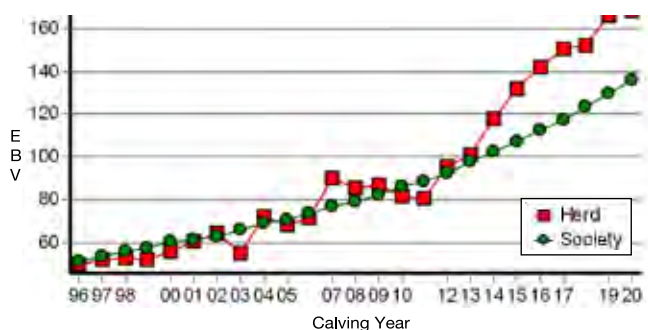
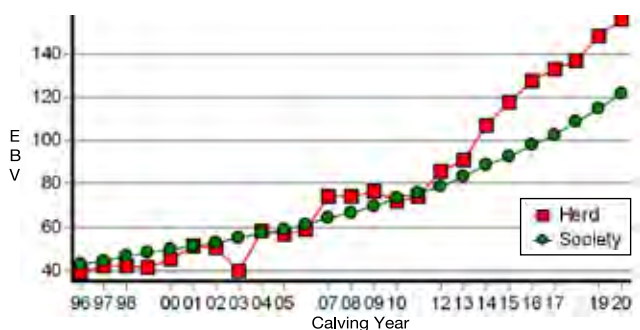


CARCASS IMF (%)



CARCASS RBY (%)



SOUTHERN SELF-REPLACING (\$)**NORTHERN SELF-REPLACING (\$)****SOUTHERN BALDY MATERNAL (\$)****NORTHERN BALDY MATERNAL (\$)****MANAGING YOUR YALGOO BULL**

Appropriate nutrition and paddock size must be provided when the bull is to be used in a single sire mating situation. All bulls should be examined frequently during the joining period so that signs of injury or disease can be detected and treated immediately.

Structural problems in cattle have a substantial effect on both the reproductive and growth performance of a beef herd. It is widely recognised that structural problems in sires have detrimental effects on conception rates, calving patterns and thus profitability. Similarly, females with inadequate structural characteristics are more prone to weaning lighter calves or conceiving later in the breeding season than their more functional counterparts. These structural problems are filtered through the supply chain resulting in reduced income for the producer, feedlot and thus reducing the overall productivity of the Australian Beef Industry.



**Yalgoo mixed age cows
conceived at 95% in
2019 during the worst
drought on record**

YALGOO QUALITY ASSURANCE

DATA INTEGRITY

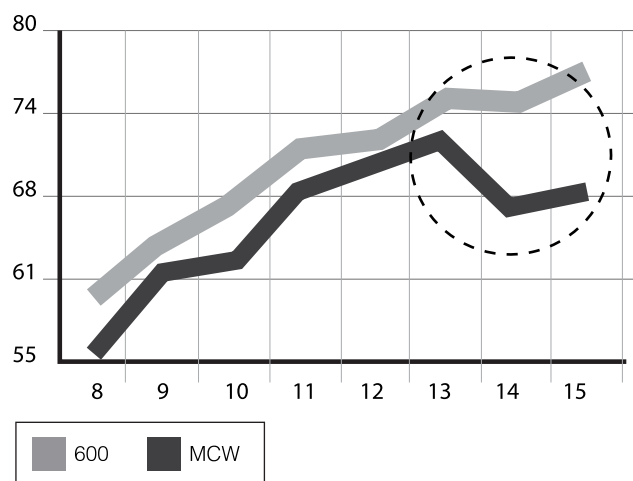
Yalgoo has a Breedplan completeness of recording rating of four and a half stars.

Our herd enjoys a high degree of performance predictability as a result of accurate BREEDPLAN EBV's. This is due to extensive testing in the following traits:

- ALL stud calves are weighed at Birth, increasing the accuracy of their birth weight EBV
- ALL stud bulls and heifers are weighed for 200, 400 and 600 day weight. Steers are weighed and recorded until they are sold. By weighing all animals we are increasing the information nucleus on each dam and creating greater herd linkage which increases BREEDPLAN accuracies
- ALL stud heifers and bulls (since 1972) have been scanned for EMA, fat depth and IMF (since 2000). Therefore our sale bulls have more accurate carcase EBV's and we are maximising the carcase information from our herd, allowing us to achieve more rapid genetic progress in carcase traits
- Mature cow weight is measured
- Independent phenotypic traits are measured including : Structure, Muscle scores & temperament
- Yalgoo was a co operator herd in the across breed NFI trial work to develop an EBV for Net Feed Intake. AGBU is currently making modifications to the NFI analysis
- By sourcing Yalgoo genetics you can be assured that any current/future economically important EBV will be measured with the greatest care and submitted correctly

MANAGING YOUR YALGOO BULL

Appropriate nutrition and paddock size must be provided when the bull is to be used in a single sire mating situation. All bulls should be examined frequently during the joining period so that signs of injury or disease can be detected and treated immediately.



Dam of lot 18



NJW Trust: Keystone Sire at Yalgoo

MATURE COW WEIGHT

I have made special mention of this graph to highlight the importance of how mature cow weight effects stocking rate.

From 2009 to 2013 (circled area), MCW and 600 were increasing at the same rate. This is what you would expect when no selection pressure is being applied, as these traits are highly correlated.

From 2013 to 2015 we can see a distinctive gap open between these two traits. This gap reflects the selection pressure that has occurred on mature cow weight. The growth curve is being bent at 600 days and this has a pronounced affect on stocking rate. Importantly 600 day wt has not been compromised to achieve this result. This means there is no compromise in terms of income received on young sale stock as long as these stock are marketed before 600 days. However there is the ability to increase stocking rate as the MCW EBV has fallen by 8kgs.



Maternal brother to lot 5 - in use at Koanui

BEEF CLASS STRUCTURAL ASSESSMENT

Structural problems in cattle have a substantial effect on both the reproductive and growth performance of a beef herd. It is widely recognised that structural problems in sires have detrimental effects on conception rates, calving patterns and thus profitability. Similarly, females with inadequate structural characteristics are more prone to weaning lighter calves or conceiving later in the breeding season than their more functional counterparts. These structural problems are filtered through the supply chain resulting in reduced income for the producer, feedlot and thus reducing the overall productivity of the Australian Beef Industry.

Over the past decade, use of the Beef Class Structural Assessment System in the seedstock industry has produced a marked improvement in herds which have shown commitment to using the information appropriately. Through these dedicated breeders, there has been a flow on affect of structural improvement through out all sectors of the beef cattle industry.

YALGOO STRUCTURAL PROGRAM:

The 2021 Yalgoo Sale Bulls have been independently structurally assessed to maximise the quality of stock on offer. Any animals deemed inadequate have been removed from the sale draft. The Yalgoo sale bulls were assessed by Dr. Phil Holmes on the 6/5/21.

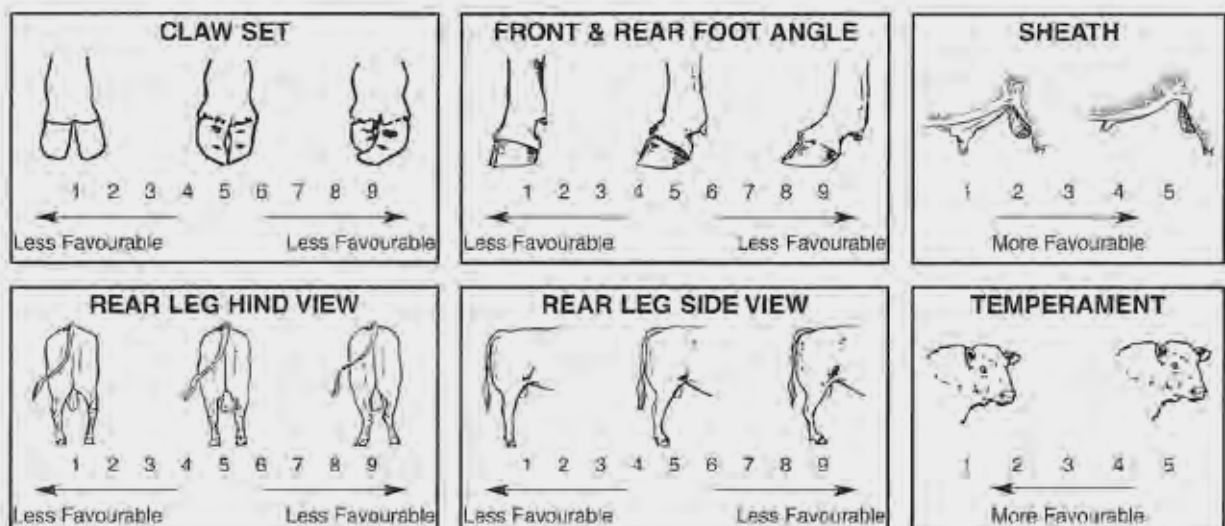
HOW TO USE THE BEEF CLASS STRUCTURAL ASSESSMENT SYSTEM

The Beef Class Structural Assessment System uses a 1-9 scoring system;

- A score of 5 is ideal.
- A score of 4 or 6 shows slight variation from ideal, but this includes most animals. An animal scoring 4 or 6 would be acceptable in any breeding program.
- A score of 3 or 7 shows greater variation but would be acceptable in most commercial programs. However, seedstock producers should be vigilant and understand that this score indicates greater variation from ideal.
- A score of 2 or 8 are low scoring animals and should be looked closely before purchasing.
- A score of 1 or 9 should not be catalogued and are considered culls.

Sheath, Eye and Temperament (1 - 5)

- A higher score indicates a tighter sheath and is more favourable
- A lower score indicates a quieter animal and is more favourable
- A higher score indicates a more favourable eye settin



TECHNICAL

Only **GROUP BREEDPLAN EBV's with Accuracies (Acc)** can be validly compared between herds.

Estimated Breeding Values (EBVs) for the growth traits are calculated in kilograms. The EBV is the best estimate of an animal's genetic merit for that traits.

Accuracies are presented with every EBV and give an indication of the amount of information that has been used in the calculation of that EBV. The higher the accuracy the lower the likelihood of change in the animal's EBVs more information is analysed for that animal or its relatives.

Birth Weight - The lower the birth weight EBV, the lighter is the birth weight potential of the progeny.

200 Day Weight - Indicates the relative weight advantage of a sire 8-10 months of age.

400 Day Weight - Indicates the relative weight advantage of a sire at yearling age.

600 Day Weight - Indicates the relative weight advantage of a sire beyond yearling age. This EBV is important if selecting sires to breed steers for grain fed export markets.

Genetic Milk - Reflects the extra calf weight at weaning due to the genetic influence a sire has on his daughters milking and mothering ability.

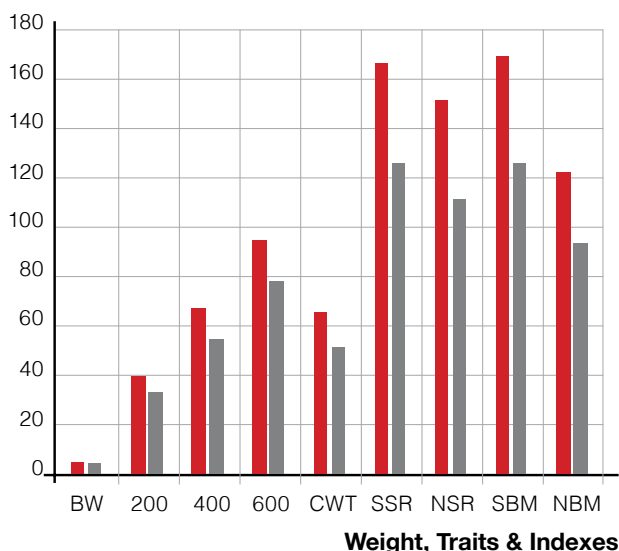
Gestation Length - Lower (-) EBV's indicate easier calving and increased growth after birth.

EMA - Bulls with positive EBVs for this trait are expected to produce more muscular progeny than bulls with negative EBVs.

Fat Depth - Bulls with negative EBVs for this trait are expected to produce leaner progeny than bulls with positive EBVs.

Intra-Muscular Fat Percentage - Estimates the genetic difference in the percentage of intra-muscular fat at the 12th/13th rib site in a 300kg dressed carcass. Positive values are generally more favourable.

Retail Beef Yield Percentage - Represents total (boned out) meat yield as a percentage of a 300kg dressed carcass. A more positive EBV indicates higher percentage carcass yield.



Scrotal Size - This EBV is an indicator of male fertility in regards to semen quality and quantity. Higher EBVs indicate higher fertility potential of male progeny and is positively correlated to age of puberty in female progeny.

Days to Calving (DC) - Measures the time interval from the first exposure to a bull in paddock mating to when a cow calves. A negative EBV indicates a shorter interval and therefore higher fertility.

Mature Cow Weight - Is an estimate of the difference in cow weight at calf weaning time and is an indicator of mature cow weight and potential feed requirements.

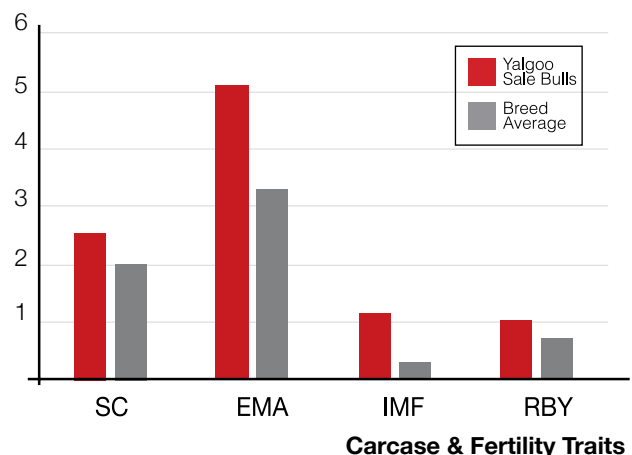
Carcass Weight - Estimates the difference in carcass weight at a standard 650 days of age.

Supermarket Index - Estimates the genetic differences between animals in net profitability per cow joined for an example commercial herd targeting the domestic supermarket trade. Steers are either finished on grass or grain (e.g. 50-70 DAYS). Steers are assumed marketed at 450kgs live weight (250kg HSCW and 12mm P8 fat depth) at 17 months of age. Daughters are retained for breeding. In response to industry feedback regarding eating quality and tenderness, a small premium has been placed on marbling.

Grass Fed Steer Index - Estimates the genetic differences between animals in net profitability per cow joined for an example commercial herd targeting grass finished steers. Steers are assumed marketed at 600kg live weight (330 HSCW and 8mm P8 fat depth) at 23 months of age. Daughters are retained for breeding. In response to industry feedback regarding eating quality and tenderness, a small premium has been placed on marbling.

Grain Fed Steer Index - Estimates the genetic differences between animals in net profitability per cow joined for an example commercial herd targeting pasture grown steers with a 125 day feedlot finishing period for the grain fed markets. Steers are assumed marketed at 600kg live weight (330 HSCW and 20mm P8 fat depth) at 20 months of age. Daughters are retained for breeding. There is a significant premium if steers reach a marbling score of 2 or greater.

EU Index - Estimates the genetic differences between animals in net profitability per cow joined for an example commercial herd targeting pasture finished steers for the EU markets. Steers are assumed marketed at 620kg live weight (330 HSCW and 14mm P8 fat depth) at 24 months of age. Daughters are retained for breeding. There is no marbling requirement.



STRUCTURAL SCORES

Lot No.		FC	RC	FA	RA	RS	RH	Sheath	Temp.	Test. Tone	Eye	MSC
1	SODQ006	5	5	5	5	6	6	4	1	1	4	C+
2	SODQ107	5	5	5	5	5	5	3	2	1	3	C+
3	SODQ014	5	5	5	6	5	5	4	1	1	3	C+
4	SODQ099	6	5	5	5	5	5	3	1	1	4	C
5	SODQ047	6	5	6	6	4	5	4	1	1	3	C+
6	SODQ250	5	5	5	6	6	5	3	1	1	5	C
7	SODQ063	6	5	4	6	5	6	2	1	1	4	C+
8	SODQ132	6	5	5	6	5	5	4	1	1	3	B-
9	SODQ198	5	5	4	4	5	6	3	1	1	4	C+
10	SODQ081	6	5	5	5	5	6	4	1	1	4	B-
11	SODQ093	7	5	4	6	5	4	2	1	1	2	C+
12	SODQ004	6	5	5	5	5	6	3	1	1	2	C
13	SODQ236	6	5	6	6	4	5	3	1	1	3	C
14	SODQ210	5	5	5	6	6	5	2	1	1	3	C+
15	SODQ194	6	5	6	5	5	5	3	1	1	3	C+
16	SODQ110	4	5	6	6	5	5	4	1	1	3	C+
17	SODQ109	4	4	5	5	5	6	3	1	1	4	C+
18	SODQ038	3	4	6	7	6	7	4	1	1	4	C
19	SODQ118	6	5	5	5	6	7	3	1	1	3	C
20	SODQ133	6	6	5	6	4	6	3	1	1	4	C+
21	SODQ181	6	5	6	6	5	6	4	1	1	3	C+
22	SODQ247	5	5	4	5	6	6	2	1	1	3	C+
23	SODQ075	4	4	5	5	4	5	3	1	1	3	C+
24	SODQ159	6	6	4	5	5	6	3	1	1	4	C+
25	SODQ141	7	5	4	5	5	6	4	1	1	4	C-
26	SODQ020	4	4	5	5	5	5	4	1	2	4	C+
27	SODQ113	4	5	5	6	6	5	4	1	1	4	C
28	SODQ248	5	5	6	5	5	6	4	1	1	3	C
29	SODQ041	4	5	6	5	6	6	4	1	1	4	C
30	SODQ040	5	5	5	5	5	6	5	1	1	4	C
31	SODQ060	6	5	5	6	6	5	4	1	1	4	C
32	SODQ136	5	6	5	6	6	6	4	1	1	3	C
33	SODQ079	6	6	6	6	5	6	3	1	1	3	C
34	SODQ164	6	6	5	5	5	5	4	1	1	4	C+
35	SODQ148	4	5	5	5	6	6	2	1	1	3	B-
36	SODQ238	4	4	4	6	6	6	3	1	1	4	C
37	SODQ106	6	5	5	5	5	5	4	1	1	3	C+
38	SODQ115	5	5	6	6	5	6	2	1	2	3	C+
39	SODQ025	5	5	6	6	6	5	3	1	1	3	C
40	SODP170	5	5	3	3	4	5	4	1	1	5	C+
41	SODP105	5	5	5	5	5	5	4	1	1	3	B-
42	SODP279	5	5	5	5	5	5	4	1	1	4	B-
43	SODP243	5	5	5	5	5	5	4	1	1	3	B-
44	SODP093	5	5	5	6	5	5	4	1	1	5	B-
45	SODP233	5	5	5	5	5	5	4	1	1	5	C+

NEW SIRES 2020 & 2021

Our search for next generation sire's led us to the following bulls from OZ, NZ and the US. All have superior performance, proven pedigrees, strong phenotypes and breed leading dams.



\$20 000 Tobruk Lennox

• First sons sell • Widely used, sound, thick moderate Spark son • High EMA IMF and excellent DC



Wirruna Nixon

• Moderate Powerhouse • Top 5% Growth Traits EMA IMF and all indexes



**NJW 79Z Z311 Endure 173D \$150 000 High Seller for NJW
– Large semen share purchased**



**EF Validated – Spread bull with proven performance in Olsen Ranch progeny
test. The highest IMF breeding value we could find.**



NJW 135U 10Y 27A Hometown
Proven structural integrity, calving ease, carcass and phenotype bull



Koanui Techno – Sons sell
Great carcass quality, structure, performance

Lot 1 YALGOO QUOTA Q006 (AI) (PP)

Ident: SODQ006

Born: 27/08/2019

Eye Pigment: 100/100

ALLENDALE YACKA (AI) (P)
 ALLENDALE ANZAC E114 (PP)
 ALLENDALE DAWN B22 (AI) (ET) (P)
 Sire: **WIRRUNA MATTY M288 (AI) (ET) (PP)**
 ELITE 4110 E212 (AI) (PP)
 WIRRUNA CIRCLE H13 (AI) (PP)
 WIRRUNA CIRCLE F31 (AI) (PP)

CHURCHILL RED BULL 200Z (P)
 CHURCHILL KICKSTART 501C (IMP USA) (AI) (ET) (P)
 HVH OKSANA 4L 33N (P)
 Dam: **YALGOO TIGRESS N030 (AI) (P)**
 KARINA VALDRES (AI) (S)
 YALGOO TIGRESS Z241 (H#)
 YALGOO TIGRESS V110 (AI) (P)

\$ Index Values

Southern Self Replacing: +\$230
 Northern Self Replacing: +\$211
 Southern Baldy Maternal: +\$255
 Northern Baldy Terminal: +\$194

Purchaser:

Price \$:

June 2021 Hereford BREEDPLAN

CE (DIR)	CE (DTRS)	GL	BW	200	400	600	MCW	Milk	SS	DC	Cwt	EMA	Rib	RUMP	RBY%	IMF%
+10.3	+6.6	-7.1	+5.4	+50	+92	+127	+115	+16	+3.2	-2.1	+83	+4.5	-0.1	-0.8	+1.4	+1.6
51%	40%	75%	73%	69%	69%	70%	63%	55%	74%	41%	63%	55%	59%	62%	53%	61%

Traits Observed: GL,CE,BWT,200WT(x2),400WT,600WT,SS,FAT,EMA,IMF,Genomics

Parent Verification: Sire: Verified, Dam: Not Verified

Notes: Selling one half share walking rights. Q006 is our keeper bull by Matty. Phenotypically, Q6 is long, slick skinned with good muscling and outstanding feet. He has an excellent eye setting, incredible sheath and angles. This is supported by his independent structural scores. Genetically, Q6 was born 12 days early at 29kgs, the first calf from a powerful Kickstart daughter. Dam N030 was an own daughter of our well respected donor cow Z241 who grossed over \$100 000 for her sons in the 2017 sale alone. He was used over stud cows as a yearling, separated and run on maintenance type feed with a purchased sire. After having a much lighter preparation, Q6 was still one of the heaviest bulls with the highest EMA and equal second highest IMF at scanning. Quota has a unique balance of EBVs being top 25% of the breed or better for 15 traits and indexes. He is the only bull in the breed with this co

Lot 2 YALGOO PRECISION Q107 (AI) (PP)

Ident: SODQ107

Born: 24/09/2019

Eye Pigment: 085/100

KOANUI UNANIMOUS 7174 (P)
 KOANUI UNANIMOUS 0408 (P)
 KOANUI GIRLIE 3048 (P)
 Sire: **KOANUI TECHNO 3062 (IMP NZL) (PP)**
 LEELANDS X-TENSION 293 (P)
 KOANUI BLUSH 6455 (P)
 KOANUI BLUSH 3304 (P)

KCF BENNETT 3008 M326 (P)
 NJW 73S M326 TRUST 100W ET (IMP USA) (ET) (P)
 NJW P606 72N DAYDREAM 73S (P)
 Dam: **YALGOO K400 (AI) (P)**
 BOWEN UNIQUE U161 (AI) (P)
 YALGOO LIQUER Z147 (P)
 YALGOO LIQUER P44 (P)

\$ Index Values

Southern Self Replacing: +\$176
 Northern Self Replacing: +\$163
 Southern Baldy Maternal: +\$187
 Northern Baldy Terminal: +\$138

Purchaser:

Price \$:

June 2021 Hereford BREEDPLAN

CE (DIR)	CE (DTRS)	GL	BW	200	400	600	MCW	Milk	SS	DC	Cwt	EMA	Rib	RUMP	RBY%	IMF%
+3.7	+4.8	+1.7	+4.3	+37	+70	+94	+73	+25	+1.9	-2.1	+69	+7.0	+1.8	+2.4	+0.9	+1.7
54%	47%	76%	74%	70%	70%	72%	67%	64%	77%	48%	65%	57%	62%	65%	57%	63%

Traits Observed: GL,CE,BWT,200WT(x2),400WT,600WT,SS,FAT,EMA,IMF,Genomics

Parent Verification: Sire: Verified, Dam: Not Verified

Notes: Our best Techno son to date. Trust and Techno are probably the two most proven, performance and growth sires in the breed. Precision has Techno soundness, softness and fat cover with Trust muscle in an ideal maturity pattern. All of this with very balanced EBVs and a moderate dam with a tidy udder. Correct, homozygous poll, meat machine. Used as a yearling over stud cows. Ideal for producing high profit, commercially relevant bulls. Top 15% 400, 600 NSR NBT indexes, Top 10% Milk, IMF, SSR SBM indexes, Top 5% EMA CWT. Market/ System suitability: SM, MSA, F, EU, HGS, BB

Lot 3 YALGOO QUIRK Q014 (AI) (PP)

Ident: SODQ014

Born: 02/09/2019

Eye Pigment: 100/100

ALLENDALE YACKA (AI) (P)
 ALLENDALE ANZAC E114 (PP)
 ALLENDALE DAWN B22 (AI) (ET) (P)
 Sire: **WIRRUNA MATTY M288 (AI) (ET) (PP)**
 ELITE 4110 E212 (AI) (PP)
 WIRRUNA CIRCLE H13 (AI) (PP)
 WIRRUNA CIRCLE F31 (AI) (PP)

SOUTH BUKALONG WALLACE 2 (P)
 GLENTREVOR WALLACE H427 (AI) (PP)
 GLENTREVOR MARITANA F240 (P)
 Dam: **YALGOO MELODY N033 (AI) (P)**
 YALGOO ZED F190 (P)
 YALGOO MELODY L080 (P)
 YALGOO MELODY G132 (P)

\$ Index Values

Southern Self Replacing: +\$192
 Northern Self Replacing: +\$181
 Southern Baldy Maternal: +\$197
 Northern Baldy Terminal: +\$142

Purchaser:

Price \$:

June 2021 Hereford BREEDPLAN

CE (DIR)	CE (DTRS)	GL	BW	200	400	600	MCW	Milk	SS	DC	Cwt	EMA	Rib	RUMP	RBY%	IMF%
+5.0	+3.5	-5.6	+4.1	+44	+72	+94	+63	+16	+2.1	-2.9	+66	+3.4	+2.4	+3.6	-0.8	+2.5
51%	40%	75%	73%	68%	68%	69%	63%	54%	73%	40%	62%	54%	59%	62%	53%	61%

Traits Observed: GL,CE,BWT,200WT(x2),400WT,600WT,SS,FAT,EMA,IMF,Genomics

Parent Verification: Sire: Verified, Dam: Not Verified

Notes: Bigger frame, homozygous poll, soft Matty son with extra volume. This classy, high profit bull has extra good feet and is the first calf out of a Wallace female with some grunt. He'll take your eye with his extra quality, balanced EBV profile and top 1% IMF. Used as a yearling over stud cows. Stud sire. Top 15% 600, Top 5% GL, 200 400 RIB RUMP IMF all indexes. Market/ system suitability: MSA, F EU, HGS, BB, W, MP

Yalgoo/Ivy Bank Sale Bulls 2021

EBV Summary May Run 2021

LOT	INDENT	SIRE	H/P GENO	DOB	CEDIR	CE DRT	GL	BW	200	400	600	MCW
1	SODQ006	MATTY	PP	27/08/2019	10.8	6.9	-7.3	4.7	47	88	121	105
2	SODQ107	TECHNO	PP	24/09/2019	3.5	4.7	1.6	4.4	37	71	95	76
3	SODQ014	MATTY	PP	2/09/2019	5.7	3.8	-5.7	4	43	72	94	60
4	SODQ099	NAPIER	PP	24/09/2019	8.2	4.7	-3	4.3	41	67	97	75
5	SODQ047	LANCE	PP	16/09/2019	2.8	4.6	-1.8	5.1	41	68	103	84
6	SODQ250	MATTY	HPC	13/09/2019	11.1	7.2	-7.3	2.6	39	71	100	88
7	SODQ063	LANCE	HPC	19/09/2019	1.9	5	-2.7	4.7	41	72	100	73
8	SODQ132	ENDURE	PP	28/09/2019	-1.1	2.3	4	3.9	35	57	91	53
9	SODQ198	LENNY	HPF	14/10/2019	-0.4	3.5	2	5.7	39	66	91	82
10	SODQ081	SMOKE	PP	21/09/2019	-1	0.1	-1.9	6.9	48	82	115	109
11	SODQ093	ENDURE	HPC	23/09/2019	-0.7	2.5	2.9	5	43	75	106	77
12	SODQ004	MATTY	PP	26/08/2019	9.3	3	-8.1	0.6	37	61	78	56
13	SODQ236	LENNY	PP	28/10/2019	0.6	5.1	1.1	6.8	41	70	98	91
14	SODQ210	MAFI	HPC	18/10/2019	-0.3	-0.4	-0.1	5.2	41	66	91	78
15	SODQ194	LENNY	PP	11/10/2019	-3.1	-0.4	1	4.6	35	53	76	41
16	SODQ110	ENDURE	PP	25/09/2019	3.6	4.8	2.2	3.9	37	68	99	85
17	SODQ109	LANCE	HPC	25/09/2019	3	4.9	0.2	5.3	38	68	103	85
18	SODQ038	MATTY	HPC	14/09/2019	8.9	7	-5.1	3.6	37	67	91	80
19	SODQ118	JACKO	PP	27/09/2019	3.6	3.8	0.7	3.5	35	57	80	54
20	SODQ133	MYSTIC	PP	28/09/2019	2.6	-1	2.6	5	39	70	96	77
21	SODQ181	MOGUL	PP	8/10/2019	0.2	-3.7	-0.1	7.2	42	73	99	83
22	SODQ247	LENNY	PP	19/11/2019	-7.2	-0.4	3.4	7.7	46	75	107	103
23	SODQ075	LANCE	PP	21/09/2019	-0.5	1.8	0	7.1	45	79	123	106
24	SODQ159	NICK	PP	3/10/2019	-2.1	2.8	1.2	7.2	48	72	109	88
25	SODQ141	MYSTIC	PP	30/09/2019	-0.1	1.8	0.8	5.8	45	70	100	80
26	SODQ020	27A	HPC	4/09/2019	1	1.9	-0.4	5.3	36	60	92	83
27	SODQ113	NICK	HPC	26/09/2019	0.3	1.1	0.2	4.2	34	56	79	67
28	SODQ248	LANCE	HPC	22/09/2019	3.9	5	-2.1	2.9	34	49	65	50
29	SODQ041	MATTY	PP	14/09/2019	2.5	-0.3	-3	4.7	31	50	72	49
30	SODQ040	MATTY	HPC	14/09/2019	0.2	-0.9	-4.7	5.2	37	58	82	64
31	SODQ060	NEVADA	PP	18/09/2019	7.8	5.3	-1.7	4.5	33	59	81	70
32	SODQ136	MOGUL	HPC	29/09/2019	7	3.9	-2.6	2.3	32	54	68	52
33	SODQ079	ENDURE	PP	21/09/2019	-2	0.7	1.5	6	46	77	111	96
34	SODQ164	ENDURE	HPC	4/10/2019	-0.6	2.4	6.6	5.1	39	67	95	68
35	SODQ148	MAFI	HPC	30/09/2019	-7.7	-5.2	4.6	6.7	37	62	97	86
36	SODQ238	MAFI	HPC	30/10/2019	1.6	3.3	-0.3	6.7	45	76	112	116
37	SODQ106	ENDURE	PP	25/09/2019	2.7	5.7	1.4	1.8	33	62	81	61
38	SODQ115	LENNY	PP	26/09/2019	3.6	3	2.9	7.3	51	91	135	118
39	SODQ025	VALIDATE	PP	8/09/2019	5.2	3.9	-0.8	0.4		48	62	27
40	AHGR001	BOTTLE	N/T	20/03/2020	4.5	2	-0.5	3.4	21	38	53	49
41	AHGQ31	OAK	N/T	10/10/2019	-3.5	-0.3	-0.9	6.6	33	52	73	59
42	AHGQ19	JET	N/T	1/10/2019	4.3	4	0.2	3.2	29	45	63	40
43	AHGQ35	OAK	N/T	16/10/2019	-3.4	0.3	-0.8	6.7	34	53	81	68
44	AHGQ10	BOTTLE	N/T	22/09/2019	1.1	0.9	-0.4	4.5	25	42	59	64
45	AHGQ30	JET	N/T	8/10/2019	2.7	3.5	0.2	4.4	35	59	80	64
Yalgoo Average					2.2	2.7	-0.5	4.8	39	67	95	77
Breed Average					2.1	2	-0.4	4.3	33	56	78	68

MILK	SC	DC	CWT	EMA	RIB	RUMP	RBY	IMF	STH SR	NTH SR	SBMI	NTH SR
18	2.6	-1.8	85	4.1	0.2	-0.2	1	1.6	\$220	\$200	\$248	\$187
25	1.8	-2.4	74	6.7	1.8	2.3	0.8	1.6	\$174	\$160	\$184	\$136
17	2.2	-3	67	3.6	2.3	3.3	-0.6	2.5	\$197	\$185	\$203	\$146
19	3.4	-2.9	67	3.1	0.6	0.4	1	0.1	\$180	\$163	\$196	\$142
21	2.9	-2.2	72	7.2	-0.5	-0.5	2.7	0.6	\$186	\$170	\$192	\$138
22	3.7	-1.1	74	5.5	0.2	-0.3	1.5	2.1	\$189	\$175	\$223	\$175
19	1.8	-3	71	6.5	0.7	1.4	1.8	0.9	\$194	\$181	\$193	\$133
22	3.5	-3.7	64	6.5	2.3	2.6	0.5	2.3	\$182	\$163	\$171	\$114
20	0.3	-3.2	64	6	1.9	2.3	1	1.1	\$153	\$141	\$152	\$111
18	4.1	-4.3	77	6.1	0.7	0.6	1.5	1.2	\$185	\$168	\$178	\$133
21	2.7	-3.4	77	5.7	1.3	1.4	1.2	1.4	\$193	\$174	\$186	\$128
20	2	-3.3	66	4.2	1.7	2.5	0.1	2.1	\$170	\$165	\$187	\$146
19	3.2	-4.3	60	4.5	0.8	0.5	0.7	1.1	\$163	\$141	\$160	\$115
23	1.4	-1.3	64	3.9	1.4	1.9	0.5	0.2	\$128	\$112	\$134	\$101
16	3.4	-6.8	45	3.4	1.7	2	0.2	1.5	\$159	\$141	\$132	\$80
19	2.4	-1.9	68	5.9	-0.4	-1.1	2.1	0.7	\$174	\$156	\$184	\$134
19	0.5	-1	69	6.2	0.3	0.5	2	0.6	\$179	\$163	\$190	\$135
16	2.7	-1	64	4.4	0.5	-0.2	0.9	1.6	\$170	\$157	\$195	\$148
18	2.8	-3.9	58	5	2.2	2.6	0.2	1.8	\$167	\$156	\$168	\$118
23	3.6	-2.5	63	4	-0.7	-1.4	1.8	0.3	\$156	\$132	\$161	\$121
17	4.6	-5.8	62	4.6	0.9	1.1	1.7	0.2	\$173	\$158	\$161	\$116
18	2	-2.8	67	4.3	1.3	2.1	0	0.8	\$135	\$113	\$120	\$86
15	4.2	-4.2	79	7.4	0.7	1.8	2.5	0.6	\$219	\$207	\$209	\$145
22	2.2	-2.6	72	5.5	1.1	1.4	0.9	1.6	\$177	\$155	\$172	\$121
21	1.5	-1.7	74	4.8	0.4	0.5	1.9	0.2	\$162	\$145	\$163	\$117
21	4.2	-4.4	61	3.8	-0.2	-1.2	1.8	0.2	\$151	\$129	\$149	\$107
21	0.8	-2.7	55	4.8	0.7	0.3	1.4	0.8	\$132	\$116	\$133	\$99
20	1	-1.8	46	4.2	0.9	1.8	0.7	1	\$124	\$118	\$135	\$101
15	1.3	-1.5	41	2.8	2.7	3.8	-0.9	2.5	\$134	\$123	\$139	\$103
15	1.6	-1.1	50	3.6	2.3	3.3	-0.6	2.5	\$139	\$128	\$140	\$107
17	2	-3.5	55	4.4	0.3	0.4	0.7	0.9	\$156	\$139	\$170	\$126
17	2.8	-1.6	52	5.8	0.3	0	2.2	-0.1	\$138	\$135	\$155	\$116
21	2.5	-3.2	78	5.8	1.1	1.1	1.3	1.2	\$178	\$160	\$172	\$125
21	2.3	-4.1	67	6.4	0.2	-0.4	2	1.4	\$181	\$160	\$171	\$118
18	2.8	-0.8	61	4.9	1.6	2.2	0.1	1.3	\$115	\$94	\$102	\$76
23	3.3	-1.5	74	4.8	0.1	0.2	0.9	0.3	\$150	\$127	\$164	\$127
17	2.7	-4.2	66	6	0.8	0.6	1.5	1	\$171	\$162	\$169	\$118
26	3.9	-5.5	90	5.9	1.6	2.1	0.5	1.4	\$215	\$186	\$201	\$140
15	2	-3.1	53	6.2	1.7	1.9	0.8	2	\$163	\$161	\$165	\$116
8	0.6	-2.9	31	3.2	1.2	1.9	0.4	0.3	\$104	\$100	\$109	\$81
13	2	-	39	2.7	0.3	0.2	0.6	0.2	\$99	\$80	\$91	\$61
13	2.2	-3.1	43	3	0.9	0.9	0.7	1.1	\$138	\$129	\$141	\$98
14	2.5	-1.9	46	3.2	0	-0.1	1.4	-0.1	\$116	\$97	\$107	\$71
8	0.8	-1.5	33	2.8	0	-0.2	1.1	-0.1	\$86	\$75	\$89	\$68
16	2.5	-2.9	54	3.4	0.7	0.8	0.8	1.3	\$151	\$139	\$153	\$111
19	2.5	-2.9	65	5.1	1.0	1.1	1.0	1.2	\$167	\$152	\$170	\$123
16	2	-2.9	52	3.4	0.7	0.8	0.8	0.5	\$130	\$115	\$131	\$96



Lot 4 YALGOO QUAMBONE Q099 (PP)

Ident: SODQ099

Born: 24/09/2019

Eye Pigment: 100/100

CHURCHILL RED BULL 200Z (P)
 CHURCHILL KICKSTART 501C (IMP USA) (AI) (ET) (P)
 HVH OKSANA 4L 33N (P)
 Sire: **YALGOO NAPIER N002 (AI) (PP)**
 ALLENDALE ANZAC E114 (PP)
 YALGOO BLUSH L267 (ET) (P)
 YALGOO BLUSH A036 (P)

ELITE 4110 E212 (AI) (PP)
 YALGOO LEICHARDT L003 (AI) (PP)
 YALGOO BETTE J017 (P)
 Dam: **YALGOO VANESSA N128 (P)**
 YALGOO JET J157 (AI) (P)
 YALGOO VANESSA L106 (P)
 YALGOO VANESSA J198 (P)

\$ Index Values

Southern Self Replacing: +\$178
 Northern Self Replacing: +\$162
 Southern Baldy Maternal: +\$196
 Northern Baldy Terminal: +\$145

Purchaser:

Price \$:

June 2021 Hereford BREEDPLAN

CE (DIR)	CE (DTRS)	GL	BW	200	400	600	MCW	Milk	SS	DC	Cwt	EMA	Rib	RUMP	RBY%	IMF%
+8.1	+4.6	-3.2	+4.5	+42	+70	+101	+87	+19	+3.4	-2.9	+65	+3.5	+0.7	+0.6	+1.0	+0.2
37%	26%	56%	70%	63%	62%	65%	58%	47%	67%	31%	53%	43%	50%	54%	45%	50%

Traits Observed: CE,BWT,200WT(x2),400WT,600WT,SS,FAT,EMA,IMF,Genomics

Parent Verification: Sire: Verified, Dam: Not Verified

Notes: Outcross, homozygous calving ease sire with top 5% growth. Not a lot of bull's put those 4 attributes together. This classy Napier son is from a 2yo heifer and was used over stud heifers as a yearling. He is that rare find that will add profit from birth to finish and has equal merit to use over heifers and mature cows. Top 5% SC SBM NBT indexes, 10% GL CWT SSR NSR indexes, 15% CED 200 400 600. Market/ system suitability: SM, MSA F EU BB, MP

Lot 5 YALGOO PIONEER Q047 (AI) (PP)

Ident: SODQ047

Born: 16/09/2019

Eye Pigment: 100/100

ALLENDALE WATERHOUSE D1 (PP)
 DAYS ROBIN HOOD H38 (AI) (ET) (PP)
 ALLENDALE FANCY U5 (AI) (P)
 Sire: **HUNTER LAKES LANCELOT L103 (AI) (ET) (PP)**
 SOUTH BUKALONG WALLACE 2 (P)
 HUNTER LAKES FANCY F7 (AI) (P)
 ALLENDALE FANCY D24 (AI) (P)

KCF BENNETT 3008 M326 (P)
 NJW 73S M326 TRUST 100W ET (IMP USA) (ET) (P)
 NJW P606 72N DAYDREAM 73S (P)
 Dam: **YALGOO BUFFY M117 (AI) (ET) (P)**
 YALGOO FRONTEIR A092 (AI) (P)
 YALGOO BUFFY D191 (P)
 YALGOO BUFFY R185 (P)

\$ Index Values

Southern Self Replacing: +\$181
 Northern Self Replacing: +\$169
 Southern Baldy Maternal: +\$189
 Northern Baldy Terminal: +\$137

Purchaser:

Price \$:

June 2021 Hereford BREEDPLAN

CE (DIR)	CE (DTRS)	GL	BW	200	400	600	MCW	Milk	SS	DC	Cwt	EMA	Rib	RUMP	RBY%	IMF%
+2.8	+4.5	-2.1	+5.2	+42	+68	+100	+82	+21	+2.6	-1.9	+66	+7.1	-0.2	+0.3	+2.6	+0.6
46%	38%	74%	73%	69%	68%	70%	62%	56%	74%	39%	60%	51%	57%	60%	53%	58%

Traits Observed: GL,CE,BWT,200WT(x2),400WT,600WT,SS,FAT,EMA,IMF,Genomics

Parent Verification: Sire: Verified, Dam: Not Verified

Notes: This homozygous star has claims as the most complete sire on offer. Pioneer is all quality. He is superbly made, moderate and extra thick. His dam's first calf (P007) was a high seller last year and Koanui Poll Herefords purchased the NZ rights in him. His first drop of weaner bull's at Yalgoo look the goods. This guy has all the same attributes as his brother, with a tad more base width and top. If you are after a stud sire that will add balanced performance, improve phenotype and looks like a superior breeding bull then I encourage you take a look at Pioneer Q047. Used as a yearling over stud cows. Top 20% CEDRTs, 15% 400, MILK CS, 10% 200 and all indexes, 5% 600 CWT 1% EMA. Market/ System suitability: SM, F, EU, HGS BB W

Lot 6 YALGOO NEWMARKET Q250 (AI) (P)

Ident: SODQ250

Born: 13/09/2019

Eye Pigment: 100/100

ALLENDALE YACKA (AI) (P)
 ALLENDALE ANZAC E114 (PP)
 ALLENDALE DAWN B22 (AI) (ET) (P)
 Sire: **WIRRUNA MATTY M288 (AI) (ET) (PP)**
 ELITE 4110 E212 (AI) (PP)
 WIRRUNA CIRCLE H13 (AI) (PP)
 WIRRUNA CIRCLE F31 (AI) (PP)

KCF BENNETT 3008 M326 (P)
 NJW 73S M326 TRUST 100W ET (IMP USA) (ET) (P)
 NJW P606 72N DAYDREAM 73S (P)
 Dam: **YALGOO BELLE KASHMIR L011 (AI) (P)**
 YALGOO FRONTEIR A092 (AI) (P)
 YALGOO BELLE KASHMIR E212 (P)
 YALGOO BELLE KASHMIR Y039 (P)

\$ Index Values

Southern Self Replacing: +\$191
 Northern Self Replacing: +\$181
 Southern Baldy Maternal: +\$223
 Northern Baldy Terminal: +\$175

Purchaser:

Price \$:

June 2021 Hereford BREEDPLAN

CE (DIR)	CE (DTRS)	GL	BW	200	400	600	MCW	Milk	SS	DC	Cwt	EMA	Rib	RUMP	RBY%	IMF%
+10.6	+6.9	-7.4	+2.4	+39	+72	+99	+86	+21	+3.6	-0.9	+68	+5.8	+0.2	-0.1	+1.6	+2.1
51%	41%	76%	74%	70%	70%	72%	64%	57%	76%	42%	64%	55%	61%	64%	55%	62%

Traits Observed: GL,BWT,200WT(x2),400WT,600WT,SS,FAT,EMA,IMF,Genomics

Parent Verification: Sire: Verified, Dam: Not Verified

Notes: Identified as a potential SUPER SIRE for HALS sire program. Genotypic gem with excellent structural scores. A bigger framed, soft Matty with an absolutely ideal spread of EBVS. Covers all bases from calving ease (top 5% CE and 1% GL) to growth (top 10%) and awesome carcass (top 10% EMA and 5% IMF). His dam is the "donor" type. She is a big volume cow, soft, dark and with an outstanding udder. Putting Trust and Matty together has given you one of the more profitable young bulls around. Used as a yearling over stud heifers. Top 10% 400, 600, MILK, RBY, 5% CEDIR, CEDRTs, SS, IMF SSR and NSR indexes, 1% GL SBM, NBM indexes. Market/ system suitability: MSA, F, EU, HGS, BB, MP

Lot 7 YALGOO QUINCY Q063 (AI) (S)

Ident: SODQ063 Born: 19/09/2019 Eye Pigment: 100/100

ALLEDALE WATERHOUSE D1 (PP)
DAYS ROBIN HOOD H38 (AI) (ET) (PP)
ALLEDALE FANCY U5 (AI) (P)
Sire: **HUNTER LAKES LANCELOT L103 (AI) (ET) (PP)**
SOUTH BUKALONG WALLACE 2 (P)
HUNTER LAKES FANCY F7 (AI) (P)
ALLEDALE FANCY D24 (AI) (P)

SHF WONDER M326 W18 ET (P)
NJW 73S W18 HOMEGROWN 8Y (IMP USA) (PP)
NJW P606 72N DAYDREAM 73S (P)
Dam: **YALGOO TIGRESS L077 (ET) (P)**
KARINA VALDRES (AI) (S)
YALGOO TIGRESS Z241 (H#)
YALGOO TIGRESS V110 (AI) (P)

\$ Index Values
Southern Self Replacing: +\$192
Northern Self Replacing: +\$181
Southern Baldy Maternal: +\$193
Northern Baldy Terminal: +\$134

Purchaser:
.....
Price \$:

June 2021 Hereford BREEDPLAN																
CE (DIR)	CE (DTRS)	GL	BW	200	400	600	MCW	Milk	SS	DC	Cwt	EMA	Rib	RUMP	RBY%	IMF%
+1.9	+4.8	-2.6	+5.1	+42	+72	+100	+74	+19	+2.0	-2.8	+68	+6.8	+0.7	+1.4	+2.0	+0.8
44%	36%	74%	73%	68%	68%	70%	62%	54%	75%	37%	59%	50%	56%	59%	51%	57%

Traits Observed: GL,CE,BWT,200WT(x2),400WT,600WT,SS,FAT,EMA,IMF,Genomics Parent Verification: Sire: Verified, Dam: Not Verified

Notes: I rate Quincy in the top 2 or 3 bulls we've bred or owned. Q063 brings together the critical attributes needed in a herd moving sire. An absolute powerhouse, with huge volume and extra dimension and sound structure. Ideally balanced EBV's culminating in top 5% indexes. The most unique donor dam around. Dam L077, has all the functionality you need, with an extraordinary amount of muscle and volume. She had the highest performing calf by far in the 2020 drop. Quincy Q063 backed this up with superior raw data under pressure; he was mated at 14 months to stud cows for 6 weeks and still had the highest EMA of the entire drop at scanning. If your cattle need 'modernising' in terms of carcass shape; without sacrificing quality or performance I encourage you to take a look at Q063. Top 10% GL, 200, 600, SBM and NBM index, 5% 400, EMA SSR, NSR indexes. Market/ system suitability: SM, MSA, F, EU

Lot 8 YALGOO MINOTAUR Q132 (AI) (PP)

Ident: SODQ132 Born: 28/09/2019 Eye Pigment: 100/100

SCHU-LAR ON TARGET 22S (IMP USA) (ET) (P)
KCF BENNETT ENCORE Z311 (ET) (PP)
KCF MISS REVOLUTION X338 (ET) (P)
Sire: **NJW 79Z Z311 ENDURE 173D (IMP USA) (ET) (PP)**
NJW 73S M326 TRUST 100W ET (IMP USA) (ET) (P)
BW 91H 100W RITA 79Z (ET) (P)
REMITALL RITA 91H (P)

VALMA JAMBOREE Y41 (P)
VALMA MAGNUM II (PP)
VALMA ADVANCER'S BANKSIA S86 (P)
Dam: **YALGOO MELODY H13 (P)**
EBBX BOLLINGER (AI) (ET) (P)
YALGOO MELODY E204 (P)
YALGOO MELODY Z023 (P)

\$ Index Values
Southern Self Replacing: +\$179
Northern Self Replacing: +\$164
Southern Baldy Maternal: +\$168
Northern Baldy Terminal: +\$116

Purchaser:
.....
Price \$:

June 2021 Hereford BREEDPLAN																
CE (DIR)	CE (DTRS)	GL	BW	200	400	600	MCW	Milk	SS	DC	Cwt	EMA	Rib	RUMP	RBY%	IMF%
-1.8	+1.6	+3.9	+4.0	+39	+63	+95	+63	+23	+3.7	-3.9	+61	+6.8	+2.7	+2.9	+0.5	+2.1
47%	33%	74%	74%	69%	69%	71%	64%	57%	76%	38%	59%	52%	57%	60%	52%	58%

Traits Observed: GL,CE,BWT,200WT(x2),400WT,600WT,SS,FAT,EMA,IMF,Genomics Parent Verification: Sire: Verified, Dam: Not Verified

Notes: Minotaur was our pick of the Endure sons to use over cows. His moderate, thick and powerful phenotype is complimented with superior paddock performance. After a 6 week mating with stud cows, Q132 scanned the second highest IMF and EMA of the entire drop. His dam has always produced superior, sound sale bulls with extra performance. A homozygous stud with the highly desirable combination of moderate birth, top 5% SS, EMA, Fats and top 1% IMF. Hard to find these traits in such an excellent phenotype. Top 15% MILK, CWT, 10% SSR and NSR indexes, 5% SS, EMA, RIB, RUMP, 1% IMF. Market/ system suitability: SM, MSA, F, HGS, BB, W

Lot 9 YALGOO QUITO Q198 (P)

Ident: SODQ198 Born: 14/10/2019 Eye Pigment: 100/100

STUDBROOK D'ARTAGNION V086 (AI) (ET) (S)
OTAPAWA SPARK 3060 (IMP NZL) (AI) (ET) (P)
OTAPAWA SPOT P30 (P)
Sire: **TOBRUK LENNOX (ET) (PP)**
MOUNT DIFFICULT FELLIS Y12 (AI) (P)
PINE HILL MARITANA A619 (AI) (P)
PINE HILL MARITANA W575 (AI) (P)

KCF BENNETT 3008 M326 (P)
NJW 73S M326 TRUST 100W ET (IMP USA) (ET) (P)
NJW P606 72N DAYDREAM 73S (P)
Dam: **YALGOO PERSISTANCE J139 (AI) (P)**
KESWICK BEYOND A188 (AI) (P)
YALGOO PERSISTANCE E003 (P)
KESWICK PERSISTANCE B130 (P)

\$ Index Values
Southern Self Replacing: +\$155
Northern Self Replacing: +\$144
Southern Baldy Maternal: +\$154
Northern Baldy Terminal: +\$113

Purchaser:
.....
Price \$:

June 2021 Hereford BREEDPLAN																
CE (DIR)	CE (DTRS)	GL	BW	200	400	600	MCW	Milk	SS	DC	Cwt	EMA	Rib	RUMP	RBY%	IMF%
-0.5	+3.7	+2.2	+5.7	+39	+67	+92	+85	+20	+0.3	-3.1	+60	+6.3	+1.9	+2.4	+1.2	+1.1
47%	40%	65%	73%	68%	68%	69%	62%	58%	70%	42%	60%	51%	57%	61%	53%	58%

Traits Observed: CE,BWT,200WT(x2),400WT,600WT,SS,FAT,EMA,IMF,Genomics Parent Verification: Sire: Verified, Dam: Not Tested

Notes: Lennox/ Trust will give you extra kg/DSE at a lower cost. Lennox has crept up in birth weight but we will keep using him because he does everything else right. He gives us sound cattle with a nice maturity pattern and highly fertile and easy calving females. He looks like a sire with good 'stayability' in his females and the structural soundness and doability of his sons mean's they will produce calves at a lower cost than most. High performing, soft bull from a typical Trust daughter. Top 15% 400, MILK, CWT, 10% Rib Rump, 5% EMA. Market/ system suitability: MSA, F, EU, HGS, BB

Lot 10 YALGOO PARAGUAY Q081 (AI) (PP)

Ident: SODQ081

Born: 21/09/2019

Eye Pigment: 100/100

YARRAM HOT SHOT P028 (AI) (H)
 CAPETHORNE HOT SHOT 03 22 (P)
 CAPETHORNE AMETHYST U21 (P)
 Sire: **MATARIKI HOLY - SMOKE (IMP NZL) (P)**
 KOANUI BULL'S-EYE R60 (P)
 MATARIKI GIRLIE 00323 (P)
 MATARIKI GIRLIE 3 (P)

KCF BENNETT 3008 M326 (P)
 NJW 73S M326 TRUST 100W ET (IMP USA) (ET) (P)
 NJW P606 72N DAYDREAM 73S (P)
 Dam: **YALGOO MEAGAN L044 (AI) (P)**
 ALLENDALE WATERHOUSE D1 (PP)
 YALGOO MEAGAN H89 (AI) (P)
 YALGOO MEAGAN B066 (P)

\$ Index Values

Southern Self Replacing: +\$194
 Northern Self Replacing: +\$178
 Southern Baldy Maternal: +\$187
 Northern Baldy Terminal: +\$139

Purchaser:

Price \$:

June 2021 Hereford BREEDPLAN

CE (DIR)	CE (DTRS)	GL	BW	200	400	600	MCW	Milk	SS	DC	Cwt	EMA	Rib	RUMP	RBY%	IMF%
-1.0	+0.3	-2.0	+7.0	+50	+84	+118	+110	+18	+4.1	-4.2	+76	+6.5	+0.8	+0.8	+1.7	+1.2
56%	53%	75%	74%	70%	69%	71%	67%	64%	72%	51%	64%	58%	62%	65%	59%	63%

Traits Observed: GL,CE,BWT,200WT(x2),400WT,600WT,SS,FAT,EMA,IMF,Genomics

Parent Verification: Sire: Verified, Dam: Not Verified

Notes: A beast of a Holy Smoke son. His dam has quickly become one our most valuable cows. We used her Lennox son last year and his EBV's and progeny reflect what a valuable young sire he is. Her Matty son for next year looks outstanding. Trust female's are simply more productive. Trust is still top 15% or better for 10 traits and he was born 12 years ago. He is one of those very rare sire's that gives a huge genetic boost to a program and his daughters are his strongest asset. Top 15% IMF, SBM and NSM indexes, 10% SSR and NSR indexes, 5% SC, CWT, EMA, 1% 200 400 600. Market/ system suitability: MSA, F, EU, HGS, BB, W

Lot 11 YALGOO NIKKO Q093 (AI) (P)

Ident: SODQ093

Born: 23/09/2019

Eye Pigment: 100/100

SCHU-LAR ON TARGET 22S (IMP USA) (ET) (P)
 KCF BENNETT ENCORE Z311 (ET) (PP)
 KCF MISS REVOLUTION X338 (ET) (P)
 Sire: **NJW 79Z Z311 ENDURE 173D (IMP USA) (ET) (PP)**
 NJW 73S M326 TRUST 100W ET (IMP USA) (ET) (P)
 BW 91H 100W RITA 79Z (ET) (P)
 REMITALL RITA 91H (P)

MATARIKI HOLY - SMOKE (IMP NZL) (P)
 YALGOO BANDIT J079 (AI) (P)
 YALGOO BETTE E235 (P)
 Dam: **YALGOO BETTE L090 (P)**
 VALMA MAGNUM II (PP)
 YALGOO BETTE J286 (P)
 YALGOO BETTE D174 (P)

\$ Index Values

Southern Self Replacing: +\$205
 Northern Self Replacing: +\$189
 Southern Baldy Maternal: +\$195
 Northern Baldy Terminal: +\$133

Purchaser:

Price \$:

June 2021 Hereford BREEDPLAN

CE (DIR)	CE (DTRS)	GL	BW	200	400	600	MCW	Milk	SS	DC	Cwt	EMA	Rib	RUMP	RBY%	IMF%
-1.4	+1.8	+3.2	+5.4	+48	+80	+111	+74	+22	+2.6	-3.4	+73	+6.3	+1.7	+1.8	+1.5	+1.1
45%	31%	75%	73%	69%	68%	69%	64%	57%	66%	36%	60%	51%	57%	60%	52%	58%

Traits Observed: GL,CE,BWT,200WT(x2),400WT,600WT,SS,FAT,EMA,IMF,Genomics

Parent Verification: Sire: Verified, Dam: Not Verified

Notes: High indexing, long Endure son. We thought so much of the Bandit J079 daughters we bought him back as an older sire from Fred Mathieu's excellent Checker's herd. Top 10% EMA, IMF, NSR, SBM indexes, Top 5% 200, 400, 600, CWT SSR index. Market/ system suitability: MSA, F, EU, HGS, BB, W

Lot 12 YALGOO QUEST Q004 (AI) (PP)

Ident: SODQ004

Born: 26/08/2019

Eye Pigment: 100/100

ALLENDALE YACKA (AI) (P)
 ALLENDALE ANZAC E114 (PP)
 ALLENDALE DAWN B22 (AI) (ET) (P)
 Sire: **WIRRUNA MATTY M288 (AI) (ET) (PP)**
 ELITE 4110 E212 (AI) (PP)
 WIRRUNA CIRCLE H13 (AI) (PP)
 WIRRUNA CIRCLE F31 (AI) (PP)

CAPETHORNE HOT SHOT 03 22 (P)
 MATARIKI HOLY - SMOKE (IMP NZL) (P)
 MATARIKI GIRLIE 00323 (P)
 Dam: **YALGOO RAINIE N058 (AI) (P)**
 REMITALL ONLINE 122L (IMP CAN) (P)
 YALGOO RAINIE F157 (AI) (P)
 YALGOO RAINIE B006 (AI) (P)

\$ Index Values

Southern Self Replacing: +\$161
 Northern Self Replacing: +\$158
 Southern Baldy Maternal: +\$177
 Northern Baldy Terminal: +\$139

Purchaser:

Price \$:

June 2021 Hereford BREEDPLAN

CE (DIR)	CE (DTRS)	GL	BW	200	400	600	MCW	Milk	SS	DC	Cwt	EMA	Rib	RUMP	RBY%	IMF%
+8.7	+2.7	-8.2	+0.5	+36	+59	+74	+56	+18	+1.7	-3.2	+61	+4.1	+1.9	+2.6	+0.0	+2.1
52%	43%	75%	73%	69%	69%	71%	64%	56%	75%	43%	63%	55%	60%	63%	55%	62%

Traits Observed: GL,CE,BWT,200WT(x2),400WT,600WT,SS,FAT,EMA,IMF,Genomics

Parent Verification: Sire: Verified, Dam: Not Tested

Notes: Extreme calving ease in this sound, homozygous polled, meaty Matty son. With a gestation length of -8.1, BW of 0.6 and a real calving ease shape, Q4 is an excellent heifer bull option. Importantly he'll do more than that with breed average growth and top 5% IMF. Quest Q4 was used as a yearling over stud heifers. Top 15% SSR index, 10% CE NSR and SBM indexes, 5% IMF NBM index, 1% GL. Market/ system suitability: SM, MSA, F, BB, HB

Lot 13 YALGOO QUAD Q236 (PP)

Ident: SODQ236 Born: 28/10/2019 Eye Pigment: 065/060

STUDBROOK D'ARTAGNION V086 (AI) (ET) (S)
OTAPAWA SPARK 3060 (IMP NZL) (AI) (ET) (P)
OTAPAWA SPOT P30 (P)
Sire: **TOBRUK LENNOX (ET) (PP)**
MOUNT DIFFICULT FELLIS Y12 (AI) (P)
PINE HILL MARITANA A619 (AI) (P)
PINE HILL MARITANA W575 (AI) (P)

SHF WONDER M326 W18 ET (P)
NJW 73S W18 HOMEGROWN 8Y (IMP USA) (PP)
NJW P606 72N DAYDREAM 73S (P)
Dam: **YALGOO TRIPLE TREAT L050 (AI) (P)**
MARKOWEN INTRUDER (PP)
YALGOO TRIPLE TREAT D224 (P)
YALGOO TRIPLE TREAT Z116 (P)

\$ Index Values
Southern Self Replacing: +\$160
Northern Self Replacing: +\$139
Southern Baldy Maternal: +\$158
Northern Baldy Terminal: +\$113

Purchaser:
.....
Price \$:

June 2021 Hereford BREEDPLAN																
CE (DIR)	CE (DTRS)	GL	BW	200	400	600	MCW	Milk	SS	DC	Cwt	EMA	Rib	RUMP	RBY%	IMF%
+0.4	+5.2	+1.1	+6.9	+41	+69	+97	+90	+20	+3.2	-4.4	+54	+4.5	+0.9	+0.5	+0.8	+1.0
45%	37%	65%	72%	68%	68%	70%	62%	57%	73%	39%	59%	50%	56%	60%	52%	57%

Traits Observed: CE,BWT,200WT,400WT,600WT,SS,FAT,EMA,IMF,Genomics Parent Verification: Sire: Verified, Dam: Not Tested
Notes: Good body on this sound, functional 'Lenny' son. Dam is a typical 8Y daughter, who Ned and Jan Ward (and me) rate as the best cows in their renowned NJW herd. Top 15% CEDRTs, 10% 200, 400, 600, SS. Market/ system suitability: SM, MSA, F, EU, HGS, BB

Lot 14 YALGOO QUENTIN Q210 (P)

Ident: SODQ210 Born: 18/10/2019 Eye Pigment: 095/100

SHF WONDER M326 W18 ET (P)
NJW 73S W18 HOMEGROWN 8Y (IMP USA) (PP)
NJW P606 72N DAYDREAM 73S (P)
Sire: **YALGOO MAFIOSO M196 (AI) (P)**
BOWMONT STORM C093 (H)
YALGOO BEAUTY H209 (AI) (P)
YALGOO BEAUTY Z183 (P)

MATARIKI HOLY - SMOKE (IMP NZL) (P)
YALGOO BANDIT J079 (AI) (P)
YALGOO BETTE E235 (P)
Dam: **YALGOO ZELDA L102 (P)**
NJW 73S M326 TRUST 100W ET (IMP USA) (ET) (P)
YALGOO ZELDA J344 (AI) (ET) (P)
YALGOO ZELDA Y109 (P)

\$ Index Values
Southern Self Replacing: +\$128
Northern Self Replacing: +\$113
Southern Baldy Maternal: +\$134
Northern Baldy Terminal: +\$102

Purchaser:
.....
Price \$:

June 2021 Hereford BREEDPLAN																
CE (DIR)	CE (DTRS)	GL	BW	200	400	600	MCW	Milk	SS	DC	Cwt	EMA	Rib	RUMP	RBY%	IMF%
-0.4	-0.3	-0.2	+5.1	+41	+66	+91	+77	+24	+1.3	-1.2	+57	+4.1	+1.5	+2.2	+0.5	+0.2
39%	31%	57%	73%	67%	67%	70%	62%	52%	74%	35%	57%	47%	54%	58%	50%	54%

Traits Observed: CE,BWT,200WT(x2),400WT,600WT,SS,FAT,EMA,IMF,Genomics Parent Verification: Sire: Verified, Dam: Not Tested
Notes: Sire Mafioso was our 8Y keeper bull. Although we could never get a lot of semen out from the US, I believe him to be the best phenotype bull I've used. They were legitimate "extra dimensional" cattle displaying more carcass than any bull we've used, yet remaining really sappy, easy doing cattle. Q210 is extra strong though the loin and hip. Top 15% 400, CWT, 10% 200. Market/ system suitability: SM, F, EU, HGS

Lot 15 YALGOO QUIXOTE Q194 (PP)

Ident: SODQ194 Born: 11/10/2019 Eye Pigment: 100/100

STUDBROOK D'ARTAGNION V086 (AI) (ET) (S)
OTAPAWA SPARK 3060 (IMP NZL) (AI) (ET) (P)
OTAPAWA SPOT P30 (P)
Sire: **TOBRUK LENNOX (ET) (PP)**
MOUNT DIFFICULT FELLIS Y12 (AI) (P)
PINE HILL MARITANA A619 (AI) (P)
PINE HILL MARITANA W575 (AI) (P)

HEATHERDALE OPIUM U78 (AI) (P)
VALMA MAXIMUS (AI) (P)
VALMA EPICS WATTLE W32 (P)
Dam: **YALGOO MELODY G132 (P)**
YALGOO BUNKER W207 (P)
YALGOO MELODY Z023 (P)
YALGOO MELODY X102 (P)

\$ Index Values
Southern Self Replacing: +\$160
Northern Self Replacing: +\$143
Southern Baldy Maternal: +\$132
Northern Baldy Terminal: +\$80

Purchaser:
.....
Price \$:

June 2021 Hereford BREEDPLAN																
CE (DIR)	CE (DTRS)	GL	BW	200	400	600	MCW	Milk	SS	DC	Cwt	EMA	Rib	RUMP	RBY%	IMF%
-3.2	-0.3	+1.1	+4.6	+35	+53	+76	+41	+16	+3.3	-7.0	+43	+3.3	+1.7	+2.1	+0.3	+1.4
47%	40%	62%	73%	68%	68%	69%	63%	58%	64%	41%	59%	49%	56%	60%	52%	57%

Traits Observed: CE,BWT,200WT(x2),400WT,600WT,SS,FAT,EMA,IMF,Genomics Parent Verification: Sire: Verified, Dam: Not Tested
Notes: Excellent fertility bull. Why? DC is top 1%, top 5% SC, very positive fat and IMF. His dam is such a sound, moderate cow and Q194 will breed very fertile, moderate and efficient females. Ideal bull for tight joining periods and high stocking rates. Top 15% FATS, 10% IMF, 5% SC, 1% DC. Market/ system suitability: SM, MSA, F, BB

Lot 16 YALGOO LIEUTENANT Q110 (AI) (PP)

Ident: SODQ110

Born: 25/09/2019

Eye Pigment: 100/100

SCHU-LAR ON TARGET 22S (IMP USA) (ET) (P)
 KCF BENNETT ENCORE Z311 (ET) (PP)
 KCF MISS REVOLUTION X338 (ET) (P)
 Sire: **NJW 79Z Z311 ENDURE 173D (IMP USA) (ET) (PP)**
 NJW 73S M326 TRUST 100W ET (IMP USA) (ET) (P)
 BW 91H 100W RITA 79Z (ET) (P)
 REMITALL RITA 91H (P)

STUDBROOK D'ARTAGNION V086 (AI) (ET) (S)
 YALGOO VICEROY E316 (ET) (PP)
 YALGOO VANESSA T104 (P)
 Dam: **YALGOO CHERRYRIPE H11 (P)**
 YALGOO ZAPPA Z256 (P)
 YALGOO CHERRYRIPE C006 (P)
 YALGOO CHERRYRIPE X090 (P)

\$ Index Values

Southern Self Replacing: +\$182
 Northern Self Replacing: +\$166
 Southern Baldy Maternal: +\$190
 Northern Baldy Terminal: +\$137

Purchaser:

Price \$:

June 2021 Hereford BREEDPLAN

CE (DIR)	CE (DTRS)	GL	BW	200	400	600	MCW	Milk	SS	DC	Cwt	EMA	Rib	RUMP	RBY%	IMF%
+3.0	+4.3	+2.1	+4.3	+42	+74	+103	+84	+19	+2.4	-1.7	+64	+6.4	+0.1	-0.8	+2.2	+0.5
45%	31%	74%	73%	68%	67%	68%	62%	57%	66%	36%	59%	51%	57%	59%	51%	57%

Traits Observed: GL,CE,BWT,200WT(x2),400WT,600WT,SS,FAT,EMA,IMF,Genomics

Parent Verification: Sire: Verified, Dam: Not Verified

Notes: Q110 might just be the preferred sire option of the Endure sons. Homozygous polled and he just oozes quality. Mobile, strong hip and very soft. Lieutenant's dam was a clone of her sire Viceroy. Sound with heaps of volume and base width. A bull with a lot of potential by one of the up and coming stars of the breed. An early opportunity to get a very attractive Endure son that put's together genotype and phenotype. Top 15% 400 NSR, 10% 600 CWT, SSR, SBM, NBM, 5% EMA, RBY. Market/ system suitability: F, EU, HGS, BB, W, MP

Lot 17 YALGOO QUART Q109 (AI) (P)

Ident: SODQ109

Born: 25/09/2019

Eye Pigment: 100/100

ALLEDALE WATERHOUSE D1 (PP)
 DAYS ROBIN HOOD H38 (AI) (ET) (PP)
 ALLEDALE FANCY U5 (AI) (P)
 Sire: **HUNTER LAKES LANCELOT L103 (AI) (ET) (PP)**
 SOUTH BUKALONG WALLACE 2 (P)
 HUNTER LAKES FANCY F7 (AI) (P)
 ALLEDALE FANCY D24 (AI) (P)

KCF BENNETT 3008 M326 (P)
 NJW 73S M326 TRUST 100W ET (IMP USA) (ET) (P)
 NJW P606 72N DAYDREAM 73S (P)
 Dam: **YALGOO PERSISTANCE M038 (AI) (S)**
 KESWICK BEYOND A188 (AI) (P)
 YALGOO PERSISTANCE E003 (P)
 KESWICK PERSISTANCE B130 (P)

\$ Index Values

Southern Self Replacing: +\$176
 Northern Self Replacing: +\$159
 Southern Baldy Maternal: +\$189
 Northern Baldy Terminal: +\$136

Purchaser:

Price \$:

June 2021 Hereford BREEDPLAN

CE (DIR)	CE (DTRS)	GL	BW	200	400	600	MCW	Milk	SS	DC	Cwt	EMA	Rib	RUMP	RBY%	IMF%
+3.1	+4.8	+0.2	+5.5	+40	+69	+104	+86	+20	+0.4	-0.5	+66	+6.4	+0.3	+0.6	+2.0	+0.6
45%	37%	75%	73%	68%	68%	71%	62%	54%	75%	39%	59%	51%	56%	60%	52%	57%

Traits Observed: GL,CE,BWT,200WT(x2),400WT,600WT,SS,FAT,EMA,IMF,Genomics

Parent Verification: Sire: Verified, Dam: Not Verified

Notes: Strong balance of EBVs on a long, very thick Lancelot son with a big hip. Lancelot is such a predictable sire; breeding thick, functional cattle. Being ideal in their maturity pattern, well muscled with good fat and structure they are versatile enough for a short fed domestic job but have enough growth to be finished at heavier weights on grass. The industry will be well placed with more Lancelot son's running around. Top 15% 400, 10% all indexes, 5% 600, EMA, RBY. Market/ system suitability: SM, F, EU, HGS, W

Lot 18 YALGOO PEACEMAKER Q038 (AI) (TW) (P)

Ident: SODQ038

Born: 14/09/2019

Eye Pigment: 100/100

ALLEDALE YACKA (AI) (P)
 ALLEDALE ANZAC E114 (PP)
 ALLEDALE DAWN B22 (AI) (ET) (P)
 Sire: **WIRRUNA MATTY M288 (AI) (ET) (PP)**
 ELITE 4110 E212 (AI) (PP)
 WIRRUNA CIRCLE H13 (AI) (PP)
 WIRRUNA CIRCLE F31 (AI) (PP)

KJ HVH 33N REDEEM 485T ET (IMP USA) (P)
 CHURCHILL STUD 3134A (IMP USA) (PP)
 CHURCHILL LADY 002X ET (P)
 Dam: **YALGOO TIGRESS L265 (ET) (P)**
 KARINA VALDRES (AI) (S)
 YALGOO TIGRESS Z241 (H#)
 YALGOO TIGRESS V110 (AI) (P)

\$ Index Values

Southern Self Replacing: +\$169
 Northern Self Replacing: +\$156
 Southern Baldy Maternal: +\$191
 Northern Baldy Terminal: +\$146

Purchaser:

Price \$:

June 2021 Hereford BREEDPLAN

CE (DIR)	CE (DTRS)	GL	BW	200	400	600	MCW	Milk	SS	DC	Cwt	EMA	Rib	RUMP	RBY%	IMF%
+8.3	+6.8	-4.8	+3.9	+38	+67	+91	+80	+16	+2.6	-1.0	+60	+4.5	+0.6	-0.1	+0.9	+1.5
51%	40%	67%	71%	70%	70%	71%	64%	57%	69%	41%	64%	56%	61%	64%	55%	62%

Traits Observed: BWT,200WT(x2),600WT,SS,FAT,EMA,IMF,Genomics

Parent Verification: Sire: Verified, Dam: Not Verified

Notes: Half brother was a high seller in 2020 to Truro and Yavenville. Peacemaker is a twin with incredible data and a powerhouse dam. Join him to some heifers, and if he gets too big you'll get equal value over mature cows. Top 15% 400, SSR and NSR, 10% CED, IMF, 5% CEDRTs, GL SBM and NSM indexes. Market/ system suitability: SM, MSA, F EU, BB, MP

Lot 19 YALGOO QATAR Q118 (AI) (PP)

Ident: SODQ118 Born: 27/09/2019 Eye Pigment: 100/100

ALLENDAL YACKA (AI) (P)
ALLENDAL ANZAC E114 (PP)
ALLENDAL DAWN B22 (AI) (ET) (P)
Sire: CURRACABARK MATTHEW M101 (AI) (ET) (PP)
SOUTH BUKALONG WALLACE 2 (P)
CURRACABARK MINERVA D449 (AI) (P)
SEVENBARDOT MINERVA A253 (P)

KJ HVH 33N REDEEM 485T ET (IMP USA) (P)
CHURCHILL STUD 3134A (IMP USA) (PP)
CHURCHILL LADY 002X ET (P)
Dam: YALGOO BELLE PRUNICE M097 (AI) (P)
MAWARRA SANDSTORM ET1 (AI) (ET) (H)
YALGOO BELLE PRUNICE G010 (AI) (P)
YALGOO BELLE PRUNICE C101 (P)

\$ Index Values
Southern Self Replacing: +\$165
Northern Self Replacing: +\$153
Southern Baldy Maternal: +\$166
Northern Baldy Terminal: +\$117

Purchaser:
.....
Price \$:

June 2021 Hereford BREEDPLAN																
CE (DIR)	CE (DTRS)	GL	BW	200	400	600	MCW	Milk	SS	DC	Cwt	EMA	Rib	RUMP	RBY%	IMF%
+3.5	+3.6	+0.6	+3.5	+34	+56	+80	+55	+19	+2.8	-3.8	+55	+5.6	+2.3	+2.7	+0.3	+1.7
42%	34%	71%	72%	67%	66%	69%	61%	52%	73%	36%	56%	47%	53%	57%	50%	53%

Traits Observed: GL,CE,BWT,200WT(x2),400WT,600WT,SS,FAT,EMA,IMF,Genomics Parent Verification: Sire: Verified, Dam: Not Verified
Notes: Soft, classy Matthew son with beautifully balanced data. Sire was strong topped with immaculate feet. Similar in use to the previous lot, in that he's suitable for heifers and cows. Homozygous polled. Top 15% SS, SSR and NSR indexes, 10% Rib, Rump, 5% EMA IMF. Market/ system suitability: SM, MSA, BB, MP

Lot 20 YALGOO LECTOR Q133 (PP)

Ident: SODQ133 Born: 28/09/2019 Eye Pigment: 100/100

KOANUI UNANIMOUS 0408 (P)
KOANUI TECHNO 3062 (IMP NZL) (PP)
KOANUI BLUSH 6455 (P)
Sire: YALGOO MYSTIC N085 (AI) (S)
NJW 73S M326 TRUST 100W ET (IMP USA) (ET) (P)
YALGOO DONNA BELLA K073 (AI) (P)
YALGOO DONNA BELLA D032 (P)

HEATHERDALE OPIUM U78 (AI) (P)
VALMA MAXIMUS (AI) (P)
VALMA EPICS WATTLE W32 (P)
Dam: YALGOO SHANGRI LA F145 (P)
YALGOO GUARDIAN N91 (AI) (P)
YALGOO SHANGRI LA T145 (P)
YALGOO SHANGRI LA N70 (P)

\$ Index Values
Southern Self Replacing: +\$157
Northern Self Replacing: +\$133
Southern Baldy Maternal: +\$163
Northern Baldy Terminal: +\$121

Purchaser:
.....
Price \$:

June 2021 Hereford BREEDPLAN																
CE (DIR)	CE (DTRS)	GL	BW	200	400	600	MCW	Milk	SS	DC	Cwt	EMA	Rib	RUMP	RBY%	IMF%
+2.7	-1.0	+2.3	+4.8	+38	+69	+96	+76	+23	+3.6	-2.4	+61	+3.9	-0.5	-1.2	+1.7	+0.4
41%	35%	59%	71%	65%	66%	69%	61%	54%	74%	38%	57%	47%	53%	57%	49%	54%

Traits Observed: CE,BWT,200WT(x2),400WT,600WT,SS,FAT,EMA,IMF,Genomics Parent Verification: Sire: Verified, Dam: Not Verified
Notes: Sire Mystic was a massive volume Techno/ Trust son that we used as a yearling. Female line is renowned for longevity and fertility. Growthy, performance bull. Top 15% CWT, 10% 400, 600, Milk RBY, 5% SS. Market/ system suitability: F, EU, HGS, BB, W

Lot 21 YALGOO PICADOR Q181 (PP)

Ident: SODQ181 Born: 08/10/2019 Eye Pigment: 100/100

ALLENDAL YACKA (AI) (P)
ALLENDAL ANZAC E114 (PP)
ALLENDAL DAWN B22 (AI) (ET) (P)
Sire: YALGOO MOGUL N084 (AI) (PP)
YALGOO REVOLUTION G043 (AI) (P)
YALGOO BETTE J075 (P)
YALGOO BETTE G008 (P)

WIRRUNA DAFFY D1 (P)
WIRRUNA GAYLORD G152 (ET) (P)
WIRRUNA URSULA Z46 (AI) (S)
Dam: YALGOO VANESSA M235 (P)
YALGOO LEXICON F203 (P)
YALGOO VANESSA J066 (P)
YALGOO VANESSA B119 (AI) (P)

\$ Index Values
Southern Self Replacing: +\$179
Northern Self Replacing: +\$164
Southern Baldy Maternal: +\$165
Northern Baldy Terminal: +\$117

Purchaser:
.....
Price \$:

June 2021 Hereford BREEDPLAN																
CE (DIR)	CE (DTRS)	GL	BW	200	400	600	MCW	Milk	SS	DC	Cwt	EMA	Rib	RUMP	RBY%	IMF%
-0.1	-4.2	+0.0	+7.2	+44	+75	+102	+81	+17	+4.7	-5.7	+63	+4.9	+0.8	+1.1	+1.8	+0.0
41%	34%	58%	72%	66%	67%	70%	62%	53%	75%	38%	58%	48%	55%	59%	51%	56%

Traits Observed: CE,BWT,200WT(x2),400WT,600WT,SS,FAT,EMA,IMF,Genomics Parent Verification: Sire: Verified, Dam: Not Verified
Notes: Maternal brother to my pick of last year's sale Picador P025. P025 was used as a yearling and has left a cracking set of weaner's. Very similar type, with extra muscle, dimension, fat cover and quality. Very strong through the Rib eye area, also exhibiting extra width from hip to pin. Homozygous polled. Top 15% SSR and NSR indexes, 10% 200, 600, RBY, 5% 400 DC, 1% SS. Market/ system suitability: F, EU, HGS, BB, W

Lot 22 YALGOO MAFIOSO Q247 (PP)

Ident: SODQ247

Born: 19/11/2019

Eye Pigment: 100/100

STUDBROOK D'ARTAGNION V086 (AI) (ET) (S)
 OTAPAWA SPARK 3060 (IMP NZL) (AI) (ET) (P)
 OTAPAWA SPOT P30 (P)
 Sire: **TOBRUK LENNOX (ET) (PP)**
 MOUNT DIFFICULT FELLIS Y12 (AI) (P)
 PINE HILL MARITANA A619 (AI) (P)
 PINE HILL MARITANA W575 (AI) (P)
 GLENDAN PARK STORM W134 (H)
 BOWMONT STORM C093 (H)
 BOWMONT MARITANA W168 (AI) (H)
 Dam: **YALGOO BEAUTY H209 (AI) (P)**
 BENDULLA WINSTON (P)
 YALGOO BEAUTY Z183 (P)
 YALGOO BEAUTY U5 (P)

\$ Index Values

Southern Self Replacing: +\$136
 Northern Self Replacing: +\$114
 Southern Baldy Maternal: +\$121
 Northern Baldy Terminal: +\$87

Purchaser:

Price \$:

June 2021 Hereford BREEDPLAN

CE (DIR)	CE (DTRS)	GL	BW	200	400	600	MCW	Milk	SS	DC	Cwt	EMA	Rib	RUMP	RBY%	IMF%
-7.3	-0.3	+3.4	+7.7	+46	+76	+109	+108	+17	+1.9	-3.0	+66	+4.2	+1.3	+2.2	-0.1	+0.8
48%	41%	66%	71%	69%	69%	69%	64%	58%	67%	42%	61%	52%	57%	61%	53%	59%

Traits Observed: 200WT,400WT,600WT,SS,FAT,EMA,IMF,Genomics

Parent Verification: Sire: Verified, Dam: Not Tested

Notes: Performance bull by Lennox. Maternal brother to sire Mafioso M196. Homozygous Polled. Top 5% 200, 400, 600, 10% CWT, 15% Rump. Market/ system suitability: MSA, EU, HGS, BB

Lot 23 YALGOO PANAMA Q075 (AI) (PP)

Ident: SODQ075

Born: 21/09/2019

Eye Pigment: 100/100

ALLENDALE WATERHOUSE D1 (PP)
 DAYS ROBIN HOOD H38 (AI) (ET) (P)
 ALLENDALE FANCY U5 (AI) (P)
 Sire: **HUNTER LAKES LANCELOT L103 (AI) (ET) (PP)**
 SOUTH BUKALONG WALLACE 2 (P)
 HUNTER LAKES FANCY F7 (AI) (P)
 ALLENDALE FANCY D24 (AI) (P)
 BOWMONT STORM C093 (H)
 YALGOO BREAK OUT G075 (AI) (P)
 YALGOO BLUSH A036 (P)
 Dam: **YALGOO VANESSA M128 (P)**
 YALGOO ZODIAC G027 (AI) (P)
 YALGOO VANESSA J198 (P)
 YALGOO VANESSA G125 (P)

\$ Index Values

Southern Self Replacing: +\$214
 Northern Self Replacing: +\$203
 Southern Baldy Maternal: +\$205
 Northern Baldy Terminal: +\$144

Purchaser:

Price \$:

June 2021 Hereford BREEDPLAN

CE (DIR)	CE (DTRS)	GL	BW	200	400	600	MCW	Milk	SS	DC	Cwt	EMA	Rib	RUMP	RBY%	IMF%
-0.5	+1.6	+0.1	+7.3	+44	+78	+121	+107	+15	+4.2	-4.2	+76	+7.5	+0.8	+2.0	+2.5	+0.6
44%	36%	73%	73%	68%	68%	71%	62%	53%	75%	37%	59%	50%	56%	60%	51%	57%

Traits Observed: GL,CE,BWT,200WT(x2),400WT,600WT,SS,FAT,EMA,IMF,Genomics

Parent Verification: Sire: Verified, Dam: Not Verified

Notes: Homozygous star lot that is the highest indexing bull in the sale. Serious carcass bull with performance, style, mobility and sound structure. One of the very few bull's in the breed that does top 1% 600, SS and EMA (he is top 1% in 6 traits and indexes). What's important is that he does it with a sensible maturity pattern and good balance of fertility traits. Maternal brother sold to Scott Proud in last year's sale. Top 5% 200, 400 SBM and NBM indexes, 1% 600, SS, CWT, EMA, SSR and NSR indexes. Market/ system suitability: MSA, F, HGS, EU, BB, W

Lot 24 YALGOO PANCHO Q159 (PP)

Ident: SODQ159

Born: 03/10/2019

Eye Pigment: 100/100

KCF BENNETT 3008 M326 (P)
 NJW 73S M326 TRUST 100W ET (IMP USA) (ET) (P)
 NJW P606 72N DAYDREAM 73S (P)
 Sire: **YALGOO NICK N076 (AI) (P)**
 WIRRUNA GEELONG G171 (AI) (PP)
 YALGOO TIGRESS K124 (AI) (P)
 YALGOO TIGRESS D145 (AI) (P)
 REDGATE REDFORD D935 (AI) (P)
 INJEMIRA REDFORD AI J205 (AI) (P)
 INJEMIRA FIRST DAY G016 (P)
 Dam: **YALGOO BETTE M024 (P)**
 YALGOO VICEROY E316 (ET) (PP)
 YALGOO BETTE J284 (P)
 YALGOO BETTE E232 (P)

\$ Index Values

Southern Self Replacing: +\$179
 Northern Self Replacing: +\$161
 Southern Baldy Maternal: +\$173
 Northern Baldy Terminal: +\$122

Purchaser:

Price \$:

June 2021 Hereford BREEDPLAN

CE (DIR)	CE (DTRS)	GL	BW	200	400	600	MCW	Milk	SS	DC	Cwt	EMA	Rib	RUMP	RBY%	IMF%
-2.1	+2.9	+1.2	+7.4	+49	+72	+108	+85	+20	+2.3	-2.2	+66	+5.7	+1.2	+1.6	+1.1	+1.5
39%	31%	59%	71%	65%	66%	69%	61%	52%	73%	36%	56%	47%	54%	57%	49%	54%

Traits Observed: CE,BWT,200WT(x2),400WT,600WT,SS,FAT,EMA,IMF,Genomics

Parent Verification: Sire: Verified, Dam: Not Verified

Notes: Homozygous polled, performance grand son of Trust. Excels in the income traits of growth and carcass. Dam is a high volume, easy doing Redford daughter which an excellent udder. Top 15% NSR and SBM indexes, 10% Milk, IMF, SSR index, 5% 400, 600, CWT, 1% 200. Market/ system suitability: MSA, F, EU, HGS, BB, W

Lot 25 YALGOO NEON Q141 (PP)

Ident: SODQ141

Born: 30/09/2019

Eye Pigment: 100/100

KOANUI UNANIMOUS 0408 (P)
KOANUI TECHNO 3062 (IMP NZL) (PP)
KOANUI BLUSH 6455 (P)
Sire: **YALGOO MYSTIC N085 (AI) (S)**
NJW 73S M326 TRUST 100W ET (IMP USA) (ET) (P)
YALGOO DONNA BELLA K073 (AI) (P)
YALGOO DONNA BELLA D032 (P)

HEATHERDALE OPIUM U78 (AI) (P)
YALGOO REBEL H130 (AI) (P)
YALGOO RAINIE E129 (P)
Dam: **YALGOO VANESSA K020 (P)**
ALLENDALE WATERHOUSE D1 (PP)
YALGOO VANESSA H182 (AI) (P)
YALGOO VANESSA C118 (P)

\$ Index Values

Southern Self Replacing: +\$158
Northern Self Replacing: +\$144
Southern Baldy Maternal: +\$160
Northern Baldy Terminal: +\$116

Purchaser:

Price \$:

June 2021 Hereford BREEDPLAN																
CE (DIR)	CE (DTRS)	GL	BW	200	400	600	MCW	Milk	SS	DC	Cwt	EMA	Rib	RUMP	RBY%	IMF%
+0.0	+1.8	+0.6	+5.7	+45	+70	+98	+81	+20	+1.4	-1.7	+71	+5.1	+0.4	+0.6	+1.9	+0.2
38%	31%	57%	70%	64%	64%	68%	60%	52%	72%	35%	55%	45%	52%	56%	48%	53%

Traits Observed: CE,BWT,200WT(x2),400WT,600WT,SS,FAT,EMA,IMF,Genomics

Parent Verification: Sire: Verified, Dam: Not Verified

Notes: Long, dark Techno grand son with plenty of growth. Terrific pedigree filled with lot's of the breed's influential sires for carcass and growth. Trust, Techno, Waterhouse and Opium to mention a few. Dam is an attractive, soft female with plenty of volume and a good udder. Top 15% Milk, EMA, 10% 400, 600, 5% 200 CWT, RBY. Market/ system suitability: F, EU, HGS, W

Lot 26 YALGOO QUELL Q020 (AI) (P)

Ident: SODQ020

Born: 04/09/2019

Eye Pigment: 100/100

SHF WONDER M326 W18 ET (P)
NJW 73S W18 HOMETOWN 10Y (IMP USA) (P)
NJW P606 72N DAYDREAM 73S (P)
Sire: **NJW 135U 10Y HOMETOWN 27A (IMP USA) (P)**
THM DURANGO 4037 (P)
NJW 4037 34S DURANGO VACA 135U (P)
NJW P606 80L DAYDREAM 34S ET (H#)

KOANUI UNANIMOUS 0408 (P)
KOANUI TECHNO 3062 (IMP NZL) (PP)
KOANUI BLUSH 6455 (P)
Dam: **YALGOO ZELDA N115 (AI) (P)**
HILLS-GALORE HUMMER 118M (IMP CAN) (P)
YALGOO ZELDA D085 (AI) (TW) (P)
YALGOO ZELDA Y010 (P)

\$ Index Values

Southern Self Replacing: +\$150
Northern Self Replacing: +\$129
Southern Baldy Maternal: +\$149
Northern Baldy Terminal: +\$107

Purchaser:

Price \$:

June 2021 Hereford BREEDPLAN																
CE (DIR)	CE (DTRS)	GL	BW	200	400	600	MCW	Milk	SS	DC	Cwt	EMA	Rib	RUMP	RBY%	IMF%
+1.1	+1.8	-0.1	+5.4	+37	+60	+92	+82	+22	+4.3	-4.3	+56	+4.3	+0.1	-0.9	+1.8	+0.1
40%	32%	74%	71%	66%	66%	68%	61%	51%	72%	35%	57%	47%	53%	57%	48%	54%

Traits Observed: GL,CE,BWT,200WT(x2),400WT,600WT,SS,FAT,EMA,IMF,Genomics

Parent Verification: Sire: Verified, Dam: Not Tested

Notes: Outcross, muscle bull that goes back to D085 who was a Hill Galore Hummer female that throws serious visual carcass. I've always admired the phenotype of this bloke pulling together the growth of Techno and muscle of NJW27A. 27A was the 'keeper' bull from NJW 10Y for the Ward family. NJW 10Y was used in over 800 herds in the US with well over 5000 progeny recorded. 27A was used in over 170 herds and nearly 1000 progeny recorded. Needless to say both are very influential and popular US bulls. Easy to see why, with both the bulls and females being easy calving, thick, moderate and profitable cattle. This is the only chance to purchase a 27A son this year in the country. Top 15% Milk, 5% RBY, 1% SS. Market/ system suitability: SM, F, EU, HGS, W

Lot 27 YALGOO Q113 (HPR) (P)

Ident: SODQ113

Born: 26/09/2019

Eye Pigment: 100/100

KCF BENNETT 3008 M326 (P)
NJW 73S M326 TRUST 100W ET (IMP USA) (ET) (P)
NJW P606 72N DAYDREAM 73S (P)
Sire: **YALGOO NICK N076 (AI) (P)**
WIRRUNA GEELONG G171 (AI) (PP)
YALGOO TIGRESS K124 (AI) (P)
YALGOO TIGRESS D145 (AI) (P)

HARVIE LADIES MAN 4L (IMP CAN) (PP)
EBBX BOLLINGER (AI) (ET) (P)
DOONBIDDIE Q42 IRISH ROSE U57 (P)
Dam: **YALGOO G407 (HPR) (P)**
MARKOWEN INTRUDER (PP)
YALGOO D303 (HPR) (P)
YALGOO W303 (HPR) (P)

\$ Index Values

Southern Self Replacing: +\$127
Northern Self Replacing: +\$114
Southern Baldy Maternal: +\$128
Northern Baldy Terminal: +\$96

Purchaser:

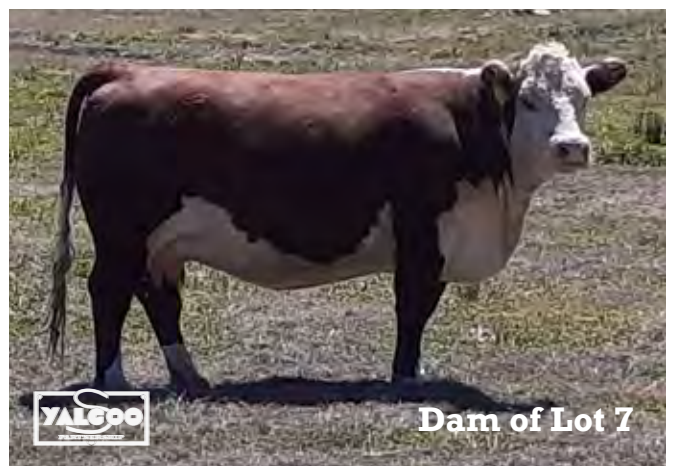
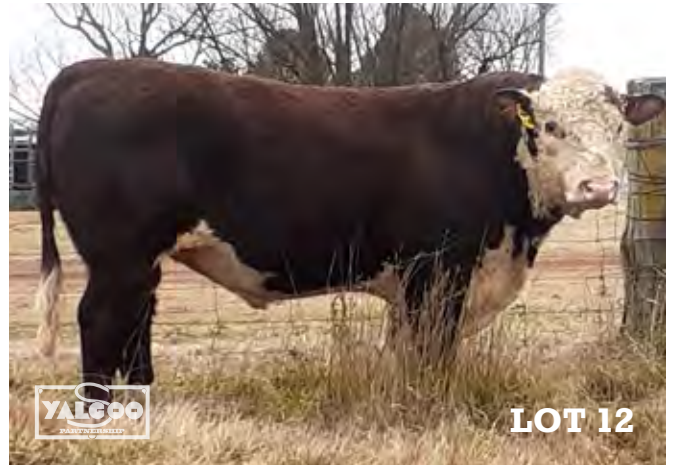
Price \$:

June 2021 Hereford BREEDPLAN																
CE (DIR)	CE (DTRS)	GL	BW	200	400	600	MCW	Milk	SS	DC	Cwt	EMA	Rib	RUMP	RBY%	IMF%
+0.2	+1.2	+0.1	+4.0	+33	+54	+75	+63	+21	+0.8	-2.3	+48	+5.1	+0.7	+0.6	+1.5	+0.9
41%	33%	54%	72%	66%	66%	69%	61%	53%	73%	38%	56%	47%	53%	57%	50%	53%

Traits Observed: CE,BWT,200WT(x2),400WT,600WT,SS,FAT,EMA,IMF,Genomics

Parent Verification: Sire: Verified, Dam: Not Verified

Notes: Soft herd bull showing plenty of roundness to his rump, with good fat cover. Dam is one of the easiest doing cows in the herd, through the drought she was always half a condition score higher than her mates. Top 15% EMA, Milk. Market/ system suitability: SM, MSA, F, BB



Lot 28 YALGOO QUAKER Q248 (P)

Ident: SODQ248 Born: 22/09/2019 Eye Pigment: 100/100

ALLENDAL WATERHOUSE D1 (PP)
DAYS ROBIN HOOD H38 (AI) (ET) (PP)
ALLENDAL FANCY U5 (AI) (P)
Sire: HUNTER LAKES LANCELOT L103 (AI) (ET) (PP)
SOUTH BUKALONG WALLACE 2 (P)
HUNTER LAKES FANCY F7 (AI) (P)
ALLENDAL FANCY D24 (AI) (P)

KCF BENNETT 3008 M326 (P)
SHF RIB EYE M326 R117 (IMP USA) (P)
HVH MISS HUDSON 83K 8M (P)
Dam: YALGOO BLUSH M114 (AI) (ET) (P)
YALGOO ZED F190 (P)
YALGOO BLUSH J137 (P)
YALGOO BLUSH A036 (P)

\$ Index Values
Southern Self Replacing: +\$128
Northern Self Replacing: +\$122
Southern Baldy Maternal: +\$138
Northern Baldy Terminal: +\$100

Purchaser:
.....
Price \$:

June 2021 Hereford BREEDPLAN																
CE (DIR)	CE (DTRS)	GL	BW	200	400	600	MCW	Milk	SS	DC	Cwt	EMA	Rib	RUMP	RBY%	IMF%
+3.9	+4.9	-2.4	+2.9	+34	+48	+63	+41	+19	+0.9	-1.6	+41	+4.4	+0.8	+1.8	+0.7	+1.1
43%	35%	62%	72%	67%	67%	70%	61%	54%	75%	36%	58%	49%	55%	58%	50%	55%

Traits Observed: CE,BWT,200WT(x2),400WT,600WT,SS,FAT,EMA,IMF,Genomics Parent Verification: Sire: Verified, Dam: Not Verified
Notes: Thick, heavy hind quartered heifer bull with outstanding structural scores. Market/ system suitability: SM, F, BB, HB

Lot 29 YALGOO MATADOR Q041 (AI) (TW) (P)

Ident: SODQ041 Born: 14/09/2019 Eye Pigment: 100/100

ALLENDAL YACKA (AI) (P)
ALLENDAL ANZAC E114 (PP)
ALLENDAL DAWN B22 (AI) (ET) (P)
Sire: WIRRUNA MATTY M288 (AI) (ET) (PP)
ELITE 4110 E212 (AI) (PP)
WIRRUNA CIRCLE H13 (AI) (PP)
WIRRUNA CIRCLE F31 (AI) (PP)

PINE HILL GOLIATH A615 (AI) (S)
YALGOO ZED F190 (P)
YALGOO ZELDA Y109 (P)
Dam: YALGOO BLUSH J137 (P)
BENDULLA WINSTON (P)
YALGOO BLUSH A036 (P)
YALGOO BLUSH S8 (P)

\$ Index Values
Southern Self Replacing: +\$133
Northern Self Replacing: +\$122
Southern Baldy Maternal: +\$134
Northern Baldy Terminal: +\$98

Purchaser:
.....
Price \$:

June 2021 Hereford BREEDPLAN																
CE (DIR)	CE (DTRS)	GL	BW	200	400	600	MCW	Milk	SS	DC	Cwt	EMA	Rib	RUMP	RBY%	IMF%
+1.6	-0.7	-2.9	+4.6	+30	+48	+69	+43	+15	+1.4	-1.7	+39	+3.2	+2.6	+3.8	-0.7	+2.5
53%	43%	66%	72%	70%	70%	71%	64%	60%	69%	44%	65%	56%	62%	64%	56%	63%

Traits Observed: BWT,200WT(x2),400WT,600WT,SS,FAT,EMA,IMF,Genomics Parent Verification: Sire: Not Verified, Dam: Verified
Notes: First of two quality twins, with good structure and extreme IMF. His dam was one of the high performing female's in her drop and a really attractive daughter of our prolific donor cow A036. Both bull's are suited to producing cattle for high spec marbling grids and MSA compliance markets. Top 10% GL, 1% FATS and IMF. Market/ system suitability: MSA, BB, F

Lot 30 YALGOO MATADOR Q040 (AI) (TW) (PP)

Ident: SODQ040 Born: 14/09/2019 Eye Pigment: 100/100

ALLENDAL YACKA (AI) (P)
ALLENDAL ANZAC E114 (PP)
ALLENDAL DAWN B22 (AI) (ET) (P)
Sire: WIRRUNA MATTY M288 (AI) (ET) (PP)
ELITE 4110 E212 (AI) (PP)
WIRRUNA CIRCLE H13 (AI) (PP)
WIRRUNA CIRCLE F31 (AI) (PP)

PINE HILL GOLIATH A615 (AI) (S)
YALGOO ZED F190 (P)
YALGOO ZELDA Y109 (P)
Dam: YALGOO BLUSH J137 (P)
BENDULLA WINSTON (P)
YALGOO BLUSH A036 (P)
YALGOO BLUSH S8 (P)

\$ Index Values
Southern Self Replacing: +\$147
Northern Self Replacing: +\$135
Southern Baldy Maternal: +\$148
Northern Baldy Terminal: +\$111

Purchaser:
.....
Price \$:

June 2021 Hereford BREEDPLAN																
CE (DIR)	CE (DTRS)	GL	BW	200	400	600	MCW	Milk	SS	DC	Cwt	EMA	Rib	RUMP	RBY%	IMF%
-0.8	-1.3	-6.1	+7.0	+43	+68	+95	+80	+12	+1.9	-0.2	+58	+4.3	+1.4	+2.1	+0.4	+1.6
53%	43%	66%	72%	70%	70%	71%	64%	59%	69%	43%	64%	55%	61%	64%	55%	62%

Traits Observed: BWT,200WT,400WT,600WT,SS,FAT,EMA,IMF,Genomics Parent Verification: Sire: Verified, Dam: Verified
Notes: The Steve Waugh of the twins A tad more prolific in his data. His dam raised both twins through to weaning in the worst year on record. Top 5% GL, Rib, Rump, 1% IMF. Market/ system suitability: MSA, BB, F

Lot 31 YALGOO Q060 (HPR) (PP)

Ident: SODQ060

Born: 18/09/2019

Eye Pigment: 100/100

SOUTH BUKALONG WALLACE 2 (P)
 GLENTREVOR WALLACE H427 (AI) (PP)
 GLENTREVOR MARITANA F240 (P)
 Sire: **YALGOO NEVADA N011 (AI) (P)**
 NJW 73S M326 TRUST 100W ET (IMP USA) (ET) (P)
 YALGOO DONNA BELLA L032 (AI) (P)
 YALGOO DONNA BELLA G185 (P)

BOWMONT STORM C093 (H)
 YALGOO BREAK OUT G075 (AI) (P)
 YALGOO BLUSH A036 (P)
 Dam: **YALGOO N424 (HPR) (P)**
 VALMA MAXIMUS (AI) (P)
 YALGOO E314 (HPR) (P)
 YALGOO Z358 (HPR) (P)

\$ Index Values

Southern Self Replacing: +\$156
 Northern Self Replacing: +\$142
 Southern Baldy Maternal: +\$172
 Northern Baldy Terminal: +\$128

Purchaser:

Price \$:

June 2021 Hereford BREEDPLAN

CE (DIR)	CE (DTRS)	GL	BW	200	400	600	MCW	Milk	SS	DC	Cwt	EMA	Rib	RUMP	RBY%	IMF%
+7.8	+5.3	-1.6	+4.9	+34	+59	+82	+72	+16	+2.0	-3.0	+52	+4.6	+0.2	+0.3	+0.9	+0.9
39%	31%	55%	70%	64%	64%	66%	57%	49%	71%	34%	54%	44%	50%	54%	46%	51%

Traits Observed: CE,BWT,200WT(x2),400WT,600WT,SS,FAT,EMA,IMF,Genomics

Parent Verification: Sire: Not Tested, Dam: Not Tested

Notes: Sound, well muscled bull with balanced data. Heifer's first calf. Homozygous Polled. Top 15% CED, CEDRTs, NBM index. Market/ system suitability: SM, MSA, F, BB, MP

Lot 32 YALGOO NETWORK Q136 (P)

Ident: SODQ136

Born: 29/09/2019

Eye Pigment: 100/100

ALLEDALE YACKA (AI) (P)
 ALLEDALE ANZAC E114 (PP)
 ALLEDALE DAWN B22 (AI) (ET) (P)
 Sire: **YALGOO MOGUL N084 (AI) (PP)**
 YALGOO REVOLUTION G043 (AI) (P)
 YALGOO BETTE J075 (P)
 YALGOO BETTE G008 (P)

SHF WONDER M326 W18 ET (P)
 NJW 73S W18 HOMEGROWN 8Y (IMP USA) (PP)
 NJW P606 72N DAYDREAM 73S (P)
 Dam: **YALGOO BETTE K018 (AI) (P)**
 PINE HILL GOLIATH A615 (AI) (S)
 YALGOO BETTE E235 (P)
 YALGOO BETTE Z247 (P)

\$ Index Values

Southern Self Replacing: +\$139
 Northern Self Replacing: +\$138
 Southern Baldy Maternal: +\$155
 Northern Baldy Terminal: +\$114

Purchaser:

Price \$:

June 2021 Hereford BREEDPLAN

CE (DIR)	CE (DTRS)	GL	BW	200	400	600	MCW	Milk	SS	DC	Cwt	EMA	Rib	RUMP	RBY%	IMF%
+6.8	+3.5	-2.4	+2.3	+32	+53	+66	+45	+17	+2.7	-1.5	+46	+6.1	+0.4	+0.2	+2.3	-0.1
40%	32%	59%	70%	65%	65%	68%	60%	52%	72%	35%	56%	46%	53%	56%	49%	53%

Traits Observed: CE,BWT,200WT(x2),400WT,600WT,SS,FAT,EMA,IMF,Genomics

Parent Verification: Sire: Verified, Dam: Not Verified

Notes: Moderate, thick, sound and efficient. Just like his sire and dam. A heifer bull that should produce live calves at a low cost, ideal for the supermarkets. Top 15% SS, 5% EMA, RBY. Market/ system suitability: SM, HB

Lot 33 YALGOO QUARRY Q079 (AI) (PP)

Ident: SODQ079

Born: 21/09/2019

Eye Pigment: 100/100

SCHU-LAR ON TARGET 22S (IMP USA) (ET) (P)
 KCF BENNETT ENCORE Z311 (ET) (PP)
 KCF MISS REVOLUTION X338 (ET) (P)
 Sire: **NJW 79Z Z311 ENDURE 173D (IMP USA) (ET) (PP)**
 NJW 73S M326 TRUST 100W ET (IMP USA) (ET) (P)
 BW 91H 100W RITA 79Z (ET) (P)
 REMITALL RITA 91H (P)

CAPETHORNE HOT SHOT 03 22 (P)
 MATARIKI HOLY - SMOKE (IMP NZL) (P)
 MATARIKI GIRLIE 00323 (P)
 Dam: **YALGOO ZELDA M225 (AI) (P)**
 YAVENVALE CONFESSION C084 (S)
 YALGOO ZELDA G029 (P)
 YALGOO ZELDA Y010 (P)

\$ Index Values

Southern Self Replacing: +\$188
 Northern Self Replacing: +\$169
 Southern Baldy Maternal: +\$180
 Northern Baldy Terminal: +\$129

Purchaser:

Price \$:

June 2021 Hereford BREEDPLAN

CE (DIR)	CE (DTRS)	GL	BW	200	400	600	MCW	Milk	SS	DC	Cwt	EMA	Rib	RUMP	RBY%	IMF%
-2.7	+0.1	+1.4	+6.5	+51	+84	+118	+99	+21	+2.5	-3.2	+75	+6.4	+1.3	+1.2	+1.5	+0.9
47%	35%	75%	72%	68%	67%	68%	63%	56%	65%	39%	60%	52%	57%	60%	52%	58%

Traits Observed: GL,CE,BWT,200WT(x2),400WT,600WT,SS,FAT,EMA,IMF,Genomics

Parent Verification: Sire: Verified, Dam: Not Verified

Notes: Star lot homozygous, Endure son that was the pick of the drop as a calf. A powerhouse, with outstanding muscling, strong bone and sire quality. His dam is close to the highest performing cow in the herd and has produced three calves towards the top of the drop. Quarry will be the preferred Endure son for many and he will be a sire that will seriously stamp his progeny, with performance, quality and thickness. Top 15% IMF, NSR, SBM and NBM indexes, 10% SSR index, 5% 200, 400, 600 EMA, 1% CWT. Market/ system suitability: MSA, F, EU, HGS, BB, W

Lot 34 YALGOO NICK Q164 (AI) (P)

Ident: SODQ164 Born: 04/10/2019 Eye Pigment: 100/100

SCHU-LAR ON TARGET 22S (IMP USA) (ET) (P)
KCF BENNETT ENCORE Z311 (ET) (PP)
KCF MISS REVOLUTION X338 (ET) (P)
Sire: NJW 79Z Z311 ENDURE 173D (IMP USA) (ET) (PP)
NJW 73S M326 TRUST 100W ET (IMP USA) (ET) (P)
BW 91H 100W RITA 79Z (ET) (P)
REMITALL RITA 91H (P)

WIRRUNA DAFFY D1 (P)
WIRRUNA GEELONG G171 (AI) (PP)
WIRRUNA LAST DAY E163 (AI) (P)
Dam: YALGOO TIGRESS K124 (AI) (P)
DEBARRY EDEN (PP)
YALGOO TIGRESS D145 (AI) (P)
YALGOO TIGRESS Z241 (H#)

\$ Index Values
Southern Self Replacing: +\$192
Northern Self Replacing: +\$174
Southern Baldy Maternal: +\$180
Northern Baldy Terminal: +\$122

Purchaser:
.....
Price \$:

June 2021 Hereford BREEDPLAN																
CE (DIR)	CE (DTRS)	GL	BW	200	400	600	MCW	Milk	SS	DC	Cwt	EMA	Rib	RUMP	RBY%	IMF%
-1.4	+1.8	+6.4	+5.1	+44	+73	+100	+67	+22	+2.5	-4.4	+65	+7.0	+0.7	+0.1	+2.1	+1.2
47%	34%	76%	74%	70%	69%	71%	64%	58%	74%	39%	61%	53%	59%	61%	54%	60%

Traits Observed: GL,CE,BWT,200WT(x2),400WT,600WT,SS,FAT,EMA,IMF,Genomics Parent Verification: Sire: Verified, Dam: Not Verified
Notes: High growth and scanning, attractive Endure son. His dam is from our prolific Tigress cow family (same as lot 6) and has produced a stud sire. She always transmits extra length and growth. Strong attractive carcass bull. One of the rare bull's with yield (top 5%) and IMF (top 10%). Top 15% 400, 600, milk and NSR index, 10% IMF, SSR index, 5% EMA and RBY. Market/ system suitability: MSA, F, EU, HGS, BB, W

Lot 35 YALGOO MANHATTAN Q148 (AI) (P)

Ident: SODQ148 Born: 30/09/2019 Eye Pigment: 100/100

SHF WONDER M326 W18 ET (P)
NJW 73S W18 HOMEGROWN 8Y (IMP USA) (PP)
NJW P606 72N DAYDREAM 73S (P)
Sire: YALGOO MAFIOSO M196 (AI) (P)
BOWMONT STORM C093 (H)
YALGOO BEAUTY H209 (AI) (P)
YALGOO BEAUTY Z183 (P)

PINE HILL GOLIATH A615 (AI) (S)
YALGOO ZED F190 (P)
YALGOO ZELDA Y109 (P)
Dam: YALGOO RAINIE J270 (P)
PINE HILL GOLIATH A615 (AI) (S)
YALGOO RAINIE E129 (P)
YALGOO RAINIE Y093 (P)

\$ Index Values
Southern Self Replacing: +\$108
Northern Self Replacing: +\$87
Southern Baldy Maternal: +\$97
Northern Baldy Terminal: +\$74

Purchaser:
.....
Price \$:

June 2021 Hereford BREEDPLAN																
CE (DIR)	CE (DTRS)	GL	BW	200	400	600	MCW	Milk	SS	DC	Cwt	EMA	Rib	RUMP	RBY%	IMF%
-7.8	-5.3	+4.6	+6.7	+36	+60	+95	+86	+19	+2.8	-0.5	+56	+5.2	+1.5	+2.1	+0.3	+1.2
41%	33%	72%	73%	68%	68%	70%	62%	54%	73%	35%	58%	47%	54%	58%	50%	55%

Traits Observed: GL,CE,BWT,200WT(x2),400WT,600WT,SS,FAT,IMF,Genomics Parent Verification: Sire: Verified, Dam: Not Verified
Notes: Without doubt our best Mafioso in regards to phenotype. Well made, with plenty of carcass and quality. Has outcross sire claims, will add growth, improve carcass and comes from a moderate, picture perfect dam. Top 15% 600, EMA, IMF, 10% Rib, Rump. Market/ system suitability: MSA, F, EU, HGS, BB

Lot 36 YALGOO MULGA Q238 (P)

Ident: SODQ238 Born: 30/10/2019 Eye Pigment: 065/100

SHF WONDER M326 W18 ET (P)
NJW 73S W18 HOMEGROWN 8Y (IMP USA) (PP)
NJW P606 72N DAYDREAM 73S (P)
Sire: YALGOO MAFIOSO M196 (AI) (P)
BOWMONT STORM C093 (H)
YALGOO BEAUTY H209 (AI) (P)
YALGOO BEAUTY Z183 (P)

ALLENDALE VAGABOND A74 (AI) (P)
ALLENDALE WATERHOUSE D1 (PP)
ALLENDALE MARLINE X185 (P)
Dam: OOGLEY NETTIEPIE H68 (AI) (P)
YALGOO TEX X072 (P)
OOGLEY NETTIE PIE B012 (AI) (P)
OOGLEY NETTIE PIE U201 (P)

\$ Index Values
Southern Self Replacing: +\$145
Northern Self Replacing: +\$122
Southern Baldy Maternal: +\$160
Northern Baldy Terminal: +\$127

Purchaser:
.....
Price \$:

June 2021 Hereford BREEDPLAN																
CE (DIR)	CE (DTRS)	GL	BW	200	400	600	MCW	Milk	SS	DC	Cwt	EMA	Rib	RUMP	RBY%	IMF%
+1.6	+3.3	-0.3	+6.8	+45	+76	+112	+121	+24	+3.3	-1.5	+71	+5.3	+0.1	+0.2	+0.9	+0.3
41%	33%	62%	72%	67%	67%	69%	62%	55%	70%	37%	60%	50%	56%	60%	51%	57%

Traits Observed: CE,BWT,200WT(x2),400WT,600WT,SS,FAT,EMA,IMF,Genomics Parent Verification: Sire: Verified, Dam: Not Tested
Notes: Mulga is big, long and thick. Bull that is strong in the income producing traits and will breed cattle ideal for finishing at heavy weights on grass. Positive calving ease for such extreme growth is rare. Top 15% EMA, 10% Milk, SS, 5% 200, 400, 600, CWT. Market/ system suitability: F, HGS, BB

Lot 37 YALGOO PACIFIC Q106 (AI) (PP)

Ident: SODQ106

Born: 25/09/2019

Eye Pigment: 075/100

SCHU-LAR ON TARGET 22S (IMP USA) (ET) (P)
 KCF BENNETT ENCORE Z311 (ET) (PP)
 KCF MISS REVOLUTION X338 (ET) (P)
 Sire: **NJW 79Z Z311 ENDURE 173D (IMP USA) (ET) (PP)**
 NJW 73S M326 TRUST 100W ET (IMP USA) (ET) (P)
 BW 91H 100W RITA 79Z (ET) (P)
 REMITALL RITA 91H (P)

VALMA JAMBOREE Y41 (P)
 VALMA MAGNUM II (PP)
 VALMA ADVANCER'S BANKSIA S86 (P)
 Dam: **YALGOO VANESSA H258 (P)**
 STUDBROOK D'ARTAGNION V086 (AI) (ET) (S)
 YALGOO VANESSA E321 (ET) (P)
 YALGOO VANESSA T104 (P)

\$ Index Values

Southern Self Replacing: +\$176
 Northern Self Replacing: +\$169
 Southern Baldy Maternal: +\$172
 Northern Baldy Terminal: +\$119

Purchaser:

Price \$:

June 2021 Hereford BREEDPLAN

CE (DIR)	CE (DTRS)	GL	BW	200	400	600	MCW	Milk	SS	DC	Cwt	EMA	Rib	RUMP	RBY%	IMF%
+2.1	+5.1	+1.3	+1.8	+36	+67	+84	+62	+17	+2.8	-4.5	+61	+6.2	+1.4	+1.2	+1.5	+0.7
47%	34%	74%	73%	69%	68%	68%	63%	59%	66%	39%	60%	53%	58%	61%	53%	59%

Traits Observed: GL,CE,BWT,200WT,400WT,600WT,SS,FAT,EMA,IMF,Genomics

Parent Verification: Sire: Verified, Dam: Not Verified

Notes: Excellent, multi-purpose sire that was used as a yearling over heifers. Homozygous poll bull with exceptional fertility data. A unique balance of carcass data with high EMA and RBY coupled with strong fat and IMF. Pacific is well made with length and muscle and is a star lot. Top 15% CEDRTs, RBY and SSR index, 10% NSR index, 5% EMA. Market/ system suitability: SM, MSA, F, BB, MP

Lot 38 YALGOO NINJA Q115 (PP)

Ident: SODQ115

Born: 26/09/2019

Eye Pigment: 100/100

STUDBROOK D'ARTAGNION V086 (AI) (ET) (S)
 OTAPAWA SPARK 3060 (IMP NZL) (AI) (ET) (P)
 OTAPAWA SPOT P30 (P)
 Sire: **TOBRUK LENNOX (ET) (PP)**
 MOUNT DIFFICULT FELLIS Y12 (AI) (P)
 PINE HILL MARITANA A619 (AI) (P)
 PINE HILL MARITANA W575 (AI) (P)

KCF BENNETT 3008 M326 (P)
 NJW 73S M326 TRUST 100W ET (IMP USA) (ET) (P)
 NJW P606 72N DAYDREAM 73S (P)
 Dam: **YALGOO BETTE J209 (AI) (PP)**
 PINE HILL ERIK Y601 (AI) (S)
 YALGOO BETTE D240 (ET) (P)
 YALGOO BETTE T185 (P)

\$ Index Values

Southern Self Replacing: +\$215
 Northern Self Replacing: +\$187
 Southern Baldy Maternal: +\$200
 Northern Baldy Terminal: +\$138

Purchaser:

Price \$:

June 2021 Hereford BREEDPLAN

CE (DIR)	CE (DTRS)	GL	BW	200	400	600	MCW	Milk	SS	DC	Cwt	EMA	Rib	RUMP	RBY%	IMF%
-3.7	+3.2	+2.7	+7.5	+51	+91	+134	+115	+25	+3.9	-5.4	+82	+5.8	+1.8	+2.4	+0.5	+1.4
49%	42%	66%	74%	70%	69%	70%	64%	60%	67%	43%	61%	52%	58%	62%	54%	60%

Traits Observed: CE,BWT,200WT(x2),400WT,600WT,SS,FAT,EMA,IMF,Genomics

Parent Verification: Sire: Verified, Dam: Verified

Notes: Second highest indexing bull in the sale. A combination of two of our favoured animals on Yalgoo- Tobruk Lennox and donor dam J209. Homozygous polled, with extreme volume and performance. Top 15% Rib, Rump, 10% IMF, NBM index, 5% Milk, EMA, NSR and SBM indexes, 1% 200, 400, 600, CWT and SSR index. Market/ system suitability: SM, MSA, F, EU, HGS, BB, W

Lot 39 YALGOO QUICKSILVER Q025 (AI) (PP)

Ident: SODQ025

Born: 08/09/2019

Eye Pigment: 100/

EFBEEF FOREMOST U208 (IMP USA) (PP)
 EFBEEF TFL U208 TESTED X651 (P)
 EFBEEF P606 MABEL R415 (P)
 Sire: **EFBEEF BR VALIDATED B413 (IMP USA) (PP)**
 MSU TCF REVOLUTION 4R (IMP USA) (PP)
 EFBEEF 4R THYRA Y865 (P)
 EFBEEF N014 THYRA S645 (P)

ARDO HUSTLER 4110 (IMP NZL) (P)
 ELITE 4110 H297 (AI) (PP)
 ELITE FAVOURITE 0219 C133 (AI) (P)
 Dam: **YALGOO BLUSH N089 (AI) (ET) (P)**
 REMITALL ONLINE 122L (IMP CAN) (P)
 YALGOO BLUSH J102 (AI) (PP)
 YALGOO BLUSH D006 (P)

\$ Index Values

Southern Self Replacing: +\$167
 Northern Self Replacing: +\$163
 Southern Baldy Maternal: +\$171
 Northern Baldy Terminal: +\$120

Purchaser:

Price \$:

June 2021 Hereford BREEDPLAN

CE (DIR)	CE (DTRS)	GL	BW	200	400	600	MCW	Milk	SS	DC	Cwt	EMA	Rib	RUMP	RBY%	IMF%
+5.2	+3.8	-0.6	+1.0	+34	+52	+65	+25	+19	+1.8	-3.0	+47	+7.2	+2.1	+2.3	+0.8	+2.0
41%	29%	75%	73%	68%	68%	69%	63%	56%	71%	36%	60%	51%	57%	59%	51%	58%

Traits Observed: GL,CE,BWT,200WT(x2),400WT,600WT,SS,FAT,EMA,IMF,Genomics

Parent Verification: Sire: Verified, Dam: Not Tested

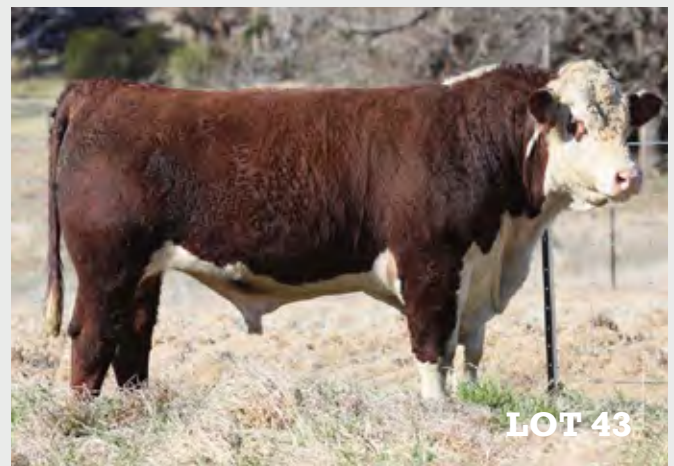
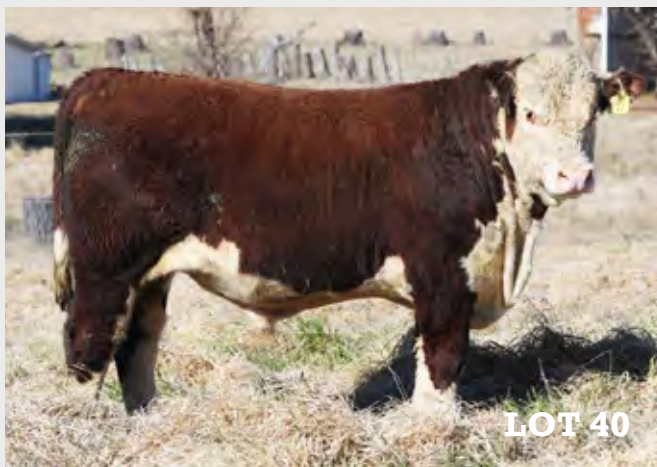
Notes: Homozygous polled Validated son used over stud heifers. Sire Validated is the undisputed carcass bull in the US being over 2 times breed average EMA and over 12 times breed average for IMF. NB: Will have to pass another jump test prior to sale. Top 15% Rib, Rump, 5% EMA, IMF. Market/ system suitability: SM, MSA, F, BB, HB



Ivybank Poll Hereford Stud was founded in 1975. Carcase and doing ability has always been at the forefront of our breeding The drought has really worked out the cattle that survive in our climate.

All bulls are 7 in 1 tested, free of pestiviris, Semen tested and have had no hoof trimming.

The bulls in this draft were weaned early and put on oats when they were very light. There condition now is a testament of their doing ability They have never been fed any grain.



Lot 40 IVY BANK RUPERT R001 (P)

Ident: AHGR001

Born: 20/03/2020

BOWEN TORNADO Z260 (AI) (ET) (PP)
KIDMAN BLIGH D99 (P)
KIDMAN CONSTANCE W109 (P)
Sire: **KANIMBLA FULL BOTTLE H117 (PP)**
GLENLEES 73J BOLD 300M (IMP CAN) (ET) (P)
KANIMBLA MARITANA B06 (AI) (P)
KANIMBLA MARITANA X13 (P)

WIRRUNA ABERCORN (AI) (P)
ALLENDAL YEMEN E39 (P)
ALLENDAL FANCY A158 (AI) (ET) (S)
Dam: **IVY BANK BETTINA L60 (P)**
BOBANKEN VIKING V88 (P)
IVY BANK BETTINA D28 (P)
IVY BANK BETTINA V26 (P)

\$ Index Values

Southern Self Replacing: +\$100
Northern Self Replacing: +\$96
Southern Baldy Maternal: +\$106
Northern Baldy Terminal: +\$80

Purchaser:

Price \$:

June 2021 Hereford BREEDPLAN																
CE (DIR)	CE (DTRS)	GL	BW	200	400	600	MCW	Milk	SS	DC	Cwt	EMA	Rib	RUMP	RBY%	IMF%
+4.5	+1.9	-0.6	+3.5	+22	+38	+54	+55	+8	+0.7	-3.0	+32	+3.4	+1.2	+2.0	+0.3	+0.4
40%	33%	44%	64%	59%	55%	55%	50%	50%	50%	30%	47%	38%	43%	47%	41%	44%

Traits Observed: BWT,200WT

Parent Verification: Sire: Not Tested, Dam: Not Tested

Notes: A yearling bull with a lot of quality. Low birthweight with punch and thickness

Lot 41 IVY BANK QUONOEY Q031 (P)

Ident: AHGQ031

Born: 10/10/2019

VALMA PRESTIGE E60 (P)
TYCOLAH LYNWOOD H184 (P)
TYCOLAH ASTERET A129 (P)
Sire: **TYCOLAH OAKDALE L31 (S)**
TYCOLAH INSPIRE E63 (S)
TYCOLAH ADVANCE G118 (H#)
TYCOLAH ADVANCE Z137 (AI) (ET) (P)

YALGOO BOULDER Y056 (S)
YALGOO BRUISER E106 (AI) (P)
YALGOO BEAUTY A103 (P)
Dam: **IVY BANK CHERRY J15 (P)**
IVY BANK DEDERANG D30 (P)
IVY BANK CHERRY F36 (P)
IVY BANK CHERRY C26 (AI) (P)

\$ Index Values

Southern Self Replacing: +\$100
Northern Self Replacing: +\$80
Southern Baldy Maternal: +\$93
Northern Baldy Terminal: +\$62

Purchaser:

Price \$:

June 2021 Hereford BREEDPLAN																
CE (DIR)	CE (DTRS)	GL	BW	200	400	600	MCW	Milk	SS	DC	Cwt	EMA	Rib	RUMP	RBY%	IMF%
-3.5	-0.3	-1.0	+6.6	+34	+52	+74	+60	+14	+2.0		+39	+2.8	+0.3	+0.3	+0.6	+0.2
38%	27%	40%	70%	63%	57%	59%	52%	44%	51%		46%	36%	42%	46%	39%	41%

Traits Observed: BWT,200WT

Parent Verification: Sire: Not Tested, Dam: Not Tested

Notes: A real powerhouse. A bull that shows muscle expression through out. A very well put together bull

Lot 42 IVY BANK QUEST Q019 (P)

Ident: AHGQ019

Born: 01/10/2019

KCF BENNETT 3008 M326 (P)
NJW 73S M326 TRUST 100W ET (IMP USA) (ET) (P)
NJW P606 72N DAYDREAM 73S (P)
Sire: **YALGOO JET J157 (AI) (P)**
SOUTH BUKALONG WALLACE 2 (P)
YALGOO DONNA BELLA D040 (AI) (P)
YALGOO DONNA BELLA W059 (P)

KIDMAN LEGACY D155 (S)
TUMMEL LEGACY J39 (P)
KIDMAN ADVANCE E70 (P)
Dam: **IVY BANK CHERRY M044 (P)**
ALLENDAL YEMEN E39 (P)
IVY BANK CHERRY J45 (P)
IVY BANK CHERRY E32 (P)

\$ Index Values

Southern Self Replacing: +\$139
Northern Self Replacing: +\$131
Southern Baldy Maternal: +\$142
Northern Baldy Terminal: +\$99

Purchaser:

Price \$:

June 2021 Hereford BREEDPLAN																
CE (DIR)	CE (DTRS)	GL	BW	200	400	600	MCW	Milk	SS	DC	Cwt	EMA	Rib	RUMP	RBY%	IMF%
+4.2	+4.0	+0.2	+3.2	+29	+46	+64	+43	+13	+2.3	-3.0	+40	+3.2	+0.9	+1.0	+0.8	+1.1
40%	31%	54%	70%	64%	59%	60%	53%	45%	56%	33%	55%	47%	52%	54%	45%	53%

Traits Observed: BWT,200WT

Parent Verification: Sire: Not Tested, Dam: Not Tested

Notes: A very low birthweight bull suitable for a heifer joining. Still has a lot of natural thickness and quality



Lot 43 IVY BANK QUO Q035 (P)

Ident: AHGQ035

Born: 16/10/2019

VALMA PRESTIGE E60 (P)
TYCOLAH LYNWOOD H184 (P)
TYCOLAH ASTERET A129 (P)
Sire: **TYCOLAH OAKDALE L31 (S)**
TYCOLAH INSPIRE E63 (S)
TYCOLAH ADVANCE G118 (H#)
TYCOLAH ADVANCE Z137 (AI) (ET) (P)

WIRRUNA ABERCORN (AI) (P)
ALLENDAL YEMEN E39 (P)
ALLENDAL FANCY A158 (AI) (ET) (S)
Dam: **IVY BANK MAGIC L09 (P)**
YALGOO BOOSTER B045 (AI) (P)
IVY BANK MAGIC F18 ET (AI) (ET) (P)
IVY BANK MAGIC Z09 (P)

\$ Index Values

Southern Self Replacing: +\$118
Northern Self Replacing: +\$98
Southern Baldy Maternal: +\$109
Northern Baldy Terminal: +\$74

Purchaser:

Price \$:

June 2021 Hereford BREEDPLAN																
CE (DIR)	CE (DTRS)	GL	BW	200	400	600	MCW	Milk	SS	DC	Cwt	EMA	Rib	RUMP	RBY%	IMF%
-3.4	+0.3	-1.0	+6.7	+35	+54	+82	+69	+15	+2.5	-2.0	+46	+3.4	+0.0	-0.1	+1.4	+0.0
40%	31%	44%	69%	63%	56%	57%	49%	44%	54%	27%	45%	37%	41%	45%	39%	42%

Traits Observed: BWT,200WT

Parent Verification: Sire: Not Tested, Dam: Not Tested

Notes: Thick as a brick would best describe this bull. A beautiful butt shape with a nice dark colour and great temperament

Lot 44 IVY BANK QUENTIN Q010 (P)

Ident: AHGQ010

Born: 22/09/2019

BOWEN TORNADO Z260 (AI) (ET) (PP)
KIDMAN BLIGH D99 (P)
KIDMAN CONSTANCE W109 (P)
Sire: **KANIMBLA FULL BOTTLE H117 (PP)**
GLENLEES 73J BOLD 300M (IMP CAN) (ET) (P)
KANIMBLA MARITANA B06 (AI) (P)
KANIMBLA MARITANA X13 (P)

WIRRUNA ABERCORN (AI) (P)
ALLENDAL YEMEN E39 (P)
ALLENDAL FANCY A158 (AI) (ET) (S)
Dam: **IVY BANK MINERVA J31 (P)**
YARAWA SOUTH COOPER C114 (AI) (P)
IVY BANK MINERVA G30 (P)
IVY BANK MINERVA A32 (P)

\$ Index Values

Southern Self Replacing: +\$81
Northern Self Replacing: +\$71
Southern Baldy Maternal: +\$85
Northern Baldy Terminal: +\$68

Purchaser:

Price \$:

June 2021 Hereford BREEDPLAN																
CE (DIR)	CE (DTRS)	GL	BW	200	400	600	MCW	Milk	SS	DC	Cwt	EMA	Rib	RUMP	RBY%	IMF%
+1.1	+0.9	-0.5	+4.6	+25	+42	+59	+69	+9	+0.9	-1.6	+33	+3.0	+0.0	-0.1	+1.0	+0.0
41%	33%	46%	70%	64%	58%	59%	54%	51%	51%	30%	48%	38%	44%	47%	41%	44%

Traits Observed: BWT,200WT

Parent Verification: Sire: Not Tested, Dam: Not Tested

Notes: A big upstanding bull that will do a good job for all markets. Medium birthweight, good pigment and huge amount of depth

Lot 45 IVY BANK QUEBEC Q030 (P)

Ident: AHGQ030

Born: 08/10/2019

KCF BENNETT 3008 M326 (P)
NJW 73S M326 TRUST 100W ET (IMP USA) (ET) (P)
NJW P606 72N DAYDREAM 73S (P)
Sire: **YALGOO JET J157 (AI) (P)**
SOUTH BUKALONG WALLACE 2 (P)
YALGOO DONNA BELLA D040 (AI) (P)
YALGOO DONNA BELLA W059 (P)

KIDMAN BLIGH D99 (P)
KANIMBLA FULL BOTTLE H117 (PP)
KANIMBLA MARITANA B06 (AI) (P)
Dam: **IVY BANK CHERRY M006 (P)**
IVY BANK CLAUDE (P)
IVY BANK CHERRY E30 (P)
IVY BANK CHERRY A26 (AI) (P)

\$ Index Values

Southern Self Replacing: +\$151
Northern Self Replacing: +\$138
Southern Baldy Maternal: +\$154
Northern Baldy Terminal: +\$112

Purchaser:

Price \$:

June 2021 Hereford BREEDPLAN																
CE (DIR)	CE (DTRS)	GL	BW	200	400	600	MCW	Milk	SS	DC	Cwt	EMA	Rib	RUMP	RBY%	IMF%
+2.6	+3.5	+0.1	+4.5	+36	+59	+82	+68	+16	+2.6	-2.9	+52	+3.6	+0.8	+1.0	+0.8	+1.3
41%	32%	54%	70%	64%	59%	60%	53%	47%	56%	34%	55%	47%	52%	54%	45%	53%

Traits Observed: BWT,200WT

Parent Verification: Sire: Not Tested, Dam: Not Tested

Notes: A Jet son that is a very high indexing bull. Medium birthweight, great IMF and will suit all markets



LIVESTOCK AUCTION TERMS AND CONDITIONS OF SALE

CHAPTER ONE - PRELIMINARY

1. (a) A vendor is bound by these terms and conditions by offering livestock for sale by auction.
(b) An agent (which includes an auctioneer) is bound by these terms and conditions by conducting an auction sale.
(c) A buyer is bound by these terms and conditions by bidding at auction.
2. In these terms the expression auctioneer, agent, buyer and vendor respectively includes the servants, contractors, agents of each of them. The auctioneer, agent, buyer and vendor shall be wholly responsible for the acts and omissions of their respective servants, contractors and agents. The term 'auctioneer' includes, so far as the law and context permits, the vendor's agent.
(b) When used in these terms the expressions 'companion animals' means all animals originating from a property on a particular day.
Where lots are split and sent to multiple establishments, then all of these animals shall be regarded as companions.
3. The following applies in interpreting these terms and conditions:
(a) The following words have the following meanings:
Fees means all levies, charges, fees, costs and other expenses incurred or relating to these terms and conditions and the sale and purchase of livestock including, without limitation, transaction levies, yard and weigh dues, cartage, advertising and rebates, and whether paid for, or incurred, by the agent; Livestock means animals auctioned pursuant to these terms and conditions; and Price means the amount at which the lot has been sold to the buyer referred to in clause 7 of these terms and conditions
(i) plus any Fees and other expenses incurred in relation to the purchase of livestock that are payable by the buyer; and
(ii) plus any GST added in accordance with clause 12.
(b) These terms and conditions are subject to legislation or regulation in the State in which the auction is conducted and in the event of any conflict then the legislation or regulation will prevail. The provisions of these terms and conditions are in addition to, and do not derogate from, the duties and rights of vendors, agents and buyers set out in legislation and regulation in the State in which the auction is conducted.

CHAPTER TWO - STANDARD TERMS OF SALE

4. Subject to any reserve price, and to the right, prior to the fall of the hammer, of the vendor to withdraw any lot without declaring the reserve, the highest bidder shall be the buyer.
5. The auctioneer has the right to bid on behalf of the vendor provided that right is notified prior to the commencement of the sale and is subject to State law.
6. A bid cannot be made or accepted after the fall of the hammer unless, in accordance with clause 8, the auctioneer decides to put the lot up again.
7. The last price called by the auctioneer at the fall of the hammer shall be the amount at which the lot has been sold.
8. In the event of a disputed bid, the auctioneer is the sole arbitrator of the successful bidder or the auctioneer may decide to put the lot up again. The auctioneer's decision is final.
9. The auctioneer may refuse to accept any bid which, in the auctioneer's opinion, is not in the best interests of the vendor and need not give reasons for doing so. The minimum bid for livestock selling is 0.2 of a cent (\$0.002).
10. A bidder shall be deemed to be a principal unless, prior to bidding, the bidder has given to the auctioneer a copy of written authority to bid for or on behalf of another person.
11. The successful bidder at a livestock auction sale must give to the auctioneer at the fall of the hammer:
(a) the purchaser's name; or
(b) the bid card number which identifies the purchaser; or
(c) the name of the person on whose behalf the successful bid was made; and (d) the Property Identification Code (known as the 'PIC') of destination.
12. The auction shall be conducted on the basis that the bid price shall be exclusive of Goods and Services Tax (GST). GST shall be added after the fall of the hammer for those sales subject to GST.
13. As soon as practicable after the fall of the hammer, the buyer shall if requested by the agent, sign the agreement for sale.
14. If a buyer does not comply with any of these terms and conditions, which includes the requirements of State law, any livestock knocked down to that buyer may be re-sold by public auction or private contract in whatever lots and manner the auctioneer decides. The re-sale may be with or without notice and shall be at the buyer's risk. The buyer is responsible for all loss and expense arising out of a re-sale and is not entitled to any resulting profit.
15. The buyer of livestock must pay the agent the full amount of the purchase price in immediate funds on receipt of a tax invoice. Payment is required prior to delivery unless some other time for payment is specified in a written agreement between the buyer and the auctioneer that was made before the fall of the hammer.
16. No person may bid unless, prior to the commencement of the sale, that person has made arrangements satisfactory to the auctioneer for payment for livestock purchased. If bids in breach of this condition are inadvertently accepted, delivery shall not be given until the purchase money is paid and any law, rule or practice to the contrary is accordingly negated as far as possible.
17. (a) Cattle sold on a liveweight basis that are weighed pre-sale are at the risk and expense of the buyer upon the fall of the hammer.
(b) Cattle sold on a liveweight basis that are weighed post-sale are at the risk and expense of the buyer immediately after weighing.
(c) All livestock other than cattle sold on a liveweight basis are at the risk and expense of the buyer upon the fall of the hammer.
18. (a) Subject to this clause the sale is complete on the fall of the hammer.
(b) The time for rejection is the time commencing at the fall of the hammer and ending at the first of:
(i) delivery is taken by a representative of the buyer;
(ii) departure of the animal from the purchaser's delivery pen; or
(iii) one hour after the last animal is:
a. in the case of pre-sale weighing, sold; or
b. in the case of post-sale weighing, weighed.
(c) During the time for rejection the buyer may reject any animal which is lame, blind or diseased where that condition existed prior to the fall of the hammer but could not be reasonably observed when the animal was in the selling pen.
(d) If the purchaser rejects an animal during the time for rejection then the sale of that animal is cancelled and the animal is returned to the vendor or sold at such price as the purchaser and the agent may agree.
(e) This sub-clause applies only to cattle which are sold in Queensland at auction for slaughter. The agent has responsibility for the prevention of loss or escape (but not death, sickness or injury) of those cattle from the time of the fall of the hammer, through delivery to and from the scales, to the buyer's delivery pen and on to the buyer's nominated transport. This responsibility ends at the earlier of those cattle boarding the buyer's nominated transport or sunset on the day after the sale. This sub-clause does not apply if the agent makes an announcement to that effect prior to sale.
19. (a) Subject to the right of rejection in Clause 18, all conditions and warranties expressed or implied by law are hereby excluded from the sale to the extent that the law allows. All lots are open for inspection prior to the commencement of the sale and are sold with all faults, if any. No compensation shall be given for any faults, imperfections, errors of description, number in or of any lots sold or otherwise.
(b) Any claim or objection arising out of an error or misdescription in the provision of relevant information in terms of legislation or regulation concerning the National Livestock Identification Scheme (NLIS) must be made by 5:00pm on the seventh day after the fall of the hammer. No objection, requisition or claim against the vendor or agent in respect of such error or misdescription can be made after that time.
(c) Any statements made by the vendor or the auctioneer whether in writing or orally to the effect that any female has been pregnancy tested or scanned positive shall mean and require only that a certificate in writing shall be supplied to the buyer signed by a qualified veterinary surgeon or certified scanner certifying that the said female has been tested or scanned on the date specified in the certificate and that in the opinion of the surgeon or scanner the female was pregnant on that date.
(d) For cattle, the agent undertakes to make every reasonable effort to ensure that any NLIS cattle device number is transferred from the saleyard account to the purchasers account on the NLIS database no later than midnight on the day of the sale.
(e) Where livestock have a food safety or market eligibility status derived from the NVD and/or the NLIS/ERP database, the agent will inform the buyers by presale catalogue in conjunction with vendor branding and/or announce the status prior to the offering of those lots.
20. If delivery is made to, or possession obtained by, the buyer or its representative before full payment of the Price, then until full payment is received, the buyer:
(a) does not acquire title to the livestock;
(b) holds the livestock as bailee only for the vendor;
(c) must act in a fiduciary capacity in its relationship with the vendor;
(d) must store the stock separately or so that they are readily distinguishable from other livestock owned by the buyer;
(e) is responsible for the safety and well being of the livestock;
(f) may make a bona fide sale for market value of any or all of the livestock. As between the buyer and the subsequent buyer, the sale shall be made by the buyer in its own name and not as agent for the vendor, however as between the vendor and buyer, the sale shall be made as bailee and agent for the vendor; and
(g) must keep and account for the proceeds of any subsequent sale separately from its other money and hold those proceeds, together with the benefits of any rights against subsequent buyers, on trust for the vendor.
21. In addition to clause 20, if payment is not made according to clause 15, but delivery has been made to, or possession obtained by, the buyer or its representative:
(a) The vendor or its agent may repossess and resell the livestock and enter property owned or occupied by the buyer or its representative if necessary to do so; and
(b) Interest may be charged at the rate usually charged by the agent for overdue accounts on any amounts which remain owing at any time.
22. The buyer may not make any claim against the vendor for actions by the vendor or its agent under clauses 20 or 21 and indemnifies the vendor and its agent against any loss, damage, costs, expenses, penalties, fines or claims suffered by the vendor, the agent or any person or entity arising from the vendor exercising its rights under clauses 20 or 21.
- 23.1. Clause 23 applies whenever the agent pays the vendor before being paid by the buyer, which the agent is not bound to do. The agent is then the del credere agent of the vendor at law.
- 23.2. The vendor hereby gives notice to the buyer of the assignments referred to in clause 23.3.
- 23.3. When this clause applies, in addition to any rights of the agent that arise by operation of the law, the parties agree that, subject to clause 23.6 the agent is subrogated to all rights of the vendor under these terms and conditions against the buyer.
- 23.4. Title to the livestock does not pass to the agent or a nominee of the agent unless the agent, by written notice to the vendor, notifies the vendor that it is to be transferred to the agent or a nominee of the agent.
- 23.5. The vendor acknowledges that the agent may take enforcement, repossession or other action to recover any livestock for which the buyer has not paid in full, or the Price of such livestock, owing by the buyer under these terms and conditions:
(a) when this clause does not apply, as agent of the vendor (including by reselling the livestock); and

- (b) when this clause applies, on the agent's own behalf exercising the rights of the vendor by subrogation or assignment under these terms and conditions (whether in the vendor's name or not) and, where title to the livestock has not passed to the agent, by selling the livestock as agent of the vendor without the agent having to account to the vendor for the proceeds of sale.
- 23.6. The agent may at any time, assign, transfer, securitise or otherwise dispose of all or any of its rights under these terms and conditions and any debts created pursuant to it (including, without limitation, the rights assigned to it under clause 23.3).
- 23.7. The vendor hereby irrevocably appoints the agent as the vendor's attorney to:
(a) do at any time and in any manner as the agent thinks fit all acts necessary or desirable to perfect or improve the rights and interests afforded, or intended to be afforded, to the agent under these terms and conditions; and
(b) appoint one or more sub-attorneys to do anything that the agent may do as the vendor's attorney.
- 23.8. These terms and conditions do not render the agent liable to the buyer as vendor nor entitle the buyer to set off against the agent any right the buyer may have against the vendor or otherwise.
- 23.9. The buyer acknowledges that the provisions of this clause 23 are intended solely for the benefit of the agent (and its assigns) and the vendor. The liabilities and obligations of the buyer will not be in any way affected:
(a) by this clause 23, other than as it expressly provides; or (b) by the failure of the agent or the vendor or either of them to comply with the terms of this clause 23.
- 23.10. The buyer must pay all amounts payable to the vendor or the agent under these terms and conditions without any deduction, withholding, set off or counterclaim whatsoever, whether the benefit of a deduction, withholding, set off or counterclaim is alleged to exist in favour of the buyer as against the vendor or the agent in any capacity whatsoever or any other person including any assignor of the vendors or the buyers interests under these terms and conditions.
24. (a) The agent agrees that he is liable to pay to the vendor the Price, less such commission as is agreed between the vendor and the agent, and in the absence of any agreement such amount as is reasonable, and less the Fees that are payable by the vendor that were incurred by the agent on behalf of the vendor in relation to the sale of the livestock.
(b) In the event that the buyer pays the Price or part of it direct to the vendor then the agent has no liability to the vendor for the amount of such payment. Further, if the agent pays the vendor any amount which the buyer also pays direct to the vendor in respect of the same livestock, then the vendor must repay the agent that amount and the agent may debit that amount to an account held in the name of the vendor by the agent.
(c) Regardless of whether or not a sale has occurred the agent may, but is not under obligation so to do, instead of deducting payments owed to it by the vendor, debit the amount of the commission and fees to an account held in the name of the vendor by the agent.
25. The auctioneer has been retained by the vendor as auctioneer for the purpose of selling the livestock comprised in the lots. The terms of engagement between the auctioneer and the vendor do not extend to the provision of advice by the auctioneer to the vendor in relation to the safety or otherwise of the sale ring, the saleyards and the surrounding environments.

CHAPTER THREE - VENDOR WARRANTY FOR CORRECT PRESENTATION AND DECLARATION

26. This chapter applies only in the case of livestock and their companion animals sold at auction for slaughter when the buyer is the slaughterer and the livestock are transported direct from the sale yard to the meatworks at which they are slaughtered. This chapter does not apply if the buyer is a trader who subsequently resells the livestock to a slaughterer. A slaughterer is any person who pays the AMP Processor levy.
27. The warranty of a vendor is that livestock and their companion animals offered for sale at auction:
(a) pass AQIS and other regulatory authority requirements and inspections at the time of slaughter;
(b) are of merchantable quality;
(c) carry an NLIS device in accordance with State law;
(d) in the case where a representation has been made in the pre-sale catalogue that the livestock have particular characteristics or are fit for a particular purpose or market, and such representations are based on information in the National Vendor Declaration, the livestock will have those characteristics or will be fit for the particular purpose or market; and
(e) all information in any National Vendor Declaration provided by the vendor is true, complete and correct in all material respects.
28. In the event of a breach by the vendor of the vendor's warranty and provided such breach is notified by the buyer to the agent by 5:00pm on the 7th day after the fall of the hammer then the buyer is not liable to pay the portion of the Price of such of the vendor's livestock to which the breach applies.
29. However if the breach by the vendor is such that the livestock are not rejected outright but are instead downgraded then the buyer will pay the value of the livestock at their next highest and best use.
30. In the case of a breach by the vendor of the vendor's warranty then the vendor will also be liable to the buyer for any further losses which the buyer might establish but the buyer will take all reasonable steps in co-operation with the agent and vendor to mitigate both the effect of the breach and the amount of any loss.
31. Where a sentinel animal of a lot tests positive for chemical residue, and provided such test is certified and notified as required by these vendor warranty terms, then:
(a) the buyer will be entitled to delay payment for the price of all livestock in that lot; or
(b) the vendor has the option, at the vendor's cost, of collecting the companion animals and returning them to the vendor's property; or of having the livestock slaughtered in which event the risk of further condemnations will be that of the vendor. Where product integrity is potentially jeopardised, the Processor has the right to refuse slaughter and send the livestock back to the consigning property at the vendor's cost.
32. The auctioneer is liable to the buyer in respect of any breach of the vendor's warranty arising out of:
(a) any error, by the auctioneer, of transcription of information from the National Vendor Declaration completed by the vendor to the pre-sale catalogue or the buyers post-sale summary;
(b) any failure by the auctioneer to notify the buyer, prior to bidding, of any breach by the vendor of the warranty of the vendor if the buyer establishes that the agent knew of such breach prior to the sale; and
(c) any failure by the auctioneer to disclose prior to bidding, and in the pre-sale catalogue, that the vendor has failed to provide a National Vendor Declaration that is complete in all material aspects.

CHAPTER FOUR - OWNERS RISK FOR CONDITION OF CATTLE

33. This chapter applies only in the case of cattle and their companion animals sold at auction for slaughter when the buyer is the slaughterer and the cattle are transported direct from the sale yard to the meatworks at which they are slaughtered. This chapter does not apply if the buyer is a trader who subsequently resells cattle to a slaughterer. A slaughterer is any person who pays the AMP Processor levy.
34. Owners risk reflects the producer's responsibility to provide slaughter cattle for sale that are fit for human consumption. Cattle are fit for human consumption if they are not condemned as unfit by AQIS. Owners risk applies if the condemnation is due to a condition in the animal which the buyer establishes, by the AQIS certificate, existed prior to the fall of the hammer.
35. A buyer with the benefit of owners risk protection is not liable to pay the Price of that animal to the vendor. The buyer remains nevertheless liable for all costs incurred after the fall of the hammer in transport, slaughter, testing and disposal of the animal.
36. Owners risk protection is available to the buyer of cattle to which this chapter applies if all of the following are satisfied:
(a) a certificate is issued by AQIS which states the relevant NLIS RFID tag number and PIC, the date of the certificate, the reason for condemnation and that the reason for condemnation existed prior to the fall of the hammer;
(b) the certificate is received by the selling agent either in its original form or by fax by 5:00pm on the 7th day after the fall of the hammer; and
(c) if the condemnation is due to chemical residue the certificate follows testing in an AQIS approved laboratory which establishes maximum residue limits in excess of the Australian limit.
37. Owners risk does not apply, and the buyer must pay for the cattle, if the reason for condemnation is any of the following:
(a) bruising,
(b) fever,
(c) partial condemnation, or
(d) emaciation.

CHAPTER FIVE - NOTICES REQUIRED BY STATE LEGISLATION

NSW Legislation

Property, Stock and Business Agents Act 2002 Warnings Penalties for collusive practices. It is an offence against the Property, Stock and Business Agents Act 2002 for a person to do any of the following as a result of a collusive practice, or to induce or attempt to induce another person by a collusive practice to do any of the following:

- (i) to abstain from bidding; or
- (ii) to bid to a limited extent only; or
- (iii) to do any other act that might prevent free and open competition.

Severe penalties may be imposed on persons convicted of collusive practices. The auctioneer has the right to make one bid on behalf of the vendor if the auctioneer clearly and precisely announces that fact prior to the sale.

Tasmanian Legislation

The auctioneer must not appear to acknowledge a dummy bid. A buyer must not give, agree to give or offer a gift or other consideration to a person for abstaining from bidding and a person must not accept any gift or consideration for abstaining from bidding.
A person must not participate in collusive practices by way of making or receiving an unlawful promise to abstain from bidding, not to bid except to a limited extent or do any other thing which may prevent free and open competition.

Western Australian Legislation - Auction Sales Act 1973 s31 NOTICE

It is an offence to:

- (i) induce or attempt to induce another person to abstain from bidding by means of a promise, expressed or implied, that the other person will have the right to elect to take over as buyer or to toss or draw lots to establish who is to become the owner;
- (ii) abstain or agree to abstain from bidding as a result of such a promise;
- (iii) knowingly enter or permit or cause to be entered in the auctioneer's record any name other than that of the actual successful bidder;
- (iv) enter in the auctioneer's record the name of the buyer other than that of the actual successful bidder; or
- (v) in the case of successful bidder supply wrong information as to the name of the buyer to the auctioneer or to any person, firm or corporation on whose behalf the sale is conducted. The vendor, or any person on behalf of the vendor, or the auctioneer have the right to make no more than three bids.

© 1 FEBRUARY 2011

Australian Livestock & Property Agents Association Limited All rights reserved. Unauthorised reproduction in whole or in part is an infringement of copyright. These are recommended conditions of sale. They are provided to ALPA members as recommended terms and conditions only.

BUYERS INSTRUCTION SLIP



Name

Address

.....

--	--	--	--

Phone Mobile

Email

Lots Purchased

.....

.....

Consign to

Insurance for the following period.....

.....

Invoice to

Signature of buyer

DELIVERY LOCATION (MUD MAP)

SELLING AGENTS
Elders Ltd, Walcha

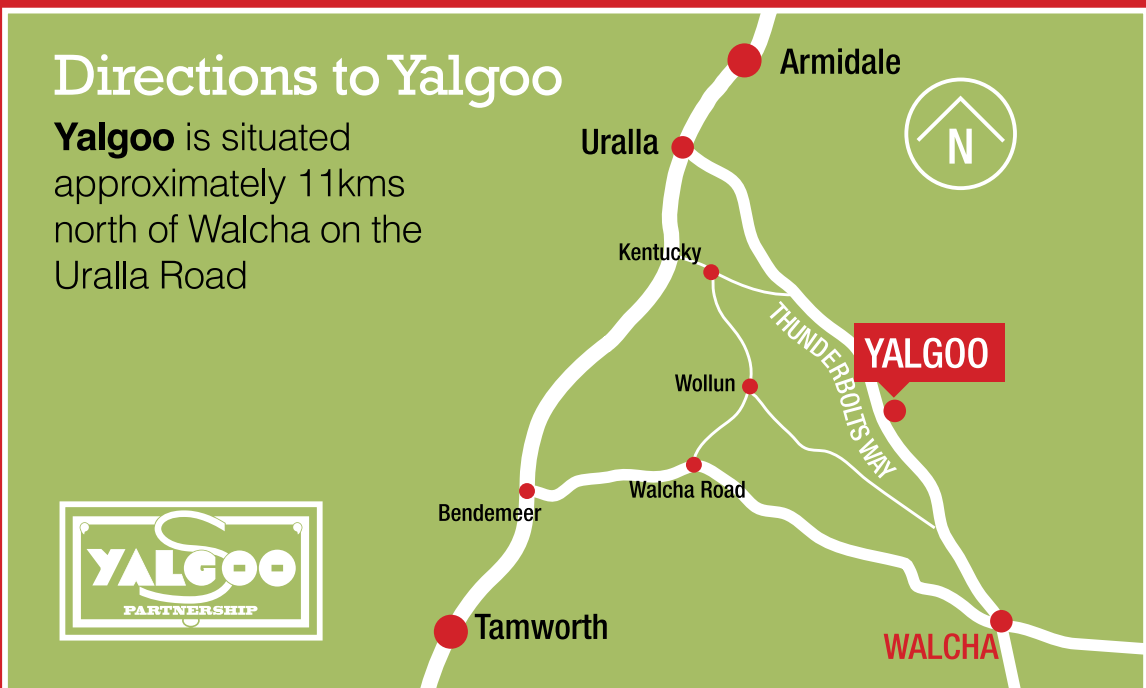
PROUDLY SUPPORTING YALGOO'S 60TH POLL HEREFORD BULL SALE IN CONJUNCTION WITH IVY BANK

At Elders we live your business like you do, we have been committed to agribusiness in Australia for over 180 years, supporting you is what we do best.

Allan Laurie	Livestock Sales	0455 821 394	Brian Kennedy	Stud Stock Specialist	0427 844 047
Angus Laurie	Livestock Sales	0418 587 643	Jon Spilsbury	Real Estate Sales	0409 866 033
Lachlan Holz	Agronomist	0437 476 712	Tanya McKnight	Agri Finance Manager	0429 900 096
Kayla Partridge	Farm Supplies	02 6774 2600	Glen Smallwood	Agri Business Manager	0417 807 544
Sue Hourigan	Sales Support	02 6774 2600	Melissa Sharpe	Insurance	0438 678 737
Tom Henry	Sheep & Wool Specialist	0409 659 877			

Elders Walcha
P. 02 6774 2600
E. walcha@elders.com.au

Elders



Yalgoo Partnership

Jock Nivison 0497 762 977 | Grant Nivison (02) 6777 2525
yalgoopartnership@bigpond.com | yalgoogenetics.com.au

Ivy Bank | Allan Green 0408 469 568